

Revisions/Submissions	Date
01.18.21	11.30.20
REVISED PER PLANNING BOARD COMMENTS	
DESIGN REVIEW SUBMITTAL	

VALVOLINE INSTANT OIL CHANGE
2836 S. SIGNAL BUTTE ROAD, MESA, AZ 85209

Professional Seal

Project No. 20191177
Scale AS NOTED
Drawn BV
Checked RP
Professional In charge SCOTT LOIKITS
Drawing Title

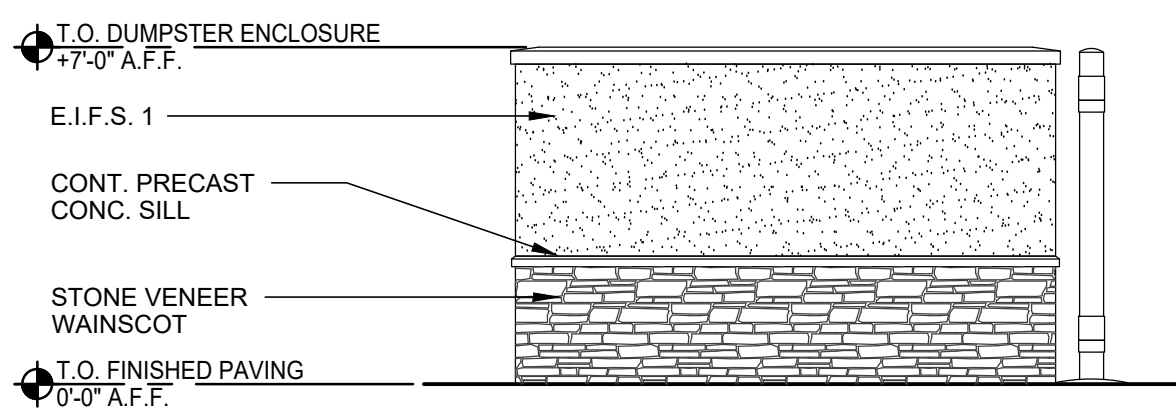
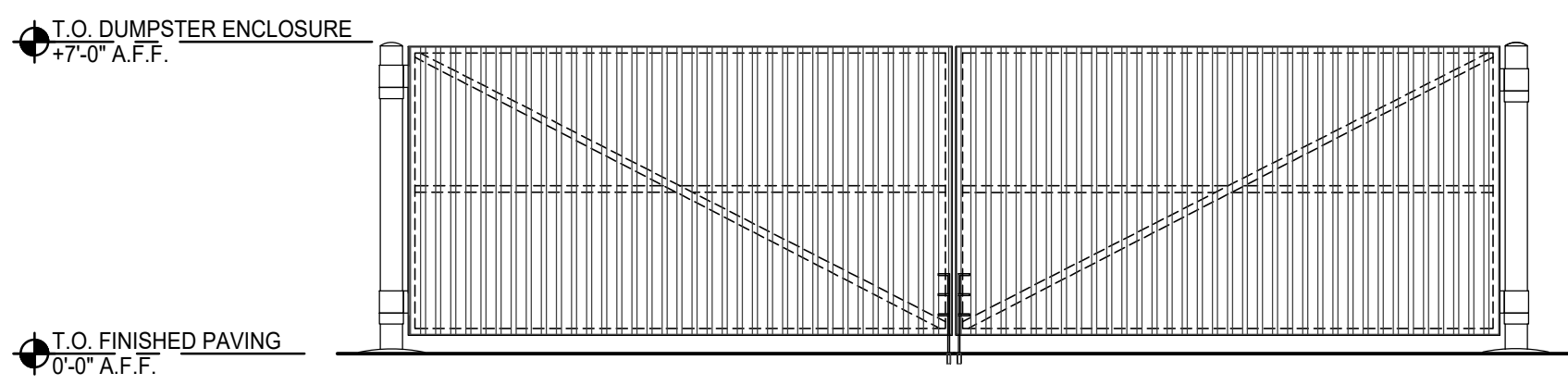
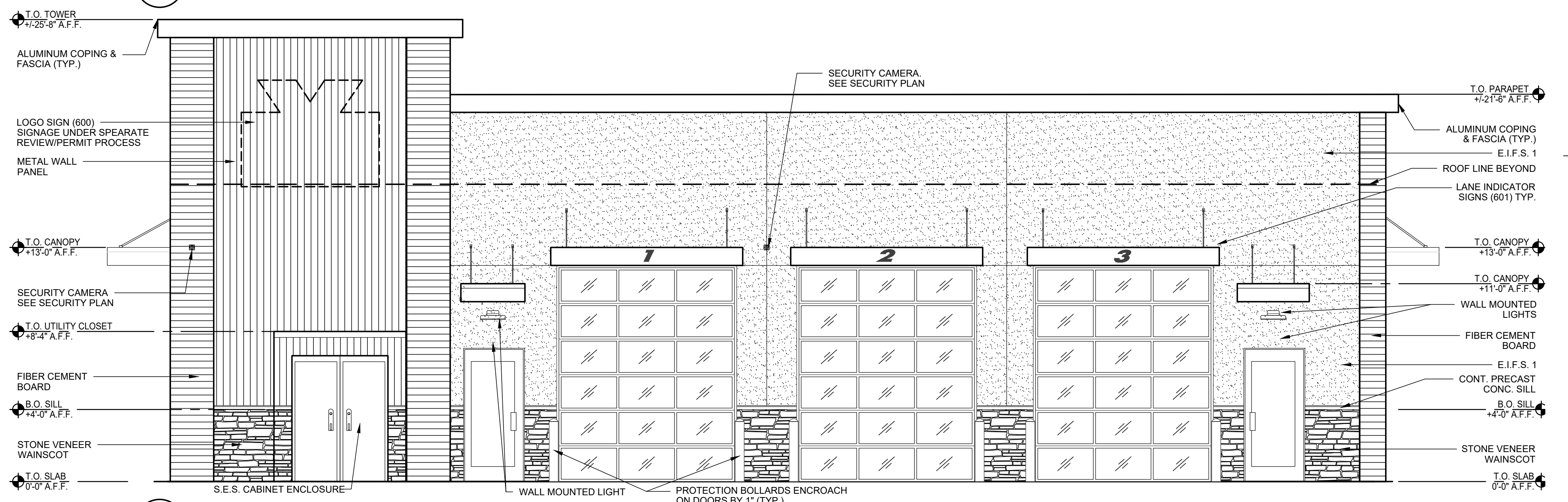
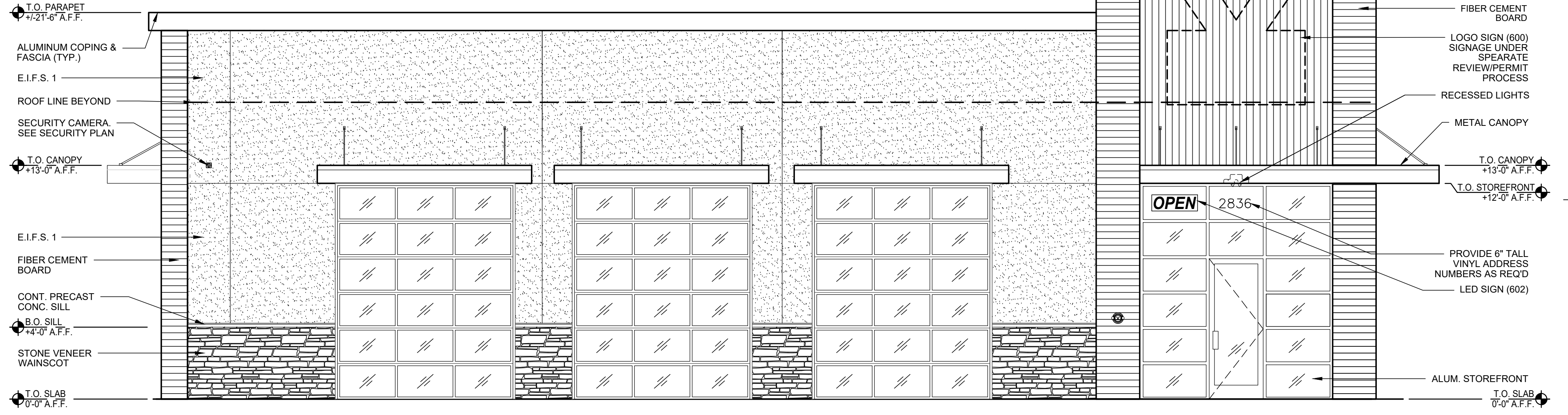
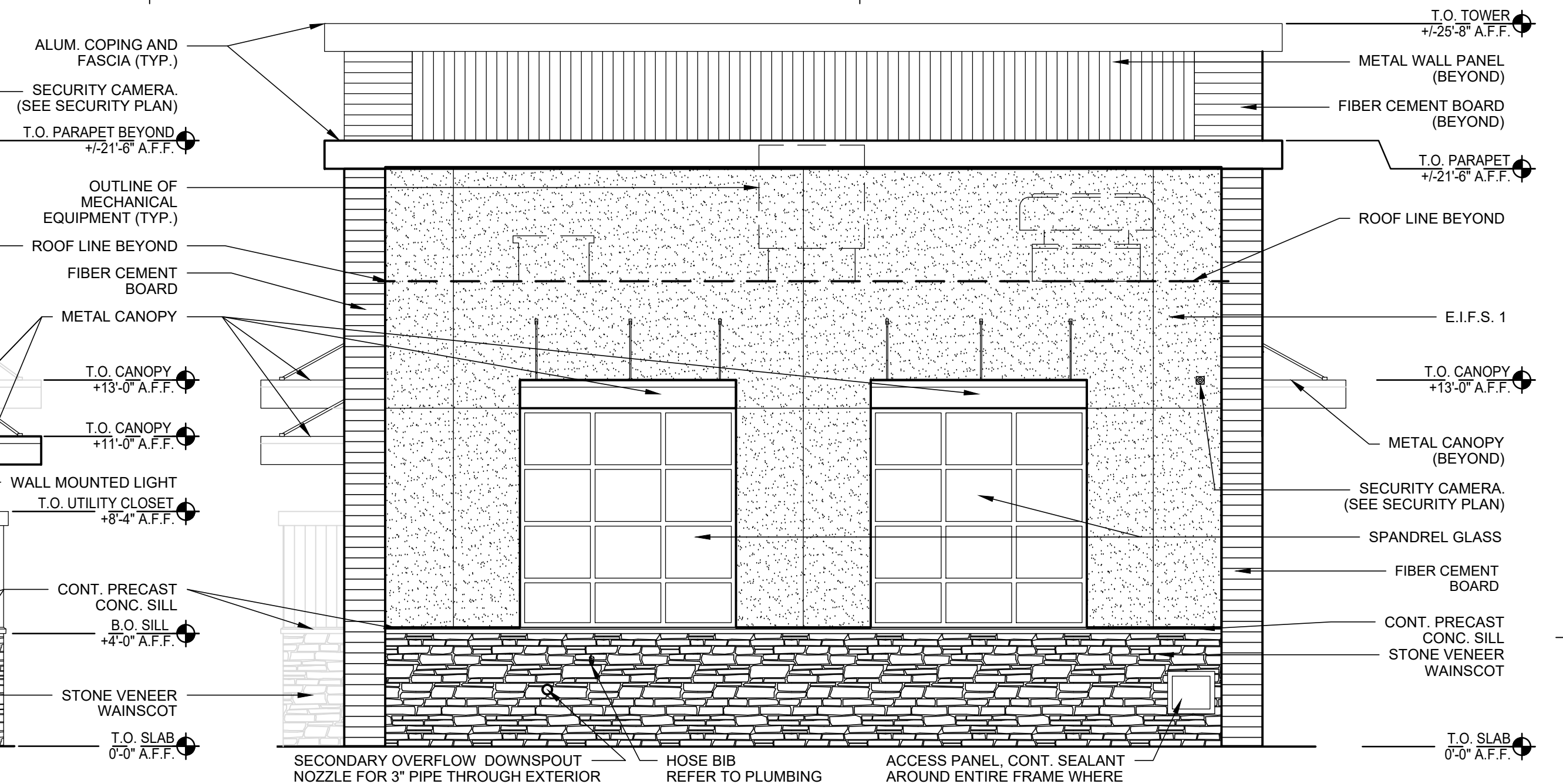
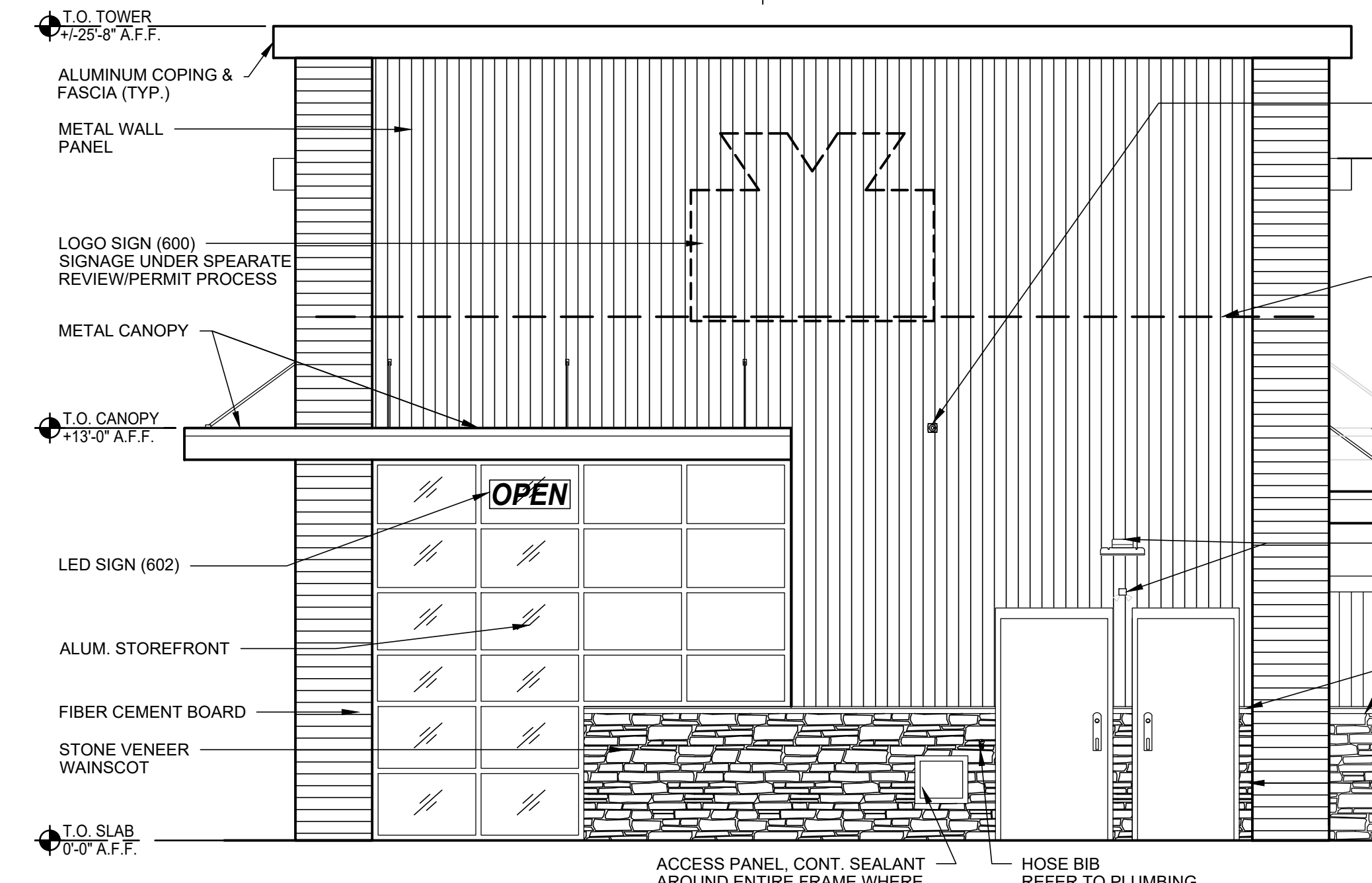
B&W
EXTERIOR
ELEVATIONS

Drawing No. **A-3a**

EXTERIOR FINISHES

EXTERIOR INSULATED FINISH SYSTEM:	DRYWIT (SANDPEBBLE FINE) COLOR: E.I.F.S. 1 = #113 AMARILLO WHITE
METAL WALL PANEL:	ATAS - RIGID WALL, VERTICAL. COLOR: SLATE GREY
FIBER CEMENT BOARD:	PAINTED, COLOR TO MATCH "SW 7076 CYBERSPACE"
STONE VENEER WAINSCOT: (GRADE TO PRECAST SILL)	"ELDORADO" STONE - STACKED STONE "SILVER LINING"
PRECAST SILL:	CUSTOM CAST STONE - "SLATE" (REFER TO SILL PROFILE)
MORTAR:	LEHIGH - "OLD COLONIAL"
MASONRY SEALER:	ALL MASONRY SURFACES SHALL BE TREATED W/SEALER REFER TO SPECIFICATIONS.
METAL CANOPY:	AWNEX CANOPY SYSTEM - COLOR TO MATCH PAC-CLAD "MATTE BLACK"
COPING, SOFFIT AND TRIM:	PAC-CLAD SNAP EDGE EXTENDED FASCIA (12-1/2") PAC-CLAD COLOR "MATTE BLACK" VENTED SOFFIT AND TRIM COLOR TO MATCH PAC-CLAD "MATTE BLACK"
ROOF SCUPPERS & DOWNSPOUTS:	TO MATCH PAC-CLAD "MATTE BLACK"
STOREFRONT SYSTEM:	2x4 1/2" KAWNEER TRIFAB V51 SERIES CLEAR ANODIZED ALUMINUM STOREFRONT SYSTEM W/1" INSULATED GLAZING.
H.M. DOORS, FRAMES:	FIELD PAINT w/SHERWIN-WILLIAMS B66-310 PRO-CYRL PRIMER FOLLOWED BY (2) FINISH COATS OF B66-300 SHER-CYRL HPA. COLOR SHALL BE SW-7515 "HOMESTEAD BROWN". PROVIDE MOCK-UP AND VERIFY COLOR W/OWNER.
O.H. DOOR FINISH:	CLEAR ANODIZED ALUMINUM
PARKING LOT STRIPING:	SHERWIN-WILLIAMS #TM226 SETFAST TM PAINT. COLOR SHALL BE "WHITE".
HANDICAP STALL STRIPING:	SHERWIN-WILLIAMS #TM2133 SETFAST TM PAINT. COLOR SHALL BE "ADA BLUE".
BOLLARDS/GUARD POSTS:	FIELD PAINT w/SHERWIN-WILLIAMS B66-310 PRO-CYRL PRIMER FOLLOWED BY (2) FINISH COATS OF B66-300 SHER-CYRL HPA. COLOR SHALL BE "VALVOLINE RED".
DUMPSTER ENCLOSURE GATE POSTS:	FIELD PAINT w/SHERWIN-WILLIAMS B66-310 PRO-CYRL AND PRIMER FOLLOWED BY (2) FINISH COATS OF SHERWIN WILLIAMS 7515 "HOMESTEAD BROWN". SEMI-GLOSS DTM ACRYLIC B66-200.

MATERIALS	EAST ELEVATION		WEST ELEVATION		SOUTH ELEVATION		NORTH ELEVATION	
	SQ.FT	PERCENTAGE	SQ.FT	PERCENTAGE	SQ.FT	PERCENTAGE	SQ.FT	PERCENTAGE
STONE	83.66	5.51%	78.06	5.12%	132.17	18.81%	36.27	4.21%
METAL WALL PANEL	125.06	8.23%	204.25	13.42%	7.82	1.11%	437.21	49.40%
FIBER CEMENT BOARD	149.08	9.81%	149.08	9.79%	59.80	8.51%	118.78	13.81%
EIFS	596.71	39.30%	575.06	37.79%	349.10	49.43%	0	0.00%



C:\Office Projects\BOG\102101177_Mesa\300_colored_elevations\Current\Exterior_elevations\38R\LAZ-EXT\TWR-A3 Exterior Elevations_Colored Elevations_11.19.2021 9:02:04 AM_BGVASQUEZ

AutoCAD SHX Text
2836

AutoCAD SHX Text
This drawing is the property of the
above