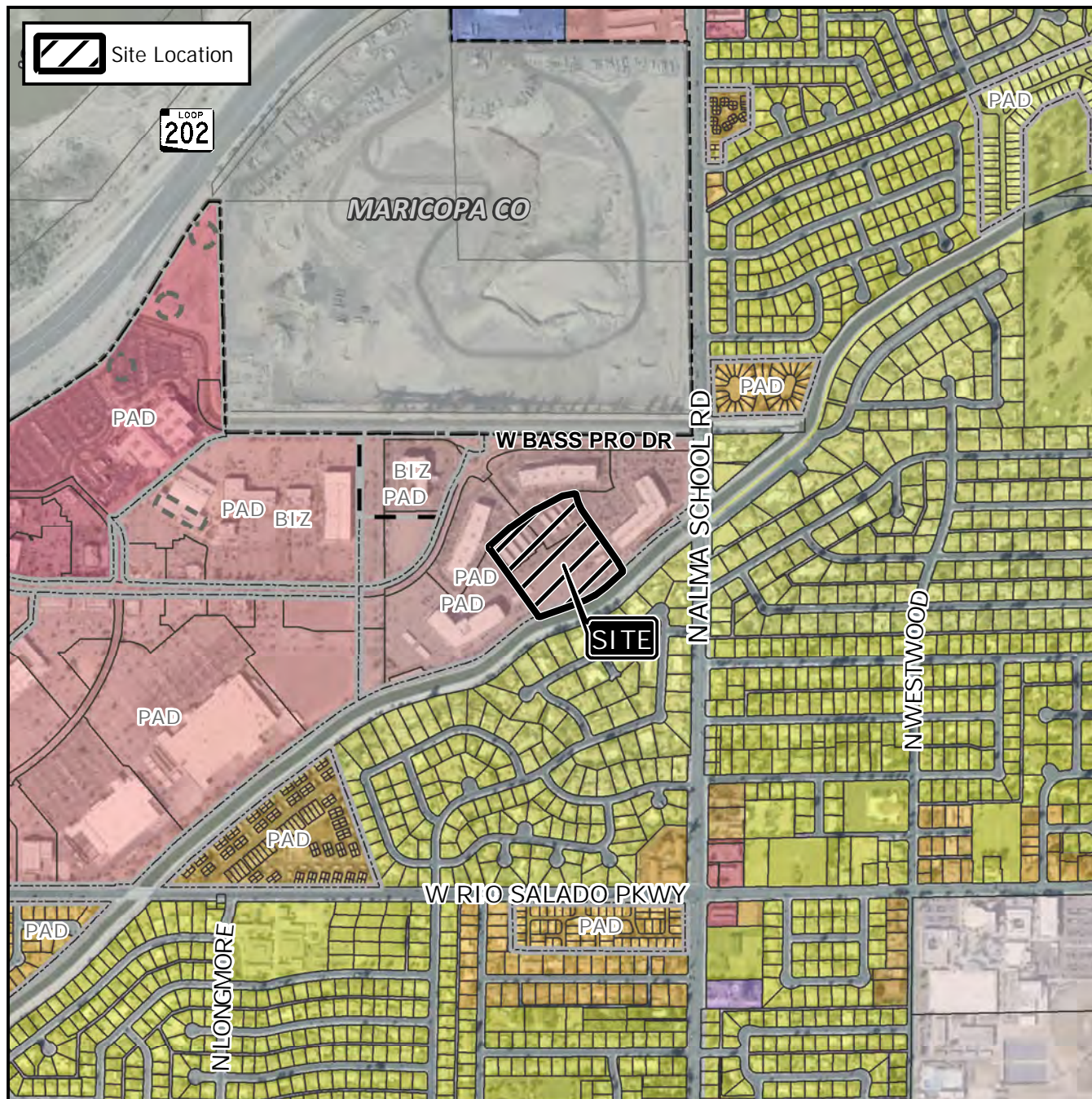


Design Review Vicinity Map: DRB20-00511



Case Details

Case:

DRB20-00511

Site / Address:

District 1. Within the 1200 to 1400 blocks of West Bass Pro Drive (south side) and the 1100 block of North Alma School Road (west side). Located south of the 202 Red Mountain Freeway on the west side of Alma School Road. (30.9± acres)

Request:

Requesting the review of a new office building and parking garage within an existing office development.

