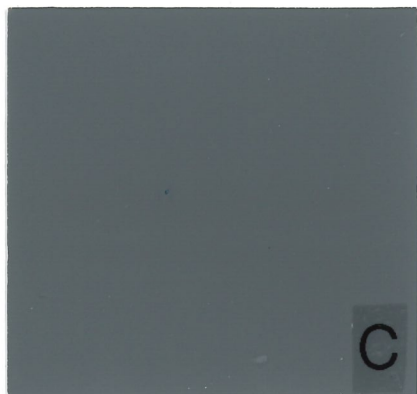


A



B



C



D



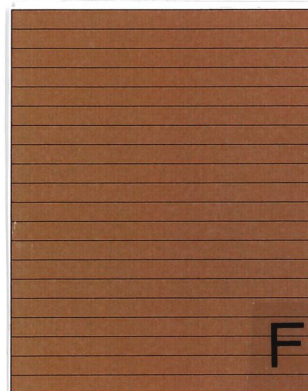
E



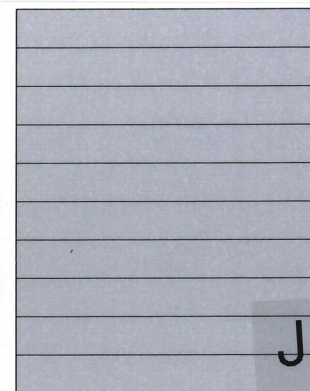
G

EXTERIOR MATERIAL LEGEND

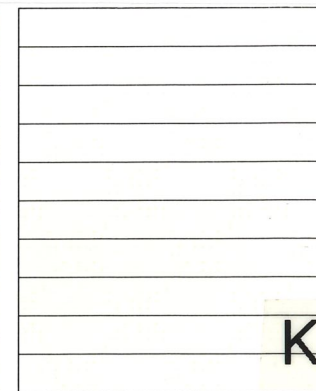
A	DUNN EDWARDS PAINT DET648 WHITE PICKET FENCE	F	CONCRETE FORMLINER: FLUTED RIB 1/2" DEEP, 6" OC - PATTERN #4022 DUNN EDWARDS PAINT - DET686 AGED WHISKY
B	DUNN EDWARDS PAINT DET610 WOLVERINE	G	STOREFRONT SYSTEM: 1" INSULATED GLAZING, PPG AZURIA/SOLARBAN 70, IN CLEAR ANNOIDIZED ALUMINUM FRAME
C	DUNN EDWARDS PAINT DET616 EQUINOX	J	CONCRETE FORMLINER: FLUTED RIB 1/2" DEEP, 12" OC - FITZGERALD 14386 DUNN EDWARDS PAINT - DET610 WOLVERINE
D	DUNN EDWARDS PAINT DEA187 BLACK	K	CONCRETE FORMLINER: FLUTED RIB 1/2" DEEP, 12" OC FITZGERALD 14386 DUNN EDWARDS PAINT DET648 WHITE PICKET FENCE (METALLIC FINISH AT NON-LOADING DOCK WALLS)
E	DUNN EDWARDS PAINT DET686 AGED WHISKY		



F



J



K

