

4 EAST ELEVATION
SCALE 3/32" = 1'-0"

KEYNOTES

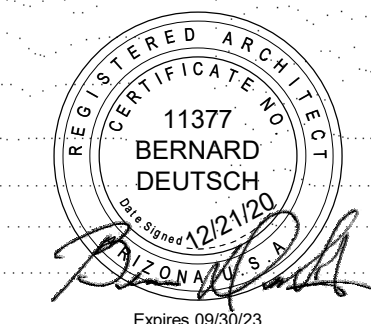
03-001	CONCRETE TILT PANEL, WALL WITH HORIZONTAL AND/OR VERTICAL REVEALS
03-003	KNOCK-OUT PANEL, FUR FUTURE OVERHEAD DOOR
04-002	MASSORY RAINING BED PLANTER
05-001	STEEL CANOPY, PAINTED
05-014	PROPOSED BUILDING ADDRESS LOCATION
05-017	PLATE STEEL CORNICE, PAINTED
06-023	STEEL TRELLIS WITH CLIMBING VINES
08-001	HOLLOW METAL DOOR AND FRAME
08-004	ALUMINUM STOREFRONT SYSTEM
09-007	ALUMINUM FRAMED WINDOW
12-001	CORTEN STEEL PLANTER-REFER TO ARCHITECTURAL, SITE PLAN
12-002	ROOF AND OVERFLOW DRAINS DAYLIGHT LOCATION
15-003	FUTURE ROOF TOP MECHANICAL UNIT SCREENED BY PARAPET
15-002	WALL-MOUNTED LIGHT FIXTURE
15-006	WALL-MOUNTED LIGHT FIXTURE-SEE ELECTRICAL

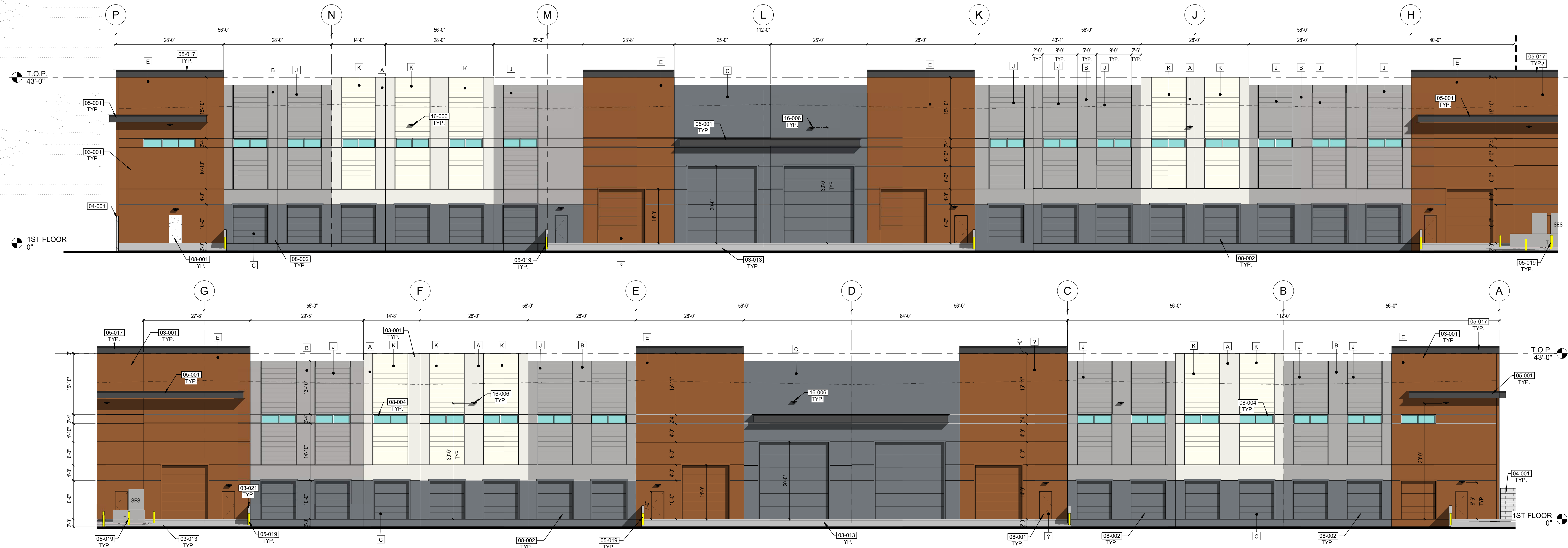
GENERAL NOTES

1. ALL ROOF AND OVERFLOW DRAINS SHALL BE INTERNAL TO THE BUILDING.
2. ALL FUTURE ROOF-TOP MECHANICAL EQUIPMENT SHALL BE FULLY SCREENED BY THE PARAPET.

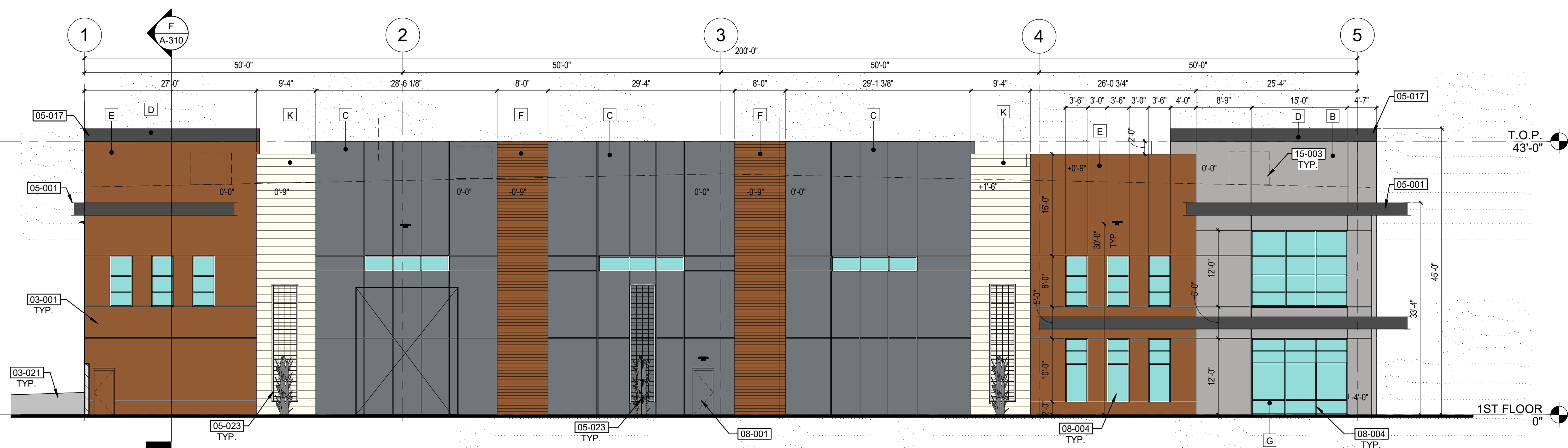
EAST ELEVATION		
MATERIAL	AREA (SF)	%
CONCRETE TILT WALL		
COLOR A	0	0.00
COLOR B	742	0.08
COLOR C	3650	0.40
COLOR E	1894	0.21
CONCRETE TILT WALL W/FORMLINER		
COLOR F	328	0.04
COLOR J	437	0.05
COLOR K	765	0.08
TRELLIS	228	0.02
WINDOWS	732	0.08
CORNICE	120	0.01
CANOPY	225	0.02
OH DOOR	0	0.00
HM DOOR	48	0.01
	9169	1.00

0' 8' 16' 32' 40'





1 NORTH ELEVATION-OVERALL - WEST
SCALE 3/32" = 1'-0"



3 WEST ELEVATION
SCALE 3/32" = 1'-0"

NORTH ELEVATION			WEST ELEVATION		
MATERIAL	AREA (SF)	%	MATERIAL	AREA (SF)	%
CONCRETE TILT WALL			CONCRETE TILT WALL		
COLOR A	2030	0.08	COLOR A	0	0.00
COLOR B	3627	0.14	COLOR B	742	0.08
COLOR C	3963	0.15	COLOR C	3674	0.40
COLOR E	3880	0.15	COLOR E	1894	0.21
CONCRETE TILT WALL W/FORMLINER			CONCRETE TILT WALL W/FORMLINER		
COLOR F	0	0.00	COLOR F	328	0.04
COLOR J	3842	0.14	COLOR J	437	0.05
COLOR K	2443	0.09	COLOR K	765	0.08
TRELLIS	0	0.00	TRELLIS	228	0.02
WINDOWS	560	0.02	WINDOWS	732	0.08
CORNICE	462	0.02	CORNICE	120	0.01
CANOPY	414	0.02	CANOPY	225	0.02
OH DOOR	5160	0.19	OH DOOR	0	0.00
HM DOOR	218	0.01	HM DOOR	24	0.00
	26599	1.00		9169	1.00

4 MASONRY SITE WALL ELEVATION (PARKING SCREEN WALL, SIMILAR)
SCALE 1/4" = 1'-0"

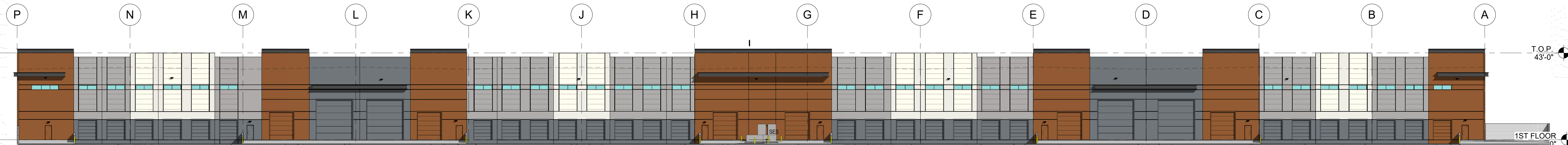
EXTERIOR MATERIAL LEGEND	
A DUNN EDWARDS PAINT DET648 WHITE PICKET FENCE	F CONCRETE FORMLINER: FLUTED RIB 1/2" DEEP, 6" OC PATTERN: 4022 DUNN EDWARDS PAINT DET686 AGED WHISKY
B DUNN EDWARDS PAINT DET610 WOLVERINE	G STOREFRONT SYSTEM: 1" INSULATED GLAZING, FRG AZURIA/SOLARBAN 70, IN CLEAR ANNOZED ALUMINUM FRAME
C DUNN EDWARDS PAINT DET616 EQUINOX	J CONCRETE FORMLINER: FLUTED RIB 1/2" DEEP, 12" OC FITZGERALD 14386 DUNN EDWARDS PAINT DET610 WOLVERINE
D DUNN EDWARDS PAINT DEA187 BLACK	K CONCRETE FORMLINER: FLUTED RIB 1/2" DEEP, 12" OC FITZGERALD 14386 DUNN EDWARDS PAINT DET648 WHITE PICKET FENCE (METALLIC FINISH AT NON- LOADING DOCK WALLS)
E DUNN EDWARDS PAINT DET686 AGED WHISKY	

KEYNOTES	
03-001	CONCRETE TILT PANEL WALL WITH HORIZONTAL AND/OR VERTICAL REVEALS
03-013	CONCRETE RAMP UP
03-021	CONCRETE GUARD RAIL, 42" AFF
04-001	MASONRY SITE WALL, 8'-0" AFF
05-001	STEEL CANOPY, PAINTED
05-017	PLATE STEEL CORNICE, PAINTED
05-019	6" PIPE BOLLARD
05-023	STEEL TRELLIS WITH CLIMBING VINES
08-001	HOLLOW METAL DOOR AND FRAME
08-002	OVERHEAD SECTIONAL DOOR
08-004	ALUMINUM STOREFRONT SYSTEM
15-003	FUTURE ROOF TOP MECHANICAL UNIT SCREENED BY PARAPET
16-006	WALL-MOUNTED LIGHT FIXTURE-SEE ELECTRICAL
GENERAL NOTES	
1.	ALL ROOF AND OVERFLOW DRAINS SHALL BE INTERNAL TO THE BUILDING.
2.	ALL FUTURE ROOF-TOP MECHANICAL EQUIPMENT SHALL BE FULLY SCREENED BY THE PARAPET.

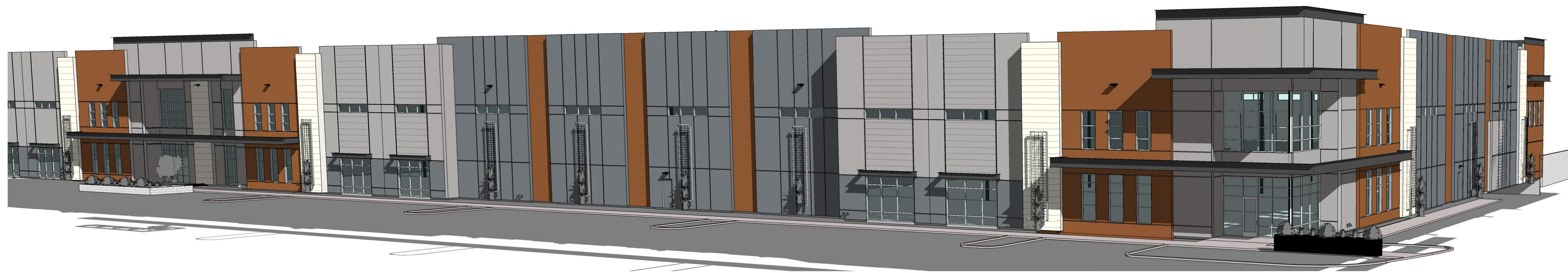
CONCEPTUAL AND SCHEMATIC DESIGNS, INCLUDING RENDERINGS, ARE CREATED FOR THE SOLE PURPOSE OF DEVELOPING A DESIGN CONCEPT. THEY ARE PART OF THE OVERALL DESIGN PROCESS THAT ULTIMATELY LEADS TO MORE DETAILED DRAWINGS, BUT THE INFORMATION DEPICTED IN THESE DESIGNS IS INCOMPLETE AND NOT INTENDED TO REPRESENT THE FULL SCOPE OF THE PROJECT DESIGN. THE USE OF THESE CONCEPTUAL AND SCHEMATIC DESIGNS/RENDERINGS FOR ANY PURPOSE OTHER THAN AS INTENDED BY THE ARCHITECT IS PROHIBITED.



1 SOUTH ELEVATION-FULL
SCALE 0' 16' 32' 64' 80' 3/64" = 1'-0"

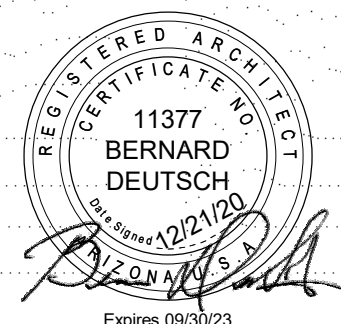


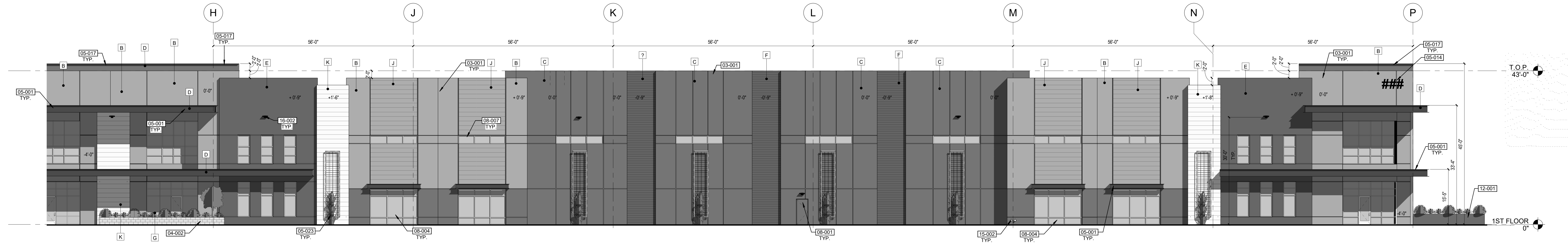
2 NORTH ELEVATION-FULL
SCALE 0' 16' 32' 64' 80' 3/64" = 1'-0"



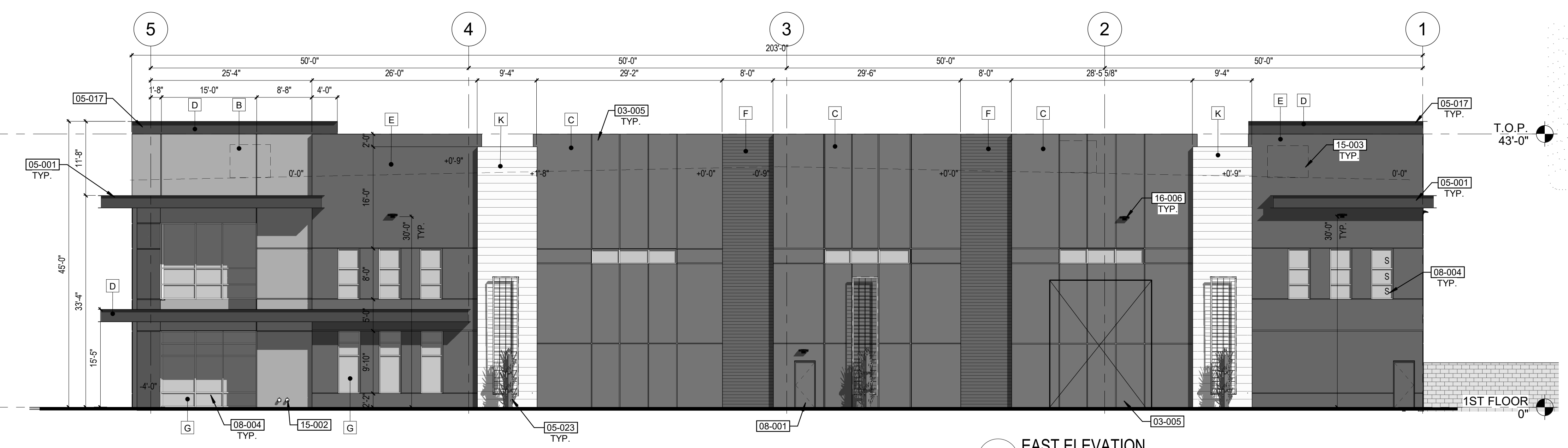
4 SOUTHEAST PERSPECTIVE
SCALE

CONCEPTUAL AND SCHEMATIC DESIGNS, INCLUDING RENDERINGS, ARE CREATED FOR THE SOLE PURPOSE OF DEVELOPING A DESIGN CONCEPT. THEY ARE PART OF THE OVERALL DESIGN PROCESS THAT ULTIMATELY LEADS TO MORE DETAILED DRAWINGS, BUT THE INFORMATION DEPICTED IN THESE DESIGNS IS INCOMPLETE AND NOT INTENDED TO REPRESENT THE FULL SCOPE OF THE PROJECT DESIGN. THE USE OF THESE CONCEPTUAL AND SCHEMATIC DESIGNS/RENDERINGS FOR ANY PURPOSE OTHER THAN AS INTENDED BY THE ARCHITECT IS PROHIBITED.





1 SOUTH ELEVATION
SCALE 3/32" = 1'-0"



4 EAST ELEVATION
SCALE 3/32" = 1'-0"

EXTERIOR MATERIAL LEGEND	
A	DUNN EDWARDS PAINT DET648 WHITE PICKET FENCE
B	DUNN EDWARDS PAINT DET610 WOLVERINE
C	DUNN EDWARDS PAINT DET616 EQUINOX
D	DUNN EDWARDS PAINT DEA187 BLACK
E	DUNN EDWARDS PAINT DET686 AGED WHISKY
F	CONCRETE FORMLINER: FLUTED RIB 1/2" DEEP, 6" OC PATTERN# 4022 DUNN EDWARDS PAINT DET686 AGED WHISKY
G	STOREFRONT SYSTEM: 1" INSULATED GLAZING, PPG AZURIA SOLARBAN 70, IN CLEAR ANODIZED ALUMINUM FRAME
J	CONCRETE FORMLINER: FLUTED RIB 1/2" DEEP, 12" OC FITZGERALD 14386 DUNN EDWARDS PAINT DET610 WOLVERINE
K	CONCRETE FORMLINER: FLUTED RIB 1/2" DEEP, 12" OC FITZGERALD 14386 DUNN EDWARDS PAINT DET648 WHITE PICKET FENCE (METALLIC FINISH AT NON- LOADING DOCK WALLS)

KEYNOTES	
03-001	CONCRETE TILT PANEL WALL WITH HORIZONTAL AND/OR VERTICAL REVEALS
03-005	KNOCK-OUT PANEL FOR FUTURE OVERHEAD DOOR
04-002	MASONRY RAISED BED PLANTER
05-001	STEEL CANOPY, PAINTED
05-014	PROPOSED BUILDING ADDRESS LOCATION
05-017	PLATE STEEL CORNICE, PAINTED
05-023	STEEL TRELLIS WITH CLIMBING VINES
08-001	HOLLOW METAL DOOR AND FRAME
08-004	ALUMINUM STOREFRONT SYSTEM
08-007	ALUMINUM FRAMED WINDOW
12-001	CORTEN STEEL PLANTER-REFER TO ARCHITECTURAL SITE PLAN
15-002	ROOF AND OVERFLOW DRAINS DAYLIGHT LOCATION
15-003	FUTURE ROOF TOP MECHANICAL UNIT SCREENED BY PARAPET
16-002	WALL-MOUNTED LIGHT FIXTURE
16-006	WALL-MOUNTED LIGHT FIXTURE-SEE ELECTRICAL

GENERAL NOTES	
1.	ALL ROOF AND OVERFLOW DRAINS SHALL BE INTERNAL TO THE BUILDING.
2.	ALL FUTURE ROOF-TOP MECHANICAL EQUIPMENT SHALL BE FULLY SCREENED BY THE PARAPET.

SOUTH ELEVATION		
MATERIAL	AREA (SF)	%
CONCRETE TILT WALL		
COLOR A	0	0.00
COLOR B	6405	0.26
COLOR C	5236	0.21
COLOR E	1716	0.07
CONCRETE TILT WALL W/FORMLINER		
COLOR F	1032	0.04
COLOR J	2931	0.12
COLOR K	1718	0.07
TRELLIS	900	0.04
WINDOWS	3791	0.15
CANOPY	840	0.03
CORNICE	270	0.01
OH DOOR	0	0.00
HM DOOR	48	0.00
	24887	1.00

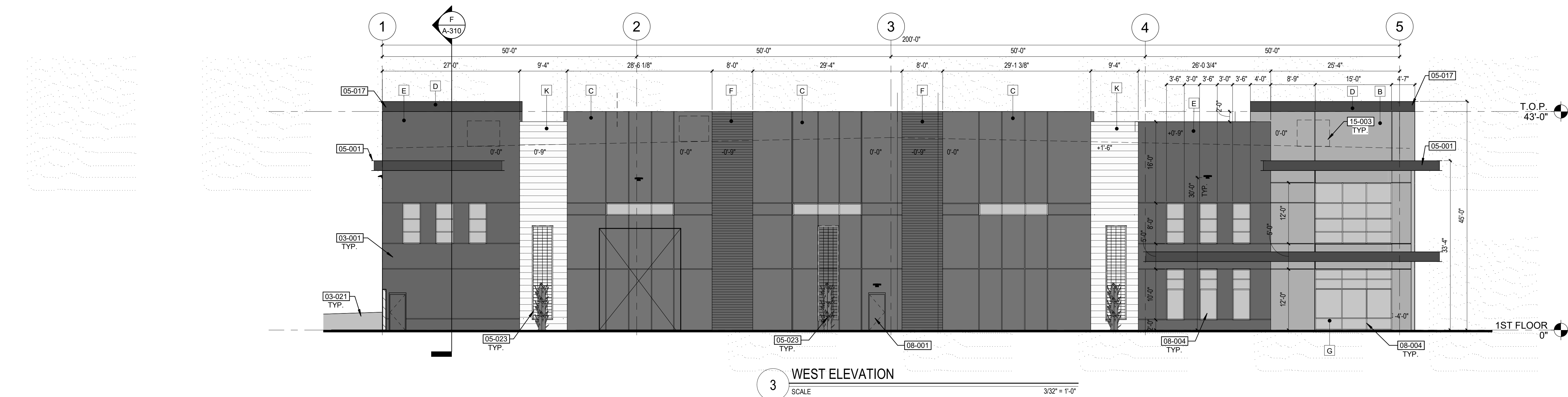
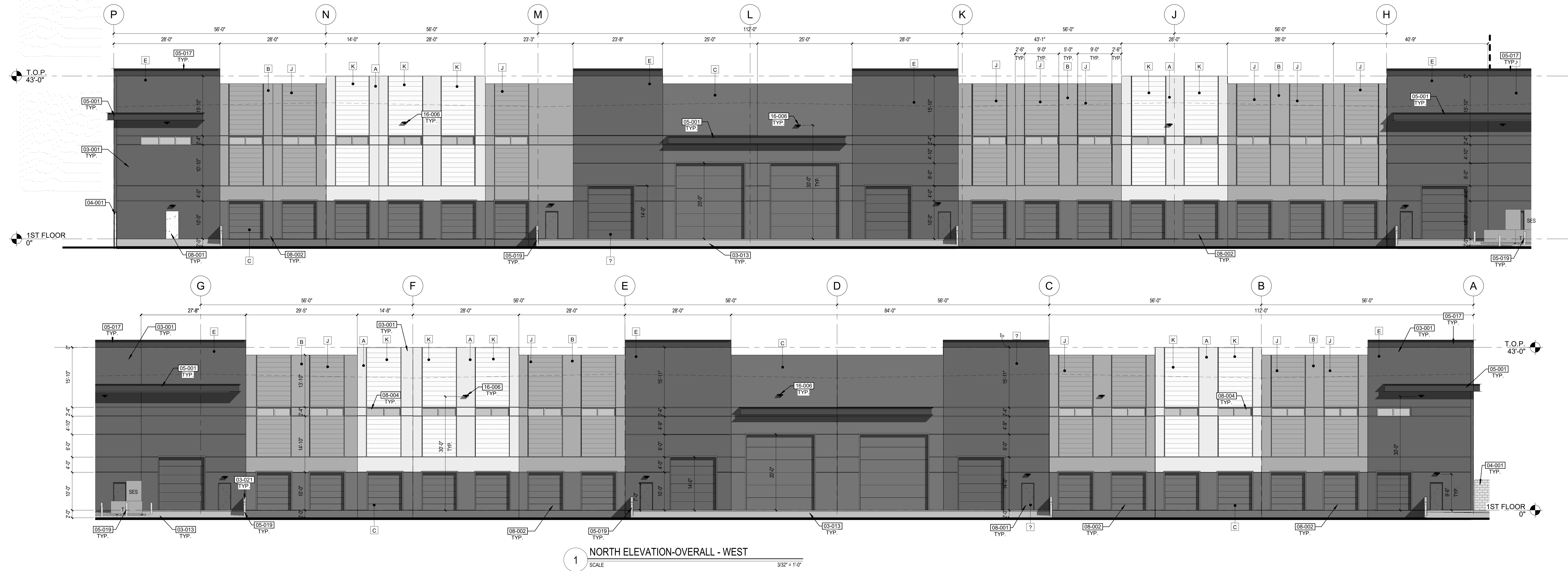
EAST ELEVATION		
MATERIAL	AREA (SF)	%
CONCRETE TILT WALL		
COLOR A	0	0.00
COLOR B	742	0.08
COLOR C	3650	0.40
COLOR E	1894	0.21
CONCRETE TILT WALL W/FORMLINER		
COLOR F	328	0.04
COLOR J	437	0.05
COLOR K	765	0.08
TRELLIS	228	0.02
WINDOWS	732	0.08
CORNICE	120	0.01
CANOPY	225	0.02
OH DOOR	0	0.00
HM DOOR	48	0.01
	9169	1.00



3 3D View 1
SCALE

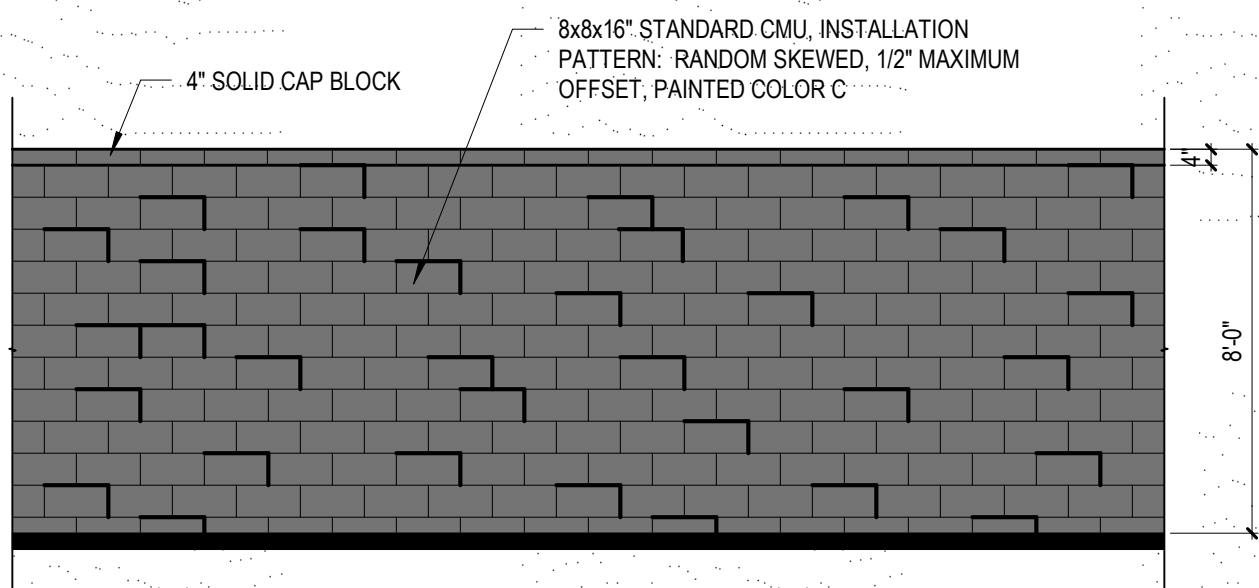
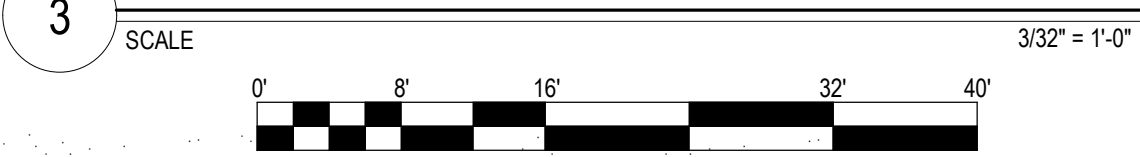


CONCEPTUAL AND SCHEMATIC DESIGNS, INCLUDING RENDERINGS, ARE CREATED FOR THE SOLE PURPOSE OF DEVELOPING A DESIGN CONCEPT. THEY ARE PART OF THE OVERALL DESIGN PROCESS THAT ULTIMATELY LEADS TO MORE DETAILED DRAWINGS. BUT THE INFORMATION DEPICTED IN THESE DESIGNS IS INCOMPLETE AND NOT INTENDED TO REPRESENT THE FULL SCOPE OF THE PROJECT DESIGN. THE USE OF THESE CONCEPTUAL AND SCHEMATIC DESIGNS/RENDERINGS FOR ANY PURPOSE OTHER THAN AS INTENDED BY THE ARCHITECT IS PROHIBITED.



NORTH ELEVATION		
MATERIAL	AREA (SF)	%
CONCRETE TILT WALL		
COLOR A	2030	0.08
COLOR B	3627	0.14
COLOR C	3963	0.15
COLOR E	3880	0.15
CONCRETE TILT WALL W/FORMLINER		
COLOR F	0	0.00
COLOR J	3842	0.14
COLOR K	2443	0.09
TRELLIS	0	0.00
WINDOWS	560	0.02
CORNICE	462	0.02
CANOPY	414	0.02
OH DOOR	5160	0.19
HM DOOR	218	0.01
	26599	1.00

WEST ELEVATION		
MATERIAL	AREA (SF)	%
CONCRETE TILT WALL		
COLOR A	0	0.00
COLOR B	742	0.08
COLOR C	3674	0.40
COLOR E	1894	0.21
CONCRETE TILT WALL W/FORMLINER		
COLOR F	328	0.04
COLOR J	437	0.05
COLOR K	765	0.08
TRELLIS	228	0.02
WINDOWS	732	0.08
CORNICE	120	0.01
CANOPY	225	0.02
OH DOOR	0	0.00
HM DOOR	24	0.00
	9169	1.00



4 MASONRY SITE WALL ELEVATION (PARKING SCREEN WALL, SIMILAR)
SCALE 1/4" = 1'-0"

EXTERIOR MATERIAL LEGEND	
A DUNN EDWARDS PAINT DET648 WHITE PICKET FENCE	F CONCRETE FORMLINER: FLUTED RIB 1/2" DEEP, 6" OC PATTERN# 4022 DUNN EDWARDS PAINT DET686 AGED WHISKY
B DUNN EDWARDS PAINT DET610 WOLVERINE	G STOREFRONT SYSTEM AZURIA/SOLARBAN 70, IN CLEAR ANNOZED ALUMINUM FRAME
C DUNN EDWARDS PAINT DET616 EQUINOX	J CONCRETE FORMLINER: FLUTED RIB 1/2" DEEP, 12" OC FITZGERALD 14366 DUNN EDWARDS PAINT DET610 WOLVERINE
D DUNN EDWARDS PAINT DEA187 BLACK	K CONCRETE FORMLINER: FLUTED RIB 1/2" DEEP, 12" OC FITZGERALD 14366 DUNN EDWARDS PAINT DET648 WHITE PICKET FENCE (METALLIC FINISH AT NON- LOADING DOCK WALLS)
E DUNN EDWARDS PAINT DET686 AGED WHISKY	

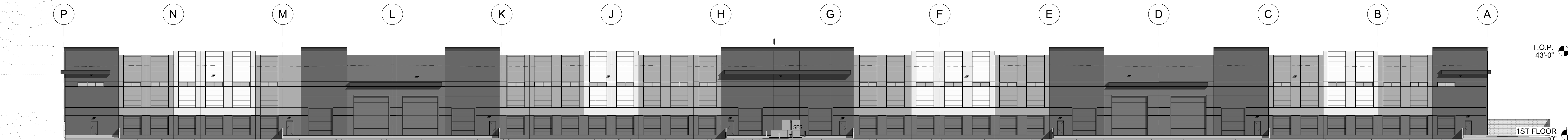
KEYNOTES	
03-001	CONCRETE TILT PANEL WALL WITH HORIZONTAL AND/OR VERTICAL REVEALS
03-013	CONCRETE RAMP UP
03-021	CONCRETE GUARD RAIL, 42" AFF
04-001	MASONRY SITE WALL, 8'-0" AFF
05-001	STEEL CANOPY, PAINTED
05-017	PLATE STEEL CORNICE, PAINTED
05-019	6" PIPE BOLLARD
05-023	STEEL TRELLIS WITH CLIMBING VINES
08-001	HOLLOW METAL DOOR AND FRAME
08-002	OVERHEAD SECTIONAL DOOR
08-004	ALUMINUM STOREFRONT SYSTEM
15-003	FUTURE ROOF TOP MECHANICAL UNIT SCREENED BY PARAPET
16-006	WALL-MOUNTED LIGHT FIXTURE-SEE ELECTRICAL

GENERAL NOTES	
1.	ALL ROOF AND OVERFLOW DRAINS SHALL BE INTERNAL TO THE BUILDING.
2.	ALL FUTURE ROOF-TOP MECHANICAL EQUIPMENT SHALL BE FULLY SCREENED BY THE PARAPET.

CONCEPTUAL AND SCHEMATIC DESIGNS, INCLUDING RENDERINGS, ARE CREATED FOR THE SOLE PURPOSE OF DEVELOPING A DESIGN CONCEPT. THEY ARE PART OF THE OVERALL DESIGN PROCESS THAT ULTIMATELY LEADS TO MORE DETAILED DRAWINGS, BUT THE INFORMATION DEPICTED IN THESE DESIGNS IS INCOMPLETE AND NOT INTENDED TO REPRESENT THE FULL SCOPE OF THE PROJECT DESIGN. THE USE OF THESE CONCEPTUAL AND SCHEMATIC DESIGNS/RENDERINGS FOR ANY PURPOSE OTHER THAN AS INTENDED BY THE ARCHITECT IS PROHIBITED.



1 SOUTH ELEVATION-FULL
SCALE 0' 16' 32' 64' 80' 3/64" = 1'-0"



2 NORTH ELEVATION-FULL
SCALE 0' 16' 32' 64' 80' 3/64" = 1'-0"



4 SOUTHEAST PERSPECTIVE
SCALE

CONCEPTUAL AND SCHEMATIC DESIGNS, INCLUDING RENDERINGS, ARE CREATED FOR THE SOLE PURPOSE OF DEVELOPING A DESIGN CONCEPT. THEY ARE PART OF THE OVERALL DESIGN PROCESS THAT ULTIMATELY LEADS TO MORE DETAILED DRAWINGS, BUT THE INFORMATION DEPICTED IN THESE DESIGNS IS INCOMPLETE AND NOT INTENDED TO REPRESENT THE FULL SCOPE OF THE PROJECT DESIGN. THE USE OF THESE CONCEPTUAL AND SCHEMATIC DESIGNS/RENDERINGS FOR ANY PURPOSE OTHER THAN AS INTENDED BY THE ARCHITECT IS PROHIBITED.

