

EEGEE'S - CRISMON & HAMPTON

MESA

project consultants

landscape architecture:

DESIGN ETHIC, LLC
7525 EAST 6TH AVENUE
SCOTTSDALE, ARIZONA 85251
CONTACT: BRANDON PAUL
PHONE: 480.225.7077
EMAIL: bpaul@designethic.net

engineering:

CYPRESS CIVIL DEVELOPMENT
4450 NORTH 12TH STREET, 228
PHOENIX, ARIZONA 85014
CONTACT: JEFF HUNT
PHONE: 623.282.2498
EMAIL: jphunt@cypresscivil.com

architecture:

FLATIRON GROUP
222 SOUTH MILL AVENUE
PHOENIX, AZ 85281
PROJECT CONTACT: IAN BROWN
PHONE: 480.258.1230
EMAIL: ibrown@flatirongroup.com

owner:

EEGEE'S, LLC
3360 EAST AJO WAY
TUCSON, AZ 85713
CONTACT: HOLLY KEILMAN
PHONE: 267.374.0125
EMAIL: hollykeilman@eegees.com

site data:

ZONING: LC - LIMITED COMMERCIAL (EXISTING)
NET SITE AREA: 44,966 SF / 1.03 AC

sheet index

SHEET	TITLE
L.01	COVER SHEET & NOTES

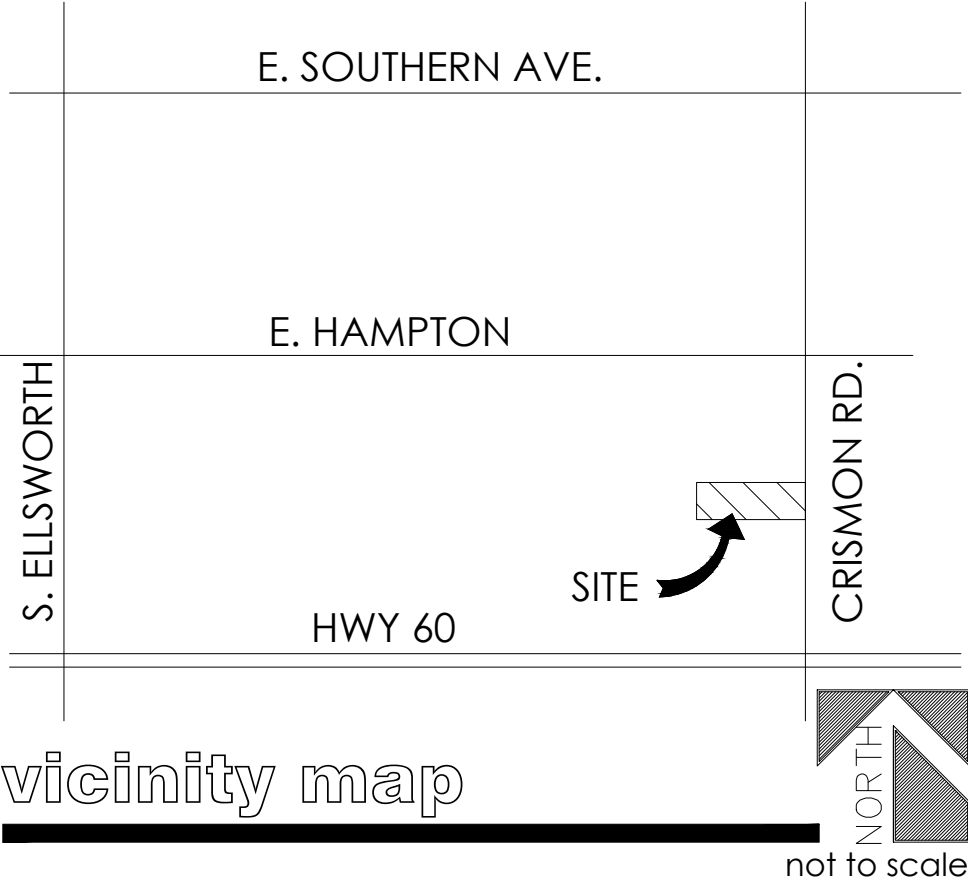
city of mesa notes

ALL LANDSCAPING WITHIN THE RIGHT-OF-WAY IS IN CONFORMANCE WITH THE LOW WATER USE PLANT LIST PROVIDED BY THE ARIZONA DEPT. OF WATER RESOURCES.

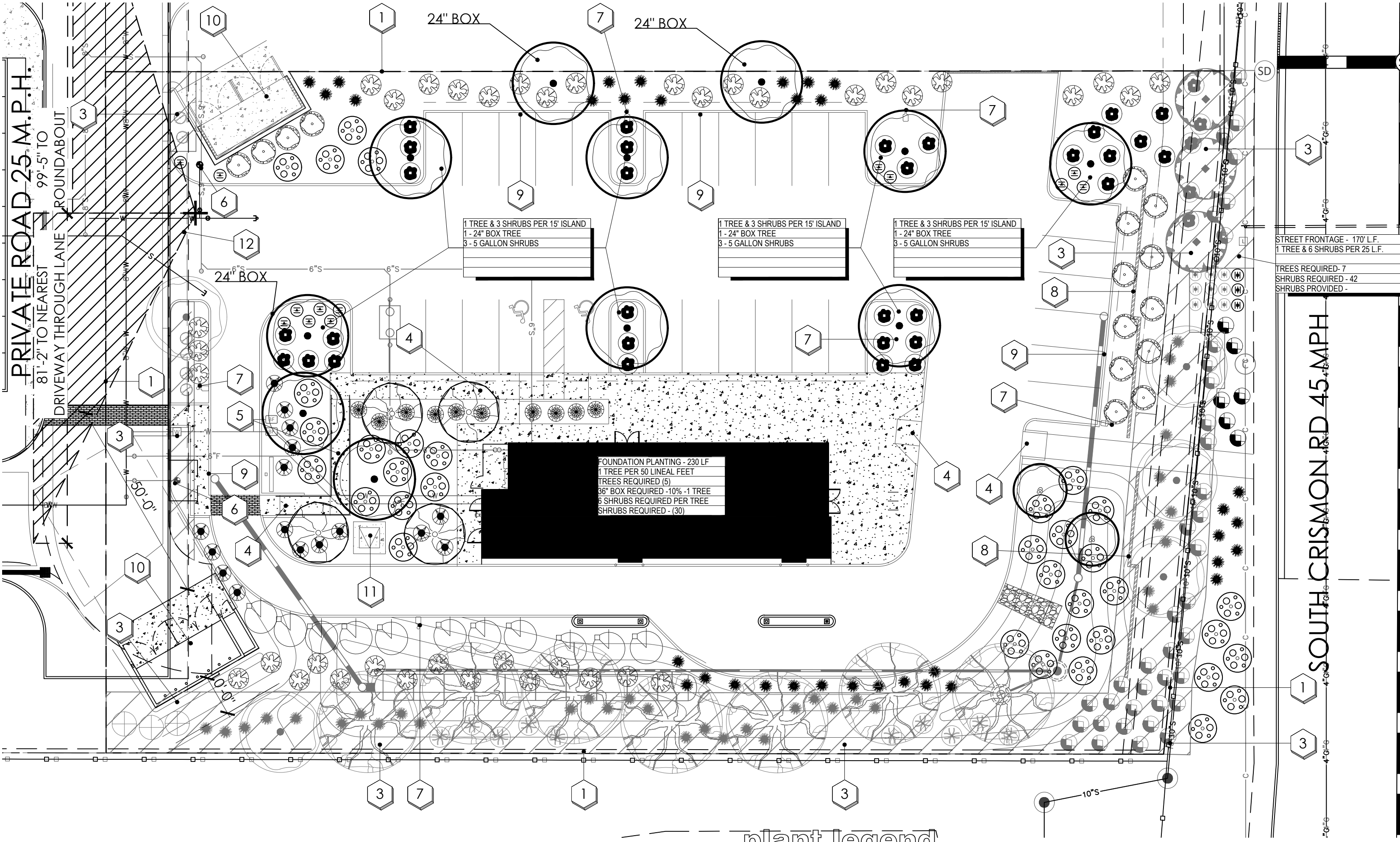
ALL LANDSCAPING INSTALLED WITH THIS PROJECT SHALL BE MAINTAINED BY OWNER/OR LESSEE IN ACCORDANCE WITH THE APPROVED LANDSCAPE PLAN. TREE HEIGHTS & CALIPERS WILL COMPLY WITH "ARIZONA NURSEY ASSOCIATION SPECIFICATIONS" FOR THAT TYPE & SIZE OF TREE.

ALL TREES AND SHRUBS LOCATED IN THE LINE-OF-SIGHT WILL BE MAINTAINED FOR A CLEAR AREA BETWEEN 3' TO 7' ALL BACKFLOW PREVENTERS 2" OR LARGER SHALL BE SCREENED WITH LANDSCAPE MATERIAL LOCATED WITHIN A 6' RADIUS OF OF THE BACKFLOW PREVENTER.

ALL BACKFLOW PREVENTERS LESS THAN 2" SHALL BE PLACED IN A WIRE MESH BASKET AND PAINTED GREEN.



vicinity map



hampton square phase I
offsite plant legend

botanical name	common name	size	qty
evergreen trees			
PARKINSONIA HYBRID 'AZT'	'AZT' THORNLESS PALO VERDE	per approved plans	5
PROSOPIS CHILENSIS	'THORNLESS' THORNLESS CHILEAN MESQUITE	per approved plans	7
shade tree			
ACACIA ANEURA	MULGA	per approved plans	3
large shrubs			
CAESALPINIA PULCHERRIMA	RED BIRD OF PARADISE	per approved plans	3
medium shrubs			
CASSIA NEMOPHILA	DESERT CASSIA	per approved plans	10
HESPERALOE PERPA	BREAK LIGHTS RED YUCCA	per approved plans	35
LEUCOPHYLLUM LANGMANIAE	'RIO BRAVO' RIO BRAVO TEXAS RANGER	per approved plans	5
LEUCOPHYLLUM ZYGOPHYLLUM	CIMARRON	per approved plans	7
evergreen groundcover			
EREMOPHILA GLABRA	'MIGNEW GOLD' OUTBACK SUNRISE EMU	per approved plans	38
LANTANA	'NEW GOLD' NEW GOLD LANTANA	per approved plans	12

general landscape notes

- CONTRACTOR TO VERIFY ALL QUANTITIES.
- CONTRACTOR TO PROVIDE DECOMPOSED GRANITE SAMPLES TO LANDSCAPE ARCHITECT FOR APPROVAL.
- MAINTAIN 3' TO 5' TREE AND SHRUB CLEARANCE FROM WALLS.
- MAINTAIN 1' TO 2' TREE AND SHRUB CLEARANCE FROM SIDEWALKS.
- TREES ADJACENT TO PEDESTRIAN WALKWAYS SHOULD HAVE A MINIMUM CANOPY CLEARANCE OF 6'-8".
- ALL MATURE TREES AND PALM CANOPIES MUST BE A MINIMUM OF 5' FROM ANY BUILDING WALLS OR BUILDING WINDOWS.

plant legend

botanical name	common name	emitters	size	qty
evergreen trees				
PARKINSONIA HYBRID 'AZT'	'AZT' THORNLESS PALO VERDE	(5 @ 1.0 GPH)	36" 24" BOX	8 3
shade trees				
ACACIA SALICINA	WILLOW ACACIA	(5 @ 1.0 GPH)	24" BOX	4
ornamental trees				
CAESALPINIA CACALACO	'SMOOTHIE' THORNLESS CASCALOTE	(5 @ 1.0 GPH)	24" BOX	2
large shrubs				
TECOMA STANS	YELLOW BELLS	(1 @ 1.0 GPH)	5 GAL.	11
medium shrubs				
AGAVE OVATIFOLIA	WHALES TONGUE AGAVE	(1 @ 1.0 GPH)	5 GAL.	10
BOUGAINVILLEA	'BARBARA KARST' BARBARA KARST BOUGAINVILLEA	(1 @ 1.0 GPH)	5 GAL.	15
CALLIANDRA CALIFORNICA	BAJA FAIRY DUSTER	(1 @ 1.0 GPH)	5 GAL.	16
DASYLIRION WHEELERI	DESERT SPOON	(1 @ 1.0 GPH)	5 GAL.	38
HESPERALOE PERPA	BREAK LIGHTS RED YUCCA	(1 @ 1.0 GPH)	5 GAL.	34
LEUCOPHYLLUM LANGMANIAE	'RIO BRAVO' RIO BRAVO TEXAS RANGER	(1 @ 1.0 GPH)	5 GAL.	31
evergreen groundcover				
ACACIA REDOLENS	DESERT CARPET	(1 @ 1.0 GPH)	5 GAL.	35
EREMOPHILA GLABRA	'MIGNEW GOLD' OUTBACK SUNRISE EMU	(1 @ 1.0 GPH)	5 GAL.	6
LANTANA MONTEVIDENSIS	PURPLE LANTANA	(1 @ 1.0 GPH)	5 GAL.	13
LANTANA	'NEW GOLD' NEW GOLD LANTANA	(1 @ 1.0 GPH)	5 GAL.	3
inerts				
1/2" SCREENED DECOMPOSED GRANITE	EXPRESS GOLD	1/2" SCREENED	20,348 S.F.	

landscape data

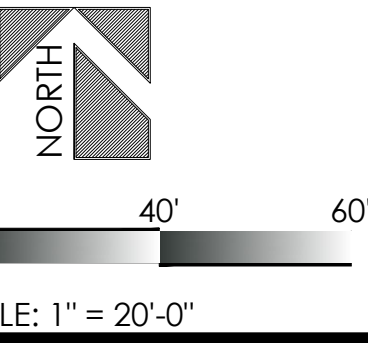
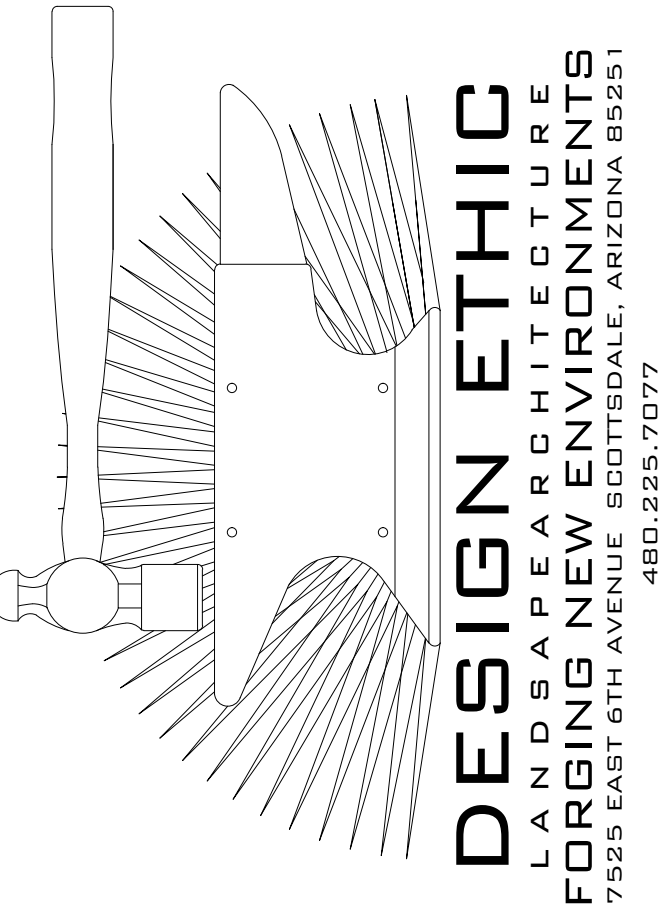
ZONING:	PEP - PLANNED EMPLOYMENT PARK
NET SITE AREA:	44,966 SF / 1.03 AC
TOTAL R.O.W.:	2,266 S.F.
TOTAL FRONTAGE:	170 L.F.
TOTAL ON-SITE LANDSCAPE:	18,082 S.F.
PERCENTAGE OF LANDSCAPE:	40.2%
OVERALL:	
TREES PROVIDED FOR ENTIRE SITE:	33 TREES
36" BOX TREES REQUIRED:	9 TREES
(25% OF TREES REQUIRED FOR ENTIRE SITE)	
36" BOX TREES PROVIDED:	9 TREES
STREET FRONTAGE 170 LINEAR FEET:	
TREES REQUIRED:	7
(1 PER 25' OF STREET FRONTAGE - 170/25= 7)	
TREES PROVIDED:	7
24" BOX TREES REQUIRED:	4
(50% OF TREES REQUIRED)	
24" BOX TREES PROVIDED:	4
36" BOX TREES REQUIRED:	2
(25% OF TREES REQUIRED)	
36" BOX TREES PROVIDED:	2
SHRUBS REQUIRED:	42
(6 PER 25' OF STREET FRONTAGE)	
SHRUBS PROVIDED:	64

planting key notes

- PROPERTY LINE / RIGHT OF WAY LINE
- DECOMPOSED GRANITE IN ALL PLANTING AREAS
- OFFSITE LANDSCAPE PER HAMPTON SQUARE PHASE I PLANS.
- ACCESSIBLE RAMP. SEE CIVIL ENG. PLANS.
- 6'-0" SIDEWALK.
- FIRE HYDRANT -3'-0" CLEAR OF ALL PLANT MATERIAL
- SITE LIGHTING. SEE ARCH. PLANS.
- SCREEN WALL. SEE ARCH. PLANS.
- CURB. SEE CIVIL ENG. PLANS.
- TRASH ENCLOSURE. SEE ARCHITECT'S SITE PLAN. TREE PLANTING SHOULD NOT TAKE PLACE WITHIN TEN (10) FEET OF THE BIN ENCLOSURE AND SHOULD BE SPACED SO AS NOT TO CREATE AN AERIAL OBSTRUCTION FOR THE BIN DUMPING AT THE FINAL FULL GROWTH DIMENSIONS.
- PROPOSED TRANSFORMER LOCATION. MAINTAIN 3' ACCESS & CLEARANCE AROUND ALL EDGES. ALLOW FOR 12' CLEAR OPERATIONAL AREA IMMEDIATELY IN FRONT OF TRANSFORMER.

city of mesa vegetation credit table

	CREDIT (S.F.)	QTY ON PLAN	TOTAL CREDIT (S.F.)
EVERGREEN TREE: (MIN. 25'-0" TALL AT MATURITY)	100	23	2,300
SHADE TREE:	50	6	300
ORNAMENTAL TREE:	25	2	50
LARGE SHRUB: (MIN. 8'-0" TALL AT MATURITY)	50	13	650
MEDIUM SHRUB: (4'-0" - 8'-0" TALL AT MATURITY)	25	201	5,025
EVERGREEN GROUNDCOVER:	25	107	2,675
TOTAL VEGETATION CREDIT (S.F.)			11,000
TOTAL OPEN SPACE (S.F.)			20,348
VEGETATION COVERAGE (%)			54.1



EEGEE'S
CRISMON & U.S. 60 HWY.
MESA, ARIZONA 85209

PROJECT:	
JOB NO:	20-091
DATE:	
DRAWN BY:	B. PAUL
SUBMITTED:	01.04.2021
REVISED:	
SHEET	