

PROJECT DATA:

ZONING: LI-AF- LIGHT INDUSTRIAL / AIRFIELD OVERLAY  
CURRENT CASE NOS: DRB20-00654; ZON20-00655  
PREVIOUS CASE NOS: DRB19-00521; ZON19-00538  
PROPOSED USES: ADM19-00650; PRS20-00348  
OFFICE / SHOWROOM  
MFG. / STORAGE  
OCCUPANCY: B -M - F1 - S1  
CONSTRUCTION TYPE: III-B  
NET SITE AREA: 428,042 S.F. (9.8265 AC.)  
GROSS SITE AREA: 510,663 S.F. (11.7232 AC.)

GROSS BLDG AREA: 142,738 S.F.  
GROSS FLOOR AREA: 140,067 S.F.  
(INCLUDES FIRE RISER ROOM)

LANDSCAPE AREA:  
OFF-SITE LANDSCAPE AREA: 23,331 S.F.  
ON-SITE LANDSCAPE AREA: 149,814 S.F.  
% ON-SITE LANDSCAPE AREA: 35%

LOT COVERAGE: 65%  
(Per MZO Chapter 87 Definition; everything except landscaping is considered an impervious surface on this project.)

AREA INCREASE:  
Section 507.2.1. UNLIMITED AREA WITH REDUCED OPEN SPACE.  
SEE SHEET A-101 FOR FIRE RATING DETAILS AND NOTES.

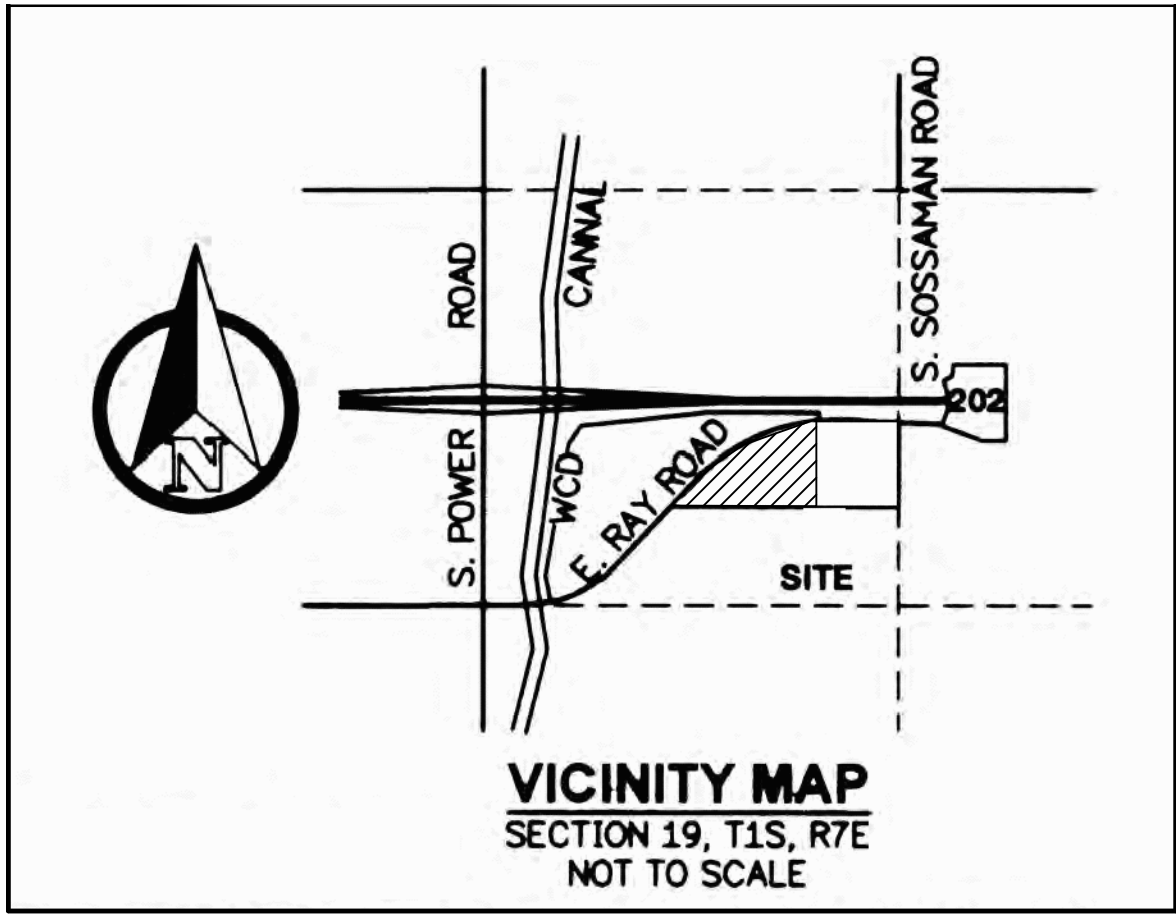
PARKING REQUIRED: 304 SPACES  
(SHELL INDUSTRIAL)  
25% @ 1:375 = 35017 / 375 = 94 SPACES  
75% @ 1:500 = 105050 / 500 = 210 SPACES

PARKING PROVIDED: 207 SPACES  
STANDARD SPACES: 199  
ACCESSIBLE SPACES: 8  
(NOTE: ALL ACCESSIBLE SPACES ARE UNIVERSAL TYPE)

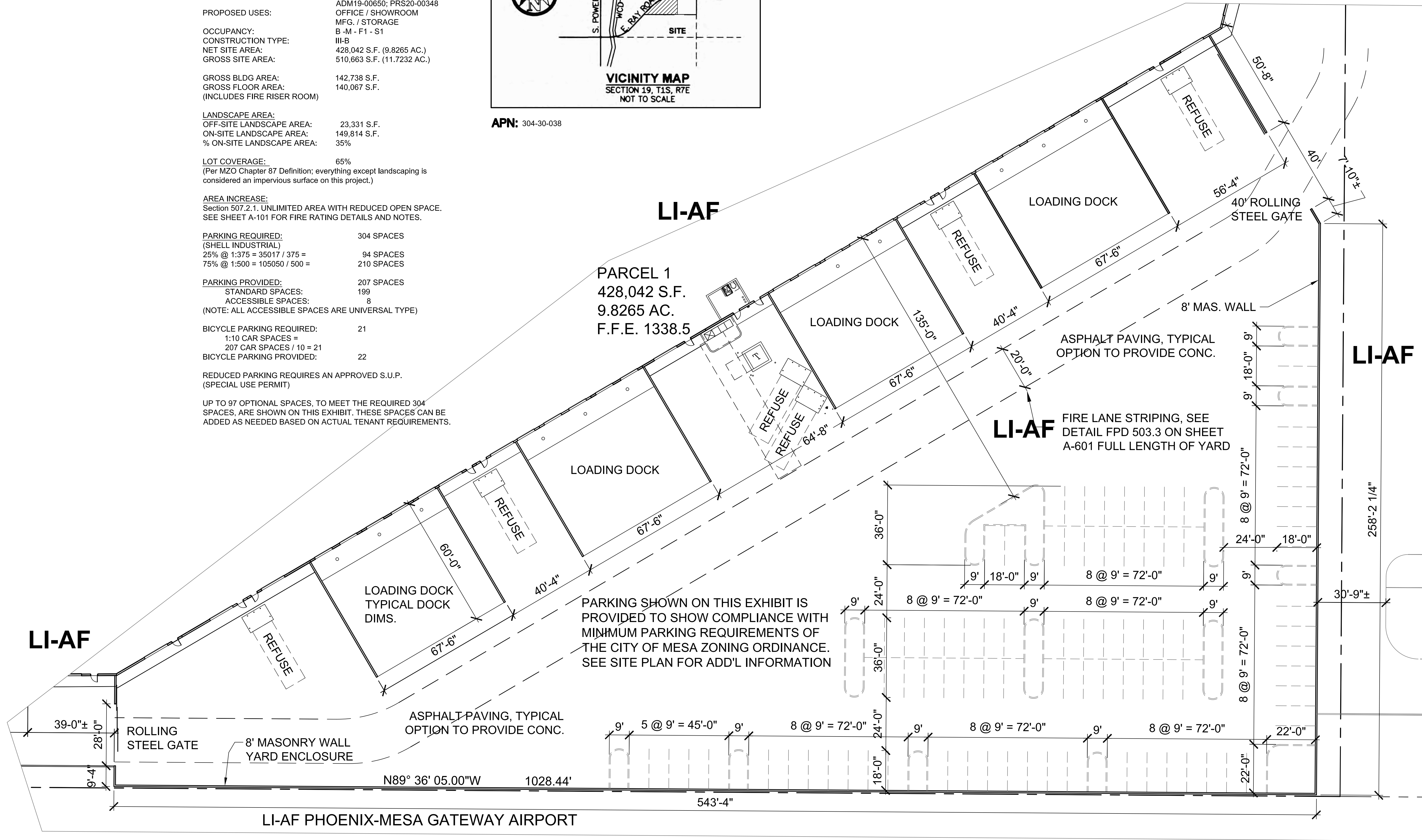
BICYCLE PARKING REQUIRED: 21  
1:10 CAR SPACES = 207 CAR SPACES / 10 = 21  
BICYCLE PARKING PROVIDED: 22

REDUCED PARKING REQUIRES AN APPROVED S.U.P.  
(SPECIAL USE PERMIT)

UP TO 97 OPTIONAL SPACES, TO MEET THE REQUIRED 304 SPACES, ARE SHOWN ON THIS EXHIBIT. THESE SPACES CAN BE ADDED AS NEEDED BASED ON ACTUAL TENANT REQUIREMENTS.



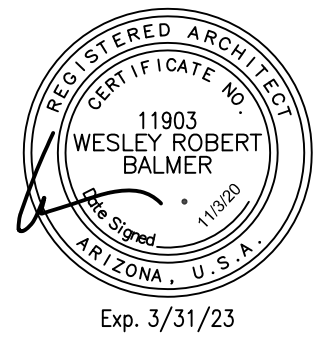
APN: 304-30-038



SUP PKG. EXHIBIT  
SCALE 1" = 20'

SEE SHEET A-100 FOR  
COMPLETE SITE PLAN

THIS DRAWING IS AN INSTRUMENT  
OF SERVICE AND IS THE PROPERTY  
OF BALMER ARCHITECTURAL GROUP  
INC. THIS DRAWING MAY NOT BE  
REPRODUCED NOR REPRODUCTION  
HEREOF USED, WITHOUT THEIR  
WRITTEN PERMISSION © 2020  
BALMER ARCHITECTURAL GROUP, INC.  
3425 E. CAMELBACK RD., SUITE 775  
PHOENIX, ARIZONA 85016  
PH: 602-954-0718 FAX: 602-468-9660  
E-MAIL: ADMIN@BAG-INC.COM



AIRGATE I  
E. RAY ROAD, MESA AZ.  
SUP - PKG EXHIBIT

SUP-1  
40005.01  
03NOV020

