

FOR
AIRGATE 1

IMPROVEMENT NOTES

Balmer Architectural Group, INC.
2425 E. Camelback Road, Suite 775
Phoenix, AZ 85016
Contact: Victor E. Kollasch
Phone: (602)954-6718
Email: vkollasch@bag-inc.com

XCL Engineering, L.L.C.
1460 S. Karen Dr.
Chandler, AZ 85286
Contact: Omar Cervantes, PE
Phone: (480)275-2711
Email: ocervantes@xclengineering.com

Phx-Mesa Gateway Airport 193, LLC
c/o Orsett Properties, LTD.
5353 North 16th Street, Suite #105
Phoenix, AZ 85016
Contact: Steve Vincent
Phone: (602)241-3220
Email: vincent@orsett.com

ID	DESCRIPTION
1	NEW ASPHALT PAVEMENT.
2	NEW CONCRETE CURB & GUTTER (TYPICAL).
3	NEW CONCRETE SIDEWALK (TYPICAL).
4	NEW SCREEN WALLS.
5	NEW STORM DRAIN INLET.
6	NEW HDPE STORM DRAIN PIPE.
7	NEW UNDER GROUND MC-4500 STORMTECH RETENTION TANKS. PAVEMENT.
8	NEW CONCRETE LOADING DOCK.
9	NEW PUMP SYSTEM.
10	NEW GATE.
11	STORMDRAIN DISCHARGE POINT
12	NEW ELECTRICAL TRANSFORMER.
13	NEW DOMESTIC & LANDSCAPE WATER METERS
14	NEW FIRELINE BACKFLOW PREVENTER.
15	NEW TRASH ENCLOSURE.
16	8' HEIGHT CMU WALL.
17	NEW FIRE HYDRANT.
18	NEW 12" WATER FIRE LINE.
19	PARKING (TYPICAL).

SECTION 19, T1S, R7E
NOT TO SCALE

Basis of bearing North 00 degrees 53 minutes 56 seconds West, the East line of the Southeast quarter Section 19, Township 1 South, Range 7 East of the Gila and Salt River Base and Meridian, Maricopa county, Arizona.

Benchmark city of Mesa brass tag - top of curb - NE corner of Power Road & Interstate 202 - Elevation 1324.10 NAVD88

The site is undisturbed desert land. The new improvements will provide with a retention basin and underground pipe collecting the 100yr-2hr event per City of Mesa Engineering and Design Manual.

DRAINAGE CALCULATIONS

$$VOL_{REQ} = C_w \times (P/12) \times A$$
 $C_w = 0.88$ (Weighted Coefficient)

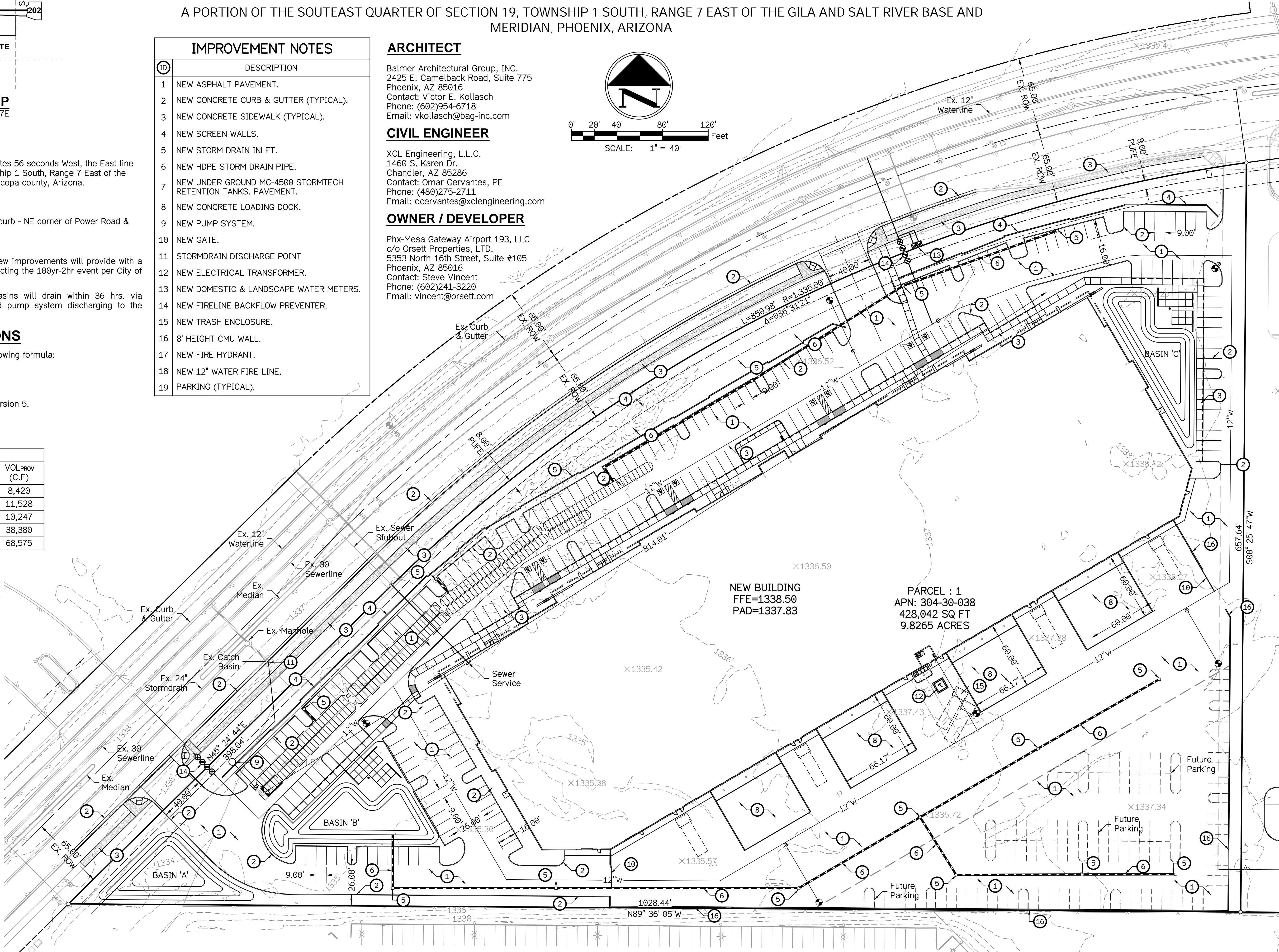
A = Site Area, 428,042 Sq.Ft.

VOL_{PROV} = volume provided

CALCUL

CALCULATIONS			
BASINS	AREA (S.F.)	VOL.REQ (C.F.)	VOL.PROV (C.F.)
BASIN 'A'	428,042	68,430	8,420
BASIN 'B'			11,528
BASIN 'C'			10,247
UNDEGROUND			38,380
		Total	68,575

	Found Monument as Notes
	Found Brass Cap Flush
	Found Brass Cap in Hand Hole
	Set 1/2" Rebar
	Electric Transformer
	Electric Pull Box
	Light Pole w/Arm
	Catch Basin
	Storm Drain Manhole
	Fire Hydrant
	Water Valve
	Water Meter
	Water Back Flow Preventer
	Sewer Manhole
	Barricade
	Property Line
	Roadway Center Line
	Right-of-way (ROW)
	Easement Line (PUE, Esmnt.)
	Breakline
	Barbed Wire Fence
	Water Line (Size noted)
	Sewer Line (Size noted)
	UGL
	Underground Electric Line
	Stormdrain Pipe
	New Asphalt
	Concrete
	Existing Asphalt



www.xclengineering.com

Professional Engineer Seal for Oscar Omar Cervantes, State of Arizona, License No. 48178, expires 9/30/2023.

AIRGATE 1
7410 EAST RAY ROAD
MESA, AZ 85212

150

 \ddot{O}

CALI

120

DATE

DRAWING

PGD1
SHEET 1 OF 1