

# DESERT MEDICAL

**Comprehensive Sign Program | January 20, 2020**

**1432, 1450, 1500, 1520 South Dobson Road Mesa, Arizona 85202**

**Revision 9 | December 08, 2020**



Steven Johnson  
Cell - 602.526.5563  
Office - 623.780.1544  
2507 W. Villa Rita Dr.  
Phoenix, AZ 85023

# TABLE OF CONTENTS

Site Contact Information	Page 3
Sign Specifications And Requirements	Page 4-6
Monument & Directional Sign Cover, Matrix & Site Plan	Page 7-9
Sign Type A: 14'-0" Monument	Page 10
Sign Type B: 8'-0" Directional	Page 11
Sign Type C: 6'-10" Directional	Page 12 - 13
Sign Type D: 5'-9" Directional	Page 14 - 15
Sign Type E: 5'-9" Directional	Page 16 - 17
Wall Sign Cover, Matrix & Site Plan	Page 18 - 20
Building Address ID Pan Channel Numbers	Page 21
Building ID (DESERT MEDICAL CAMPUS) Pan Channel Letters	Page 22
Campus Map	Page 23
Building Elevations and Sign Bands	Page 24 - 32
Typical Wall Sign Sections	Page 33
Sign Type Examples	Page 34

# SITE CONTACT INFORMATION

**PROJECT**

Desert Medical Campus  
1432, 1450, 1500 & 1520 South Dobson Road, Mesa, Arizona 85202

**PARCEL INFORMATION**

134-43-014H, 134-43-014M, 134-43-014L, 134-43-014B, 134-43-017, 134-43-018B,134-43-016B

**ZONING**

NC, City of Mesa

**Owner**

LHT Phoenix, LLC and VTR Desert Samaritan, LLC, Lillibridge Healthcare Services, c/o Ventas, Inc.  
353 North Clark Street, Suite 3300, Chicago, Illinois 60654

**SIGNAGE CONSULTANT**

Signs Plus  
2507 West Villa Rita Drive  
Phoenix, AZ 85023  
602-526-5563  
Steven Johnson  
steven@arizonasignsplus.com

# SIGN SPECIFICATIONS AND REQUIREMENTS

## Narrative

These criteria have been established for the purpose of maintaining a continuity of quality and aesthetics throughout the area for the mutual benefit of all tenants, and to comply with the approved Comprehensive Sign Plan for the development, regulations of the City of Mesa Sign Ordinance, building and electrical codes of any governmental authority having jurisdiction. Conformance will be strictly enforced, and any non compliant sign(s) installed by a Tenant shall be brought into conformance at the sole cost and expense of the Tenant. This criteria is subject to final approval by the City of Mesa as part of a Comprehensive Sign Plan submittal. If a conflict is found to exist between these criteria and the final criteria approved by the City of Mesa, the latter shall prevail.

## Design Concepts

Freestanding signs are “excerpts” of architectural components of the building theme and materials. Instead of mini buildings, the freestanding monument and directional is a statement in the environment. Architectural and textured walls that create simple expression for the project identification. Accent elements and materials are used for building identification.

All signage elements focus on a simple vocabulary of materials – rock, steel, mass of materials, planting, lighting and colors. Combined with the graphic materials of aluminum, dimensional lettering and logo treatments, signage becomes representative of established brands within the overall design theme and palettes. Variations in design distinguish the different uses on the site – through simplicity – not over designed or cluttered with details.

## PROCEDURE

### I. GENERAL PROVISIONS

1. All signs and signage programs must conform to the requirements of this CSP, the City of Mesa, and all applicable Laws. Applications and submittals for signage permits shall be per the City of Mesa procedure and requirements.
2. Signs shall identify the person or company operating the use conducted on the Parcel. No off-premises advertising is permitted.

### II. GENERAL REQUIREMENTS

1. Each electrical sign, and the installation thereof, shall be UL Listed or equivalent and comply with all applicable Laws.

2. Owner shall obtain all necessary permits for signs and the construction and installation of signs.
3. No labels shall be placed on the exposed surfaces of signs except those required by applicable Laws. Required labels shall be applied in inconspicuous locations.
4. All penetrations of the building structure required for installation shall be neatly sealed in a watertight manner.
5. Tenants may use their choice of black, gray, or white lettering for all letters and signage. The color options are white acrylic, 3M Dual Color Film Black 3635-222, or 3M Day/Night Film Smoke Gray 3635-91. The tenant corporate logo or insignia may be color of tenant choice but will require written approval by owner.
6. Any sign that does not conform with the requirements of this CSP, or, was not approved by Owner as required hereby, shall be immediately removed or brought into conformance at the Tenant’s expense.

### III. SPECIFIC REQUIREMENTS FOR BUILDING AND CANOPY SIGNAGE

1. Total allowable tenant sign area not to exceed quantities shown on pages 24-27. The landlord is to determine each individual tenant exterior building signage allowance.
2. The square footage for an individual sign will be calculated by using two (2) rectangles that contain the entire sign (Letter descender do not have to be included in the calculating rectangle; for example, the letters “y”, “p”, “q”, “j”, “g”, all have descenders that do not get calculated as a part of the total signage area). Calculating Rectangles may be rotated to allow for unique sign shapes.
3. No one sign or combination of signs shall exceed more than 80% of the horizontal and vertical background on which they are being installed.  
(Example: Maximum spread for a sign for a space thirty (30) feet wide will be twenty-four (24) feet.
4. A minimum of 2 foot spacing is required between tenant signs.

# SIGNS SPECIFICATIONS AND REQUIREMENTS (Continued)

5. All tenant signage may be remote mounted individual pan channel letters or logos.

**A. LIGHTING**

- 1. LED is required for it being a environmentally friendly energy source. All methods are acceptable, internal and halo depending on tenant type. The illumination of any sign shell conform to the requirements of Mesa lighting and electrical code, title 4 of the Mesa City Code.
- 2. All electrical will be U.L. or equivalent approved.
- 3. Signage will be internally illuminated unless otherwise approved in writing by the Landlord.
- 4. Electrical power shall be brought to required location at Owner’s or Tenant’s expense. The routing and location of other required items shall not be visible on the front of fascia.
- 5. Transformers or power supplies shall be concealed or behind fascia mounted in metal boxes.

**B. DETAIL DRAWING**

- 1. A PDF digital file with the complete sign detail package by Owner’s sign company, shall be submitted to the Landlord for final review and approval.
- 2. Drawing shall indicate the following specifications:
  - a. Material type, thickness, and colors.
  - b. Type of illumination.
  - c. Mounting details.
- 3. Drawing must include fascia cross section showing electrical connections.

**C. SIGNAGE REMOVAL**

Tenant is allowed to remove their sign for whatever reason, Tenant shall patch and repair damage to the building to Owner’s satisfaction. Tenant’s Sign Contractor shall repair damage caused by said contractor’s work, or by its agents or employees and Tenant shall be liable for the operations of Tenant’s Sign Contractor.

**D. WINDOW SIGNAGE**

Window signage shall not exceed two (2) square feet and is limited to tenant’s name, hours, and phone numbers.

**E. TEMPORARY SIGNS**

Temporary signs will be permitted in compliance with Mesa code and with approval from Landlord.

**F. ADDRESS SIGNS**

Each Tenant is required to display a suite number above or beside the door of 2”-4” 3M White vinyl numbers using Arial Bold font. Vinyl will be applied at 5’ in height on the door itself, if glass or in the glass sidelight or window on the strike side of a door.

**G. THE FOLLOWING ARE NOT ALLOWED**

- Roof signs
- Cloth signs or streamers hanging in front of business.
- Exposed seam tubing.
- Animated or moving components.
- Intermittent or flashing illumination.
- Iridescent painted signs
- Letter mounted or painted-on illuminated panels.
- Signs or letters painted directly on any surface.
- Signs will not be permitted to be installed or placed along perimeter of Property.
- Raceway Signs
- Cabinet Signs
- Cloud Signs

# SIGNS SPECIFICATIONS AND REQUIREMENTS (Continued)

**IV. SPECIFIC REQUIREMENTS FOR FREESTANDING SIGNS**

**A. MONUMENT SIGNS**

Monument signs will be designed, fabricated, illuminated and installed on South Dobson Road in accordance with the City of Mesa Code and the design, specifications, and general locations contained within this CSP.

**B. DIRECTIONAL SIGNS**

May be placed after receiving approval of the Owner. The granting of approval shall be at the discretion of the Owner. All signs should be architecturally consistent with the overall character and design themes set forth in this Comprehensive Sign Plan. Directional signs shall comply with the approved Comprehensive Sign Plan and are subject to sign permit issuance.

**V. SPECIFIC REQUIREMENTS FOR EXISTING SIGNAGE**

**A. EXISTING SIGNAGE**

All existing signs to be removed prior to permitting.

# MONUMENT SIGNS & DIRECTIONALS

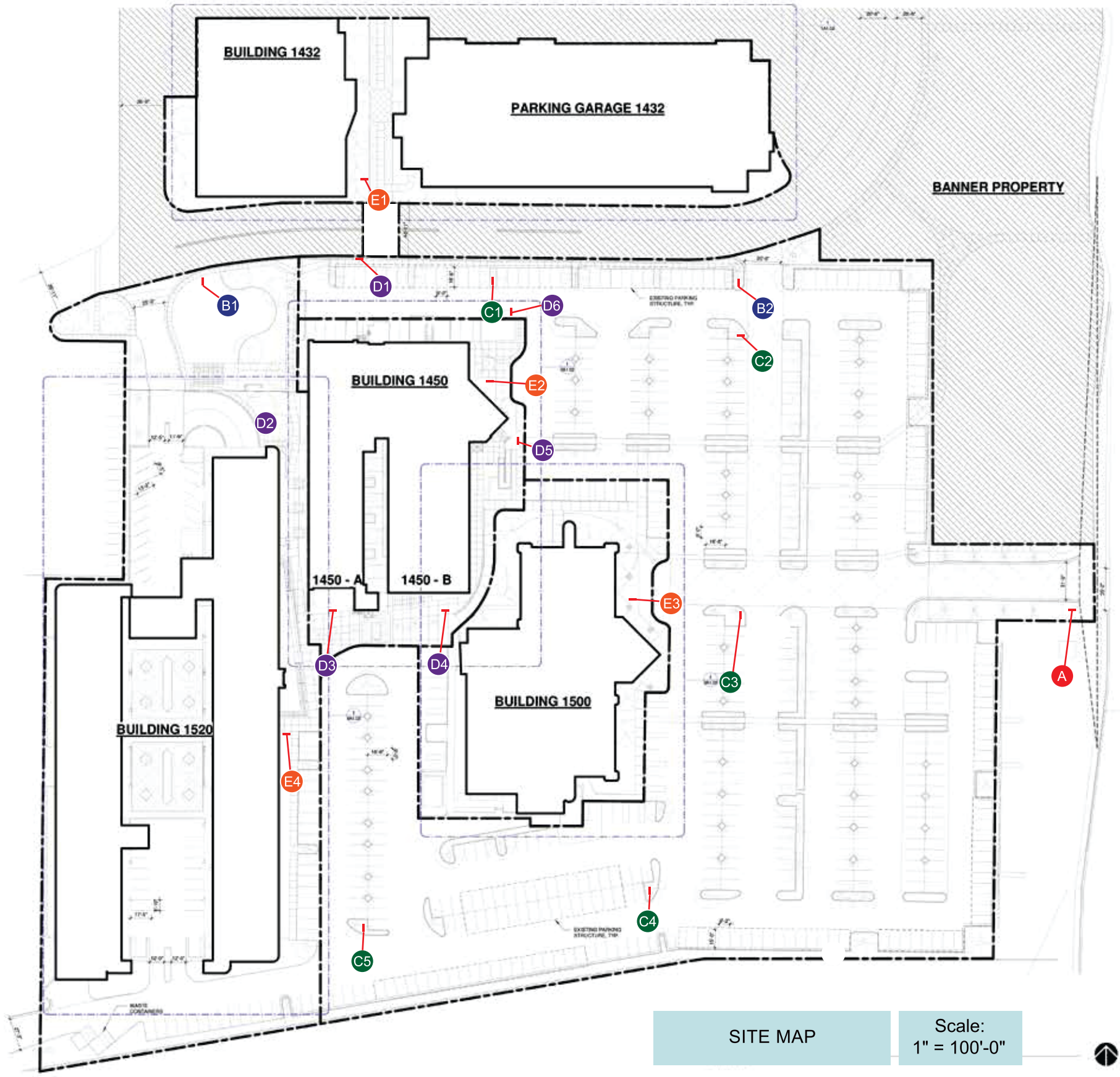
# FREE STANDING SIGN MATRIX

SIGN TYPE	SIGN DESCRIPTION	FUNCTION	PLACEMENT	QUANTITY	SIZE	MATERIALS	ILLUMINATION
A Future Freestanding Sign	Freestanding sign that shows Building ID.	Identification of building address ID.	Located along South Dobson Road	1	Overall Size: 14'-0"x6'-8 1/2" SQFT: 40.13	• Aluminum, Vinyl, Acrylic and Concrete	Internally LED Illuminated
B1, B2 Future Freestanding Sign	Freestanding Directional sign that shows Building ID and direction.	Identification of building address ID.	Located along Banner Desert	2	Overall Size: 8'-0"x3'-10" SQFT: 16.60	• Aluminum, Vinyl, Acrylic and Concrete	Internally LED Illuminated
C1 - C5 Future Directional Sign	Freestanding Directional sign that shows Building ID and direction.	To show the direction that vehicles should go.	Located inside parking lot See Site Map	5	Overall Size: 6'-10"x3'-0" SQFT: 12.64	• Aluminum, Vinyl, Acrylic	Internally LED Illuminated
D1 - D6 Future Directional Sign	Freestanding Directional sign that shows Building ID and direction.	To show the direction that pedestrians should go.	Located with in the development. See Site Map	6	Overall Size: 5'-9"x2'-4" SQFT: 6.75	• Aluminum, Vinyl	Non Illuminated
E1 - E4 Future Directional Sign	Freestanding Directional sign that shows Tenant and direction.	To show the direction of Tenants.	Located with in the development. See Site Map	4	Overall Size: 5'-9"x2'-4" SQFT: 6.75	• Aluminum, Vinyl	Non Illuminated



# SIGNAGE LOCATION PLAN

- A** Primary Identity Monuments
- B1 – B2** Directional
- C1 – C5** Directional
- D1 – D6** Directional
- E1 – E4** Directional



1432, 1450, 1500, 1520 South Dobson Road Mesa, Arizona 85202

# MONUMENT SIGN LAYOUT

**Primary Identity Monuments (14'-0") Qty. 1**  
**Sign Type A** Monument will provide street level building identification to be visible to street traffic along South Dobson Road.

**ID CONSTRUCTION**  
Double faced aluminum framed cabinet, skinned with aluminum panels. "DESERT MEDICAL" will be Illuminated 3/4" clear push thru acrylic with a 3M white translucent vinyl overlay. Structure around address panels will be cast integral color concrete.

**PANELS**  
The panels will be routed aluminum backed with white acrylic and Illuminated 3/4" clear push thru acrylic with 3M white translucent vinyl overlay.

**COLORS AND FINISHES**  
P1, P2, P3, P4, P5 - Painted and sealed with professional automotive grade paint, satin finish with a smooth texture.  
P6 - Painted and sealed with multi color faux concrete professional automotive grade paint, medum montex texture finish.

**ILLUMINATION**  
Internally illuminated with white LEDs.

## PAINT COLOR PALETTE

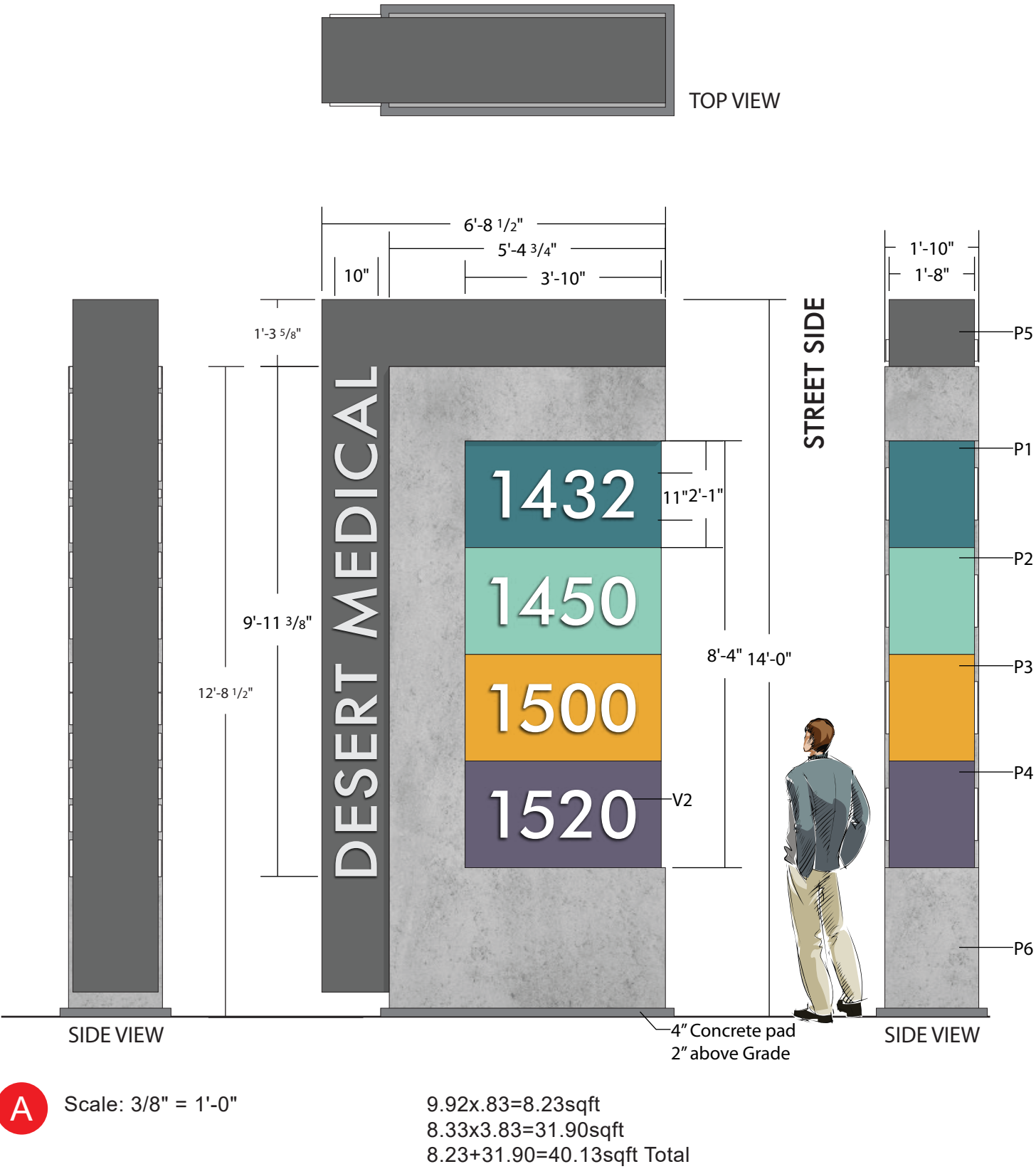
<b>P1</b>  BLUE RAL 5025 RGB 63,123,133	<b>P2</b>  SEA FOAM 45/0/33/0 139/208/187
<b>P3</b>  YELLOW / GOLD RAL 1032 RGB 235,168,51	<b>P4</b>  PURPLE RAL 4011 RGB 100,94,118
<b>P5</b>  TBD	<b>P6</b>  Faux Concrete

## MATERIAL PALETTE

Raw Aluminum	White Acrylic
	Clear Acrylic

## VINYL

V2  3M White (3630-20)
------------------------------



1432, 1450, 1500, 1520 South Dobson Road Mesa, Arizona 85202



# DIRECTIONAL SIGN LAYOUT

## Directional Signs (8'-0") Qty. 2

**Sign Type B** Directional will provide street level building identification to be visible to street traffic along Banner Desert.

### DIRECTIONAL CONSTRUCTION

Double faced aluminum framed cabinet, skinned with aluminum panels. "DESERT MEDICAL" will be illuminated 3/4" clear push thru acrylic with a 3M white translucent vinyl overlay. Structure around address panels will be cast integral color concrete.

### PANELS

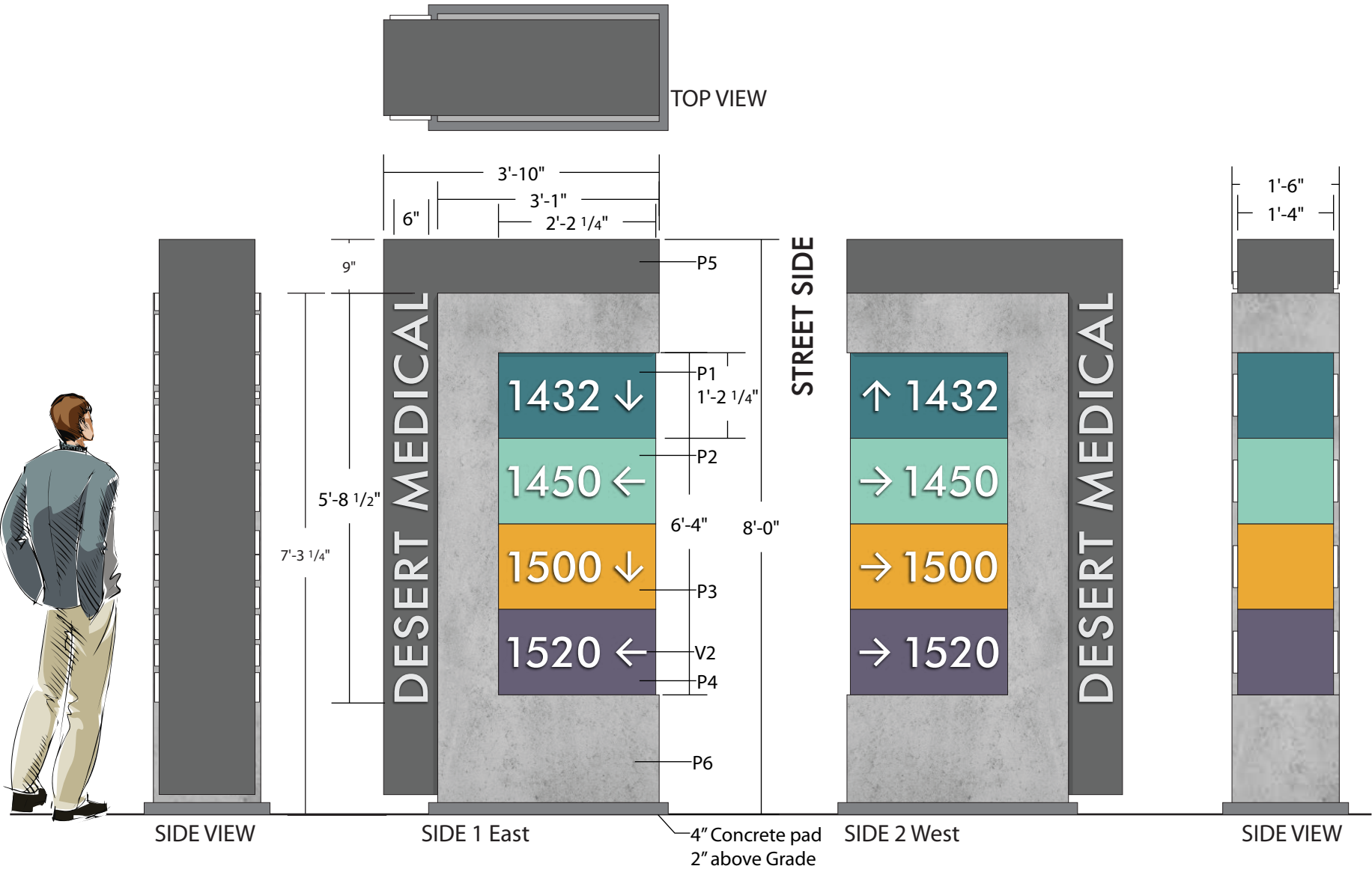
The panels will be routed aluminum backed with white acrylic and illuminated 3/4" clear push thru acrylic with 3M white translucent vinyl overlay.

### COLORS AND FINISHES

P1, P2, P3, P4, P5 - Painted and sealed with professional automotive grade paint, satin finish with a smooth texture.  
P6 - Painted and sealed with multi color faux concrete professional automotive grade paint, medum montex texture finish.

### ILLUMINATION

Internally illuminated with white LEDs.



## PAINT COLOR PALETTE

P1 BLUE RAL 5025 RGB 63,123,133	P2 SEA FOAM 45/0/33/0 139/208/187
P3 YELLOW / GOLD RAL 1032 RGB 235,168,51	P4 PURPLE RAL 4011 RGB 100,94,118
P5 TBD	P6 Faux Concrete

## MATERIAL PALETTE

Raw Aluminum	White Acrylic
Clear Acrylic	

## VINYL

V2 3M White (3630-20)
--------------------------

**B1** Scale: 1/2" = 1'-0"  
5.75x.5=2.87sqft  
6.33x2.17=13.73sqft  
2.87+13.73=16.60sqft Total

**B2** Scale: 3/8" = 1'-0"

1432, 1450, 1500, 1520 South Dobson Road Mesa, Arizona 85202

# DIRECTIONAL SIGN LAYOUT

Directional (6'-10") Qty. 5

Sign Type C will provide street level guidance through out the development for vehicles.

DIRECTIONAL CONSTRUCTION

Double faced aluminum framed cabinet, skinned with aluminum panels. "DESERT MEDICAL" will be Illuminated 1/2" clear push thru acrylic with a 3M white translucent vinyl overlay.

PANELS

The panels will be routed aluminum backed with white acrylic and Illuminated 1/2" clear push thru acrylic with 3M white translucent vinyl overlay.

COLORS AND FINISHES

Painted and sealed with professional automotive grade paint, satin finish with a smooth texture.

ILLUMINATION

Internally illuminated with white LEDs.

EXAMPLE



STREET SIDE

PAINT COLOR PALETTE

P1

BLUE  
RAL 5025  
RGB 63,123,133

P2

SEA FOAM  
45/0/33/0  
139/208/187

P3

YELLOW / GOLD  
RAL 1032  
RGB 235,168,51

P4

PURPLE  
RAL 4011  
RGB 100,94,118

P5

TBD

MATERIAL PALETTE

Raw Aluminum

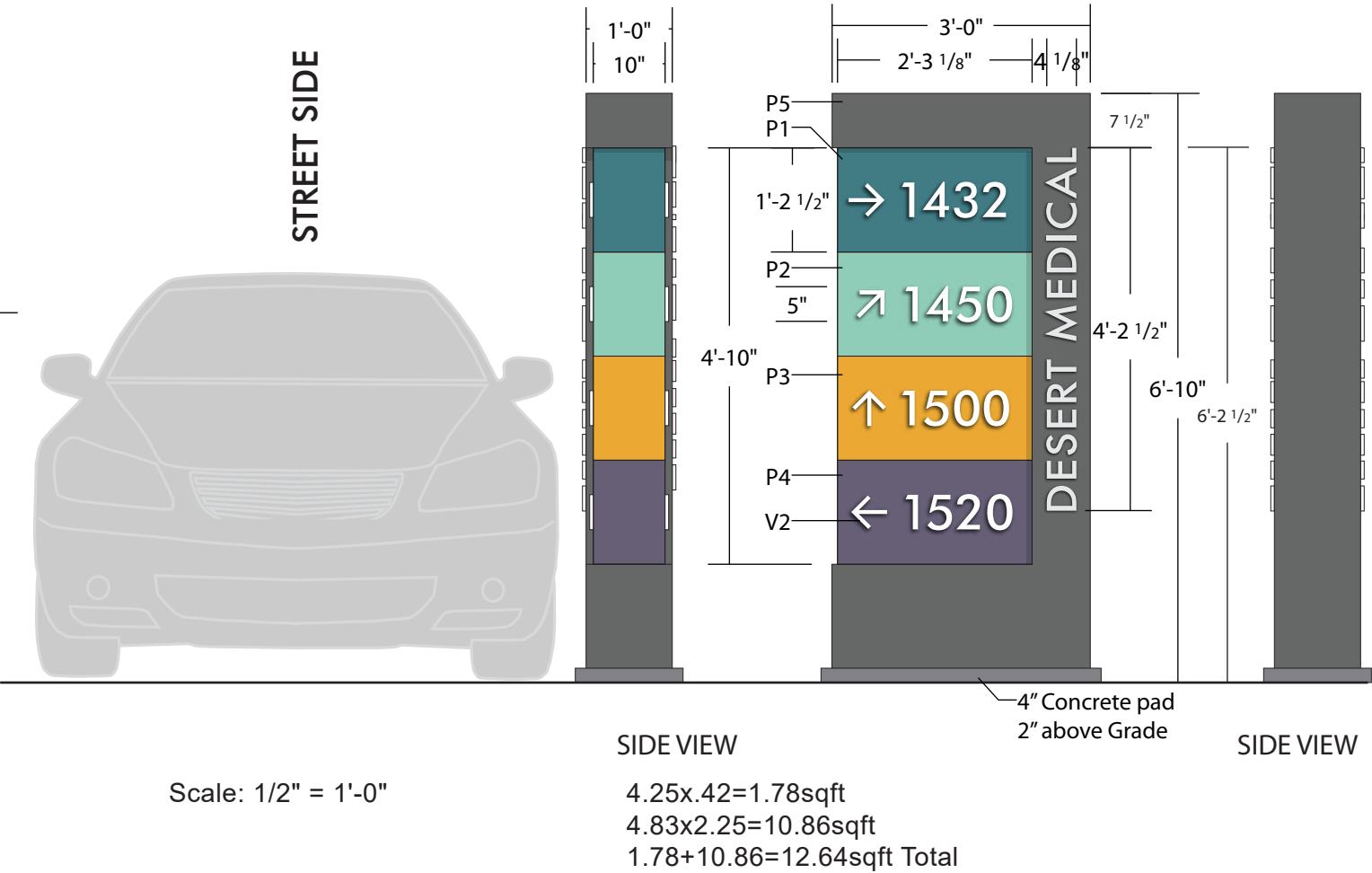
White Acrylic

Clear Acrylic

VINYL

V2

3M White (3630-20)



1432, 1450, 1500, 1520 South Dobson Road Mesa, Arizona 85202

# DIRECTIONAL SIGN LAYOUT

Scale: 1/2" = 1'-0"

Under carport East of speed table.  
Are conceptual in nature for approval.  
Confirm clearance.

Actual directions may vary from what is shown  
and needs to be reconfirmed during the CD  
stage for actual sign permits. These designs  
are conceptual in nature for approval.



1432, 1450, 1500, 1520 South Dobson Road Mesa, Arizona 85202

# DIRECTIONAL SIGN LAYOUT

**Directional (5'-9") Qty. 6**  
**Sign Type D** will provide sidewalk level guidance through out the development for pedestrians.

**DIRECTIONAL CONSTRUCTION**  
Double faced aluminum framed cabinet, skinned with aluminum panels. "DESERT MEDICAL" will be Non Illuminated 1/4" aluminum painted white and stud mounted flush to the sign.

**PANELS**  
The panels will be aluminum with 3M White vinyl copy.

**COLORS AND FINISHES**  
Painted and sealed with professional automotive grade paint, satin finish with a smooth texture.

**ILLUMINATION**  
Non Illuminated

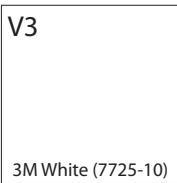
## PAINT COLOR PALETTE

<b>P1</b>  BLUE RAL 5025 RGB 63,123,133	<b>P2</b>  SEA FOAM 45/0/33/0 139/208/187
<b>P3</b>  YELLOW / GOLD RAL 1032 RGB 235,168,51	<b>P4</b>  PURPLE RAL 4011 RGB 100,94,118
<b>P5</b>  TBD	<b>P6</b>  MAP WHITE

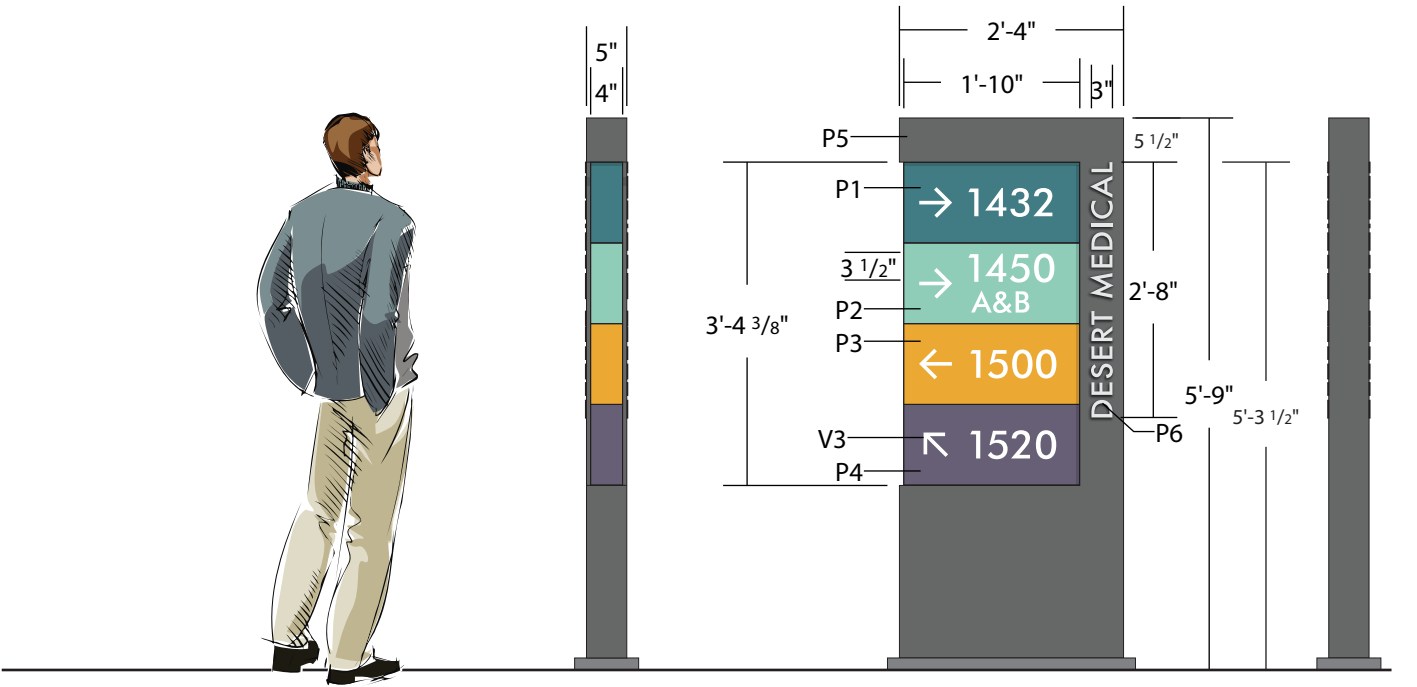
## MATERIAL PALETTE



## VINYL



### EXAMPLE



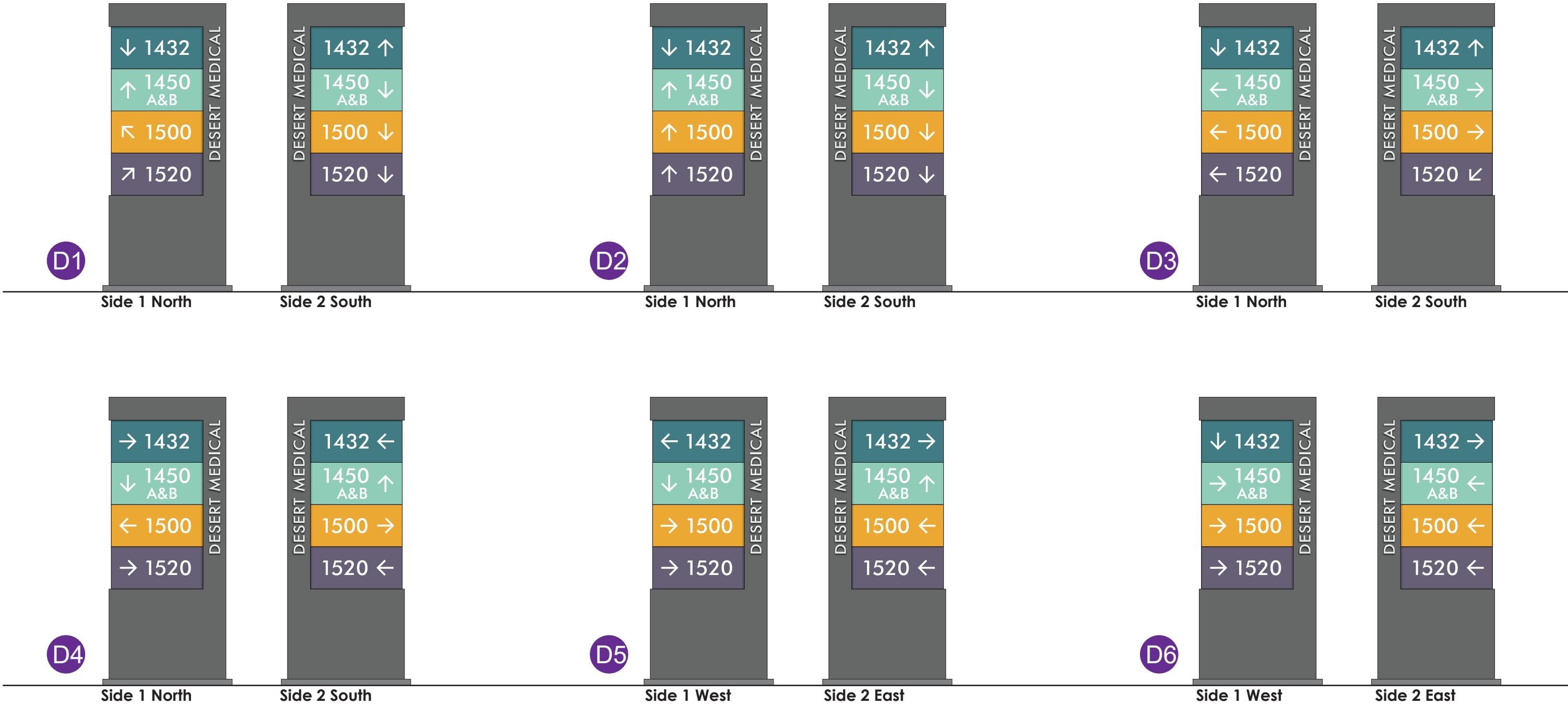
Scale: 1/2" = 1'-0"

SIDE VIEW  
2.67x.25=.66sqft  
3.33x1.83=6.09sqft  
.66+6.09=6.75sqft Total

1432, 1450, 1500, 1520 South Dobson Road Mesa, Arizona 85202

# DIRECTIONAL SIGN LAYOUT

Scale: 1/2" = 1'-0"



1432, 1450, 1500, 1520 South Dobson Road Mesa, Arizona 85202

# DIRECTIONAL SIGN LAYOUT

**Directional (5'-9") Qty. 4**  
**Sign Type E** will provide sidewalk level guidance through out the development for pedestrians.

**DIRECTIONAL CONSTRUCTION**  
Double faced aluminum framed cabinet, skinned with aluminum panels. "DESERT MEDICAL" will be Non Illuminated 1/4" aluminum painted white and stud mounted flush to the sign.

**PANELS**  
The panels will be aluminum with 3M White vinyl copy. These signs may hold up to six (6) tenants, although they may be utilized for as little as three (3) tenants.

**COLORS AND FINISHES**  
Painted and sealed with professional automotive grade paint, satin finish with a smooth texture.

**ILLUMINATION**  
Non Illuminated

## PAINT COLOR PALETTE

P2

SEA FOAM  
45/0/33/0  
139/208/187

P3

YELLOW / GOLD  
RAL 1032  
RGB 235,168,51

P4

PURPLE  
RAL 4011  
RGB 100,94,118

P6

MAP  
WHITE

## MATERIAL PALETTE

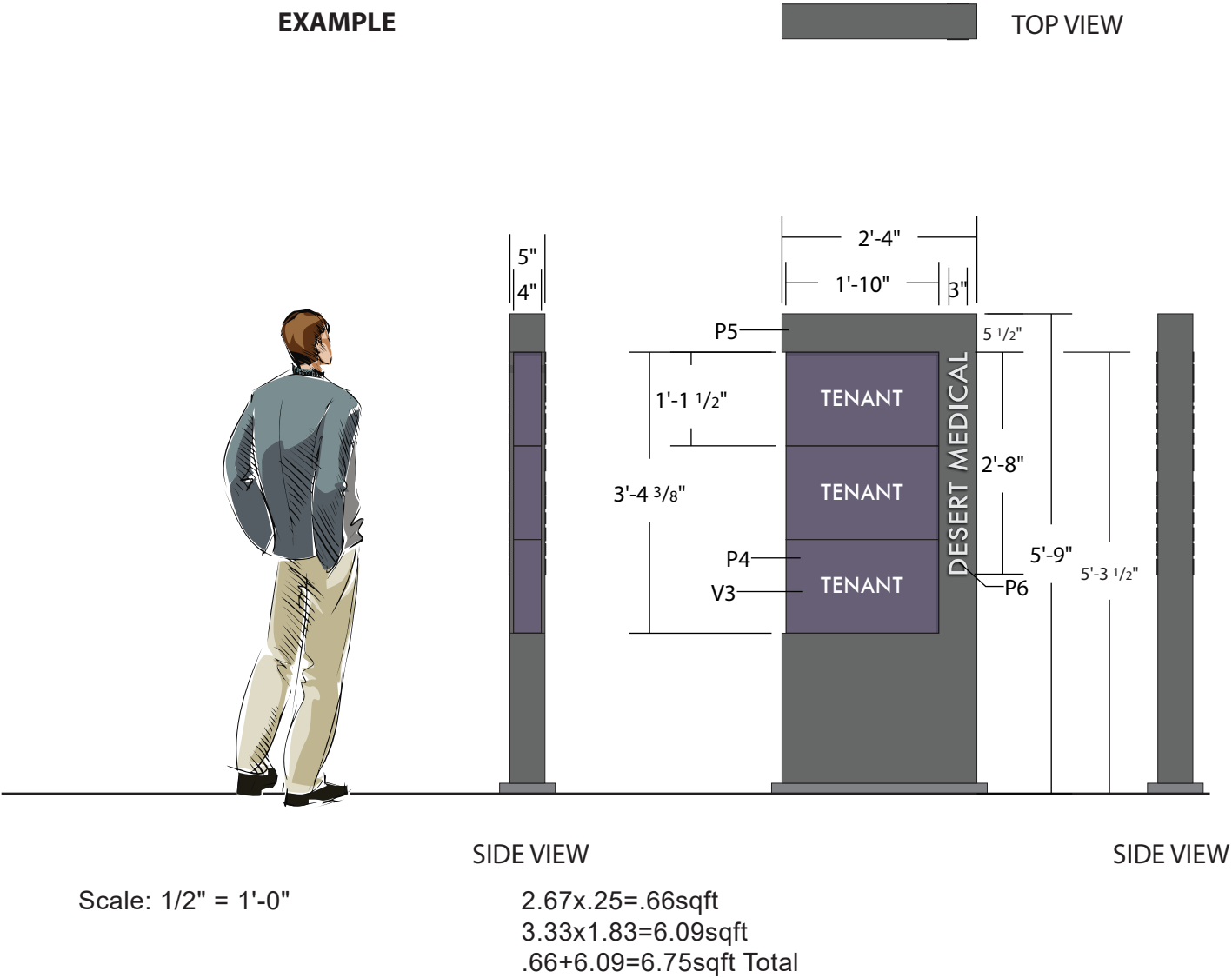
Raw Aluminum

## VINYL

V3

3M White (7725-10)

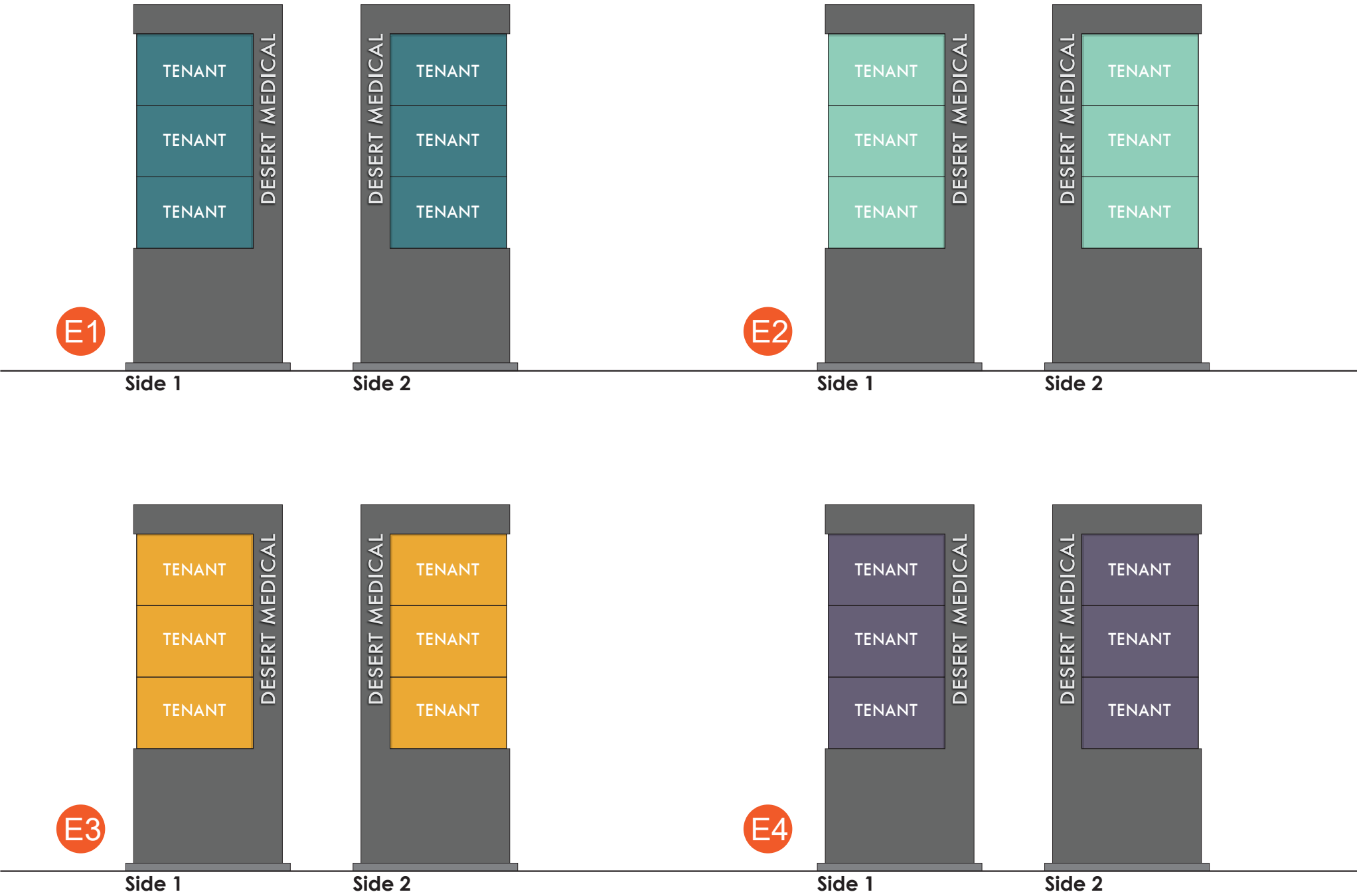
### EXAMPLE





# DIRECTIONAL SIGN LAYOUT

Scale: 1/2" = 1'-0"



1432, 1450, 1500, 1520 South Dobson Road Mesa, Arizona 85202

# WALL SIGNS

# WALL SIGN MATRIX

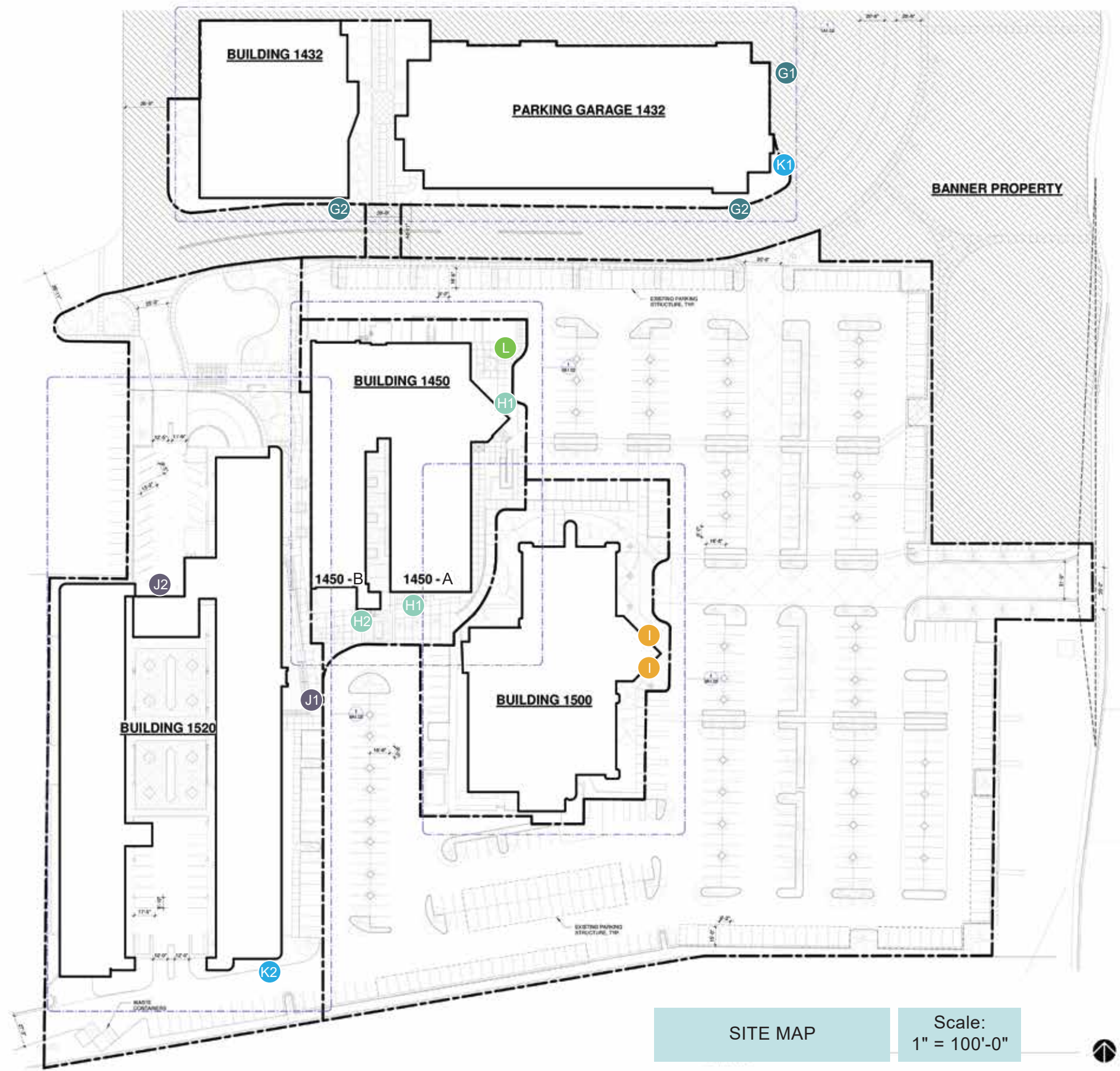
SIGN TYPE	SIGN DESCRIPTION	FUNCTION	PLACEMENT	QUANTITY	SIZE		MATERIALS	ILLUMINATION
G1, G2 Future Pan Channel Numbers	Pan Channel Numbers mounted to building.	Building address ID.	East and South Elevations of Building 1432	2	4'x12'-2"  48.68 SQFT		• Aluminum, Vinyl, Acrylic	Internally LED Illuminated
H1, H2 Future Pan Channel Numbers	Pan Channel Numbers mounted to building.	Building address ID.	East and South Elevations of Building 1450A and 1450B	3	1450A - 4'x16'-2"=64.68sf 1450A - 4'x16'-2"=64.68sf 1450B - 4'x15'-4"=61.32sf		• Aluminum, Vinyl, Acrylic	Internally LED Illuminated
I Future Pan Channel Numbers	Pan Channel Numbers mounted to building.	Building address ID.	East Elevation of Building 1500	2	4'x12'-2"  48.68 SQFT		• Aluminum, Vinyl, Acrylic	Internally LED Illuminated
J1, J2 Future Pan Channel Numbers	Pan Channel Numbers mounted to building.	Building address ID.	East and North Elevations of Building 1520	2	4'x12'-2"  48.68 SQFT		• Aluminum, Vinyl, Acrylic	Internally LED Illuminated
K1, K2 Future Pan Channel Letters	Pan Channel Letters mounted to building.	Building ID.	East Elevation of Building 1432 South Elevation of Building 1520	2	K1 - 39'x2'-1" - 81.12 SQFT K2 - 7'-10'x13'-5" - 105.07 SQFT		• Aluminum, Vinyl, Acrylic	Internally LED Illuminated
L Map	Non Illuminated sign cabinet with a digitally printed map	Campus Map	South wall of the screened HVAC enclosure NE of the 1450 entry.	1	3'-0"x3'-0"		• Aluminum, Vinyl, Acrylic	Non Illuminated
1432 Building	Face Illuminated Pan Channel, Halo Illuminated Reverse Pan Channel	Tenant ID	Tenant choosen sign location on page 25.	3	Max Aggregate 160 sq. ft. is allowed	Max Area Per Sign 53.33 sq. ft.	• Aluminum, Vinyl, Acrylic	Internally LED Illuminated

# WALL SIGN MATRIX

SIGN TYPE	SIGN DESCRIPTION	FUNCTION	PLACEMENT	QUANTITY	SIZE		MATERIALS	ILLUMINATION
1450 Building	Face Illuminated Pan Channel, Halo Illuminated Reverse Pan Channel	Tenant ID	Tenant choosen sign location on page 27.	4	Max Aggregate 172.8 sq. ft. is allowed	Max Area Per Sign 43.2 sq. ft.	• Aluminum, Vinyl, Acrylic	Internally LED Illuminated
1500 Building	Face Illuminated Pan Channel, Halo Illuminated Reverse Pan Channel	Tenant ID	Tenant choosen sign location on page 29.	4	Max Aggregate 163.2 sq. ft. is allowed	Max Area Per Sign 40.8 sq. ft.	• Aluminum, Vinyl, Acrylic	Internally LED Illuminated
1520 Building	Face Illuminated Pan Channel, Halo Illuminated Reverse Pan Channel	Tenant ID	Tenant choosen sign location on page 29.	7	Max Aggregate 354.4 sq. ft. is allowed	Max Area Per Sign 51.2 sq. ft.	• Aluminum, Vinyl, Acrylic	Internally LED Illuminated

# SIGNAGE LOCATION PLAN

- G1 Building 1432 EAST ELEVATION
- G2 Building 1432 SOUTH ELEVATION
- H1 Building 1450A SOUTH and EAST ELEVATION
- H2 Building 1450B SOUTH ELEVATION
- I Building 1500 EAST ELEVATION
- J1 Building 1520 EAST ELEVATION
- J2 Building 1520 NORTH ELEVATION
- K1 Center ID Sign (Desert Medical Campus)
- K2 Center ID Sign (Desert Medical Campus)
- L Campus Map



1432, 1450, 1500, 1520 South Dobson Road Mesa, Arizona 85202

# BUILDING ID ADDRESS NUMBERS

Building Address ID Qty. 10  
Sign Type G, H, I, J will provide building identification.

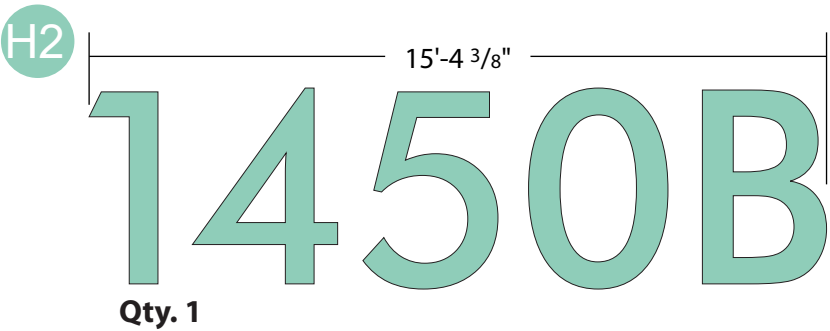
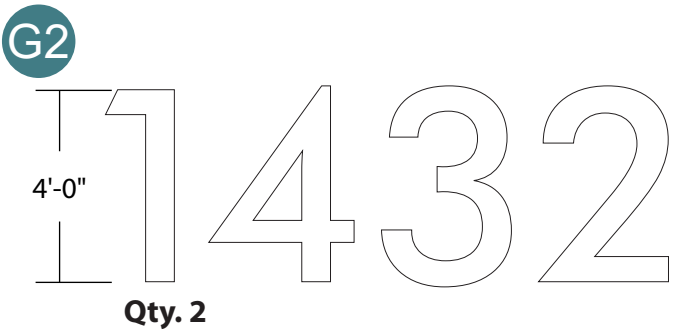
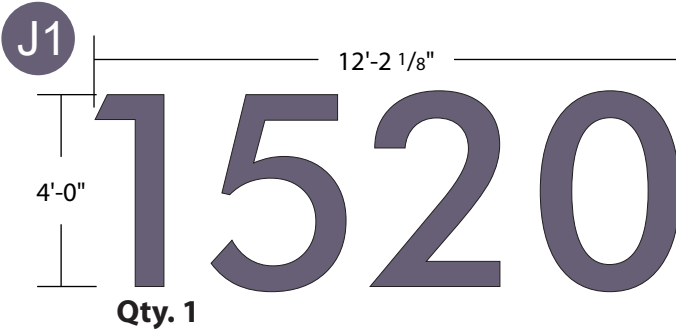
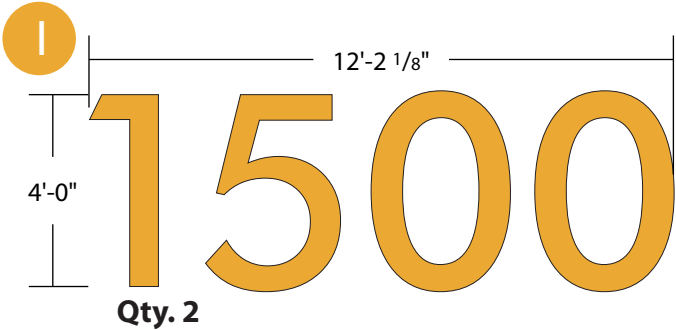
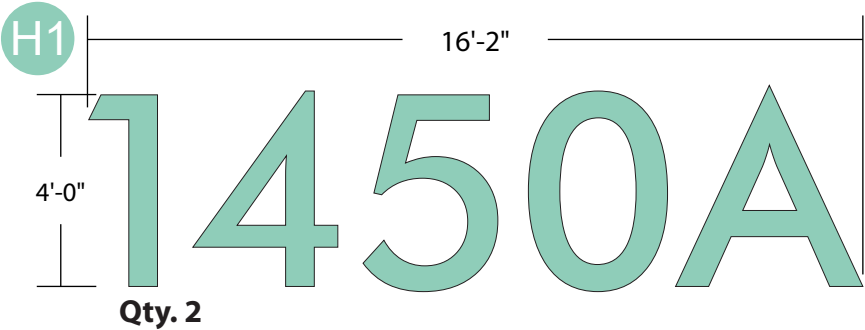
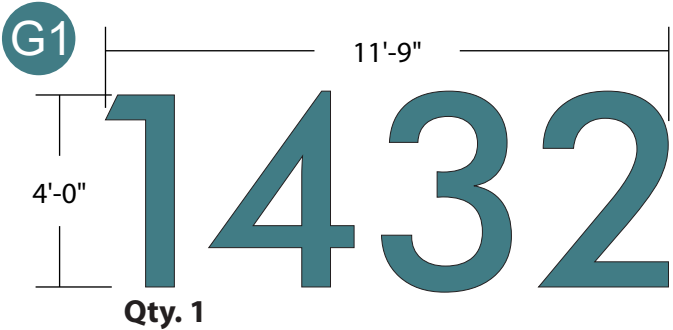
BUILDING ID ADDRESS NUMBERS CONSTRUCTION  
Pan Channel Numbers with white acrylic faces overlaid with a 3M digital print to match paint colors as close as possible with a UV over laminate. They will have 1" trim-cap, a 5" deep aluminum return and a aluminum back. (colors TBD)

MOUNTING  
Numbers will be mounted to the top of the existing canopy's and flush to the building fascia. A survey will be needed to determine mounting method.

ILLUMINATION  
Internally illuminated with white LEDs.

## PAINT COLOR PALETTE

P1 BLUE RAL 5025 RGB 63,123,133	P2 SEA FOAM 45/0/33/0 139/208/187
P3 YELLOW / GOLD RAL 1032 RGB 235,168,51	P4 PURPLE RAL 4011 RGB 100,94,118
P5 WHITE	



Scale:  
1/4" = 1'-0"

1432, 1450, 1500, 1520 South Dobson Road Mesa, Arizona 85202

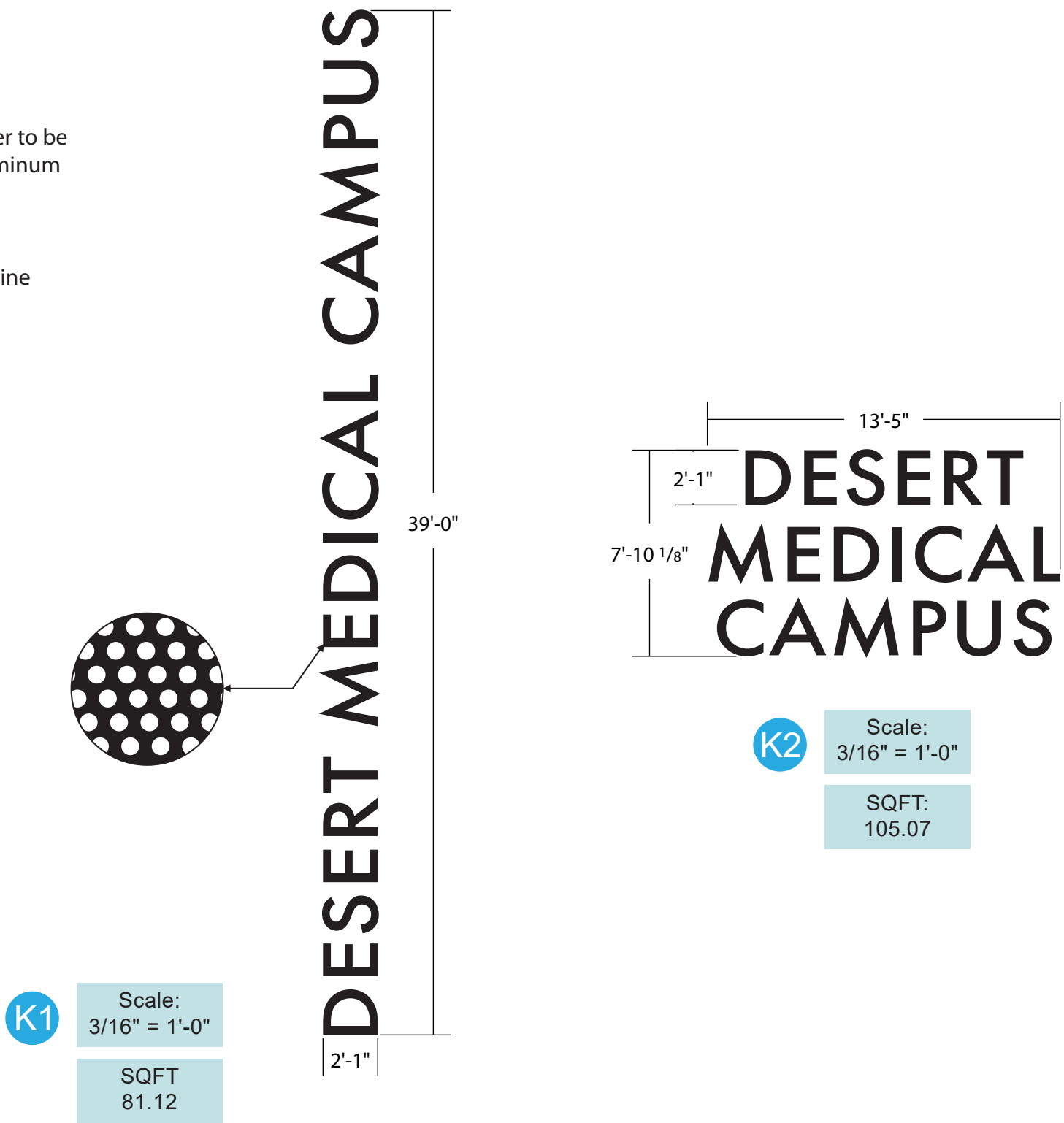
# CAMPUS ID

Campus ID Qty. 2  
Sign Type K will provide building identification.

Campus ID CONSTRUCTION  
Pan Channel letters with white acrylic faces overlaid with 3M Black Perforated vinyl in order to be black during the day and light up white at night. They will have 1" trim-cap, a 5" deep aluminum returns with aluminum backs. (colors TBD)

MOUNTING  
Letters will be mounted to the existing building fascia. A survey will be needed to determine mounting method.

ILLUMINATION  
Internally illuminated with white LEDs.



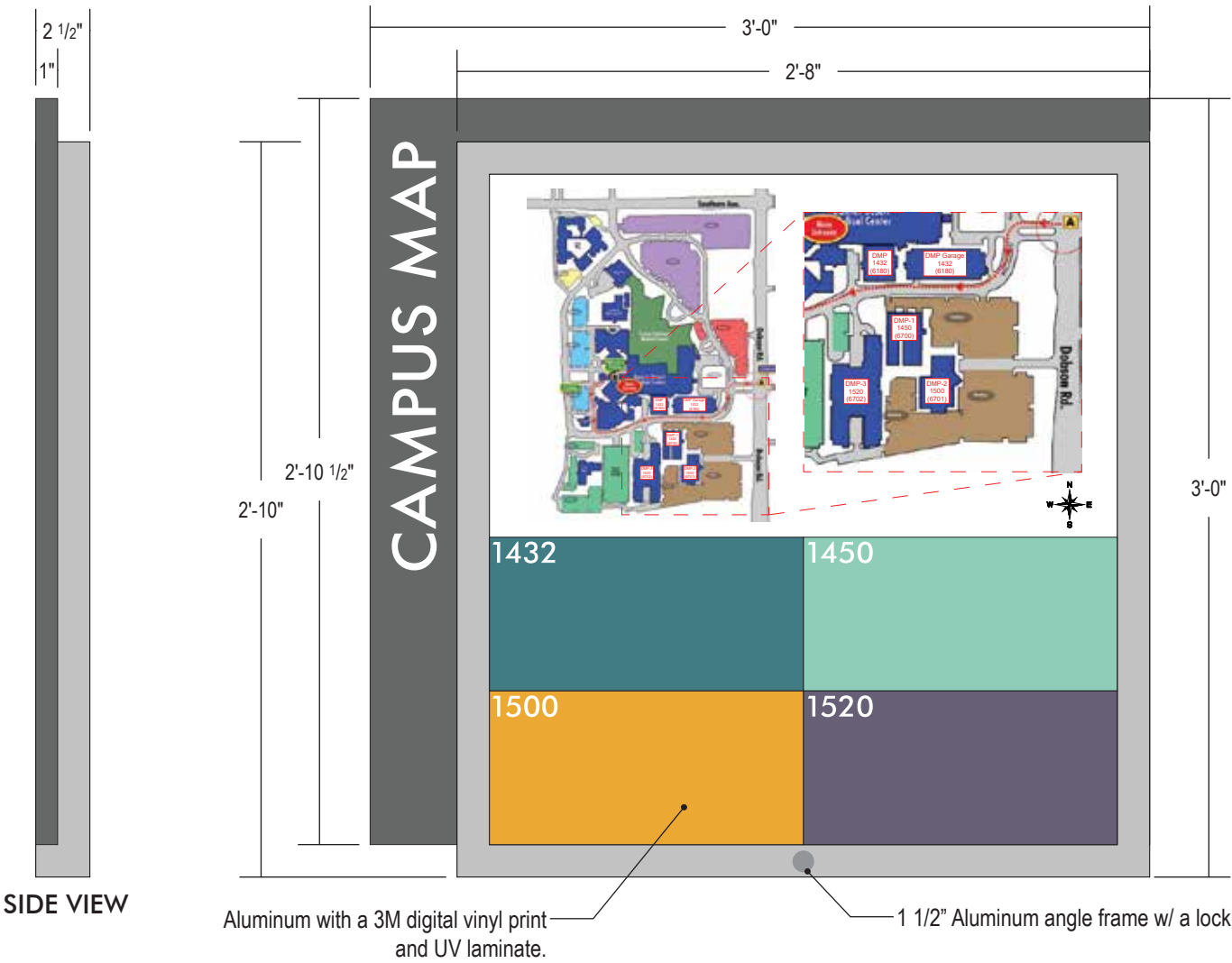


# CAMPUS MAP

Campus ID Qty. 1  
Sign Type L will provide building identification.

Campus Map CONSTRUCTION  
Non illuminated aluminum cabinet with a hinged face and lock.  
Map will be 3M digital vinyl mounted to aluminum.  
"CAMPUS MAP" will be 3M white vinyl.

ILLUMINATION  
Non Illuminated

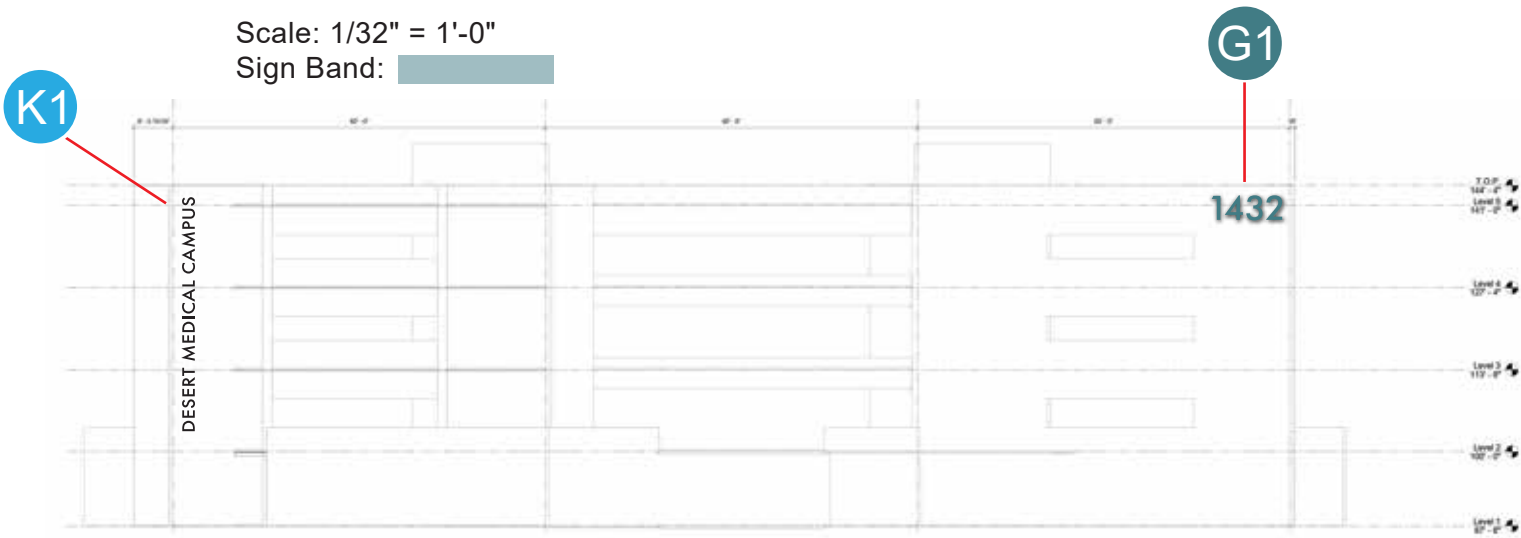


1432, 1450, 1500, 1520 South Dobson Road Mesa, Arizona 85202

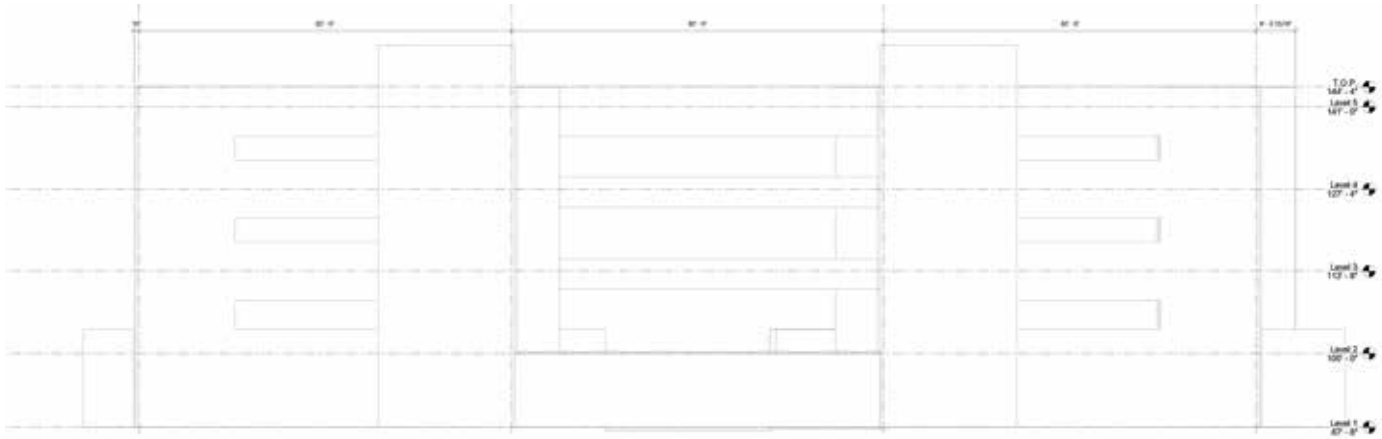


# 1432 PARKING GARAGE

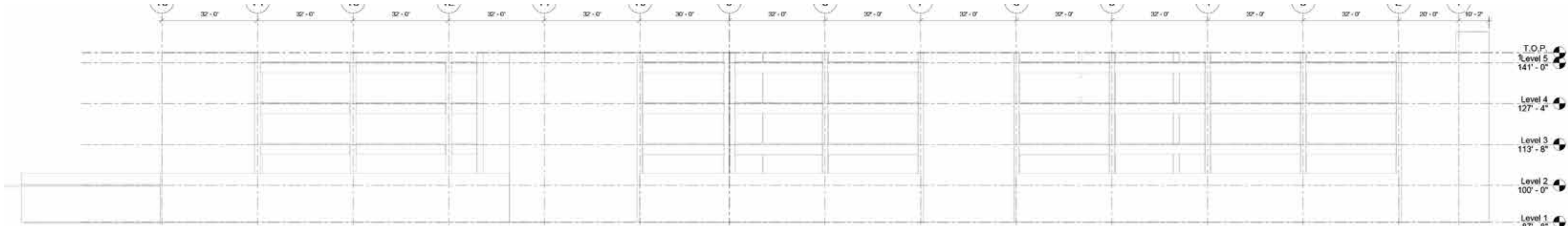
Scale: 1/32" = 1'-0"  
Sign Band:  



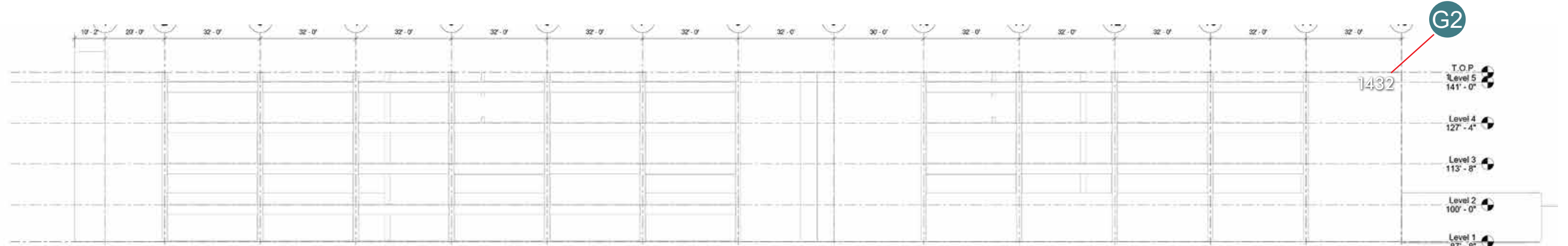
East Elevation



West Elevation



North Elevation

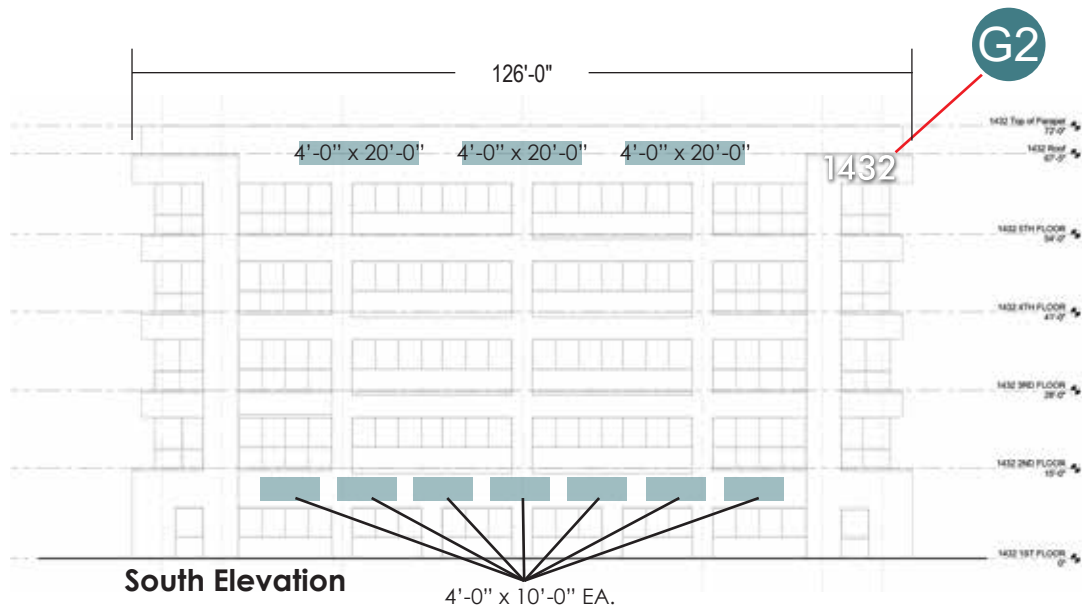


South Elevation

1432, 1450, 1500, 1520 South Dobson Road Mesa, Arizona 85202

# 1432 BUILDING

Scale: 1/32" = 1'-0"  
Sign Band:



NOTE: NO SIGNS WILL BE INSTALLED ON THE NORTH ELEVATION

# 1432 BUILDING CONCEPTUAL SIGNAGE

Scale: NTS



SOUTH ELEVATION



WEST ELEVATION

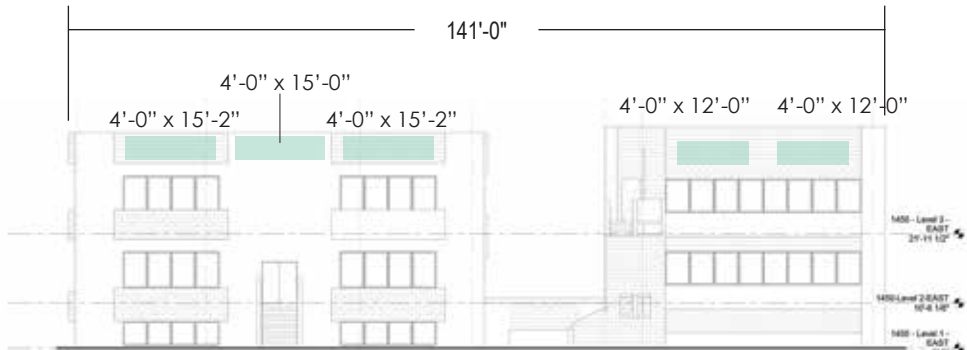
1432, 1450, 1500, 1520 South Dobson Road Mesa, Arizona 85202

# 1450 BUILDING

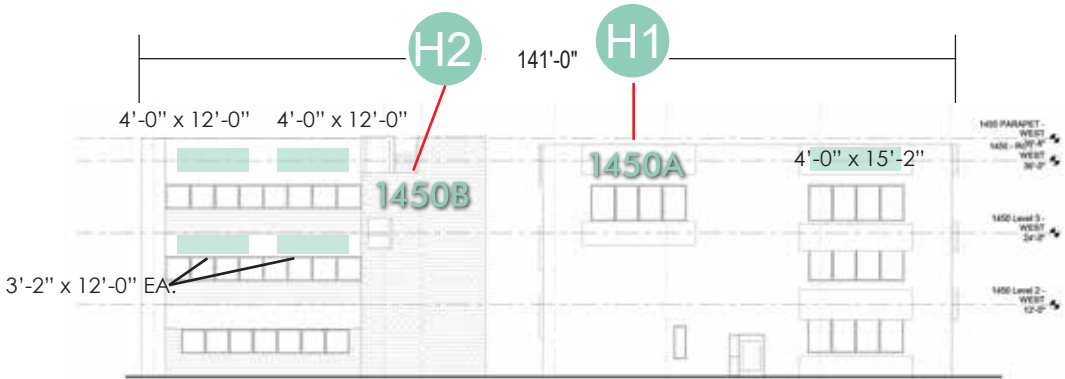
Scale: 1/32" = 1'-0"  
Sign Band:



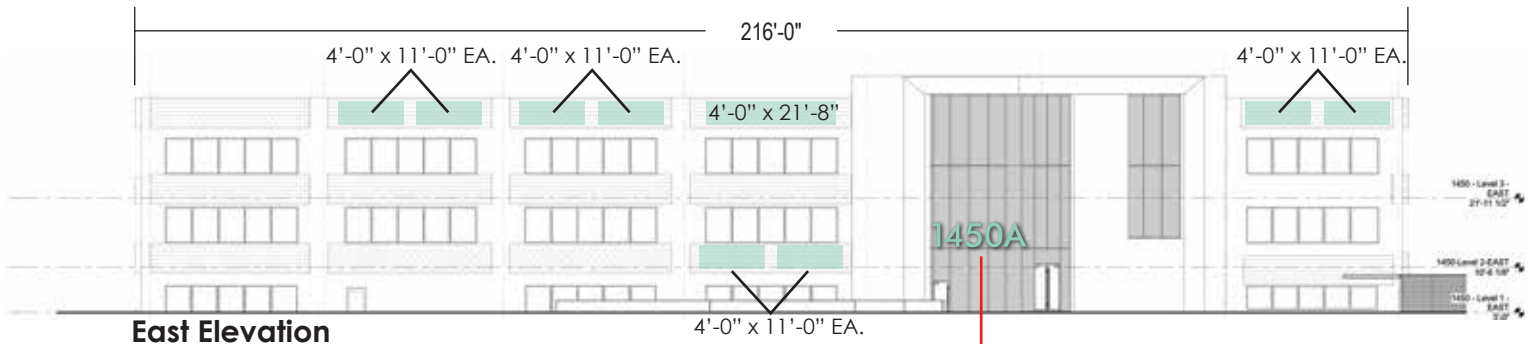
West Elevation



North Elevation



South Elevation



East Elevation

H1

1432, 1450, 1500, 1520 South Dobson Road Mesa, Arizona 85202

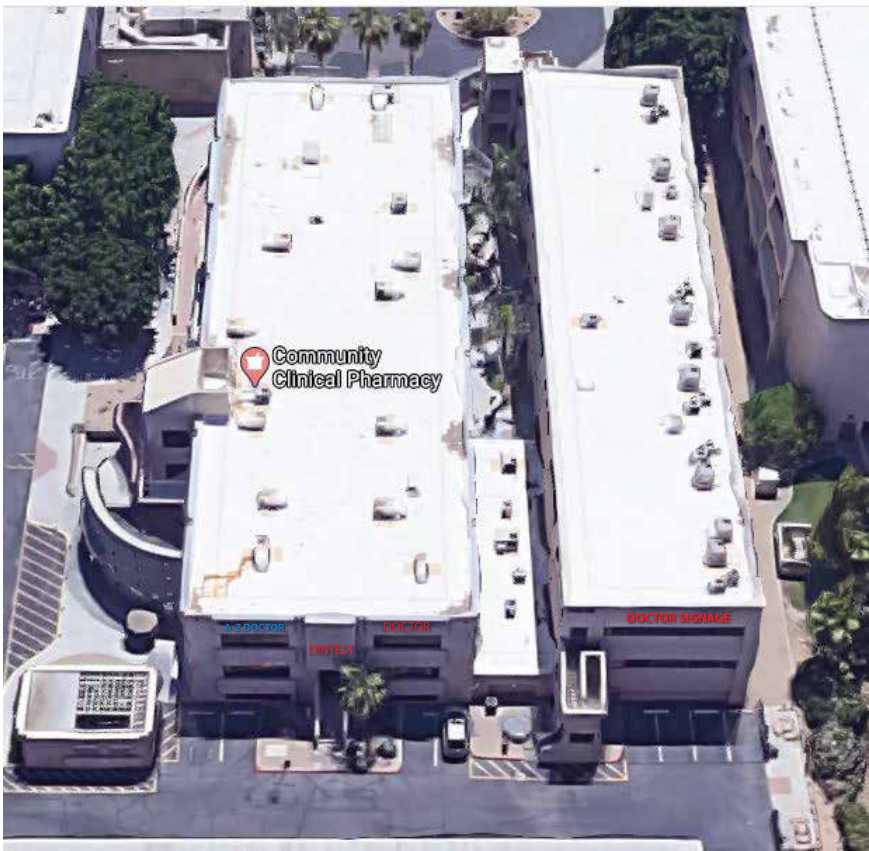


# 1450 BUILDING CONCEPTUAL SIGNAGE

Scale: NTS



EAST ELEVATION



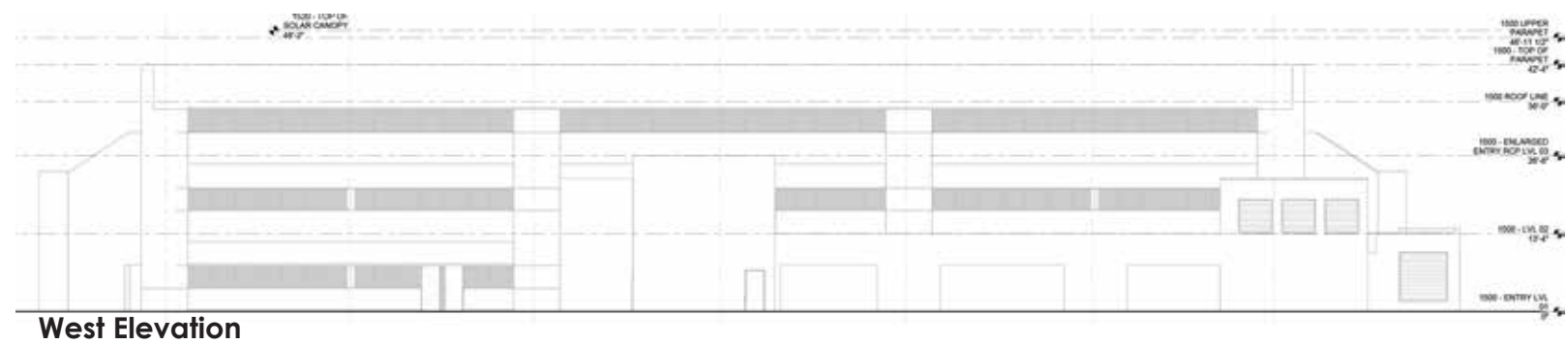
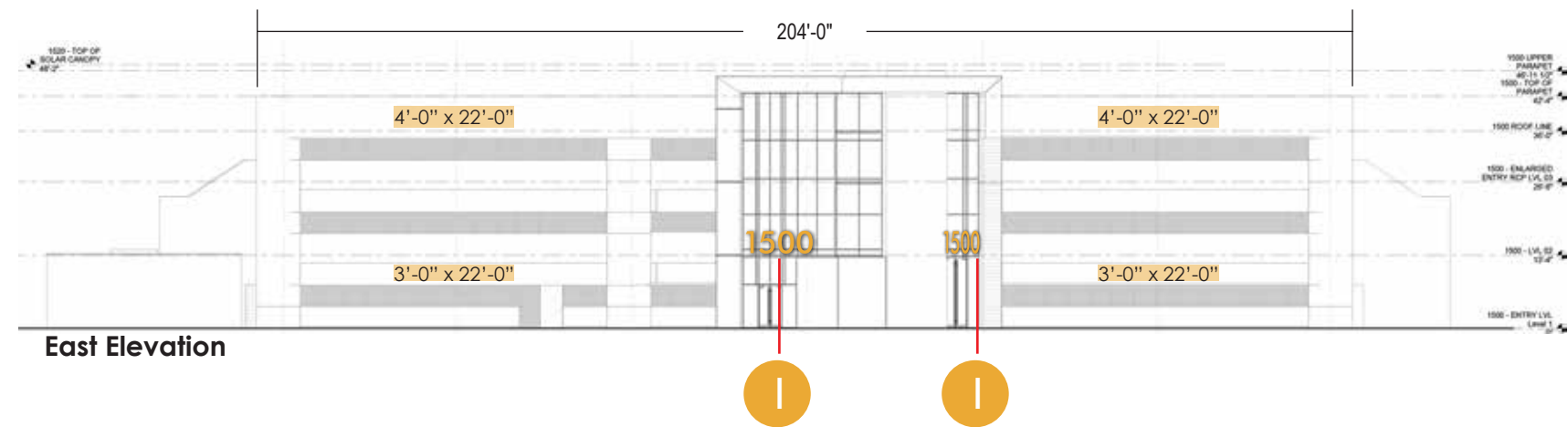
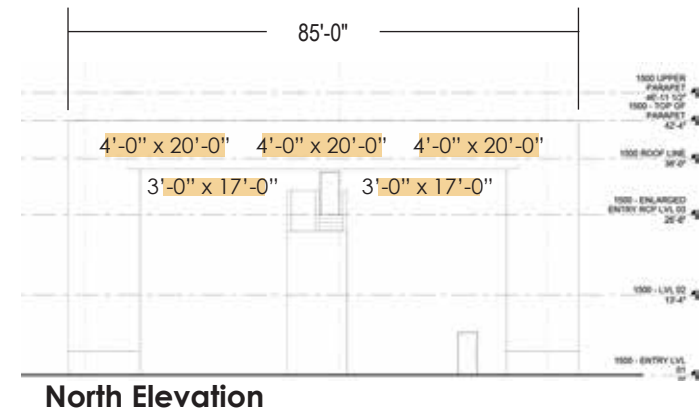
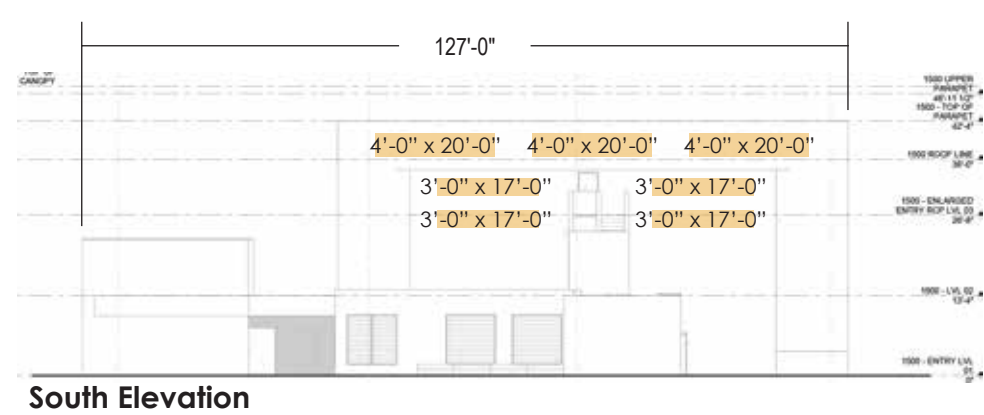
NORTH ELEVATION



SOUTH ELEVATION

# 1500 BUILDING

Scale: 1/32" = 1'-0"  
Sign Band:



1432, 1450, 1500, 1520 South Dobson Road Mesa, Arizona 85202

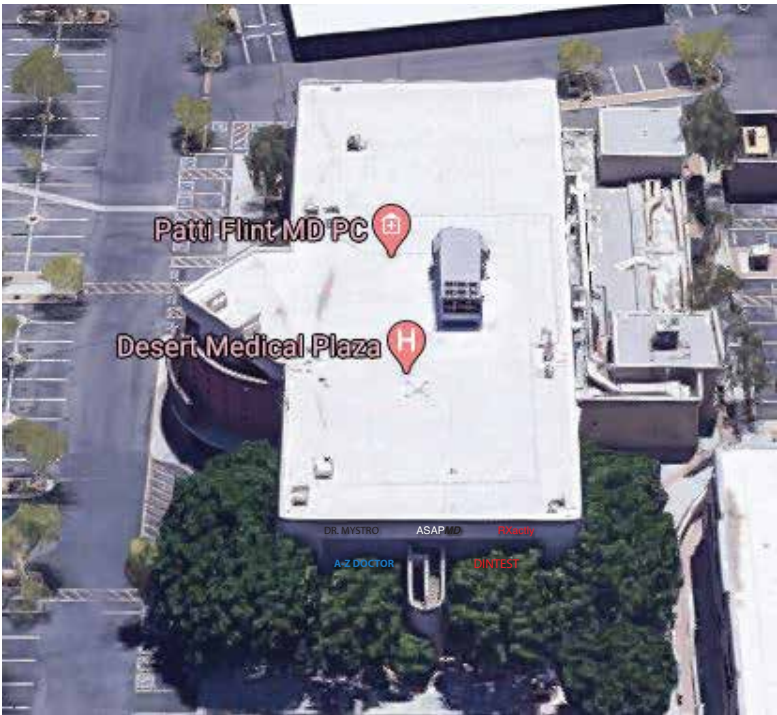


# 1500 BUILDING CONCEPTUAL SIGNAGE

Scale: NTS



EAST ELEVATION



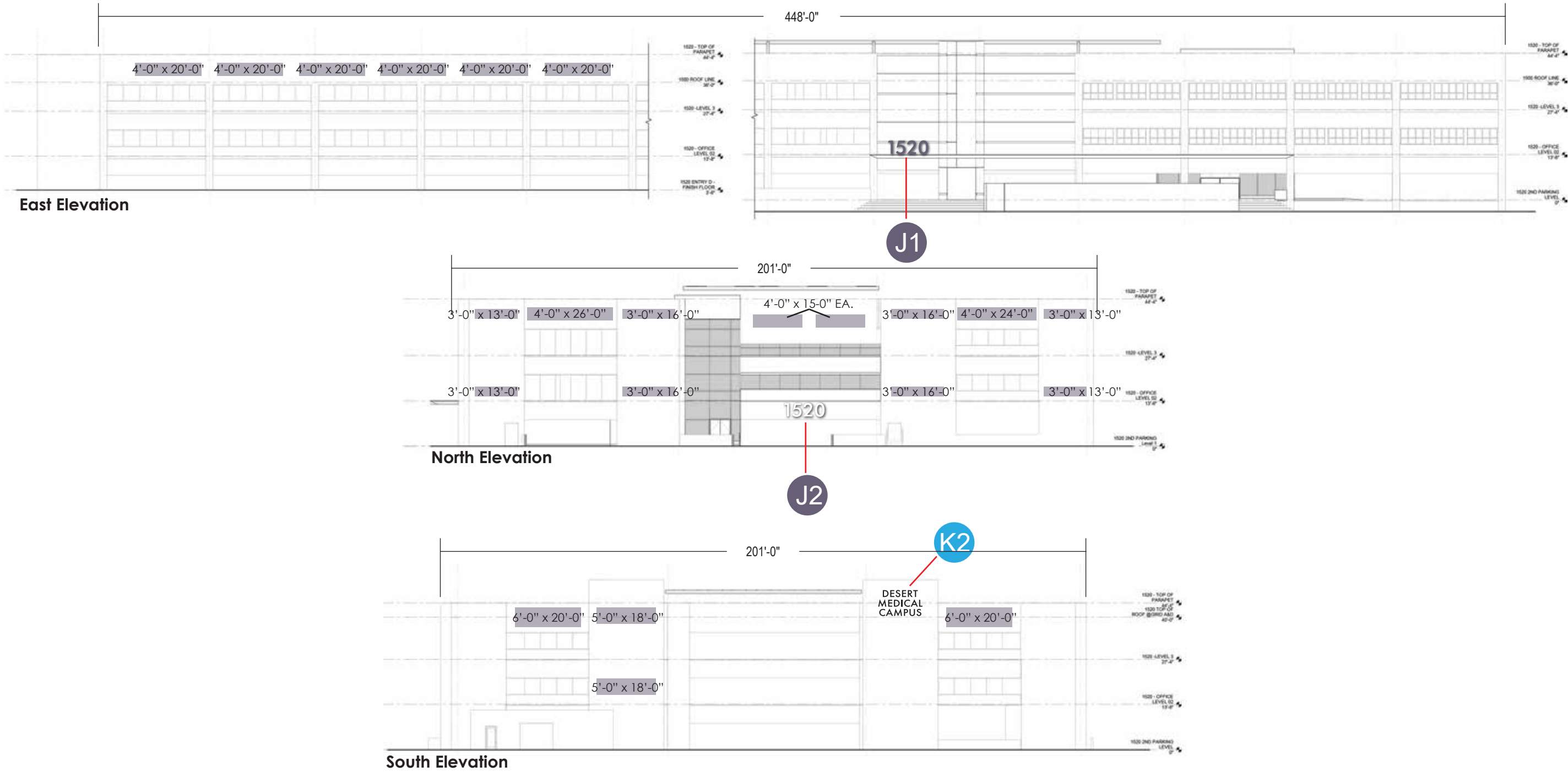
NORTH ELEVATION



SOUTH ELEVATION

# 1520 BUILDING

Scale: 1/32" = 1'-0"  
Sign Band:





# 1520 BUILDING CONCEPTUAL SIGNAGE

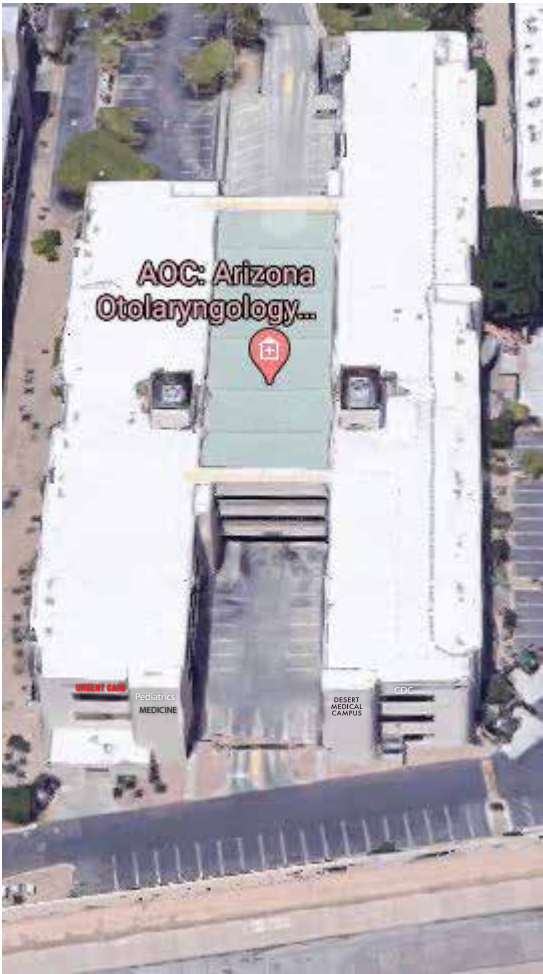
Scale: NTS



EAST ELEVATION



NORTH ELEVATION

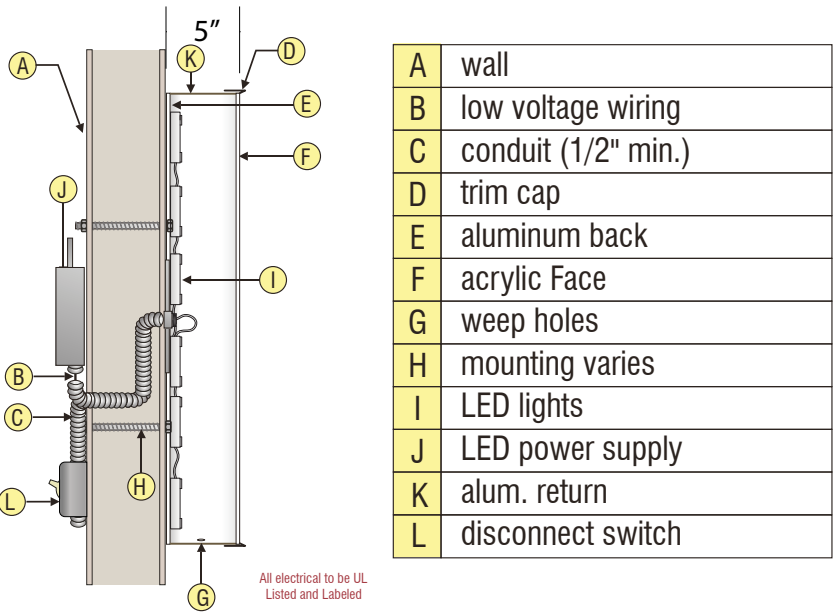


SOUTH ELEVATION

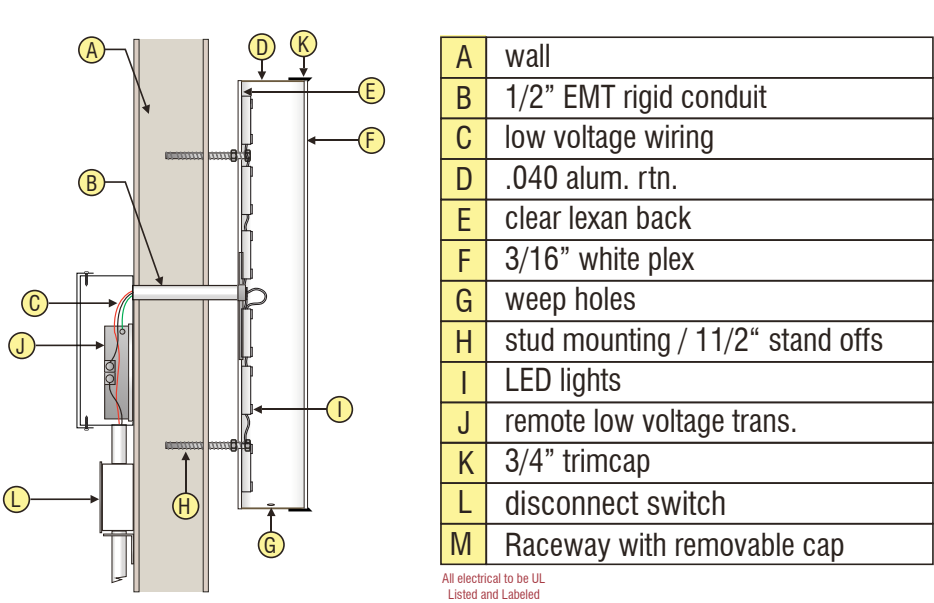
1432, 1450, 1500, 1520 South Dobson Road Mesa, Arizona 85202

# TYPICAL WALL SIGN SECTIONS

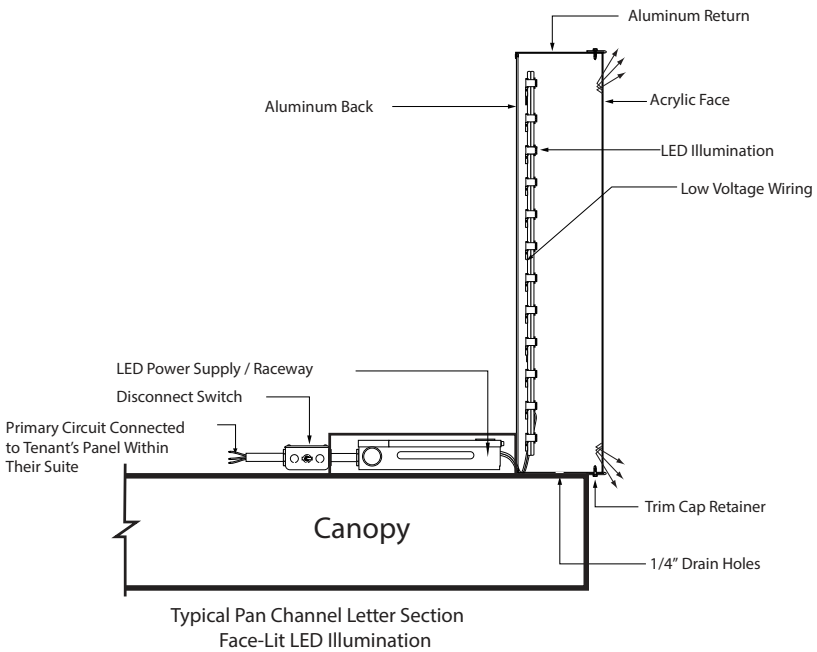
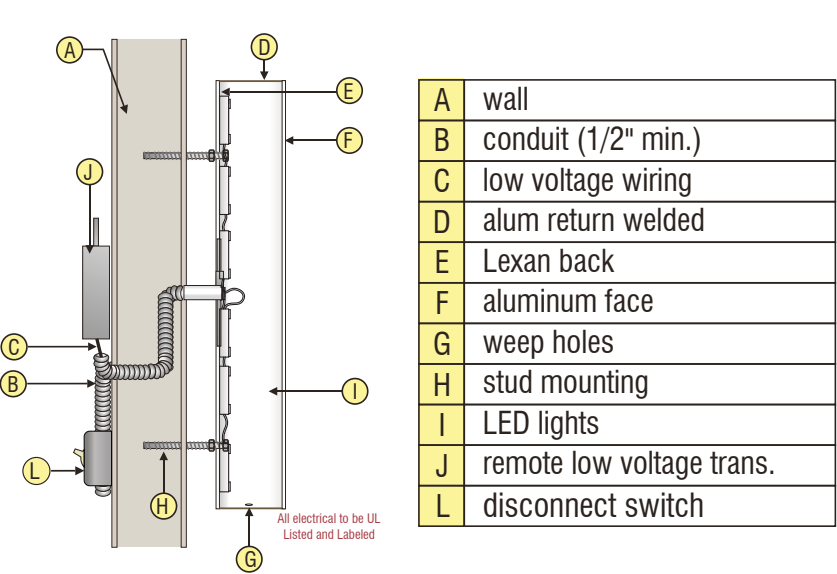
PC Letter / LEDs - Cross Section Detail



Face & Halo Lit Letters / LEDs - Cross Section Detail



RPC Letter / LEDs - Cross Section Detail

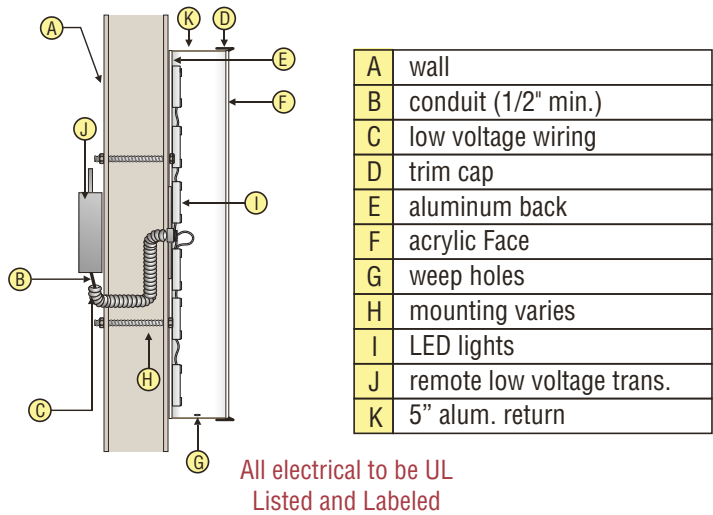




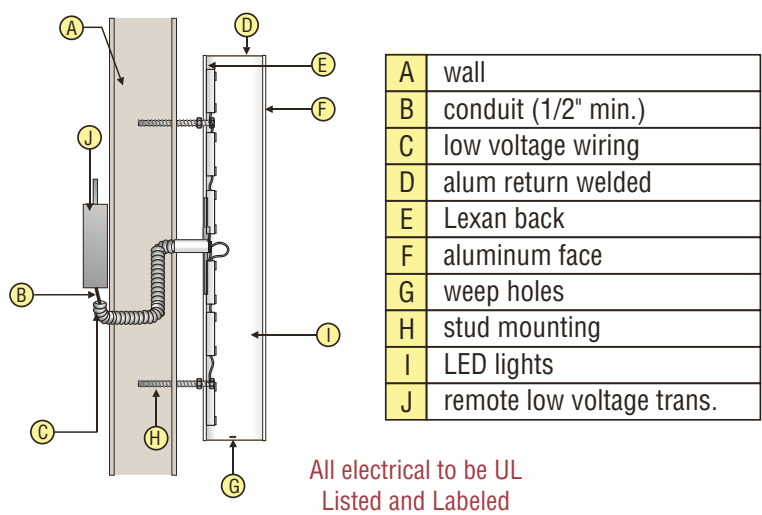
# BUILDING SIGN EXAMPLES



Pan-Channel Letter / LEDs



Reverse Pan-Channel Letter / LEDs



Face & Halo Lit Letters / LEDs - Cross Section Detail

