



# DESIGN REVIEW BOARD

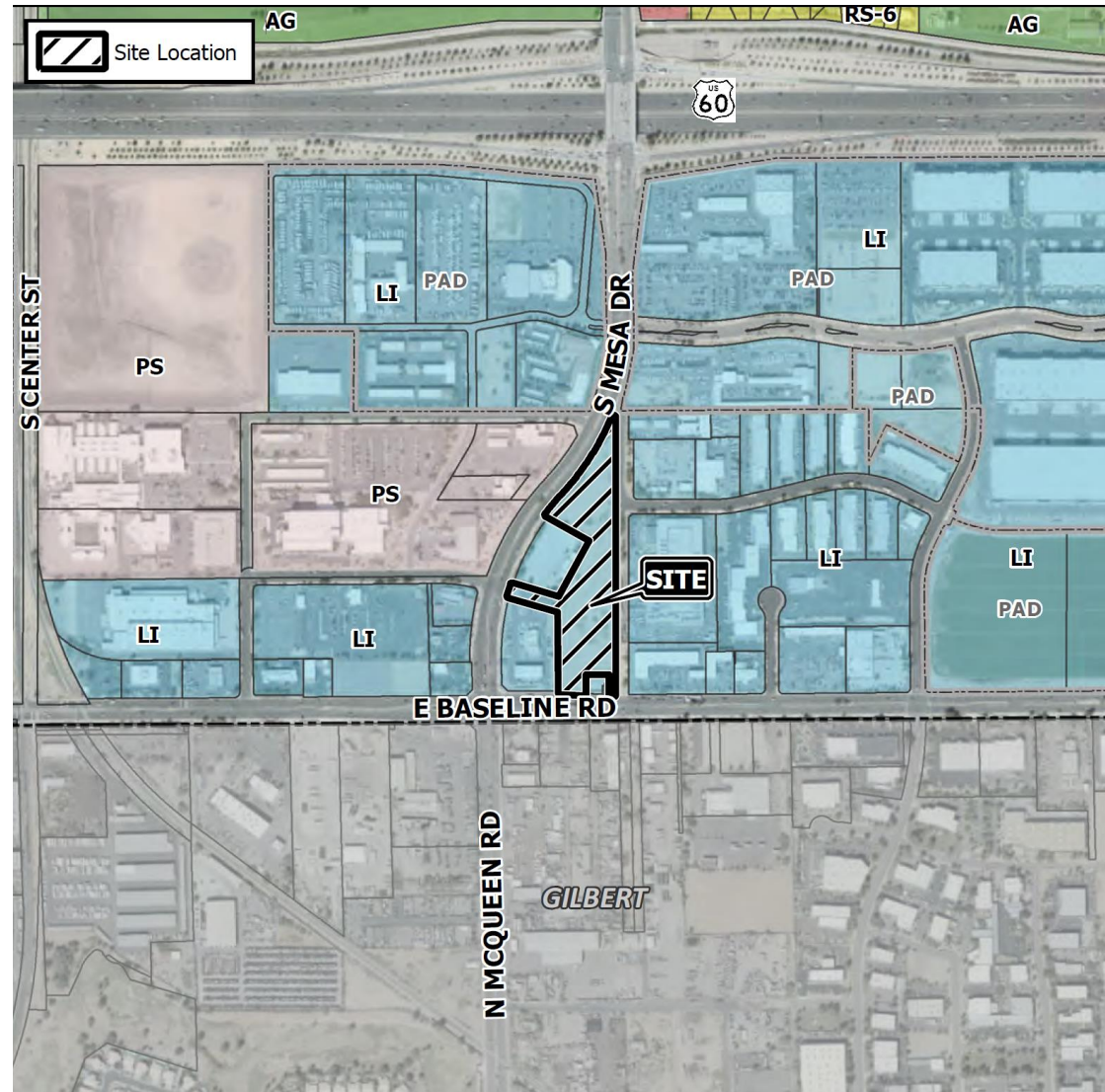
November 10, 2020



**DRB20-00489**

# Location

- East of Mesa Drive on the north side of Baseline Road





# Request

- Design Review

# Purpose

- Proposed hotel



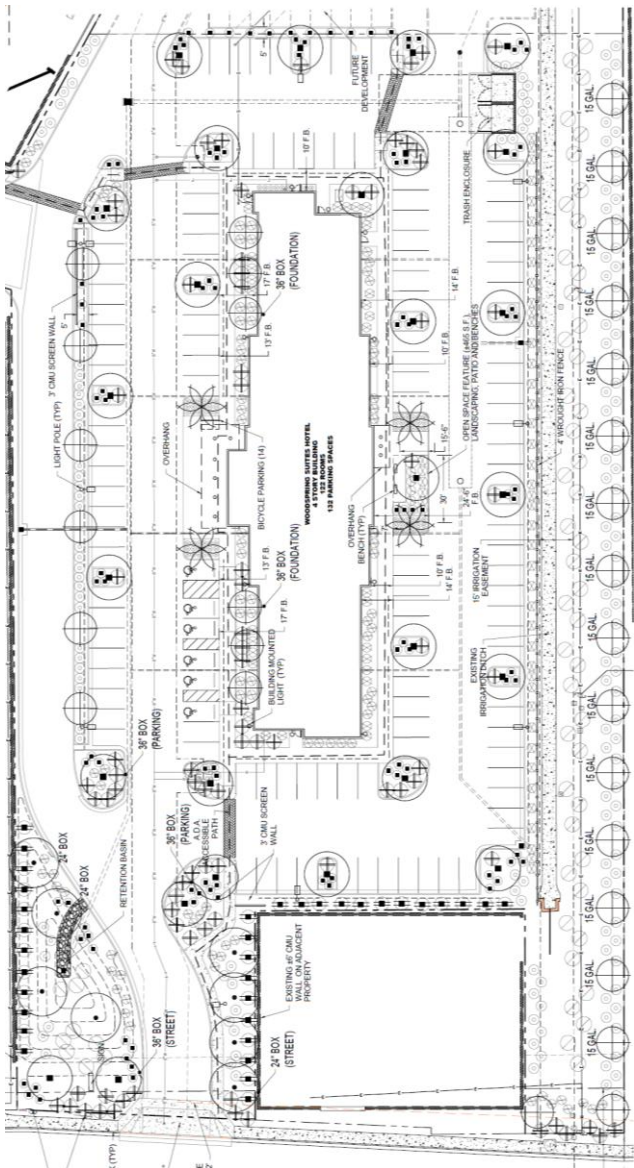
# Street View



Looking north from Baseline Road

- Woodsprings Suites Hotel
- Main entrance facing Mesa Drive
- SRP pump station in southeast corner

# Landscape Plan



## PLANT SCHEDULE

SYMBOL	BOTANICAL/COMMON NAME	SIZE	QTY.	REMARKS
TREES				
	ACACIA ANEURA	15 GALLON	15	STAKE AS REQUIRED
	MULGA	24" BOX	11	
		36" BOX	2	
	PARKINSONIA FLORIDUM	24" BOX	24	STAKE AS REQUIRED
	BLUE PALO VERDE	36" BOX	3	
	PHOENIX DACTYLIFERA	25' CLEAR TRUNK	4	-
	PROSOPIS CHILENSIS 'THORNLESS'	15 GAL.	5	STAKE AS REQUIRED
	THORNLESS CHILEAN MESQUITE	24" BOX	3	
SHRUBS				
	ACACIA REDOLENS 'DESERT CARPET'	1 GAL.	56	1 GPH EMITTER
	N.C.N.			
	EREMOPHILA HYDROPHANA 'BLUE BELLS'	5 GAL.	109	1 GPH EMITTER
	BLUE BELLS EMU			
	LEUCOPHYLLUM LANGMANIAE 'RIO BRAVO'	5 GAL.	154	1 GPH EMITTER
	RIO BRAVO SAGE			
	RUELLIA PENINSULARIS	5 GAL.	78	1 GPH EMITTER
	BAJA RUELLIA			
	TECOMA SPP. 'ORANGE JUBILEE'	5 GAL.	34	1 GPH EMITTER
ACCENTS				
	MUHLENBERGIA CAPILARIS 'REGAL MIST'	5 GAL.	4	1 GPH EMITTER
	REGAL MIST DEER GRASS			
	HESPERALOE PARVIFLORA	5 GAL.	95	1 GPH EMITTER
	RED YUCCA			
	HESPERALOE PARVIFLORA 'BRAKELIGHTS'	3 GAL.	80	1 GPH EMITTER
	BRAKELIGHTS YUCCA			
GROUND COVER				
	EREMOPHILA GLABRA 'MINGENOW GOLD'	1 GAL.	89	1 GPH EMITTER
	OUTBACK SUNRISE EMU			
	DECOMPOSED GRANITE 'MADISON GOLD'	1/2" SCREENED		2" DEPTH ALL LANDSCAPE AREAS

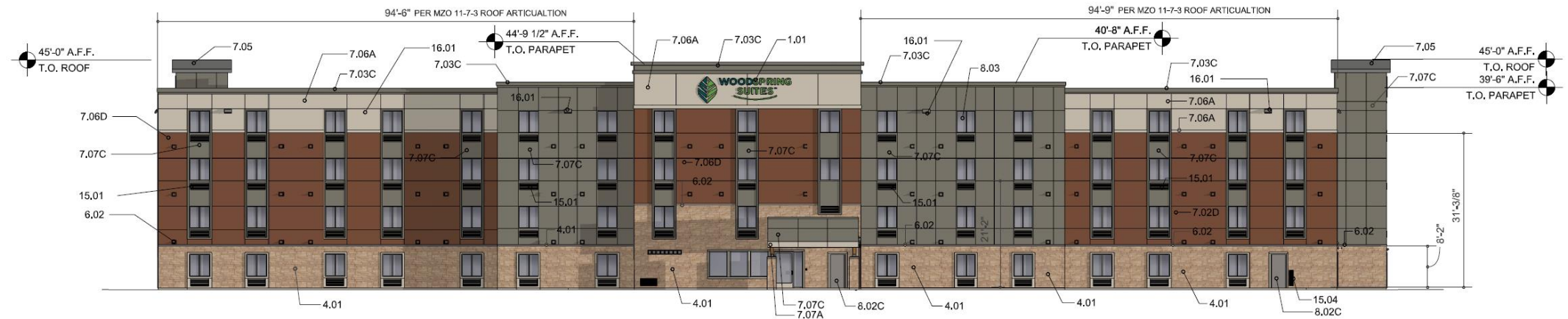


# Elevations



**WEST ELEVATION**

SCALE: 3/32" = 1'-0"

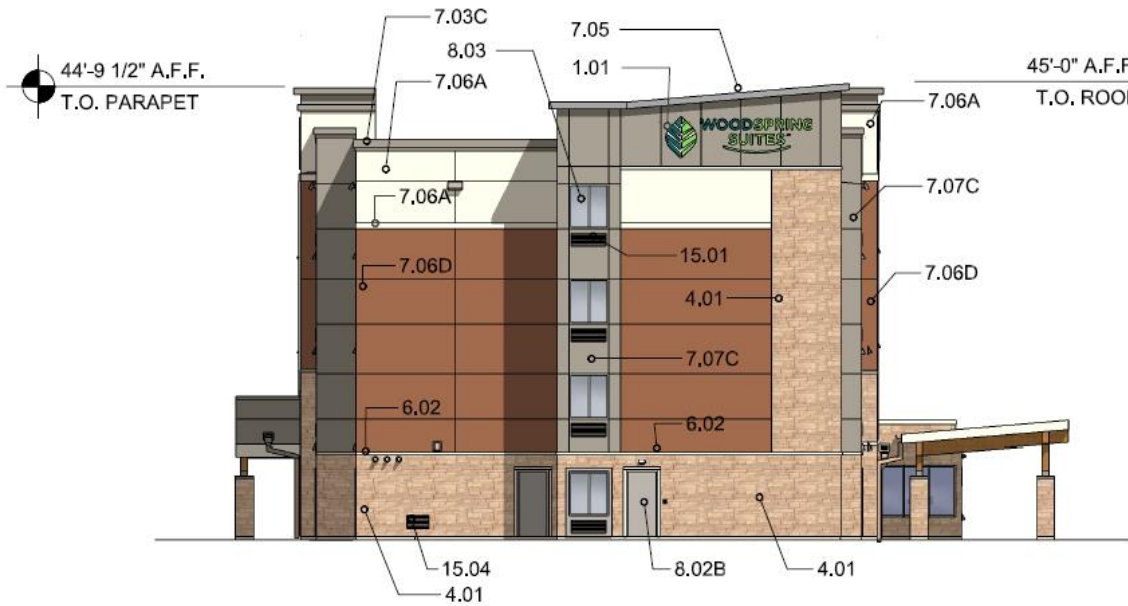


**EAST ELEVATION**

SCALE: 3/32" = 1'-0"



# Elevations



STONE VENEER AREA = 595 SF = 30%  
 STUCCO (A&C) AREA = 1000 SF = 49%  
 FIBER CEMENT BOARD (D) AREA = 336 SF = 17%  
 GLASS AREA = 72 SF = 4%  
 TOTAL NORTH FACADE AREA = 2003 SF

## NORTH ELEVATION

SCALE: 3/32" = 1'-0"  
 PER MZO 11-7-3 NO MORE THAN 50% OF THE TOTAL FACADE IS COVERED BY ONE SINGLE MATERIAL

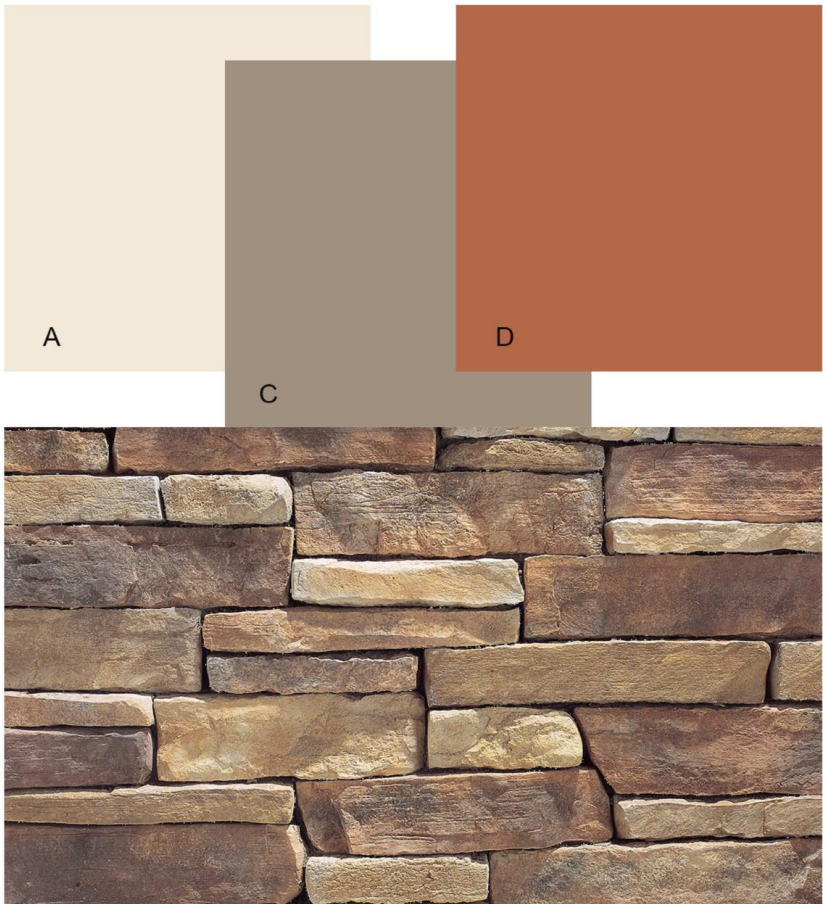


STONE VENEER AREA = 595 SF = 30%  
 STUCCO (A&C) AREA = 865 SF = 43%  
 FIBER CEMENT BOARD = 468 SF = 23%  
 GLASS AREA = 72 SF = 4%  
 TOTAL SOUTH FACADE AREA = 2000 SF

## SOUTH ELEVATION

SCALE: 3/32" = 1'-0"  
 PER MZO 11-7-3 NO MORE THAN 50% OF THE TOTAL FACADE IS COVERED BY ONE SINGLE MATERIAL

# Color and Material Board



ELDORADO STONE - MOUNTAIN LEDGE - YUKON

COLOR SCHEDULE	
A	COLOR: "MEDICHI IVORY " SW#7558
B	NOT USED
C	COLOR: "MOTH WING" SW#9174
D	COLOR: "REYNARD" SW#6348
4.01	MANUFACTURED STONE VENEER: ELDORADO STONE - MOUNTAIN LEDGE - YUKON



# Design Guidelines

## Section 11-7-3

- |   |   |
|---|---|
| ✓ | Design incorporates multiple materials  |
| ✓ | Varied building height  |
| ✓ | No more than fifty percent (50%) of the total façade covered with one (1) single material |



# Summary

## Findings

- ✓ Staff has no major concerns
- ✓ Project meets MZO requirements
- ✓ Staff welcomes any feedback



# DESIGN REVIEW BOARD

November 10, 2020