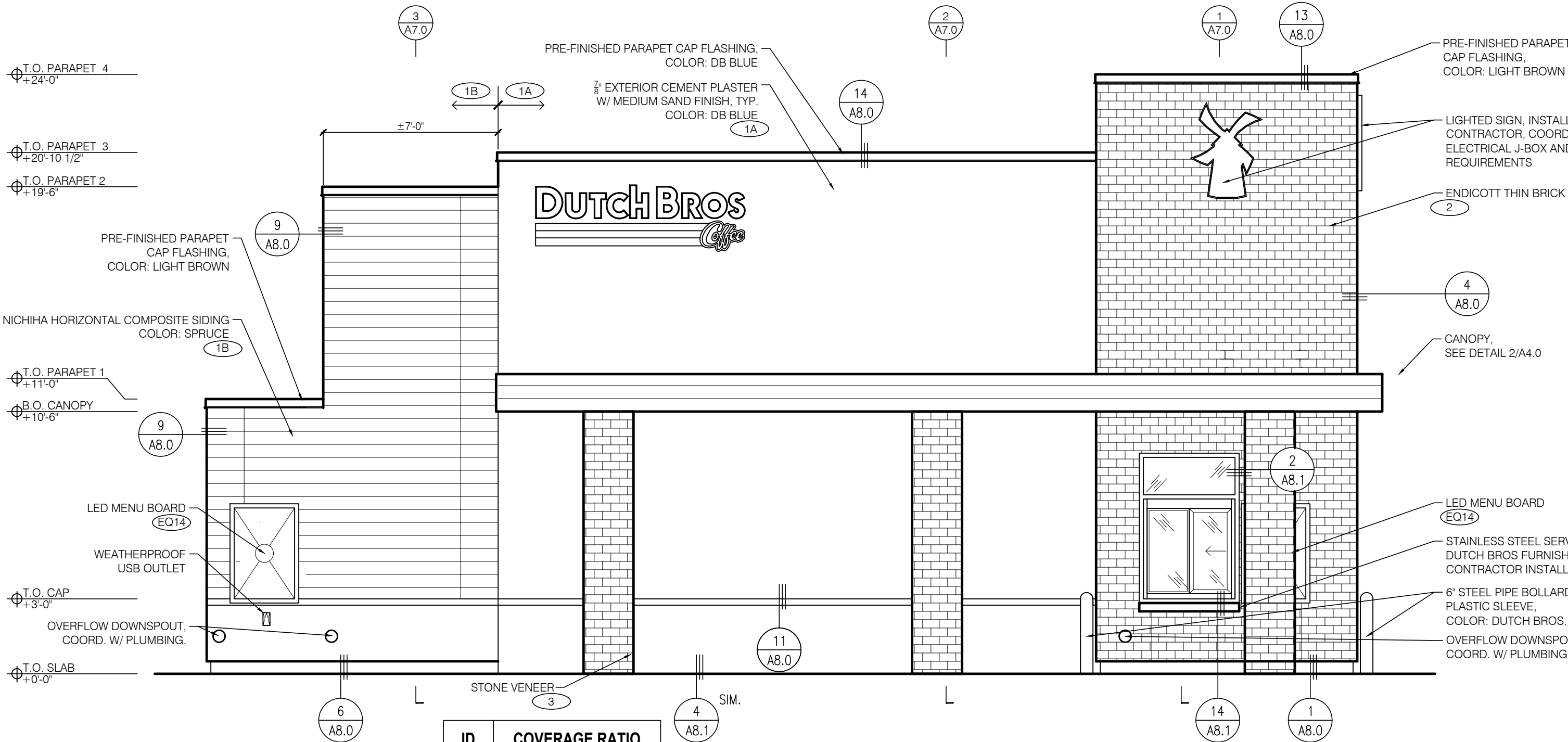
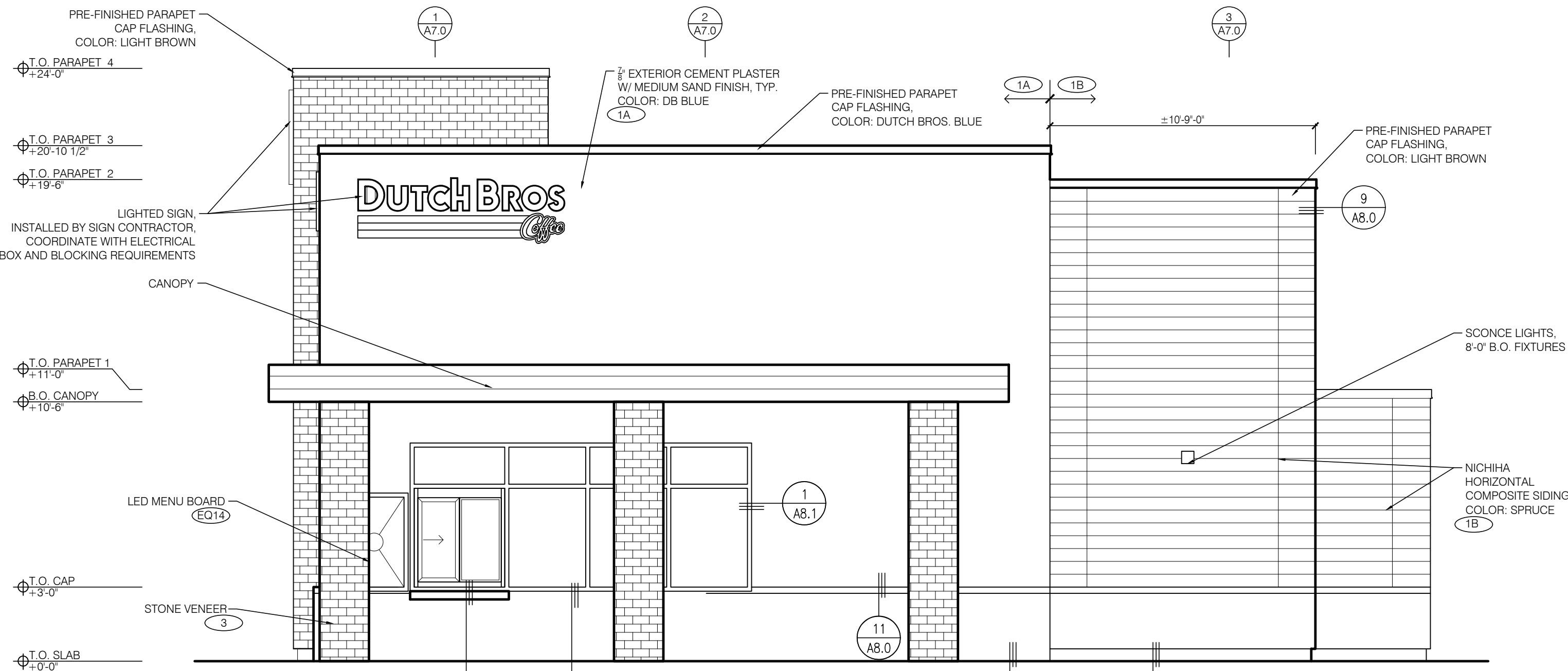


"The name DUTCH BROS. and all associated logos, distinctive designs, content, information, and other materials featured, displayed, contained herein, and made available by Dutch Bros., including but not limited to, the "look and feel" of the establishments and products, all text, images, colors, configurations, and materials, whether in writing, illustration, photography, or otherwise, are owned by and/or licensed by DB Franchising USA, LLC and are protected by copyright, trademark, trade dress, patent, and/or other intellectual property rights and unfair competition laws under the United States and foreign laws."

THE USE OF THESE PLANS AND SPECIFICATIONS SHALL BE RESTRICTED TO THE ORIGINAL SITE FOR WHICH THEY WERE PREPARED AND PUBLICATION THEREOF IS EXPRESSLY LIMITED TO SUCH USE. RE-USE, REPRODUCTION OR PUBLICATION BY ANY METHOD, IN WHOLE OR IN PART, IS PROHIBITED. TITLE TO THE PLANS AND SPECIFICATIONS REMAINS WITH THE ARCHITECT WITHOUT PREJUDICE. VISUAL CONTACT WITH THESE PLANS AND SPECIFICATIONS SHALL CONSTITUTE PRIMA FACIE EVIDENCE OF THE ACCEPTANCE OF THE RESTRICTIONS.

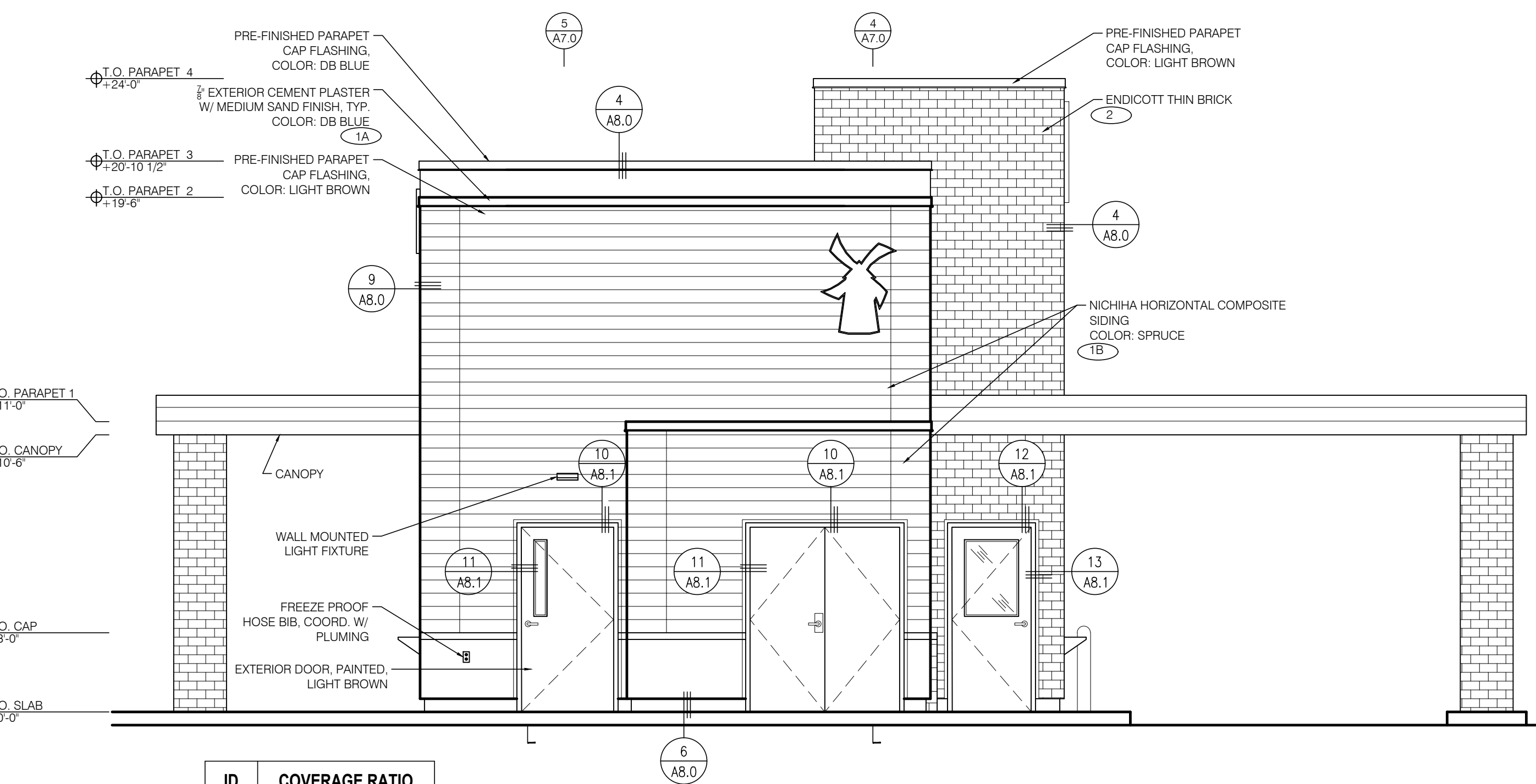


4 NORTH ELEVATION - DRIVE-THRU WINDOW
SCALE: 1/4" = 1'-0"

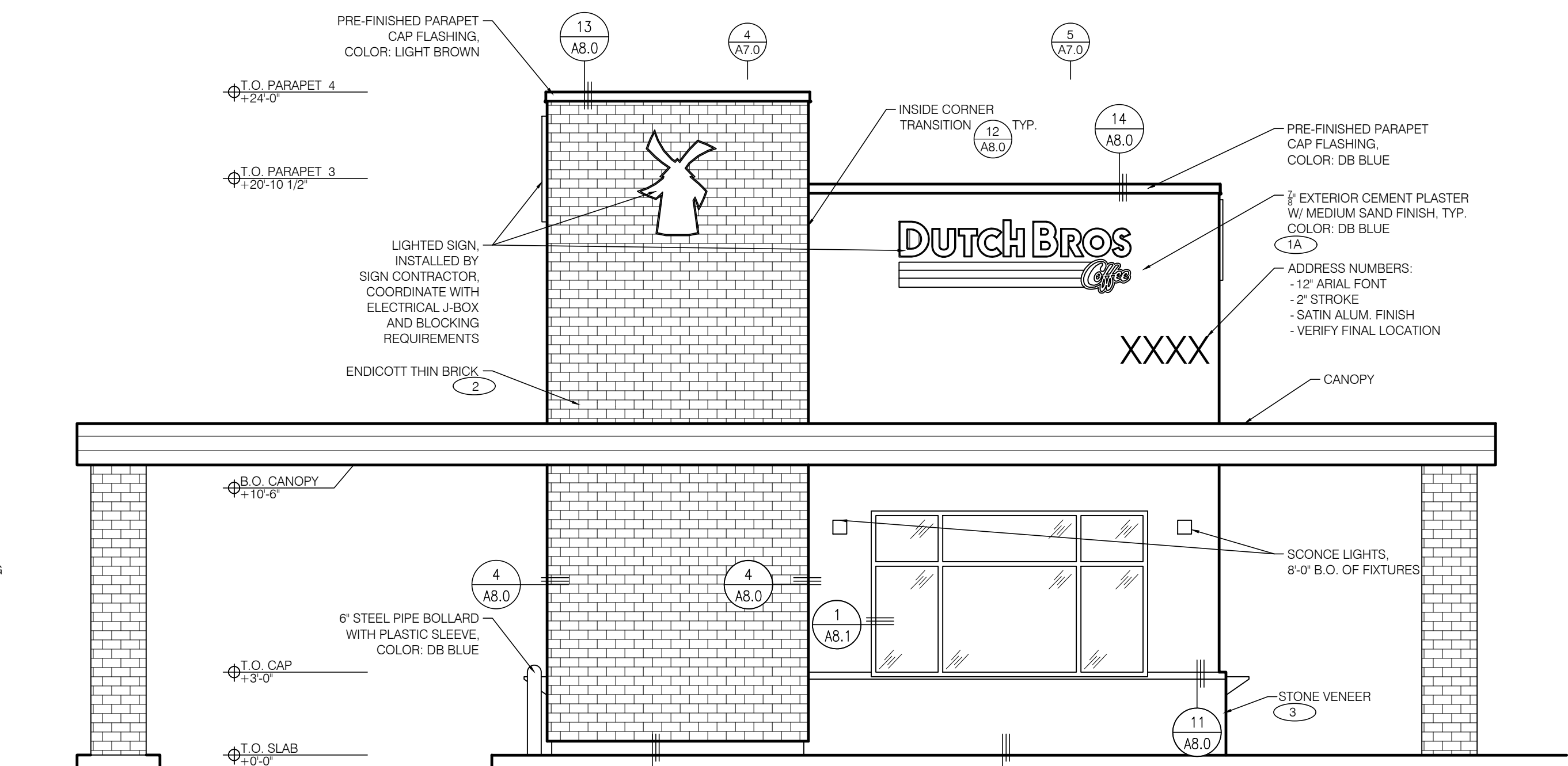


2 SOUTH ELEVATION - WALK-UP WINDOW
SCALE: 1/4" = 1'-0"

EXTERIOR FINISH SCHEDULE				
ID TAG	MATERIAL	MANUFACTURER	MODEL	REMARKS
ZONE 1 (BODY) COLOR: DB BLUE OR SIDING				
1A	EXTERIOR CEMENT PLASTER	SHERWIN WILLIAMS	GP-0624	DB BLUE; MEDIUM SAND/CEMENT PLASTER
1B	FIBER CEMENT HORIZONTAL SIDING	NICHIHA	VINTAGE WOOD - SPRUCE	ORIENTATION: HORIZONTAL
ZONE 2 (TOWER) (Z2) COLOR: EXECUTIVE IRONSPOT				
2	THIN BRICK	ENDICOTT	EXECUTIVE IRONSPOT; VELVETEX TEXTURE; 1/2" x 3-5/8" x 7-5/8"	ORIENTATION: HORIZONTAL; GROUT COLOR TO MATCH #10 ANTIQUE WHITE BY POLYBLEND GROUT
ZONE 3 (8'-10" BASE) (Z3) COLOR: LATANA				
3	STONE VENEER	ELDORADO STONE	CLIFFSTONE, LATANA	SNAPPED EDGE WAINSCOT SILL COLOR: SAND



3 EAST ELEVATION - REAR
SCALE: 1/4" = 1'-0"



1 WEST ELEVATION - FRONT
SCALE: 1/4" = 1'-0"



1330 OLYMPIC BLVD.
SANTA MONICA, CALIFORNIA 90404
PH 310 452-5553 FAX 310 450-4742



NOTICE OF EXTENDED CERTIFICATION AND APPROVAL PERIOD PROVISION:
THE CONSTRUCTION AGREEMENT ALLOWS THE OWNER TO CERTIFY AND APPROVE BILLINGS AND ESTIMATES FOR PROGRESS PAYMENTS WITHIN 30 DAYS AFTER THE BILLINGS AND ESTIMATES ARE RECEIVED FROM THE CONTRACTOR. FOR RELEASE OF RETENTION WITHIN 30 DAYS AFTER THE BILLINGS AND ESTIMATES ARE RECEIVED FROM THE CONTRACTOR AND FOR FINAL PAYMENT WITHIN 30 DAYS AFTER THE BILLINGS AND ESTIMATES ARE RECEIVED FROM THE CONTRACTOR.
NOTICE OF EXTENDED PAYMENT PROVISION:
THE CONSTRUCTION AGREEMENT ALLOWS THE OWNER TO MAKE PAYMENT WITHIN 15 DAYS AFTER CERTIFICATION AND APPROVAL OF BILLINGS AND ESTIMATES FOR PROGRESS PAYMENTS, WITHIN 15 DAYS AFTER CERTIFICATION AND APPROVAL OF BILLINGS AND ESTIMATES FOR RELEASE OF RETENTION AND WITHIN 15 DAYS AFTER CERTIFICATION AND APPROVAL OF BILLINGS AND ESTIMATES FOR FINAL PAYMENT.
NOTICE OF ALTERNATE ARRANGEMENTS, FOR RELEASE OF RETENTION AND FINAL PAYMENT:
THE CONSTRUCTION AGREEMENT ALLOWS THE OWNER TO MAKE ALTERNATE ARRANGEMENTS FOR THE OCCURRENCE OF SUBSTANTIAL COMPLETION, THE RELEASE OF RETENTION AND MAKING OF FINAL PAYMENT. SUCH ALTERNATE ARRANGEMENTS ARE DISCLOSED ON SHEET NO. 60.0 OF THESE PLANS.

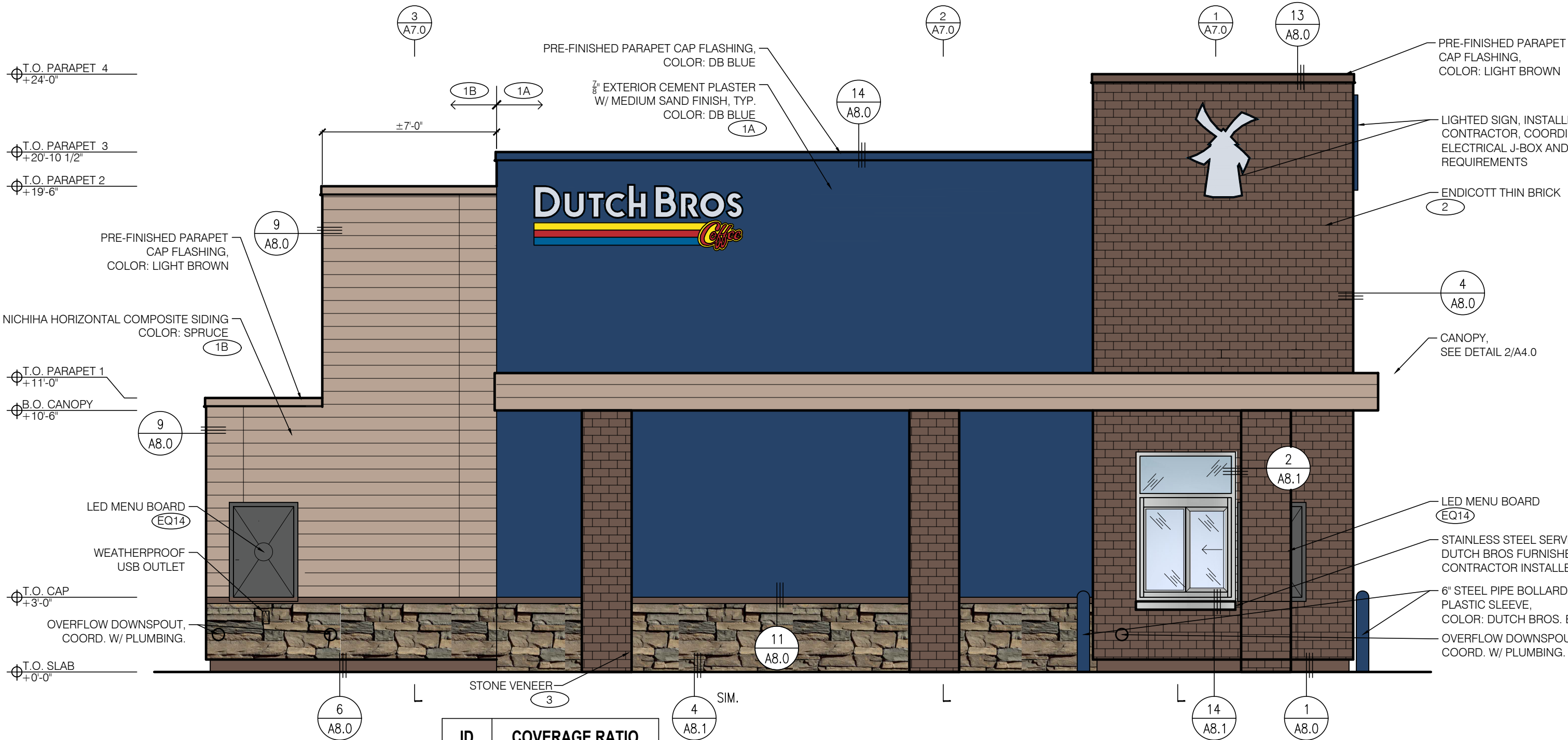
Project No: AZ1404
Dutch Bros Coffee - New Freestanding Store
DB2040-A1 CUSTOM
2709 SOUTH SIGNAL BUTTE RD
MESA, AZ 85209
APN: 304-02-989

DATE: 07/01/20	REV: DATE:	DESCRIPTION:
SHEET NAME:		
BUILDING ELEVATIONS		
SHEET NUMBER:		

A2.0
© 2019 DB Franchising USA, LLC

"The name DUTCH BROS. and all associated logos, distinctive designs, content, information, and other materials featured, displayed, contained herein, and made available by Dutch Bros., including but not limited to, the "look and feel" of the establishments and products, all text, images, colors, configurations, and materials, whether in print or electronic form, are trademarks of Dutch Bros. Franchising, LLC. All other trademarks, trade dress, patent, and/or other intellectual property rights and unfair competition laws under the United States and foreign laws."

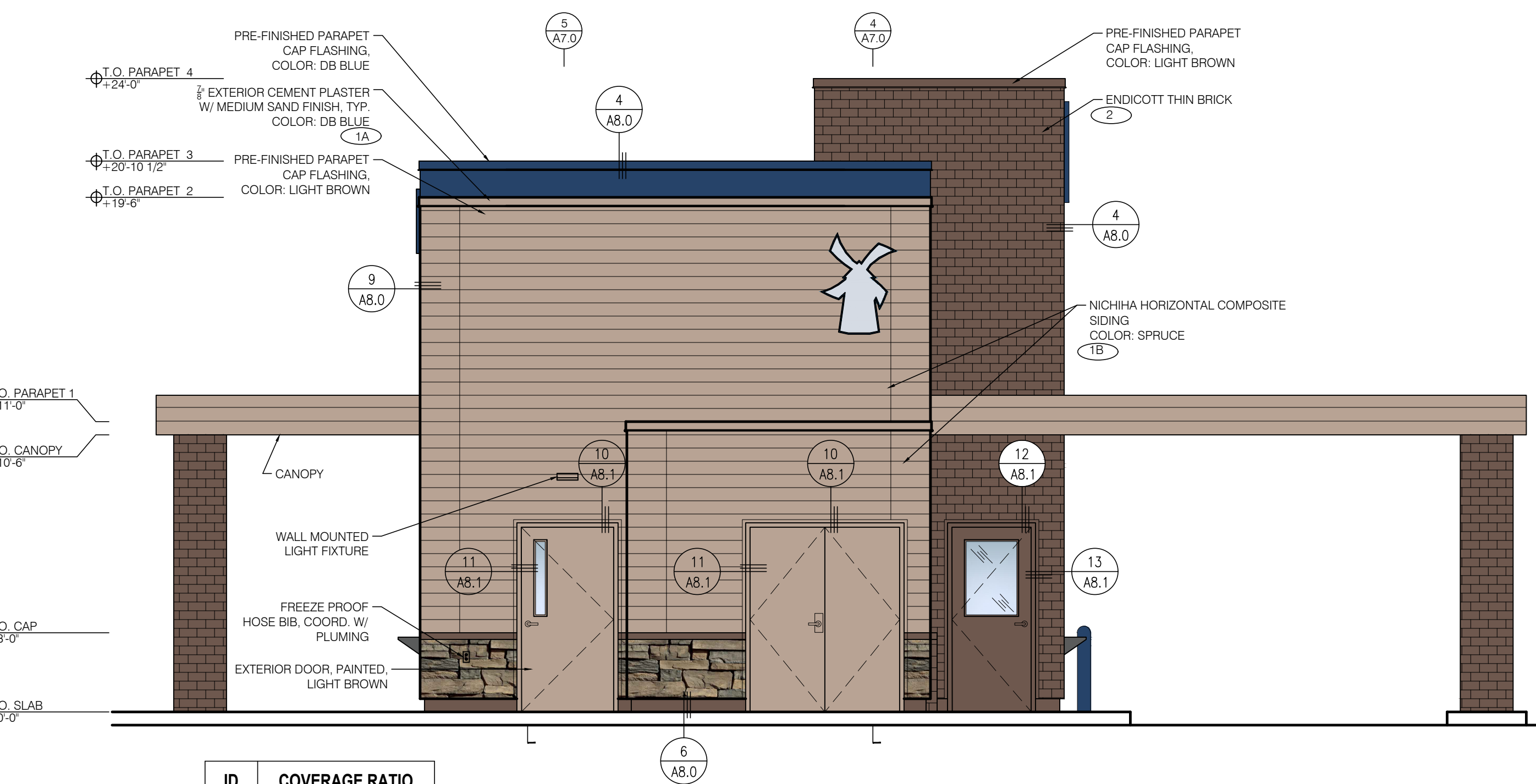
THE USE OF THESE PLANS AND SPECIFICATIONS SHALL BE RESTRICTED TO THE ORIGINAL SITE FOR WHICH THEY WERE PREPARED AND PUBLICATION THEREOF IS EXPRESSLY LIMITED TO SUCH USE. RE-USE, REPRODUCTION OR PUBLICATION BY ANY METHOD, IN WHOLE OR IN PART, IS PROHIBITED. TITLE TO THE PLANS AND SPECIFICATIONS REMAINS WITH THE ARCHITECT WITHOUT PREJUDICE. VISUAL CONTACT WITH THESE PLANS AND SPECIFICATIONS SHALL CONSTITUTE PRIMA FACIE EVIDENCE OF THE ACCEPTANCE OF THE RESTRICTIONS.



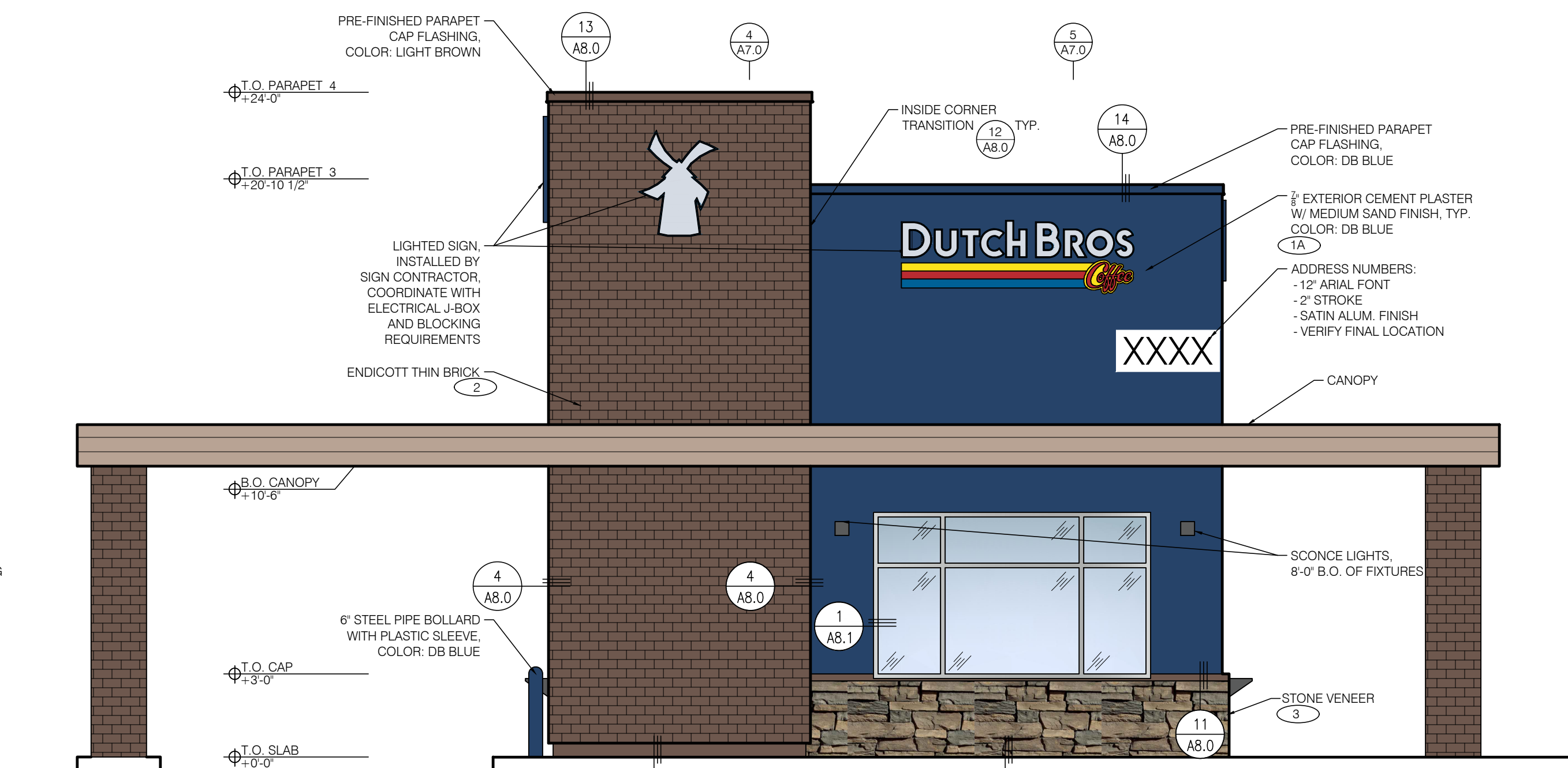
4 NORTH ELEVATION - DRIVE-THRU WINDOW SCALE: 1/4" = 1'-0"



2 SOUTH ELEVATION - WALK-UP WINDOW SCALE: 1/4" = 1'-0"



3 EAST ELEVATION - REAR SCALE: 1/4" = 1'-0"



1 WEST ELEVATION - FRONT SCALE: 1/4" = 1'-0"

EXTERIOR FINISH SCHEDULE				
ID TAG	MATERIAL	MANUFACTURER	MODEL	REMARKS
ZONE 1 (BODY) COLOR: DB BLUE OR SIDING				
1A	EXTERIOR CEMENT PLASTER	SHERWIN WILLIAMS	GP-0624	DB BLUE; MEDIUM SAND/CEMENT PLASTER
1B	FIBER CEMENT HORIZONTAL SIDING	NICHIHA	VINTAGE WOOD - SPRUCE	ORIENTATION: HORIZONTAL
ZONE 2 (TOWER) (Z2) COLOR: EXECUTIVE IRONSPOT				
2	THIN BRICK	ENDICOTT	EXECUTIVE IRONSPOT; VELVETEX TEXTURE; 1/2" x 3-5/8" x 7-5/8"	ORIENTATION: HORIZONTAL; GROUT COLOR TO MATCH #10 ANTIQUE WHITE BY POLYBLEND GROUT
ZONE 3 (8'-10" BASE) (Z3) COLOR: LATANA				
3	STONE VENEER	ELDORADO STONE	CLIFFSTONE, LATANA	SNAPPED EDGE WAINSCOT SILL COLOR: SAND



ARMET DAVIS NEWLOVE & ASSOCIATES, AIA ARCHITECTS

1330 OLYMPIC BLVD.
SANTA MONICA, CALIFORNIA 90404
PH 310 452-5553 FAX 310 450-4742



NOTICE OF EXTENDED CERTIFICATION AND APPROVAL PERIOD PROVISION:
THE CONSTRUCTION AGREEMENT ALLOWS THE OWNER TO CERTIFY AND APPROVE BILLINGS AND ESTIMATES FOR PROGRESS PAYMENTS WITHIN 30 DAYS AFTER THE BILLINGS AND ESTIMATES ARE RECEIVED FROM THE CONTRACTOR, FOR RELEASE OF RETENTION WITHIN 30 DAYS AFTER THE BILLINGS AND ESTIMATES ARE RECEIVED FROM THE CONTRACTOR AND FOR FINAL PAYMENT WITHIN 30 DAYS AFTER THE BILLINGS AND ESTIMATES ARE RECEIVED FROM THE CONTRACTOR.
NOTICE OF EXTENDED PAYMENT PROVISION:
THE CONSTRUCTION AGREEMENT ALLOWS THE OWNER TO MAKE PAYMENT WITHIN 15 DAYS AFTER CERTIFICATION AND APPROVAL OF BILLINGS AND ESTIMATES FOR PROGRESS PAYMENTS, WITHIN 15 DAYS AFTER CERTIFICATION AND APPROVAL OF BILLINGS AND ESTIMATES FOR RELEASE OF RETENTION AND WITHIN 15 DAYS AFTER CERTIFICATION AND APPROVAL OF BILLINGS AND ESTIMATES FOR FINAL PAYMENT.
NOTICE OF ALTERNATE ARRANGEMENTS, FOR RELEASE OF RETENTION AND FINAL PAYMENT:
THE CONSTRUCTION AGREEMENT ALLOWS THE OWNER TO MAKE ALTERNATE ARRANGEMENTS FOR THE OCCURRENCE OF SUBSTANTIAL COMPLETION, THE RELEASE OF RETENTION AND MAKING OF FINAL PAYMENT. SUCH ALTERNATE ARRANGEMENTS ARE DISCLOSED ON SHEET NO. 6.0 OF THESE PLANS.

Project No: AZ1404
Dutch Bros Coffee - New Freestanding Store
DB2040-A1 CUSTOM
2709 SOUTH SIGNAL BUTTE RD
MESA, AZ 85209
APN: 304-02-989

DATE: 07/01/20
REV: DATE DESCRIPTION:

SHEET NAME:

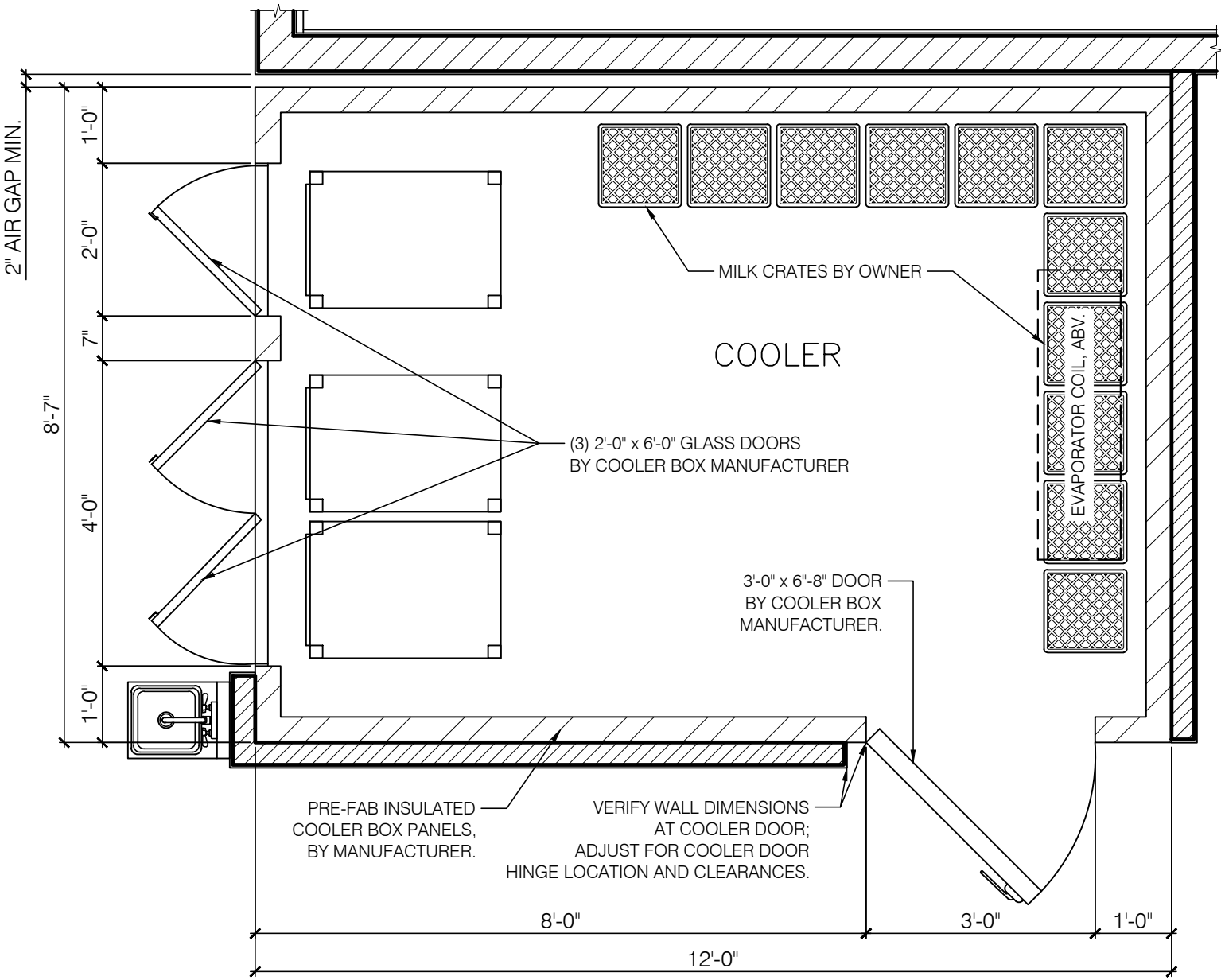
BUILDING ELEVATIONS

SHEET NUMBER:

A2.1

© 2019 DB Franchising USA, LLC

"The name DUTCH BROS. and all associated logos, distinctive designs, content, information, and other materials featured, displayed, contained herein, and made available by Dutch Bros., including but not limited to, the "look and feel" of the establishments and products, all text, images, colors, configurations, designs, logos, designs, illustrations, photographs, and pictures" collectively, the "Materials") are owned by and/or licensed by DB Franchising USA, LLC and are protected by copyright, trademark, trade dress, patent, and/or other intellectual property rights and unfair competition laws under the United States and foreign laws."



2 ENLARGED COOLER PLAN

SCALE: 1/2" = 1'-0"

