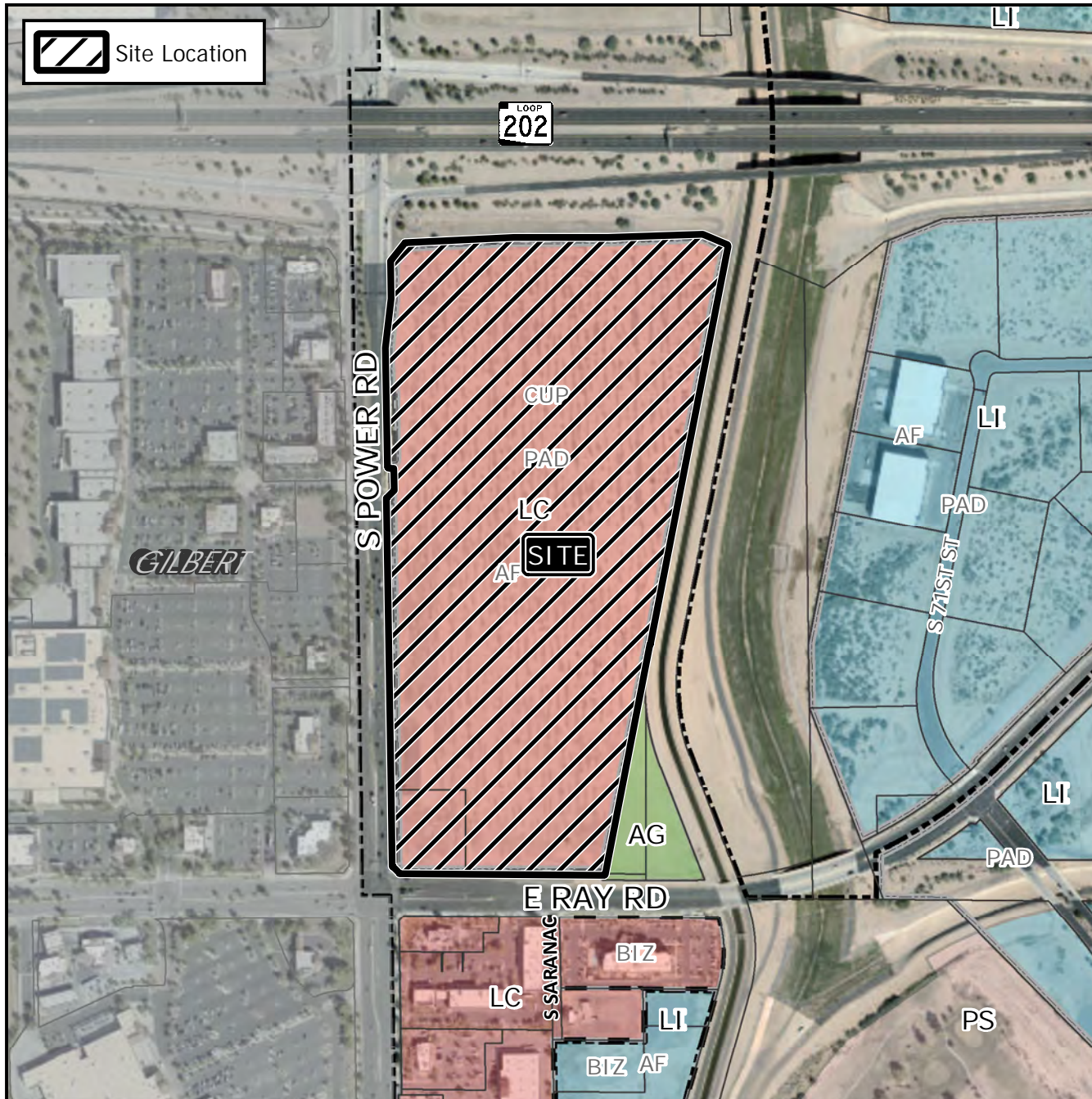


Board of Adjustment Vicinity Map: BOA20-00484

Case Details



Case:

BOA20-00484

Site / Address:

District 6. Within the 4800 to 5200 blocks of South Power Road (east side) and the 6800 to 7000 blocks of East Ray Road (north side)

Request:

Requesting a Special Use Permit (SUP) to allow a Comprehensive Sign Plan (CSP) for a mixed-use development in the LC-PAD district.

