



# **Update on Reopening of Arizona Museum of Natural History & i.d.e.a. Museum**



# OUTLINE

- Activity Update
- Phase 1 Reopening Plan
  - Health and Safety Protocols
  - Logistics
  - Exhibitions/Programs at Opening
- Future Programming this Fiscal Year

# What's Been Happening During Closure?

- Identifying and processing RIWFs
- Supporting Mesa CARES
- Planning and designing for a new reality
- Gearing up for virtual program production
- Online Engagement of the public & key stakeholders
- Installation of new and revamped exhibitions
- Facility and Interactive changes to meet safety protocols
- Pursuing grants and donations



# Activity Update – AZ Museum of Natural History

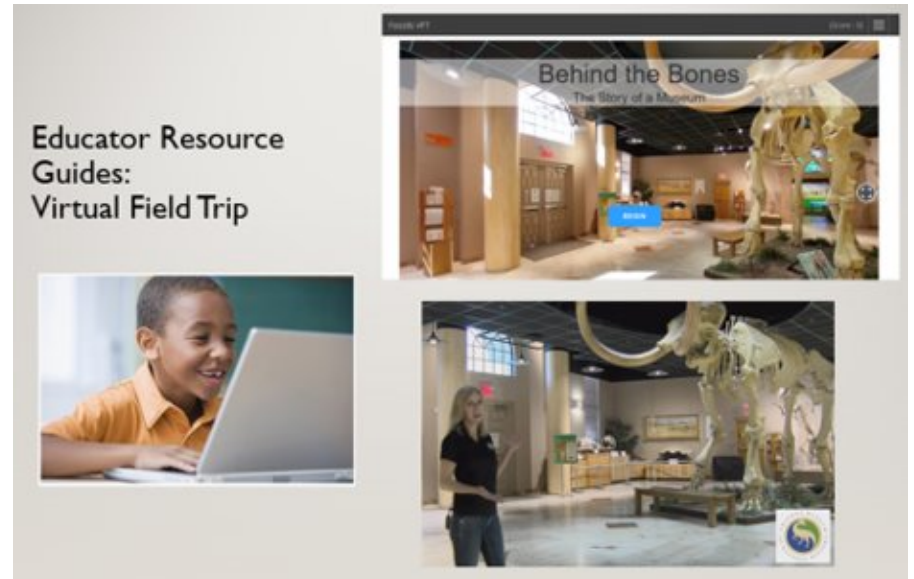
## Social Media Engagement

- Meet the Scientist videos
- Ucurate! Series
- Fossil Fridays
- Geology Field Trips
- Weekend Wonder family activities



## Online Programs

- 8-week Natural History course
- Monthly Paleontology lecture
- Quarterly volunteer meeting/lecture
- Dinosaur Detectives program
- Pocket full of Podcasts
- Virtual fields trips for Schools



# Activity Update - i.d.e.a. Museum

## iArt Online Family Offerings

- Early Learning—pre-K skill building
- Imagination—writing and pretend play
- Design/build activities
- Experience—reading, acting and other activities
- Art—hands-on art projects
- Virtual Girl Scout Workshops

## Educator Resources

- Using curriculum created for *Art of the Story* exhibit, supports reading curriculum for K-3
- Home School Lab—virtual now (later, in person)—providing resources and support for home-schoolers



i.d.e.a. Museum  
200 followers

Following

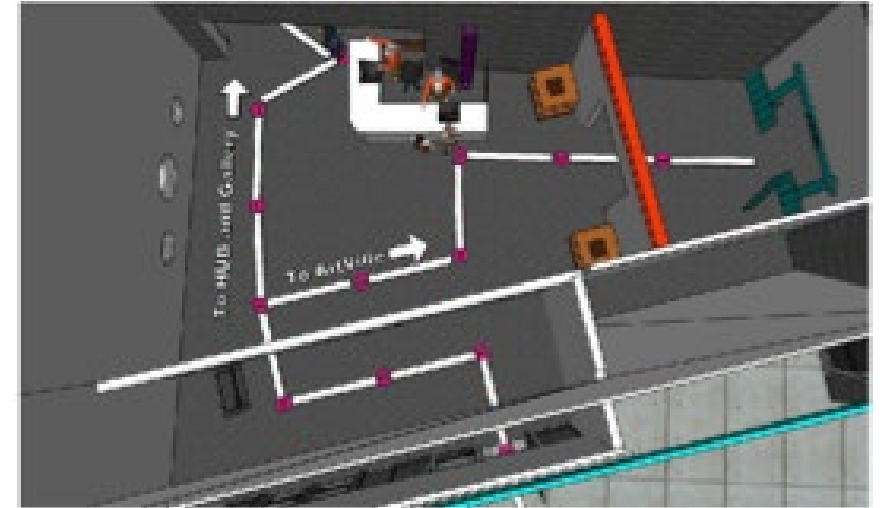
## DIY Musical Instruments

Explore the art of rhythmic expression with these 3 simple and fun musical instruments! All you need are... [More](#)

# Reopening i.d.e.a. Museum and AZMNH: Health and Safety Protocols

## Safety Protocols:

- Mask requirement for staff and public
- Temperature checks - Visitors and Staff
- Online timed ticketing
- Reduced capacity
- Replaced hands-on activities with low-touch or no-touch activities
- Established one-way directional flow
- Installed plexiglass shields at front desks
- Increased cleaning schedule
- Hand sanitizer stations



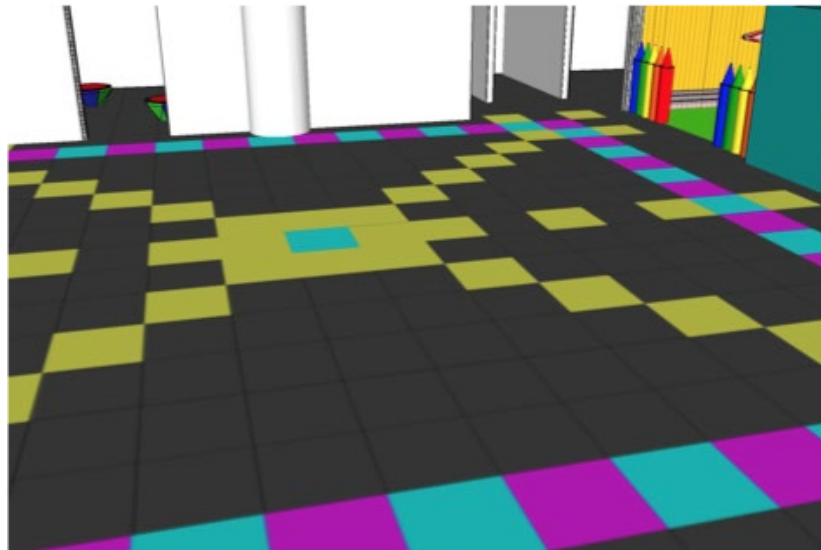
# Logistics: New Hours

- Proposed Reopening Date:
  - October 22 - Council/CMO Preview
  - October 31 - Launch Soft Public Opening (Members first, followed by public)
- Reduced Admission Price:
  - 50% for first two months
- Online Ticketing Strongly Encouraged
- Reduced Open Hours for Nov/Dec:
  - Thurs - Sat: 10:00 AM – 4:00 PM
  - Sun: 12:00 PM – 4:00 PM



# Logistics: Limited Museum Capacity

- Timed admission and reduced capacity
- Starting with 50 visitors per session in each museum at one time
- Capacity limits based on moderate range of COVID-19 community spread
- Will reevaluate capacity in January based on public health situation



# AZMNH - Programs Available at Opening

## Galleries

- Dinosaur Hall and Dinosaur Mountain
- Grubb Collection
- Cultures of Ancient Americas, Native Cultures of Western North America
- Origins Gallery and Mineral Gallery
- Dioramas: AZ Seas, Triassic Forest, Jurassic AZ, Cretaceous Seas
- Never Sweat Mine & Gold Panning Courtyard

## Rotating Openings during Gallery Lighting Renovation Project

- Southwestern Cultures, AZ in the Movies, Spanish Mission, Territorial Jail

## Galleries in Transition (currently closed)

- Main Floor Gallery - installation in process
- Highly interactive DinoZone removed, new exhibition to come

## Closed for safety

- Dino Dig Pit, Lost Dutchman's Mine, Exploration Station

# i.d.e.a. Museum - Programs Available at Opening

## Galleries

- ArtVille, Hub and Whiteman Family Galleries open
- Pre-packaged art materials; Family Tables

## Re-calibrated interactives to no-touch & low-touch

- New pathway for Rody riding (inflatable horse)
- New Camper instead of Train
- Colored lights w/movement activity in Wee Design
- OPArt & mini Junkyard Jungle in Recyclery

## Exhibition

- *Art of the Story* (only open briefly prior to closure)

## Closed for safety

- Blacklight Room, Zen Den & Snackery



# Sneak Peek: Future Programming

## AZMNH

- Coming in March:
  - *75 Million B.C.* exhibition
  - Archeology and Paleontology

## i.d.e.a. Museum

- Coming in January:
  - Atrium Reopens with NEW activities
- Coming late spring/early summer:
  - *Robo Art* exhibition



# Questions?

