

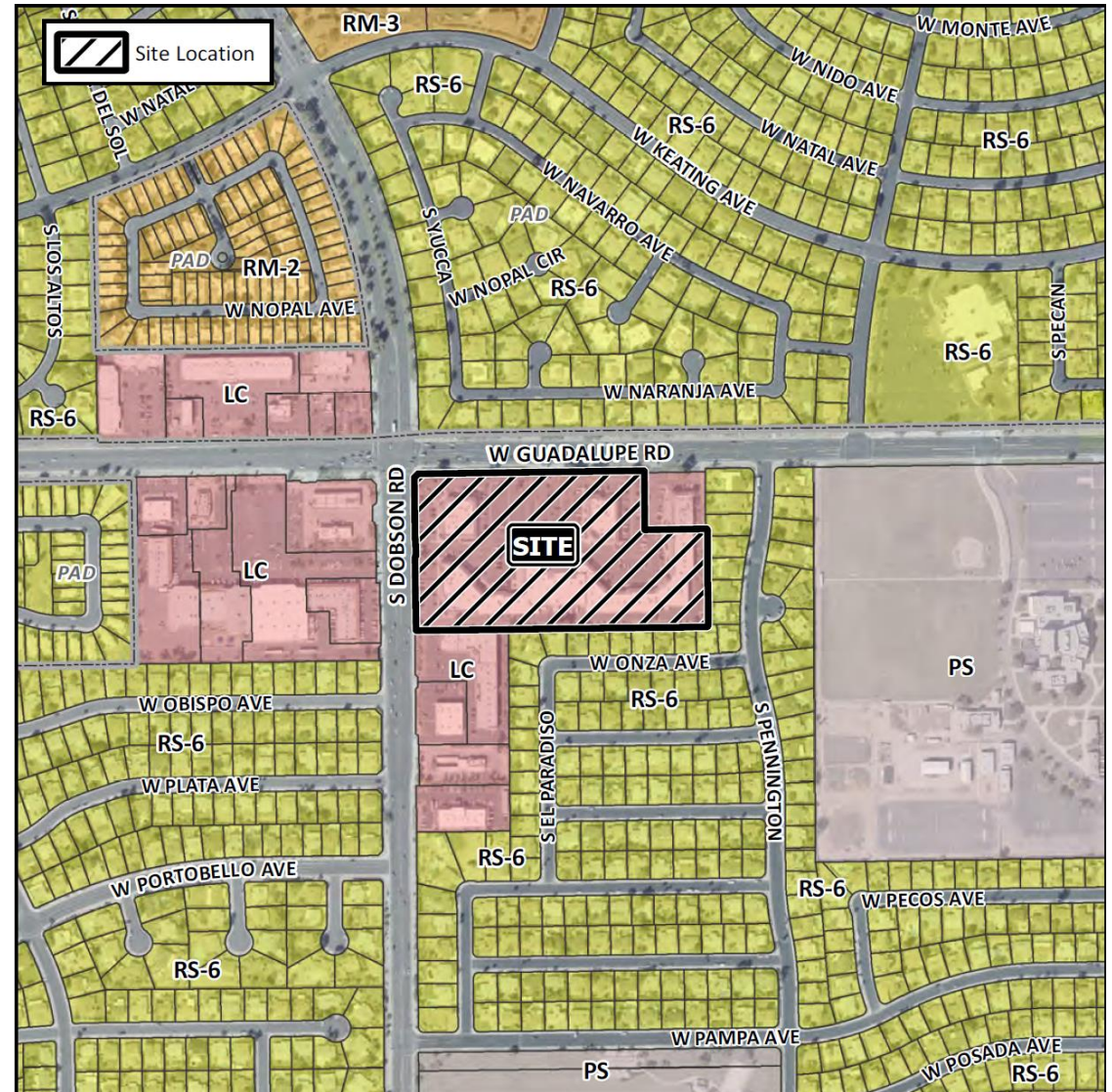


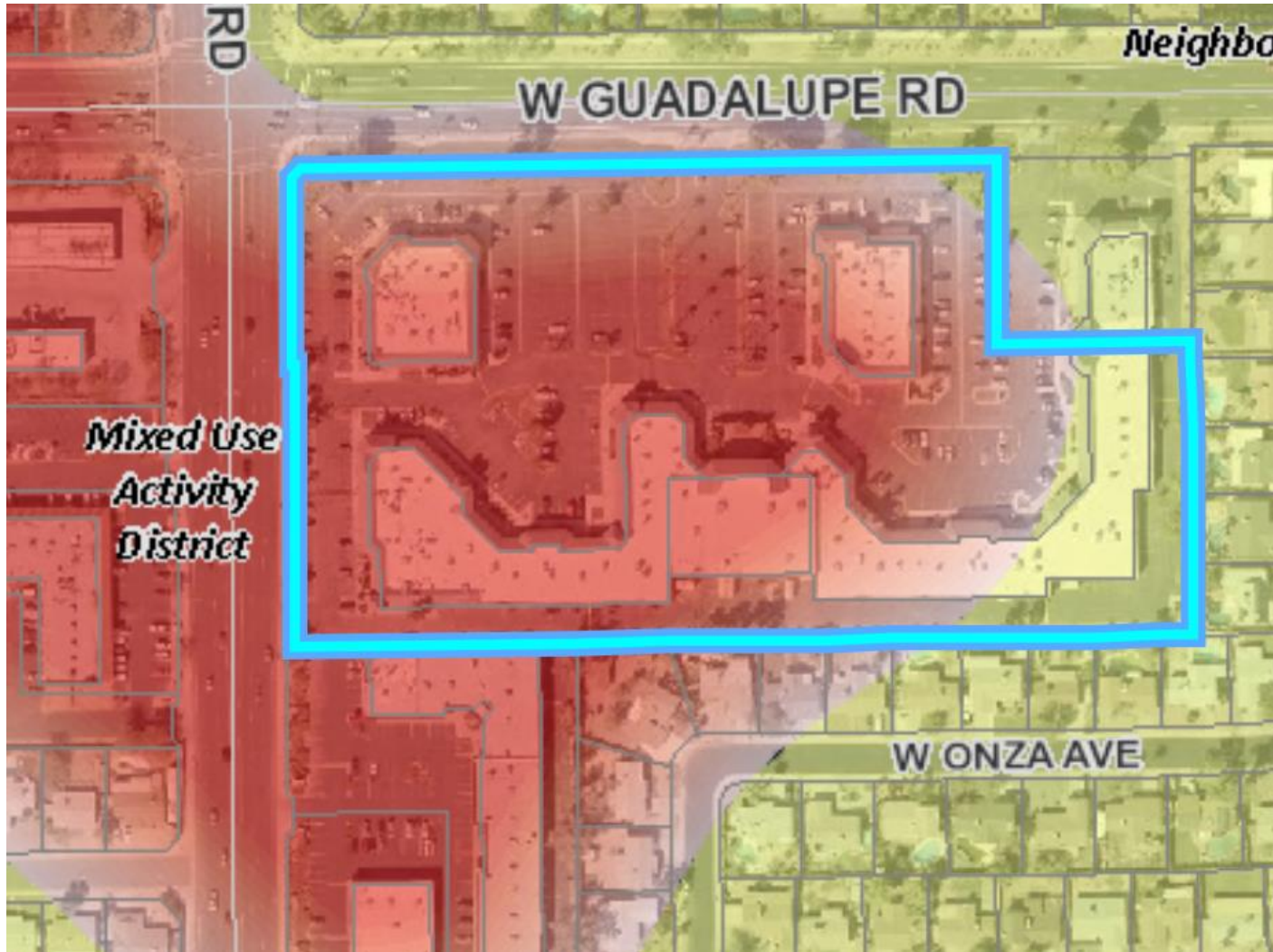
BOA20-00453

KITTY PAUSE CAT CAFÉ

Location

- SEC of Guadalupe and Dobson
 - Existing Shopping Center
 - Suite 107 and 108





General Plan

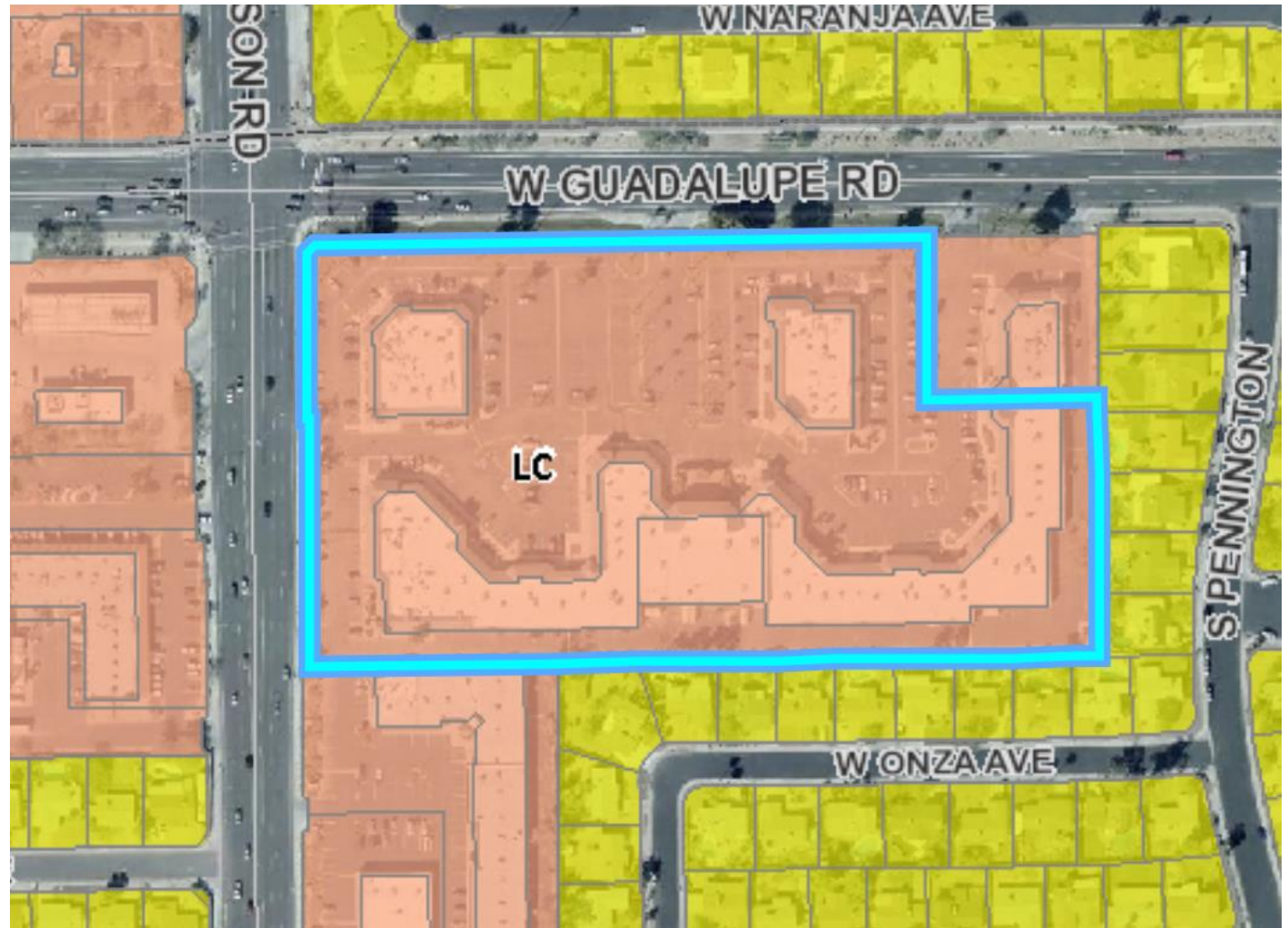
Mixed-Use Activity District

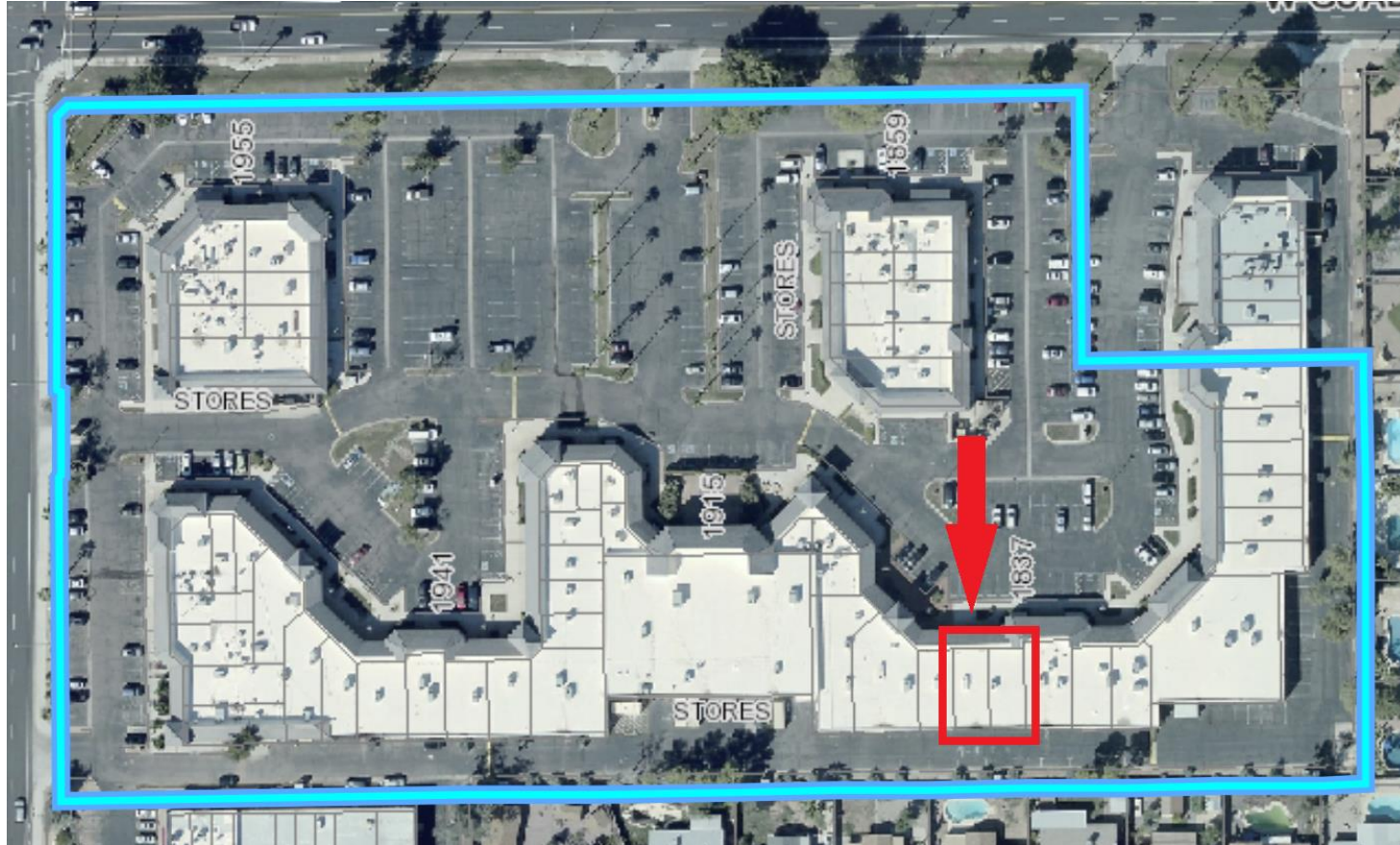
- large-scale community and regional activity areas
- includes shopping areas that are designed and developed to attract customers from a large radius.

Zoning

Limited Commercial (LC)

- A café is a permitted use in the LC Zoning District
- A kennel requires a SUP in the LC Zoning District
 - confined to a completely enclosed, sound-attenuated facility.





Request

- SUP

Purpose

- To allow a kennel in the LC District.

Site Photos



- Customer entry into café
- Internal vestibule connecting café and cat lounge



Summary

Findings

- ✓ Complies with the 2040 Mesa General Plan
- ✓ Criteria for the granting a SUP as outlined in Section 11-70-5(E) of the Mesa Zoning Ordinance

Staff Recommendation

Approval with Conditions