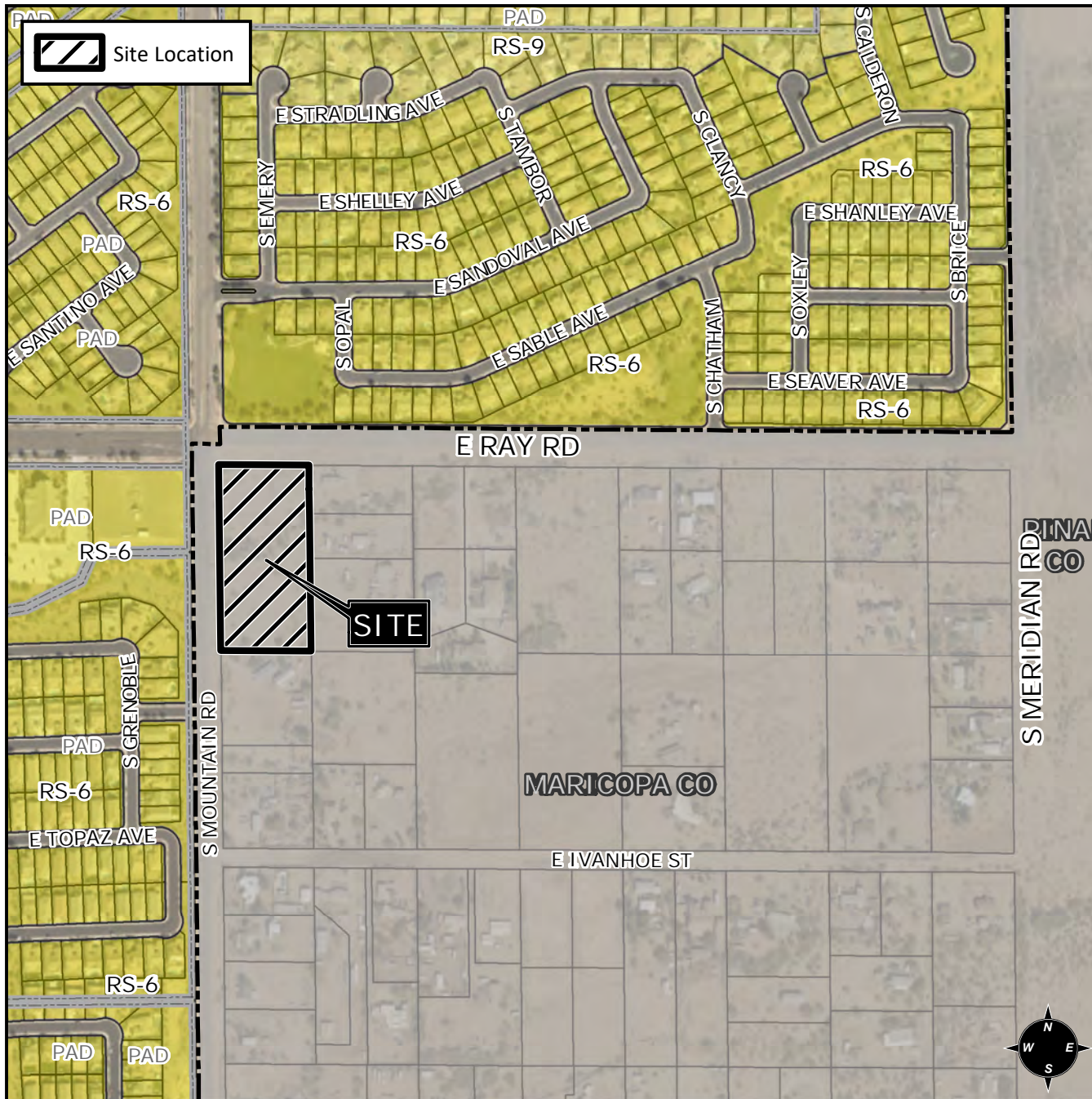


Planning and Zoning Vicinity Map: ZON20-00207

Case Details



CASE:

PRE-PLAT : ☐

ZON20-00207

SITE / ADDRESS:

District 6. Within the 11200 block of East Ray Road (south side) and within the 5200 block of South Mountain Road (east side). Located west of Meridian Road on the south side of Ray Road. (3.9± acres)

REQUEST:

Rezone from RS-43 to NC. This request will establish commercial zoning for future development.

