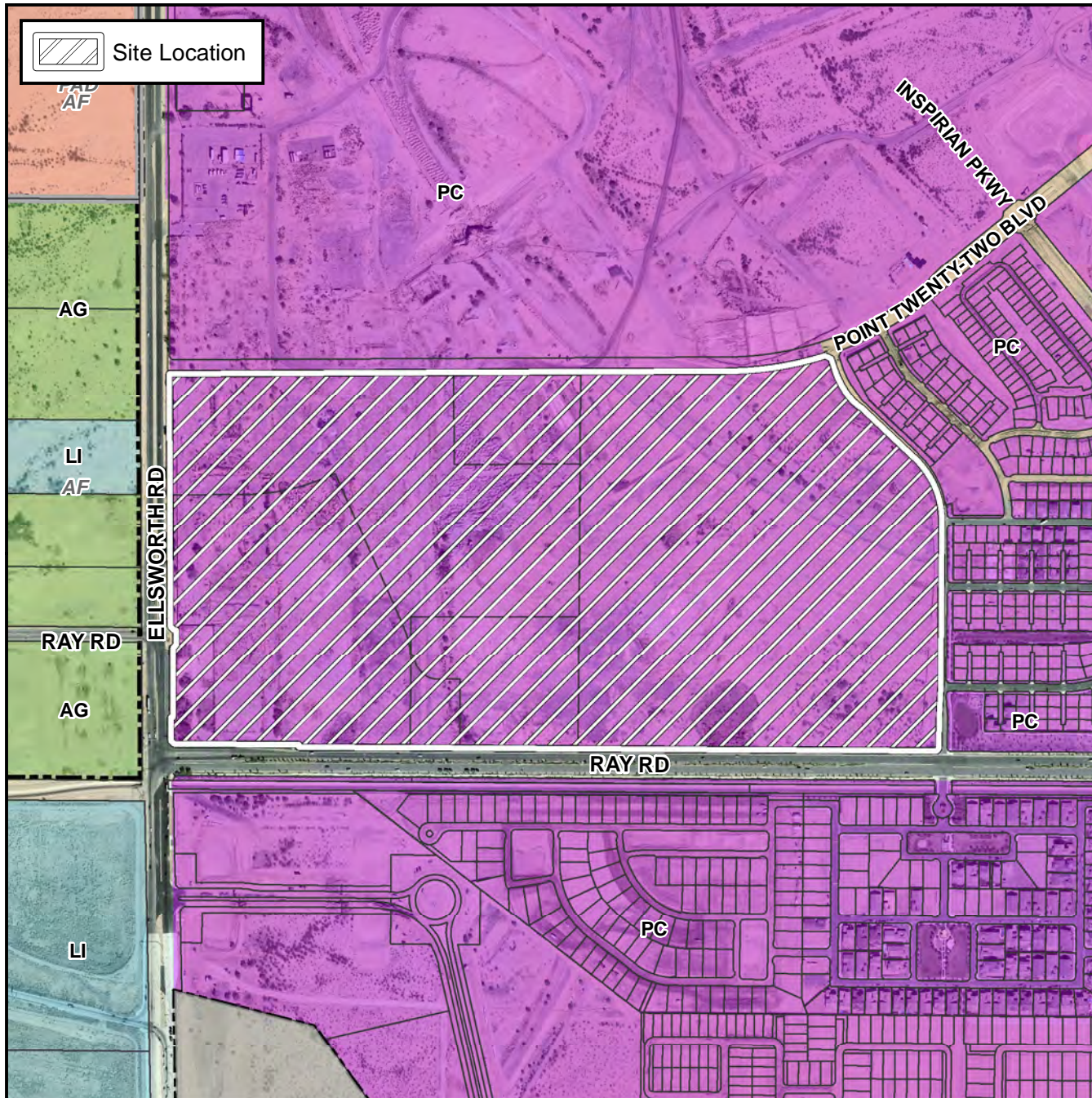


Preliminary Plat Vicinity Map



Case Details

Project:

Eastmark Commercial

Site / Address:

District 6. The 9200 to 9700 blocks of East Ray Road (north side) and the 4900 to 5100 blocks of South Ellsworth Road (east side). Located on the northeast corner of Ellsworth and Ray Roads. (130± acres).

