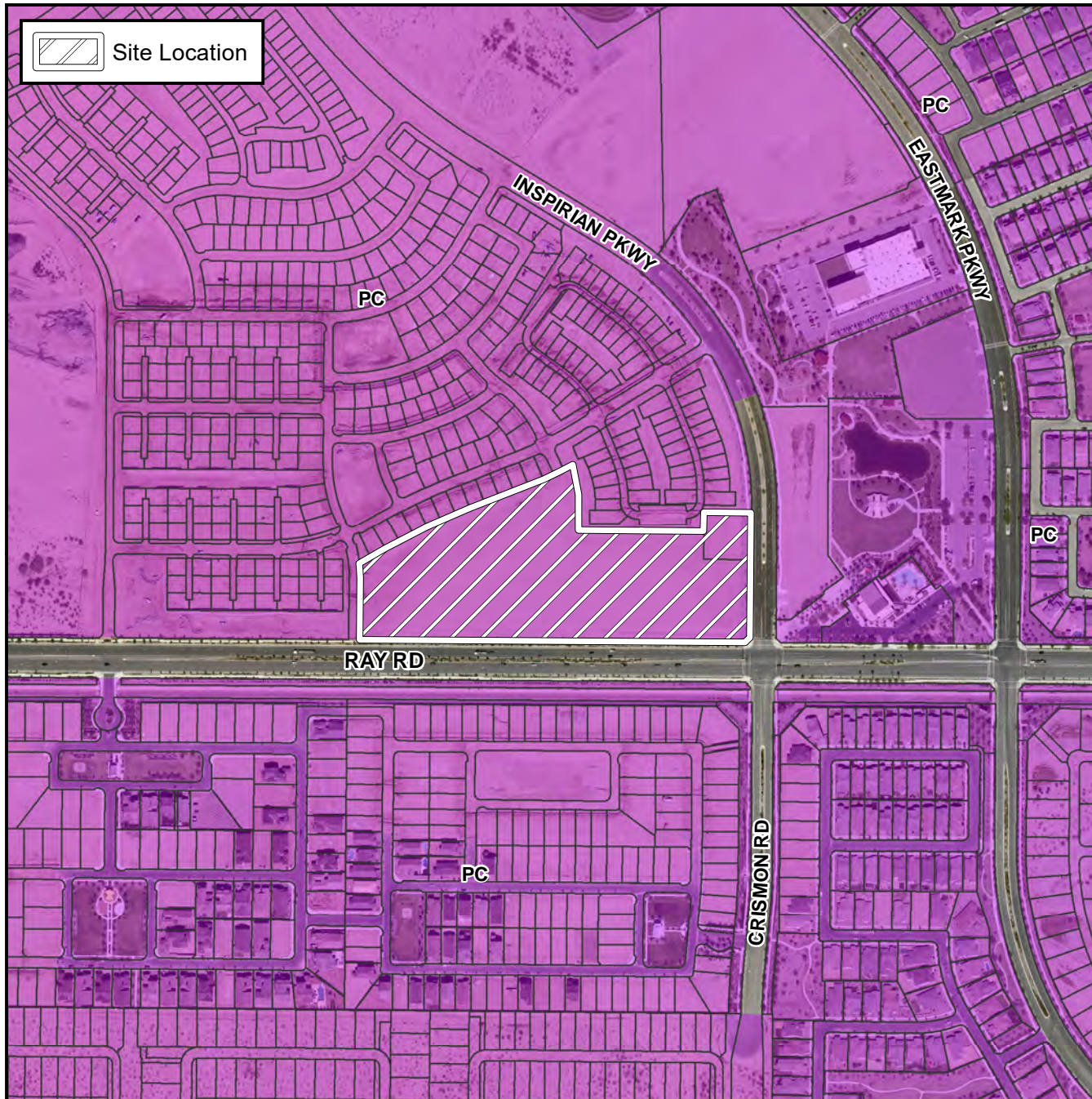


## Final Plat Vicinity Map



## Case Details

### Project:

Eastmark Development Unit DU 3/4 - Parcel 4

### Language:

"Eastmark Development Unit DU 3/4 - Parcel 4" (District 6) The 9800 - 10,000 blocks of East Ray Road (north side). Located east of the northeast corner of Ellsworth and Ray Roads. 132 PCD attached single residence lots. (11.27 ± acres). BB Mesa Gateway, LLC., Developer; Douglas B. Toney, Bowman Consulting, Surveyor.

