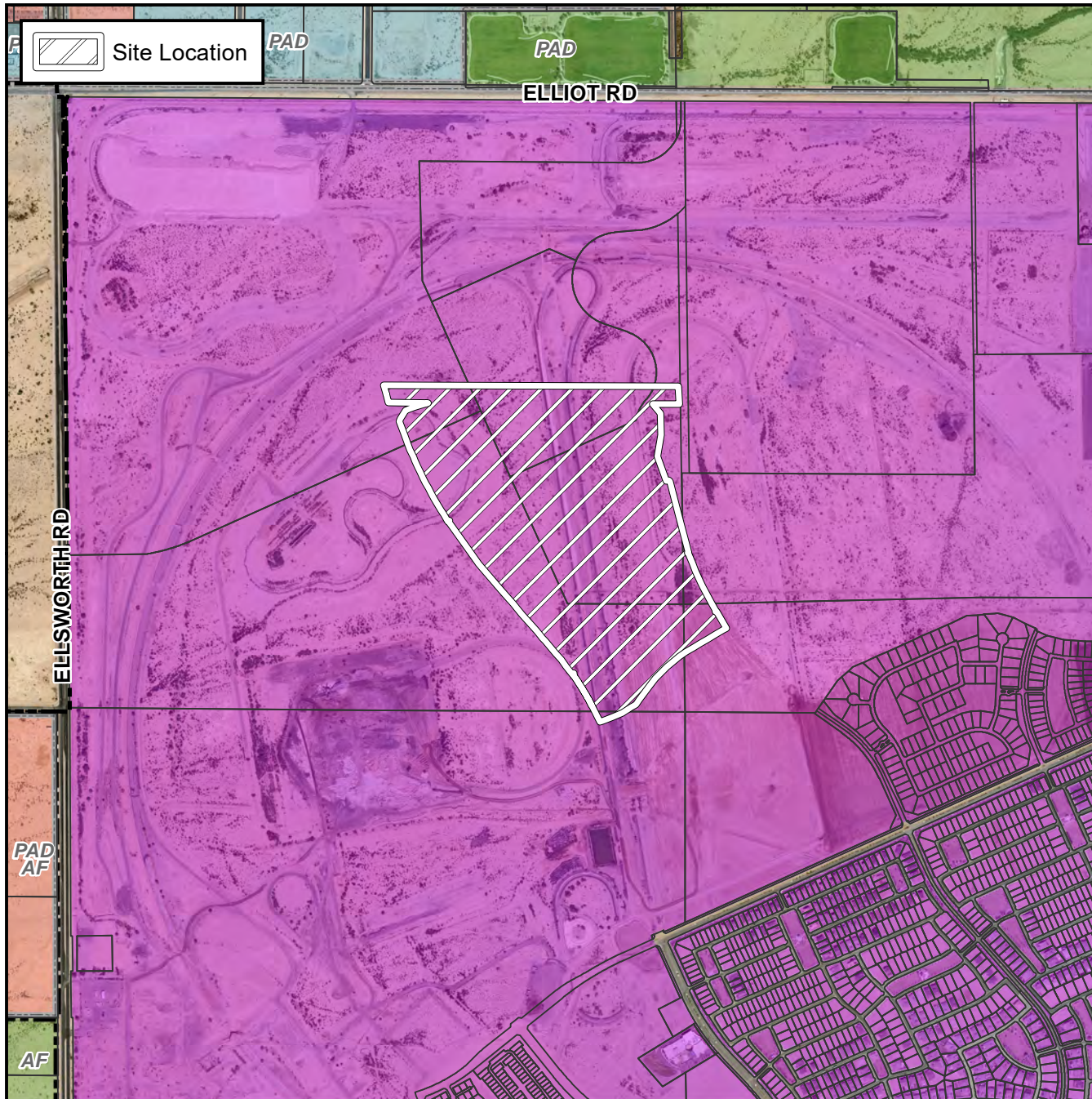


Final Plat Vicinity Map



Case Details

Project:

Eastmark Development Unit 5/6 South
Parcels 6-16 and 6-18 to 6-23

Language:

"Eastmark Development Unit 5/6 South
Parcels 6-16 and 6-18 to 6-23". (District
6) The 3900 – 4400 blocks of South
Eastmark Parkway (east side) and the
3900 – 4200 blocks of South Everton
Terrace (west side). Located south and
east of Elliot and Ellsworth Roads. 405
PCD single residence lots. (107.8 ±
acres). DMB Mesa Proving Grounds,
LLC., Developer; Kenneth P. Converse,
Hoskin Ryan Consultants, Inc., Surveyor.

