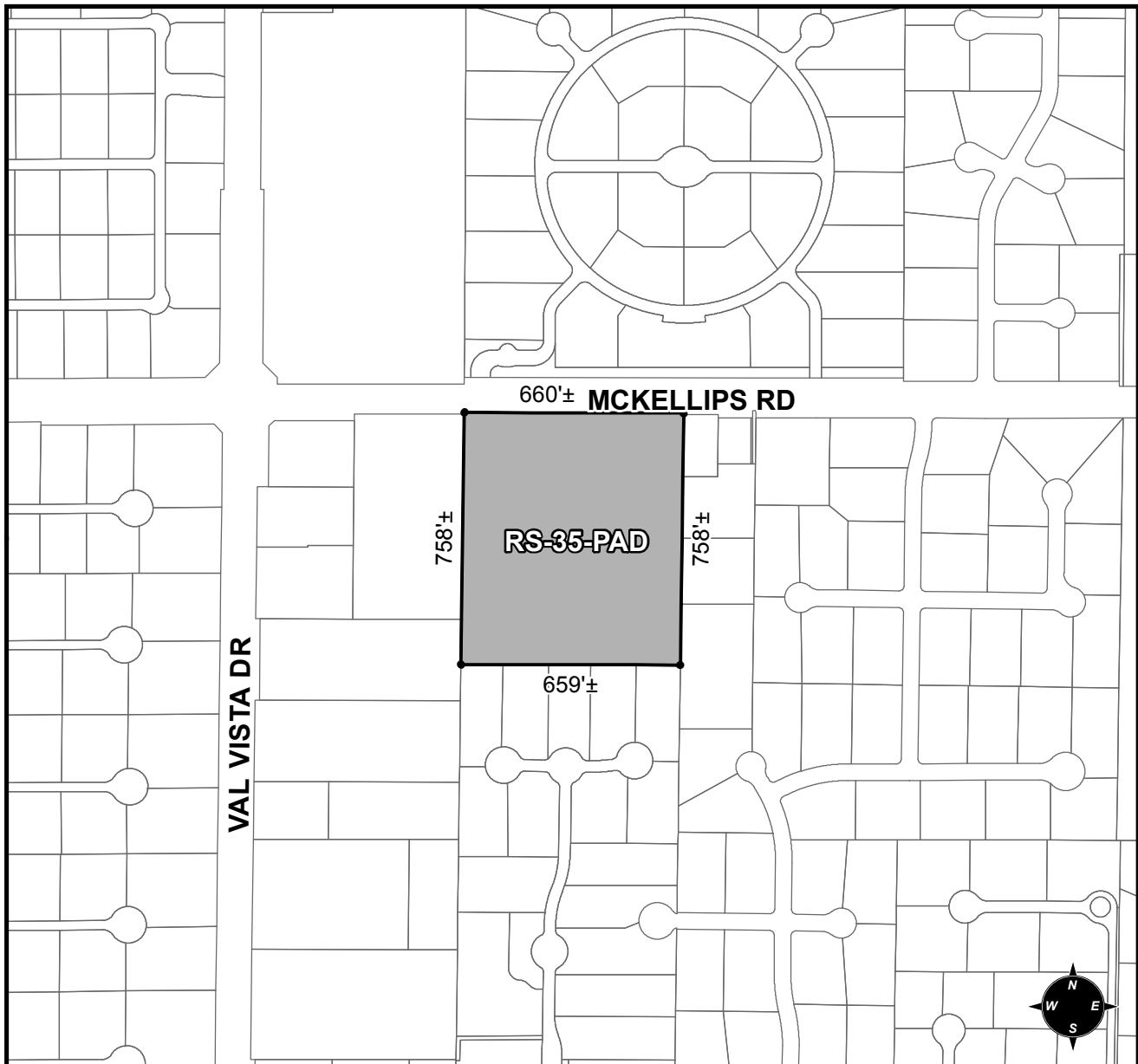




OFFICIAL SUPPLEMENTARY ZONING MAP AMENDING THE CITY OF MESA ZONING MAP



CASE: ZON17-00158
ACREAGE: 11.48±
REQUEST: REZONE FROM RS-35 TO RS-35-PAD

ORDINANCE: _____

Please be advised that the attached zoning changes were approved by the Mesa City Council on _____, 2017 by Ordinance # _____. If you have any questions concerning these changes, contact the City of Mesa Planning Division at 480-644-2385.

MAYOR

ATTEST: _____
CITY CLERK

DATE: _____