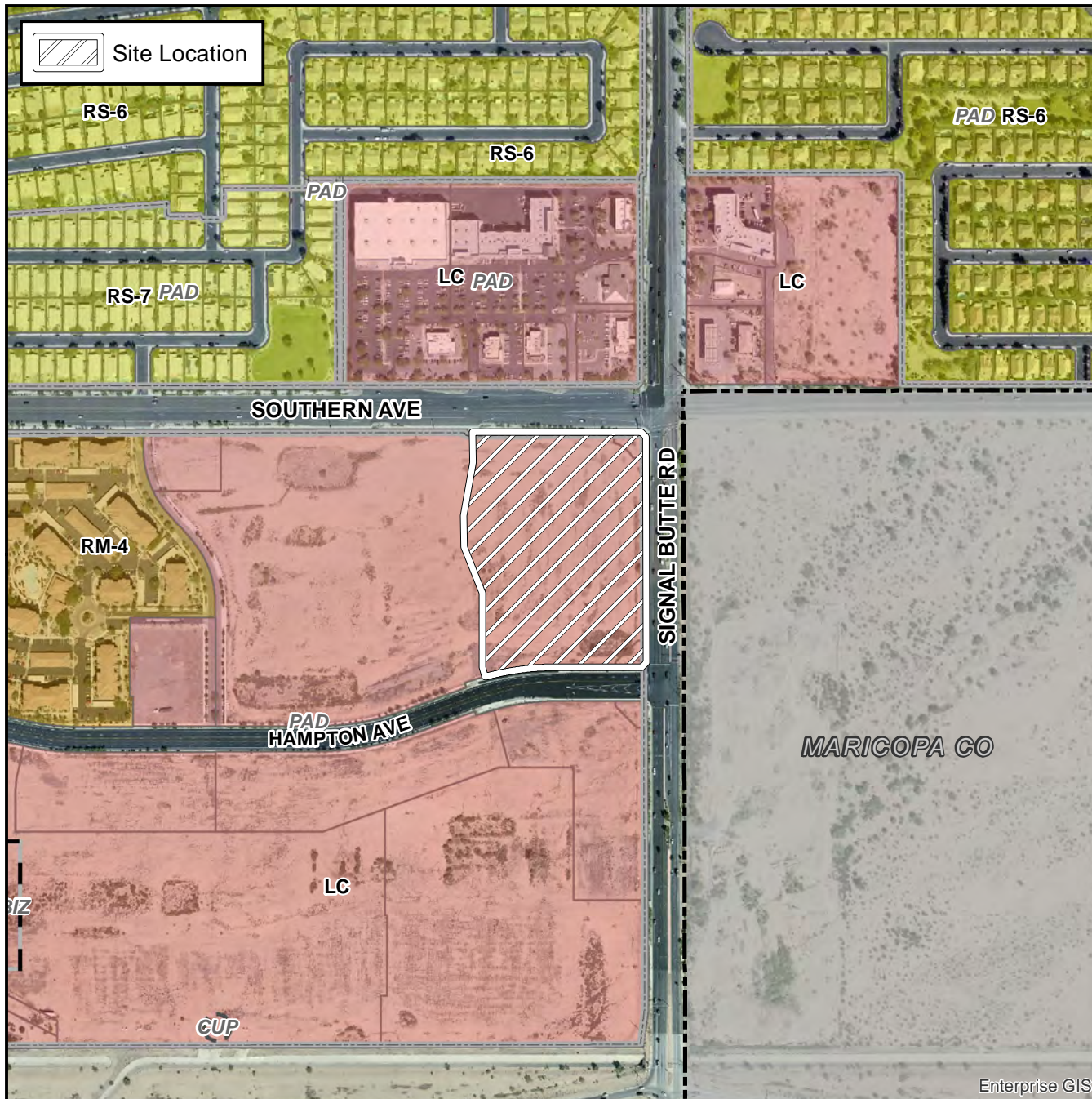


Planning and Zoning Vicinity Map: ZON17-00045



Case Details

CASE:

PRE-PLAT : ☐

ZON17-00045

SITE / ADDRESS:

The 10700 to 10800 blocks of East Southern Avenue (south side) and the 1200 through 1300 blocks of South Signal Butte Road (west side). District 6. Located on the south side of Southern Avenue on the west side of Signal Butte Road. (9.5± acres).

REQUEST:

Site Plan Review. This request will allow for development of a commercial center in the LC-PAD zoning district.

