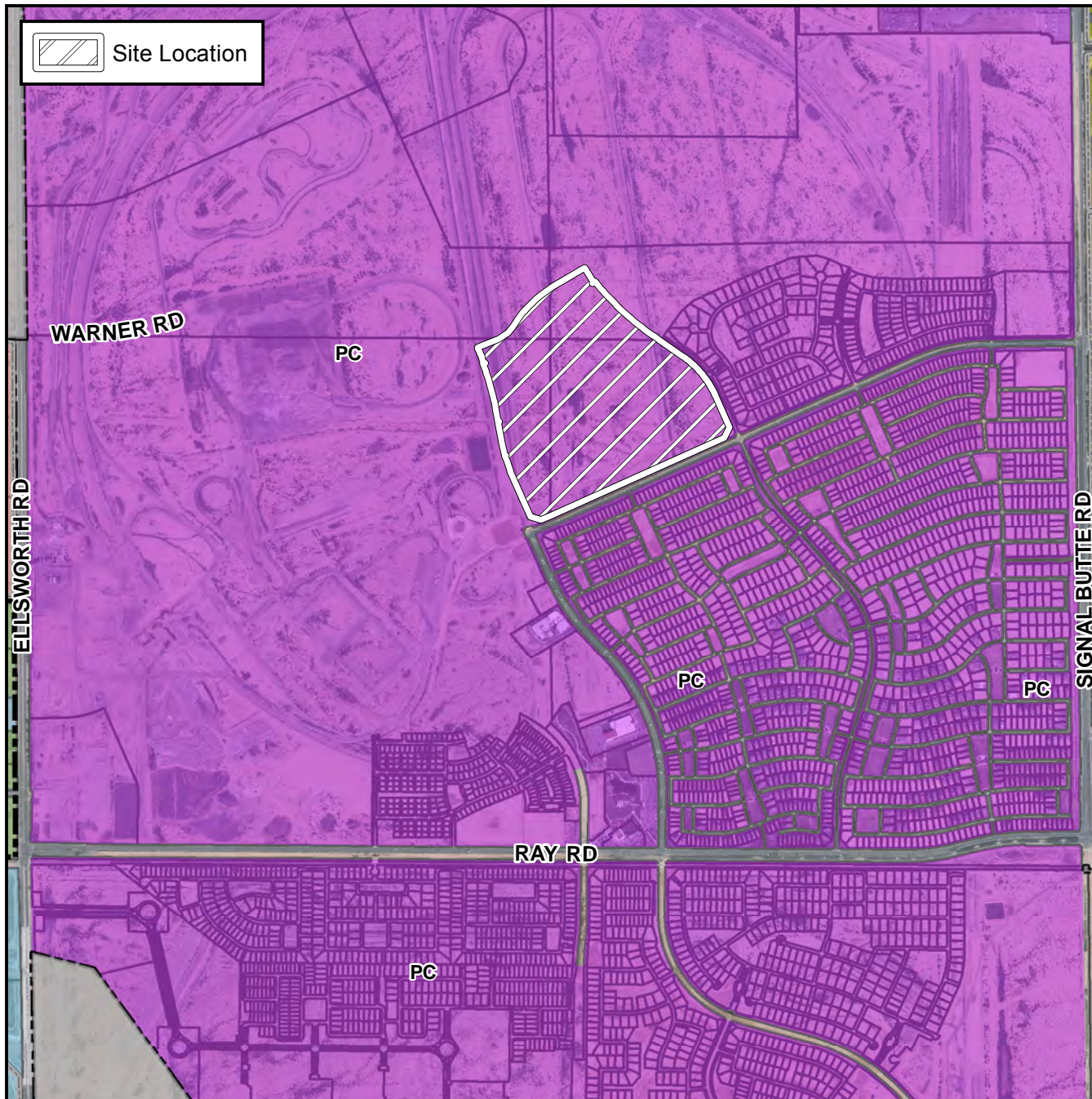


Final Plat Vicinity Map



Case Details

Project:

Eastmark Development Unit 6 South
Parcels 6-10 to 6-15

Language:

"EASTMARK DEVELOPMENT UNIT 6 SOUTH PARCELS 6-10 to 6-15". (District 6). The 9900-10200 blocks of East Point Twenty-Two Boulevard (north side) and the 4400-4700 blocks of South Eastmark Parkway (east side) Located north and east of Ray and Ellsworth Roads. 332 PCD single residence lots. (83.97± acres) DMB Mesa Proving Grounds, LLC, owner; Kenneth P. Converse, Hoskin Ryan Consultants, Inc., Surveyor.



0 400 800
Feet

