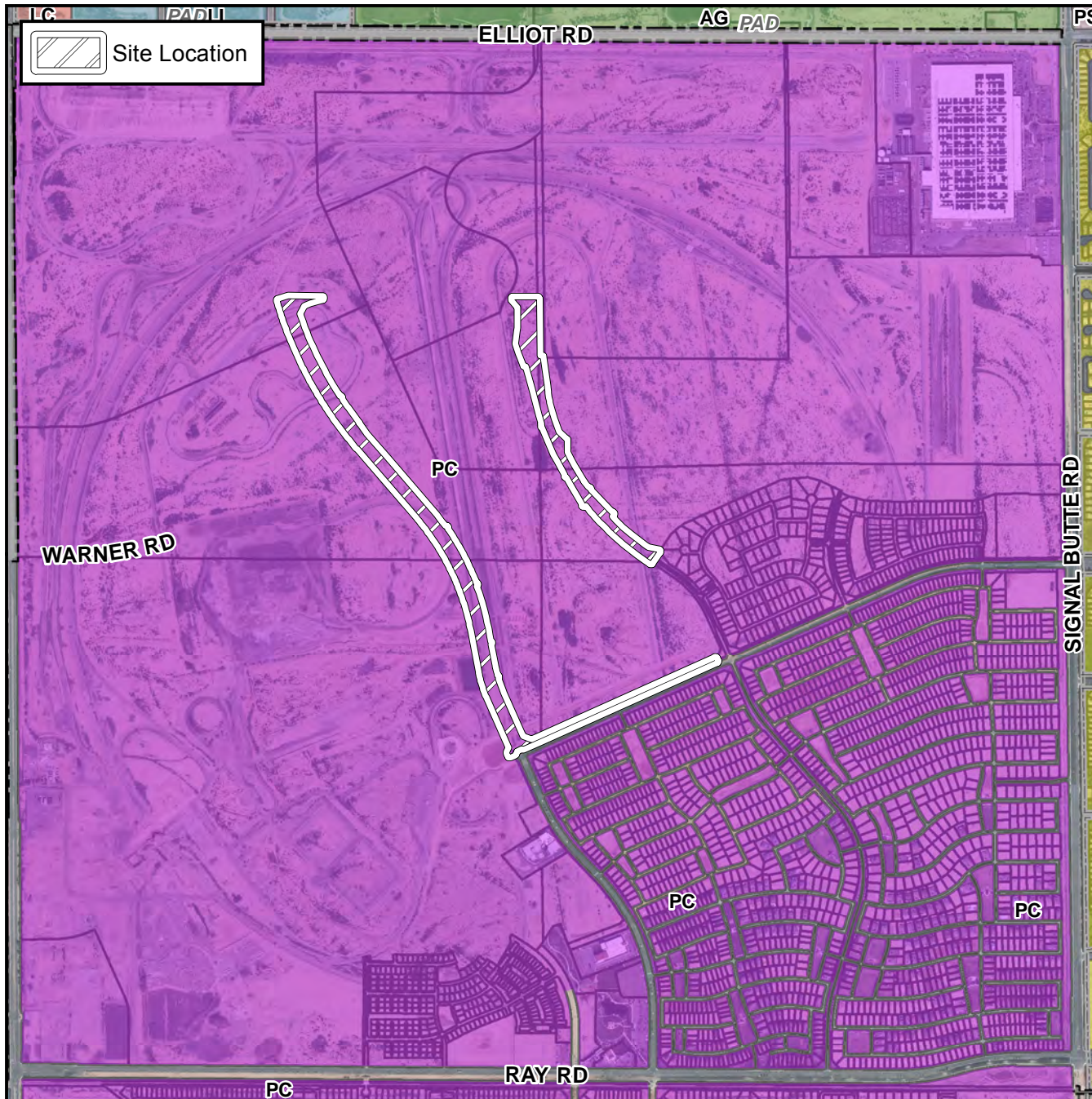


Final Plat Vicinity Map



Case Details

Project:

Eastmark Development Unit 6 -
Infrastructure for Parcels 4-6 and 9-23

Language:

"EASTMARK DEVELOPMENT UNIT 6-
INFRASTRUCTURE FOR PARCELS 4-6
AND 9-23". (District 6). The 3900-4700
blocks of South Eastmark Parkway, the
9900-10200 blocks of East Point Twenty-
Two Boulevard and the 4000-4400 blocks
of South Everton Terrace. Located north
and east of Ray and Ellsworth Roads. 15
PCD landscape tracts. (26.03± acres)
DMB Mesa Proving Grounds, LLC, owner;
Kenneth P. Converse, Hoskin Ryan
Consultants, Inc., Surveyor



0 400 800
Feet

