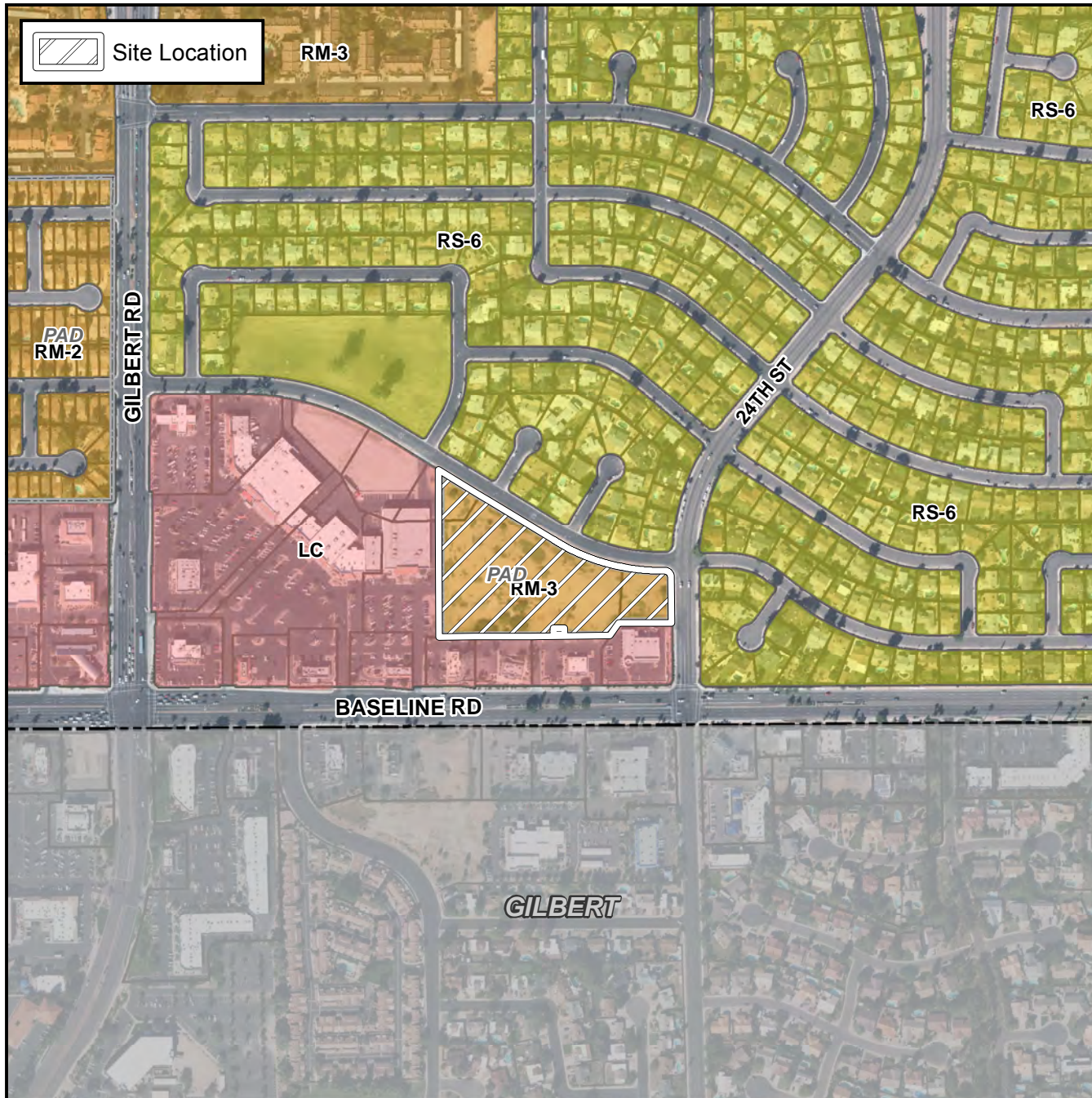


Final Plat Vicinity Map



Case Details

Project:

Jacinto Place

Language:

"JACINTO PLACE". (District 3). The 2200 through 2300 blocks of East Jacinto Avenue (south side). Located north of Baseline Road and east of Gilbert Road. (5.37 ± acres). Nextgen Apartments-Gilbert/Baseline, LLC. Developer; David Bohn, P.E, Westwood Professional Services, Inc. Engineer.

