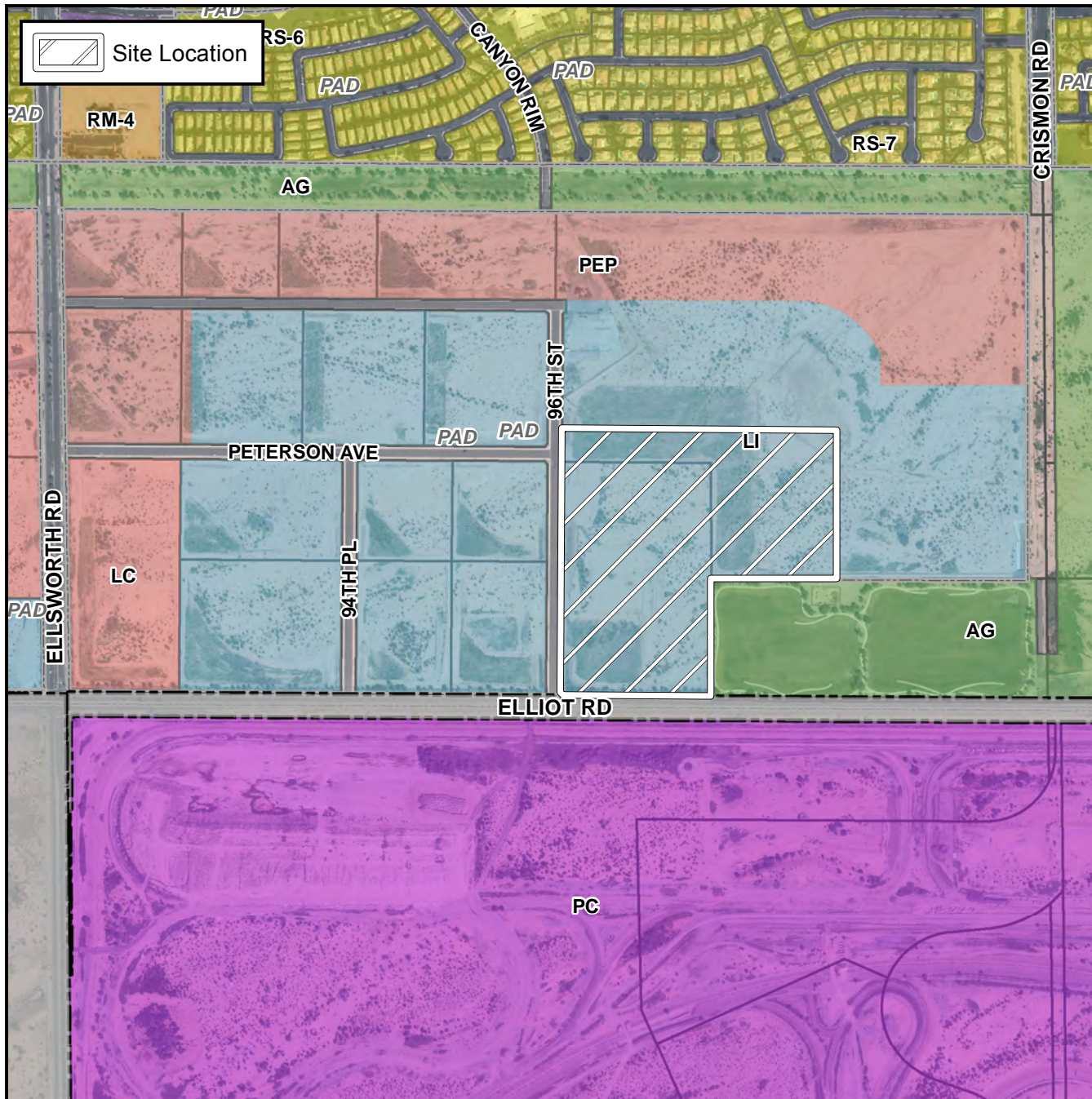


## Final Plat Vicinity Map



## Case Details

### Project:

Mesa Technology Business Park

### Language:

"Mesa Technology Business Park". (District 6). The 9600 block of East Elliot Road (north side) and the 3400 to 3600 block of South 96th Street (east side). Located east of the northeast corner of Ellsworth and Elliot Roads. 2 LI industrial lots. (38.2 ± acres). Sunbelt Land Holdings, L.P., owner; Jerry Heath, Hunter Engineering, Surveyor.

