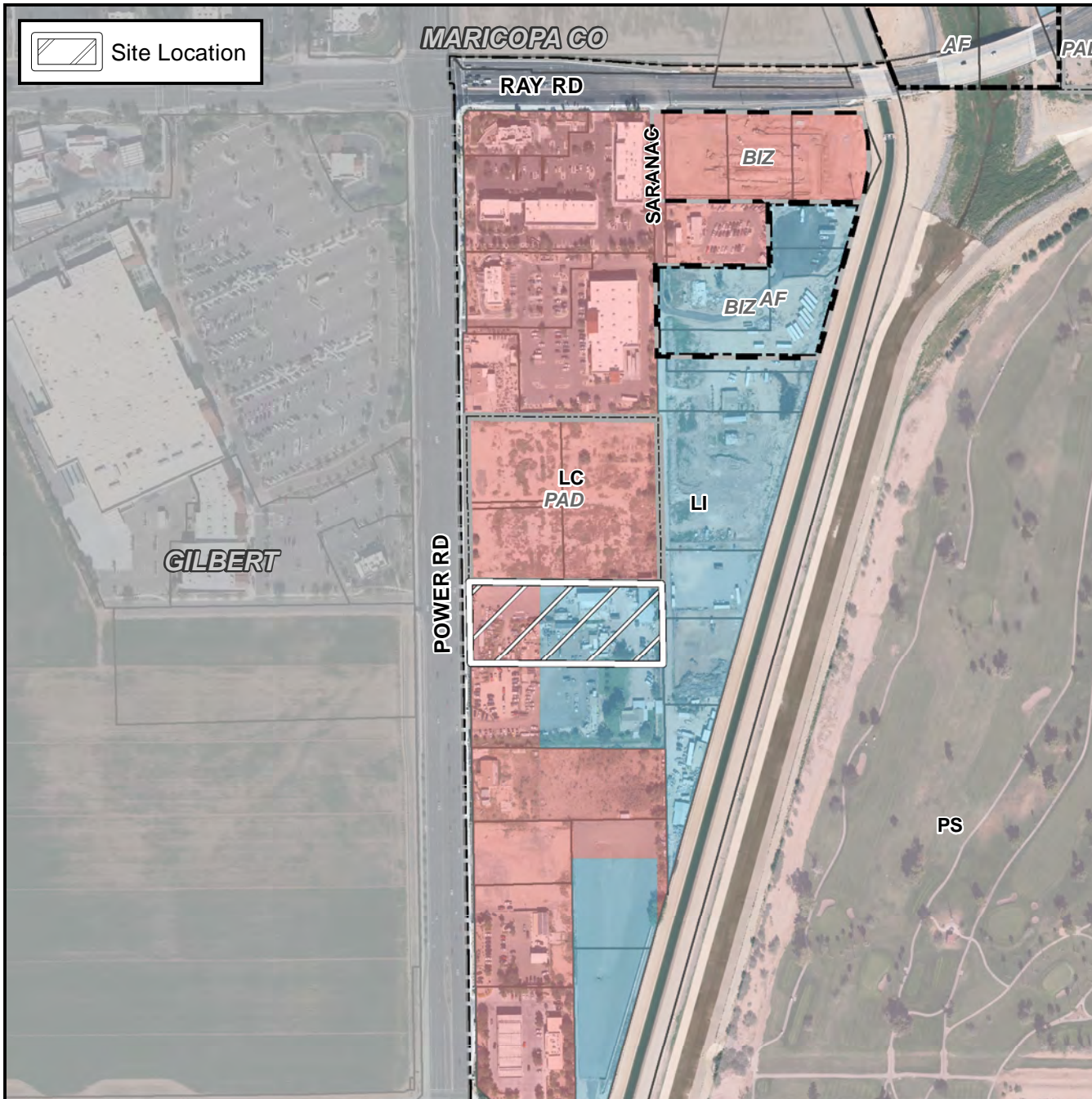


Planning and Zoning Vicinity Map: Z17-011

Case Details



CASE:

PRE-PLAT : ☐

Z17-011

SITE / ADDRESS:

The 5400 block of South Power Road (east side). District 6. Located south of Ray Road on the east side of Power Road.

REQUEST:

Site Plan Review. This request will allow for the development of a medical marijuana facility.



0 400 800
Feet

