

City of Mesa PAD Overlay Structure Height Maximums* (DRAFT) Attachment

LEGEND

- 1,425' AMSL
Sloping Max Height
- 1,450' AMSL
Sloping Max Height
- 1,460' AMSL
Sloping Max Height
- 1,469' AMSL
Maximum Height
- 1,500' AMSL
Maximum Height
- 1,533' AMSL
Maximum Height

AMSL= Above Mean Sea Level
(NAVD 88)

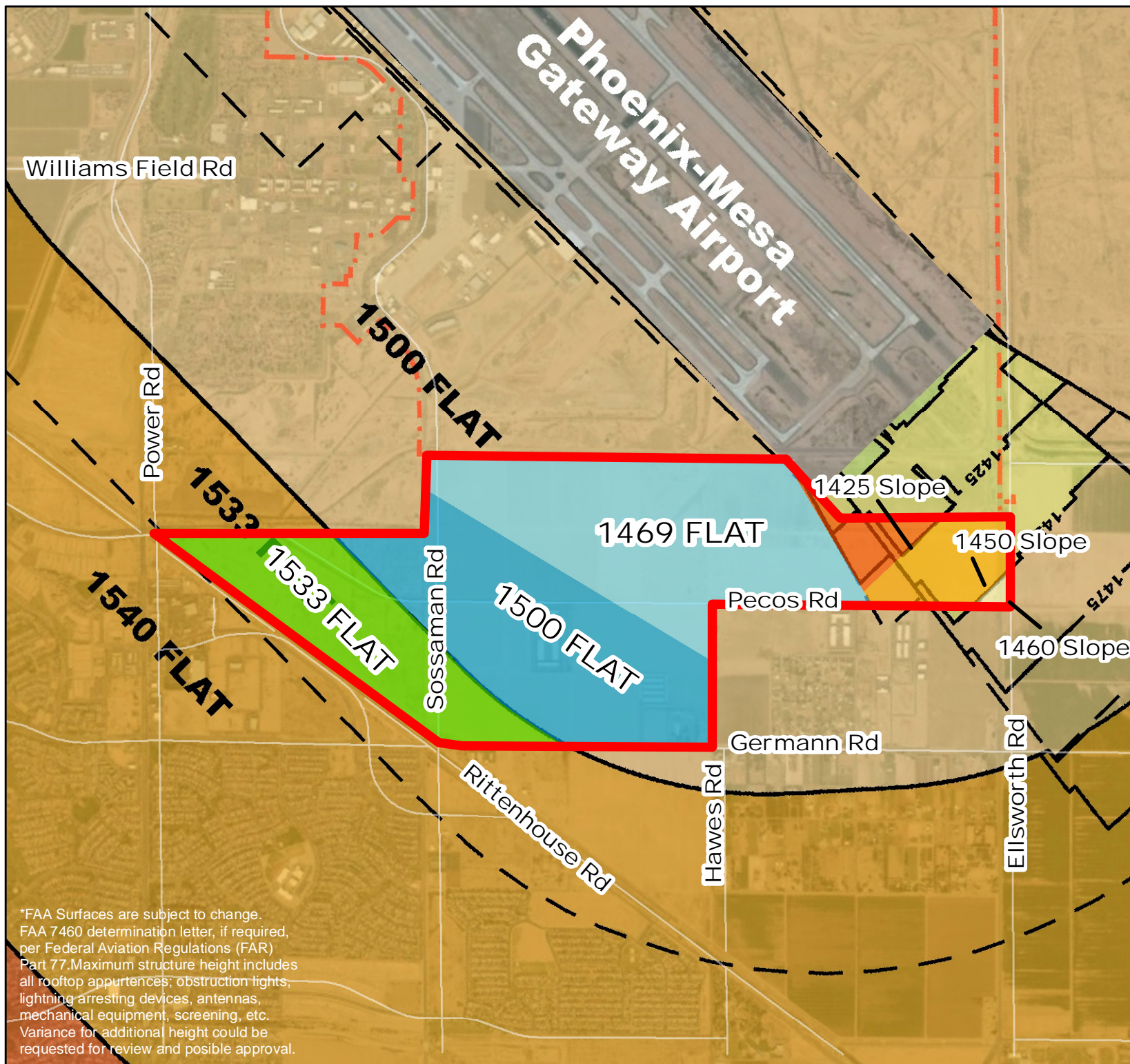
- Proposed PAD
Boundary
- Gateway Airport
Boundary



0 0.25 0.5 Miles

Phoenix-Mesa Gateway Airport Authority
makes no claims concerning the accuracy
of this map nor assumes any liability resulting
from the use of the information herein.

MAP CREATION DATE: 1/12/17



*FAA Surfaces are subject to change.
FAA 7460 determination letter, if required,
per Federal Aviation Regulations (FAR)
Part 77. Maximum structure height includes
all rooftop appurtenances; obstruction lights,
lightning arresting devices, antennas,
mechanical equipment, screening, etc.
Variance for additional height could be
requested for review and possible approval.