

E-Bike Code Updates & Communication Strategy

December 4, 2025

Andrea Moore, Director

Haylie Smith, PRCF Support Services Administrator – SA

Lieutenant Ryan Stokes, Mesa PD

Captain Jim Barnhart, MFMD



Overview

Current Code & City Comparison

Proposed E-Bike Updates to City Code

Vandalism and Safety Concerns with E-Bikes

Public Outreach and Communication Strategy

Enforcement Strategy



Current Code & Laws

E-Bikes are prohibited in City of Mesa parks, only non-motorized bikes are allowed

Riders must be 16 years of age or older to ride an e-bike in Mesa

Understand basic rules of the road and the concept of right-of-way

15 MPH speed limit on shared-use paths



City Comparison

	Gilbert	Scottsdale	Tempe	Phoenix	Chandler
E-Bikes Allowed In Parks?	✓	✓	✓	⊘	⊘
Stipulations?	Class 1, 2, & 3	Class 1 & 2	Motor Disengaged	N/A	N/A
Age Requirement?	✓	✓**	✓	✓	✓**
Helmet Requirement?	⊘	⊘	✓	⊘	⊘

**Age requirement for Class 3 E-Bikes only

Updates to City Code

Definitions added for E-Bikes and difference between motor vehicles and motorized electric vehicles

Class 1 & 2 E-Bikes & E-Scooters are allowed in City of Mesa parks wherever bikes are allowed

- *Must be operated safely (5 MPH speed limit in parks added to traffic code)

- *Helmet requirement added to traffic code for riders under 18

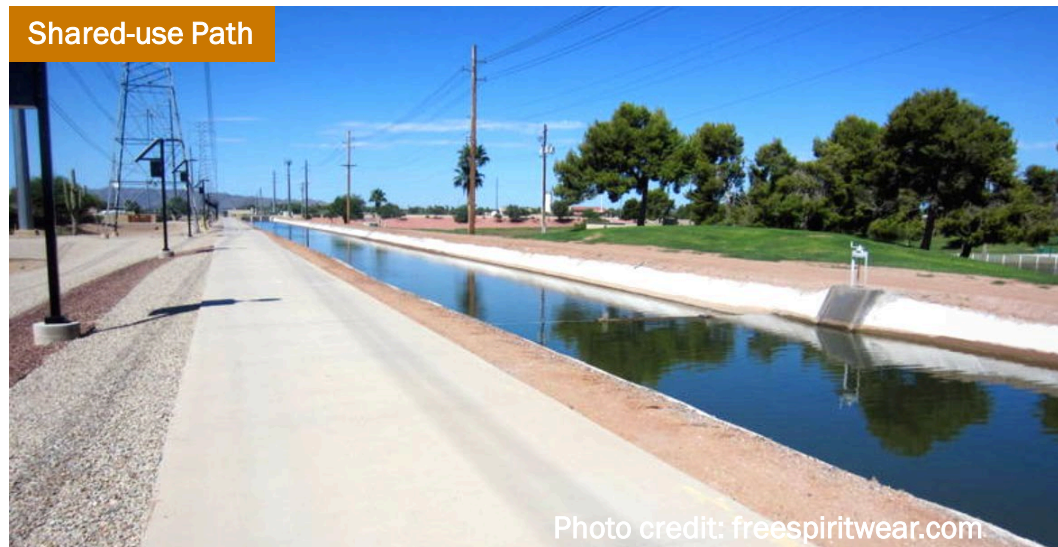
Multi-use path language in parks code → Shared-use path

Shared-Use Paths & Sidewalks

Class 1 & Class 2 E-Bikes and E-Scooters will be allowed on shared-use paths (canal paths) AND on sidewalks in parks

Current

15 MPH Speed Limit



New

5 MPH Speed Limit



Photo credit: freespiritwear.com

E-Bike Definition

A vehicle having two or three wheels, with fully operable pedals, and an electric motor not exceeding seven hundred fifty (750) watts of power.

Usage is on the rise.



E-HYBRID



E-FAT



E-CRUISER



E-ROAD



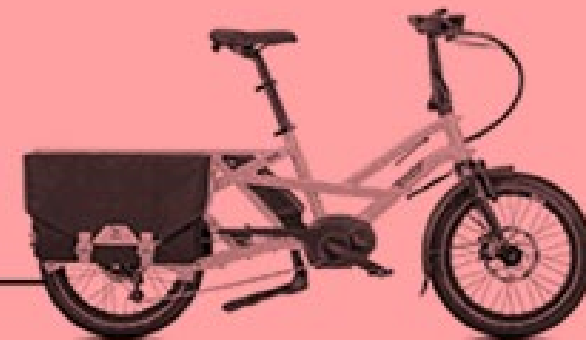
E-MOUNTAIN



E-GRAVEL



E-FOLDING

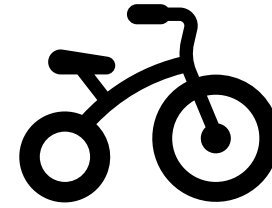


E-CARGO



E-HUNTING

E-Bike Classifications



	Bicycle	Class 1 E-Bike	Class 2 E-Bike	Class 3 E-Bike	Electric Mini Scooter	Electric Standup Scooter
Pedal Assist	✓	✓	✓**	✓	N/A	N/A
Top Speed	N/A	20 MPH	20 MPH	28 MPH	10 MPH	20 MPH
Currently Allowed in Parks?	✓	✗	✗	✗	✗	✗
Allowed in Parks w/ Code Updates?	✓	✓	✓	✗	✓	✓

**Class 2 pedaling NOT REQUIRED for motor assistance

Clear Definitions: Motor Vehicle vs. Motorized Electric Vehicle

Motor Vehicle

A self-propelled vehicle or, for the purposes of the laws relating to the imposition of a tax on motor vehicle fuel, a vehicle that is operated on the highways of this state and that is propelled by the use of motor vehicle fuel. Motor vehicle includes, but is not limited to, an all-terrain vehicle, dune buggy, vehicle fuel powered automobile or truck, gas powered moped, motorcycle, motor driven cycle, motor vehicle, or off-road recreational motor vehicle.

Motorized Electric Vehicle

A vehicle including, but not limited to, auto cycle, **class 1 electric bicycle***, **class 2 electric bicycle***, class 3 electric bicycle, **electric miniature scooter***, **electric mobility device***, **electric standup scooter***, electric powered automobile or truck, golf cart, electric powered moped, **motorized wheelchair***, motorized quadricycle, motorized skateboard, neighborhood electric shuttle, neighborhood electric vehicle, personal mobile cargo carrying device, or utility cart.

**Allowed in parks with code updates where bikes are allowed*



What does “Operated Safely” Mean?

Watching the speed (5 MPH park speed limit)

Using primarily on sidewalks in parks (NOT playgrounds, benches, tables, etc.)

Yielding right-of-way to pedestrians or people using a mobility device

Helmet requirement under 18

Riders must be 16 – it’s already the law

Seeing Damage Across Parks from Various Vehicle Types

Motor Vehicle

A self-propelled vehicle or, for the purposes of the laws relating to the imposition of a tax on motor vehicle fuel, a vehicle that is operated on the highways of this state and that is propelled by the use of motor vehicle fuel. Motor vehicle includes, but is not limited to, an **all-terrain vehicle***, dune buggy, vehicle fuel powered automobile or truck, **gas powered moped***, **motorcycle***, **motor driven cycle***, motor vehicle, or **off-road recreational motor vehicle***.

Motorized Electric Vehicle

A vehicle including, but not limited to, auto cycle, class 1 electric bicycle, class 2 electric bicycle, **class 3 electric bicycle***, **electric miniature scooter***, electric mobility device, **electric standup scooter***, electric powered automobile or truck, **golf cart***, **electric powered moped***, motorized wheelchair, **motorized quadricycle***, **motorized skateboard***, neighborhood electric shuttle, neighborhood electric vehicle, personal mobile cargo carrying device, or utility cart.

**Damaging our parks*

Basin 306



Stapley



Inspirian @ Eastmark



Chaparral



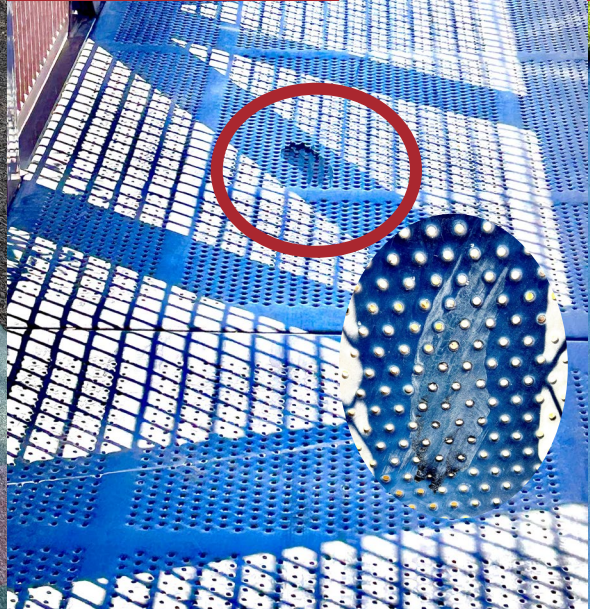
Desert Arroyo



Eastmark



Inspirian @ Eastmark



Candlelight



E-Bike Battery Hazards

The Problem

Damaged or defective batteries can overheat, catch fire, or explode

Lithium-ion battery fires give off toxic gases, and they burn extremely hot

Signs of a Problem

Change in shape

Unusual odor

Leaking

Change in color

Smoking

Too much heat

Not keeping a charge



Dramatic video shows e-scooter catch fire and explode into flames

E-Bike Battery Hazards

Safety Tips

Only purchase and use devices, batteries, and charging equipment that are listed by a nationally recognized testing lab and labeled accordingly

Always follow the instructions from the manufacturer

Only use the battery and the charger that were designed for, and came with, the device

Do not keep charging the device or device battery after it is fully charged

Only charge one device or device battery at a time to prevent overloading the circuit

Keep batteries at room temperature when possible. Do not charge them at temperatures below 32°F (0°C) or above 105°F (40°C)

E-Bike Battery Hazards

Safety Tips

Do not store batteries in direct sunlight or inside hot vehicles and keep away from children and liquids

Store e-bikes, e-scooters, and batteries away from exit doors and anything that can get hot or catch fire

Only have device repairs performed by a qualified professional

Do not put lithium-ion batteries in the trash – recycling is always the best option – take the batteries to a battery recycling location or contact your local waste department for disposal instructions

If You See a Fire Leave the building immediately

Don't try to fight the fire

Call 9-1-1

Campaign Goals

1. Increase safety throughout our community
2. Reduce property damage incidents
3. Increase community awareness of laws
4. Encourage peer accountability and reporting
5. Position Mesa as a proactive City prioritizing safety & accessibility

Slow Your Roll. Safety's the Goal.

Safe Rides. Good Vibes.

Share the Space. Enjoy the Place.

Slow Down, So Fun Goes Around.



**Mesa, Mind Your
Motors So Good Times
Keep On Rolling**

Mesa, Mind Your Motors So Good Times Keep On Rolling

Primary Audiences

Parents of Children Ages 10-17

Adult Park Visitors

Property Owners/Nextdoor Users

Secondary Audiences

Teens & Young Adults Ages 13-24

E-Bike Retailers & Rental Companies

Campaign Pillars

Be Mindful Of...

The Law

Safety

**Community
Property**



**Community
Awareness**

**Compliance
&
Enforcement**

**Course
Correction**

“Be Mindful Of...”

Riders must be 16 years or older

E-Bikes and E-Scooters are only allowed on sidewalks in parks

Helmets are required for riders under 18

5 MPH speed limit in parks

Mesa, Mind Your Motors So Good Times Keep On Rolling

Newsletter Articles (partner with HOAs)

Flyers & Postcards

Social Media Posts

Website Updates

Billboards

Enforcement Strategy

After a comprehensive educational campaign to the public with various City of Mesa departments and the school districts, enforcement deployments will begin

Enforcement efforts will be data-driven to specific areas with reported criminal damage to COM parks, high crash locations and reported violations of Mesa City Code and ARS

Enforcement efforts will include the traffic division and all five patrol divisions (patrol and specialty units)



Thank you

