



Design Review Board



DRB24-00546

SAIA

Josh Grandlienard, Senior Planner

February 11, 2025



Request

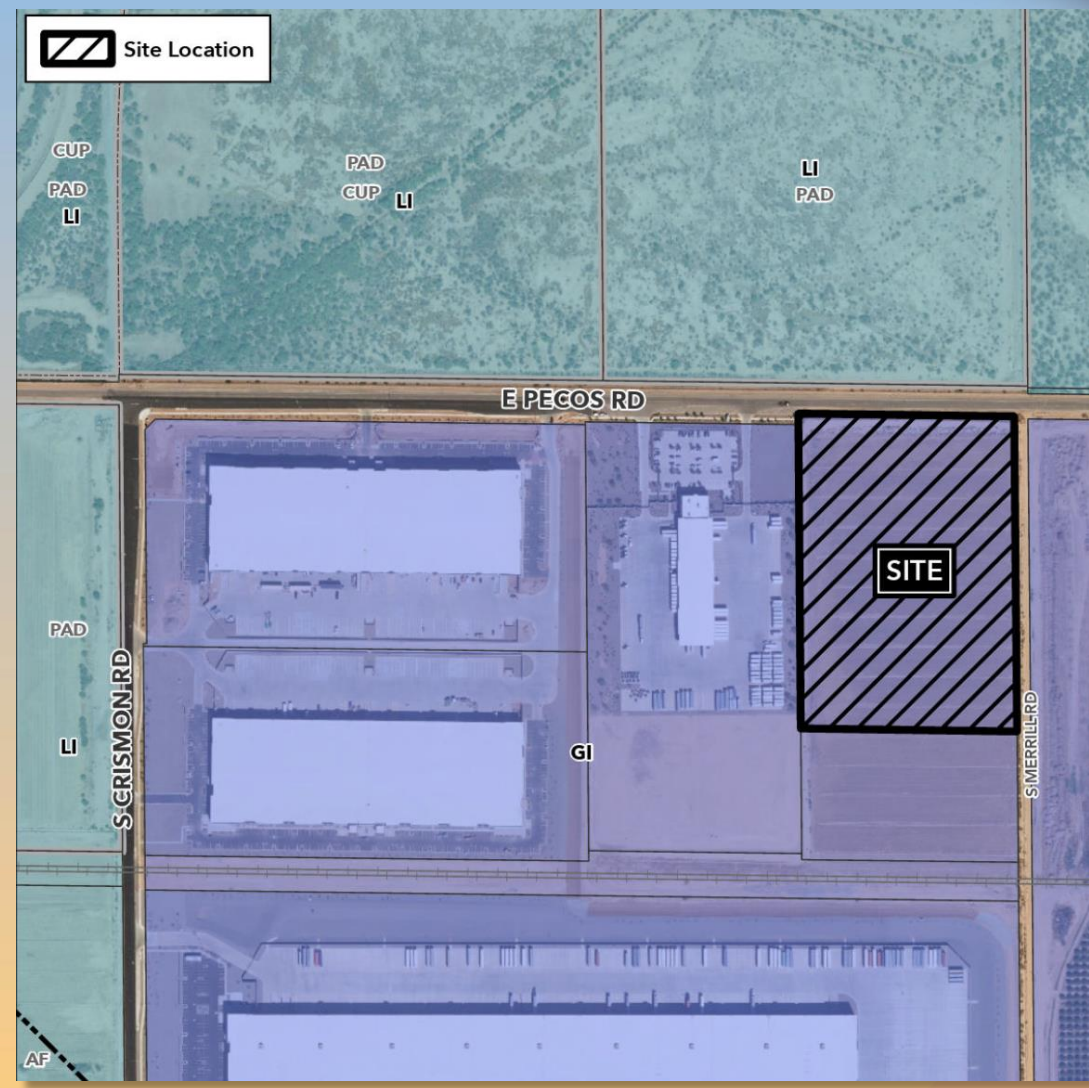
- Design Review
- To allow for a Freight/Truck Terminal and Warehouse





Location

- East of Crismon Road
- South side of Pecos Road





Site Photo

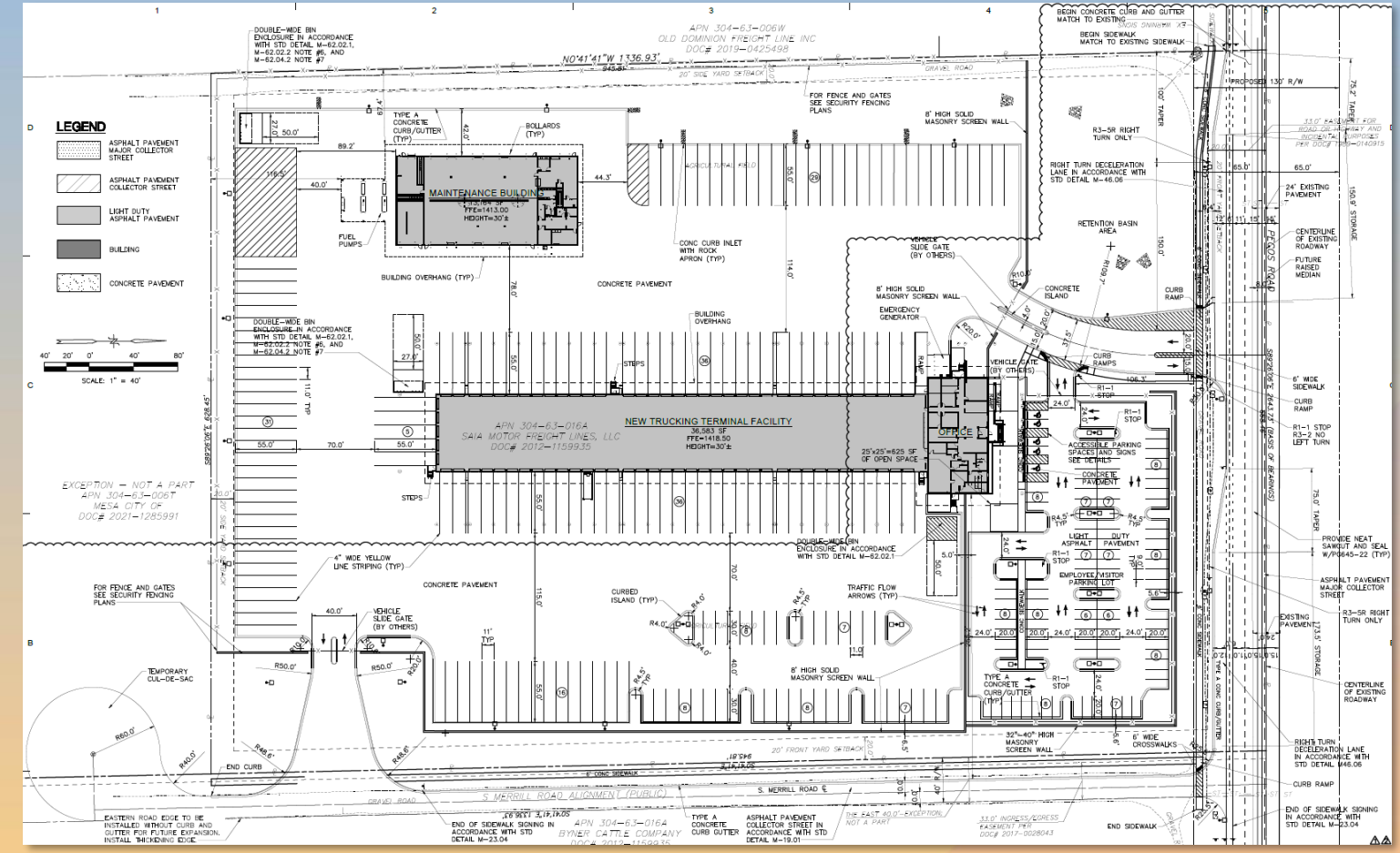


Looking south from Pecos Road



Site Plan

- 36,583 square foot Truck Terminal and associated 13,164 square foot Maintenance Building
- Vehicular access to the site is provided from Pecos Road



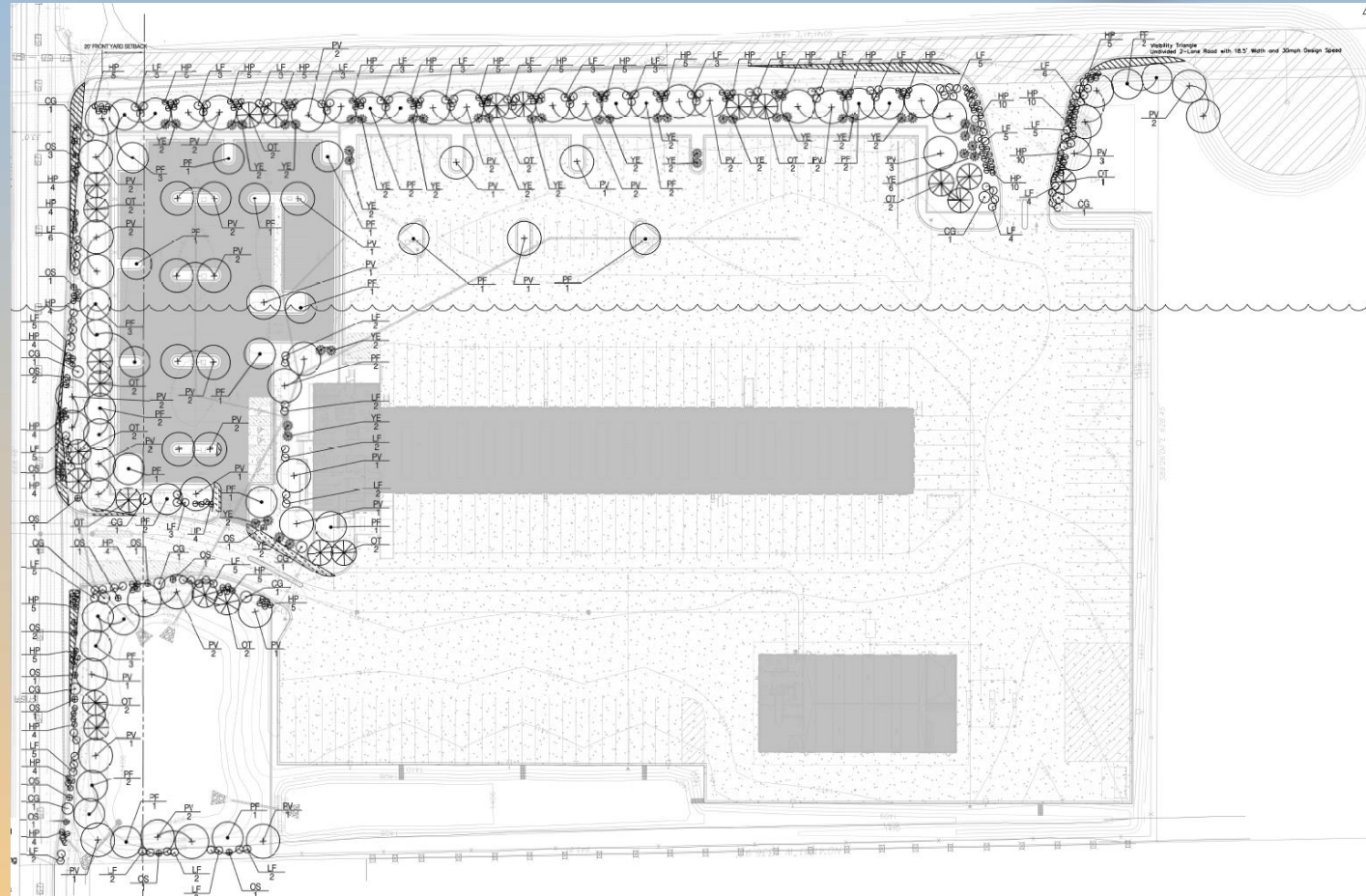


Landscape Plan

Planting Schedule

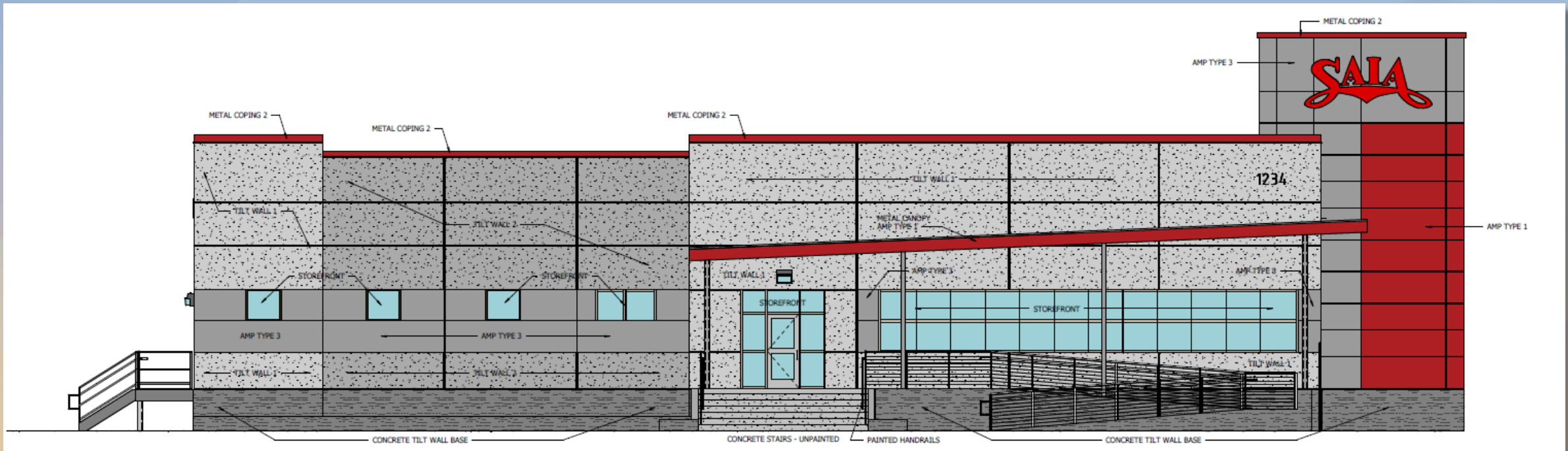
SAIA Mesa, Arizona

CODE	SCIENTIFIC NAME	COMMON NAME	SIZE	QUANTITY	SPACING
TREES & SHRUBS					
PF	<i>Parkinsonia florida</i>	Blue Palo Verde	36-Inch Box	35	As shown
PV	<i>Prosopis velutina</i>	Velvet Mesquite	24-Inch Box	55	As shown
OT	<i>Olneya tesota</i>	Desert Ironwood	24-Inch Box	23	As shown
LF	<i>Leucophyllum frutescens</i>	Texas Sage	5 GAL	119	As shown
CACTI & SUCCULENTS					
CG	<i>Carnegiea gigantea</i>	Saguaro	15 GAL	11	As shown
HP	<i>Hesperaloe parviflora</i>	Red Yucca	5 GAL / TOS	179	As shown
OS	<i>Opuntia santa-rita</i>	Santa Rita Prickly Pear	5 GAL / TOS	20	As shown
YE	<i>Yucca elata</i>	Soaptree yucca	5 GAL / TOS	44	As shown





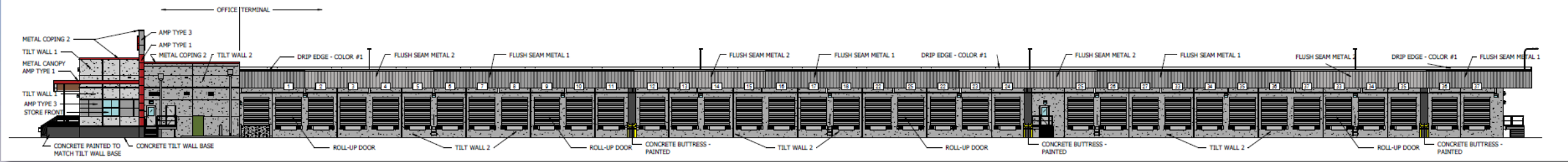
Building Elevations



FACADE FINISH CALCULATION		3,488 Sq.Ft.
TYPE 1 ARCHITECTURAL METAL WALL PANEL (AMP)	312 Sq.Ft. = (8.95)	9 %
TYPE 3 ARCHITECTURAL METAL WALL PANEL (AMP)	517 Sq.Ft. = (14.82)	15 %
CONCRETE TILT WALL 1	1,198 Sq.Ft. = (34.34)	34 %
CONCRETE TILT WALL 2	549 Sq.Ft. = (15.74)	16 %
CONCRETE TILT WALL BASE	401 Sq.Ft. = (11.50)	12 %
CONCRETE STAIRS	69 Sq.Ft. = (1.98)	2 %
METAL COPING 2	81 Sq.Ft. = (2.32)	2 %
STOREFRONT GLAZING SYSTEMS	363 Sq.Ft. = (10.39)	10 %
EXPOSED STEEL COLUMNS AT OFFICE	(28 Sq.Ft. LESS THAN 1 %)	
TOTAL		100%
METAL PANELS AND COPING		26%
CONCRETE		64%
STOREFRONT		10%



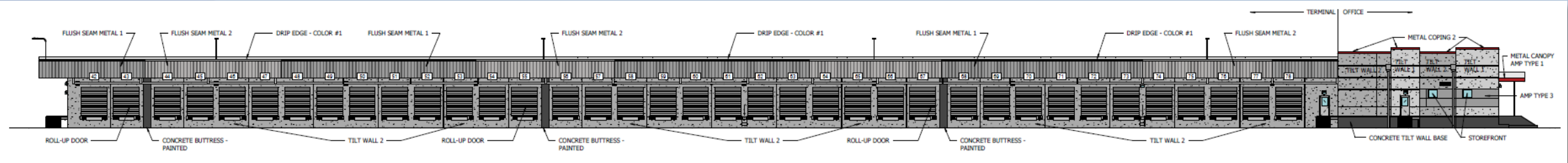
Building Elevations



FACADE FINISH COMBINED		12,073 Sq.Ft.
CONCRETE TILT WALL 1	332 Sq.Ft. =	3 %
CONCRETE TILT WALL 2	4,968 Sq.Ft. =	41 %
CONCRETE TILT WALL BASE	137 Sq.Ft. =	1 %
CONCRETE BUTTRESS	129 Sq.Ft. =	1 %
TYPE 1 ARCHITECTURAL METAL WALL PANEL (AMP)	74 Sq.Ft. =	1 %
TYPE 3 ARCHITECTURAL METAL WALL PANEL (AMP)	103 Sq.Ft. =	1 %
FLUSH SEAM METAL PANEL 1	1,549 Sq.Ft. =	13 %
FLUSH SEAM METAL PANEL 2	1,091 Sq.Ft. =	9 %
OVERHEAD STEEL DOORS - DOCK	3,330 Sq.Ft. =	28 %
STOREFRONT	37 Sq.Ft. =	(<1 %)
INSULATED STEEL (MAN) DOORS	63 Sq.Ft. =	(<1 %)
COPING & DRIP EDGE TRIM	260 Sq.Ft. =	2 %
<hr/>		
CONCRETE (PAINTED)	46 %	TOTAL 100%
METAL PANELS AND COPING	26 %	
STOREFRONT	(<1 %)	
DOORS	28 %	



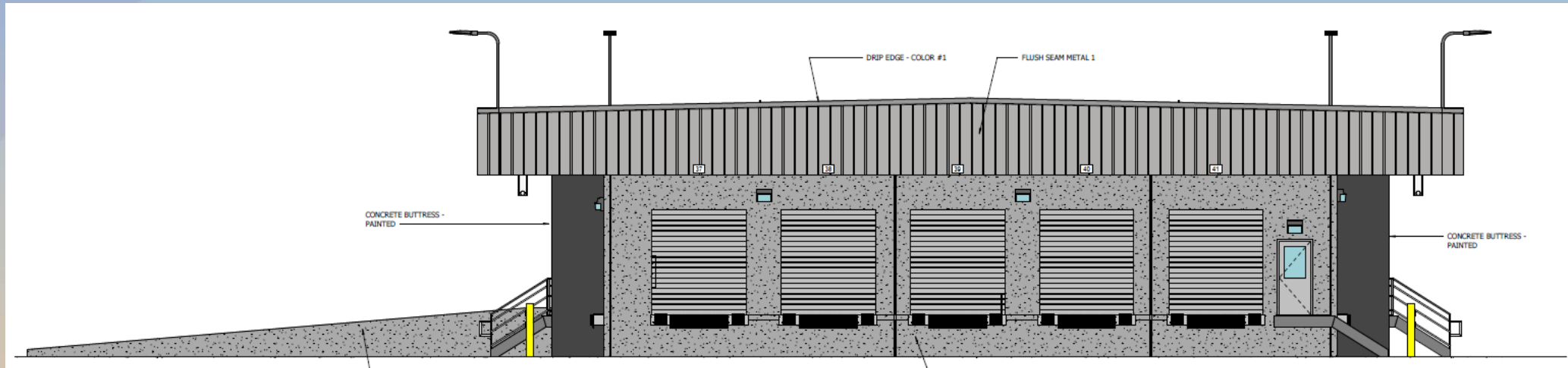
Building Elevations



FACADE FINISH COMBINED		12,058 Sq.Ft.
CONCRETE TILT WALL 1	469 Sq.Ft. =	5 %
CONCRETE TILT WALL 2	4,564 Sq.Ft. =	38 %
CONCRETE TILT WALL BASE	267 Sq.Ft. =	2 %
CONCRETE BUTTRESS	129 Sq.Ft. =	1 %
TYPE 1 ARCHITECTURAL METAL WALL PANEL (AMP)	10 Sq.Ft. =	<1 %
TYPE 3 ARCHITECTURAL METAL WALL PANEL (AMP)	145 Sq.Ft. =	1 %
FLUSH SEAM METAL PANEL 1	1,549 Sq.Ft. =	13 %
FLUSH SEAM METAL PANEL 2	1,091 Sq.Ft. =	9 %
OVERHEAD STEEL DOORS - ROCK	3,510 Sq.Ft. =	29 %
STOREFRONT	20 Sq.Ft. =	<1 %
INSULATED STEEL (MAN) DOORS	42 Sq.Ft. =	<1 %
COPING & DRIP EDGE TRIM	262 Sq.Ft. =	2 %
CONCRETE (PAINTED)	46 %	
METAL PANELS AND COPING	25 %	
STOREFRONT	<1 %	
DOORS	29 %	
TOTAL	100%	



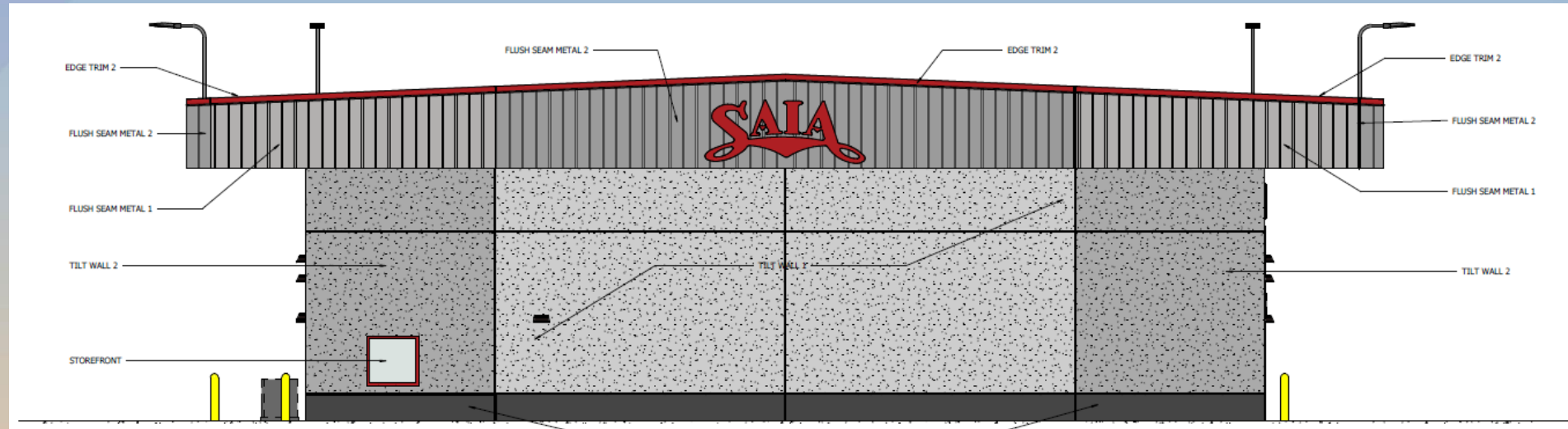
Building Elevations



FACADE FINISH CALCULATION		2,166 Sq.Ft.								
CONCRETE TILT WALL 2	744 Sq.Ft. =	35 %								
CONCRETE BUTTRESS	172 Sq.Ft. =	8 %								
CONCRETE RAMP (PAINTED)	138 Sq.Ft. =	6 %								
FLUSH SEAM METAL PANEL 1	593 Sq.Ft. =	27 %								
FLUSH SEAM METAL PANEL 2	0 Sq.Ft. =	0 %								
OVERHEAD STEEL DOORS - DOCK	450 Sq.Ft. =	21 %								
INSULATED STEEL (MAN) DOORS	21 Sq.Ft. =	1 %								
FASCIA & DRIP EDGE TRIM	48 Sq.Ft. =	2 %								
<table border="1"> <tr> <td>METAL PANELS AND COPING</td> <td>29 %</td> </tr> <tr> <td>CONCRETE</td> <td>49 %</td> </tr> <tr> <td>DOORS</td> <td>22 %</td> </tr> </table>		METAL PANELS AND COPING	29 %	CONCRETE	49 %	DOORS	22 %	<table border="1"> <tr> <td>TOTAL</td> <td>100%</td> </tr> </table>	TOTAL	100%
METAL PANELS AND COPING	29 %									
CONCRETE	49 %									
DOORS	22 %									
TOTAL	100%									



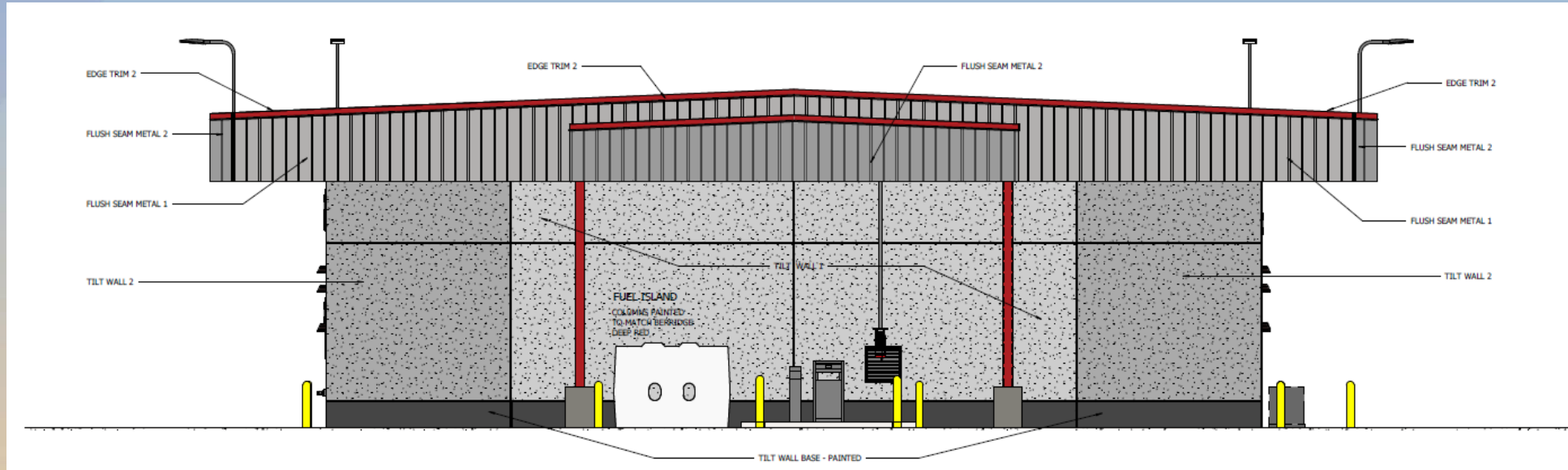
Building Elevations



FACADE FINISH CALCULATIONS		2,404 Sq.Ft.
CONCRETE TILT WALL 1	927 Sq.Ft. =	39 %
CONCRETE TILT WALL 2	590 Sq.Ft. =	25 %
CONCRETE TILT WALL BASE	179 Sq.Ft. =	7 %
LOUVER / VENT	0 Sq.Ft. =	0 %
FLUSH SEAM METAL PANEL 1	282 Sq.Ft. =	12 %
FLUSH SEAM METAL PANEL 2	357 Sq.Ft. =	15 %
OVERHEAD STEEL DOORS	0 Sq.Ft. =	0 %
STOREFRONT	18 Sq.Ft. =	<1 %
INSULATED STEEL (MAN) DOORS	0 Sq.Ft. =	0 %
COPING & DRIP EDGE TRIM	51 Sq.Ft. =	2 %
TPO ROOF	0 Sq.Ft. =	0 %
CONCRETE (PAINTED)	71 %	
METAL PANELS AND COPING	29 %	
STOREFRONT	<1 %	
DOORS	0 %	
LOUVER / VENT	0 %	
TPO ROOF	0 %	
TOTAL		100%



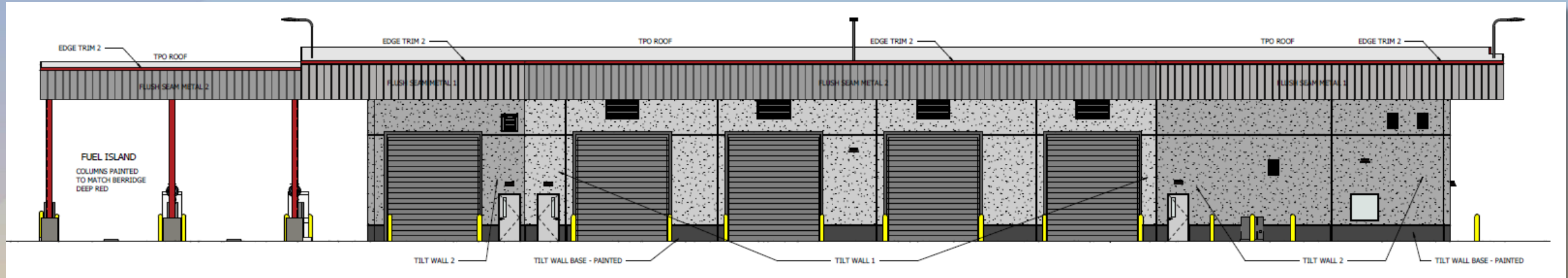
Building Elevations



FACADE FINISH CALCULATIONS		2,404 Sq.Ft.
CONCRETE TILT WALL 1	927 Sq.Ft. =	39 %
CONCRETE TILT WALL 2	608 Sq.Ft. =	25 %
CONCRETE TILT WALL BASE	179 Sq.Ft. =	7 %
LOUVER / VENT	0 Sq.Ft. =	0 %
FLUSH SEAM METAL PANEL 1	412 Sq.Ft. =	17 %
FLUSH SEAM METAL PANEL 2	207 Sq.Ft. =	9 %
OVERHEAD STEEL DOORS	0 Sq.Ft. =	0 %
STOREFRONT	0 Sq.Ft. =	0 %
INSULATED STEEL (MAN) DOORS	0 Sq.Ft. =	0 %
COPING & DRIP EDGE TRIM	71 Sq.Ft. =	3 %
TPO ROOF	0 Sq.Ft. =	0 %
CONCRETE (PAINTED)	71 %	
METAL PANELS AND COPING	28 %	
STOREFRONT	0.5%	
DOORS	0.5%	
LOUVER / VENT	0.5%	
TPO ROOF	0.5%	
TOTAL	100%	



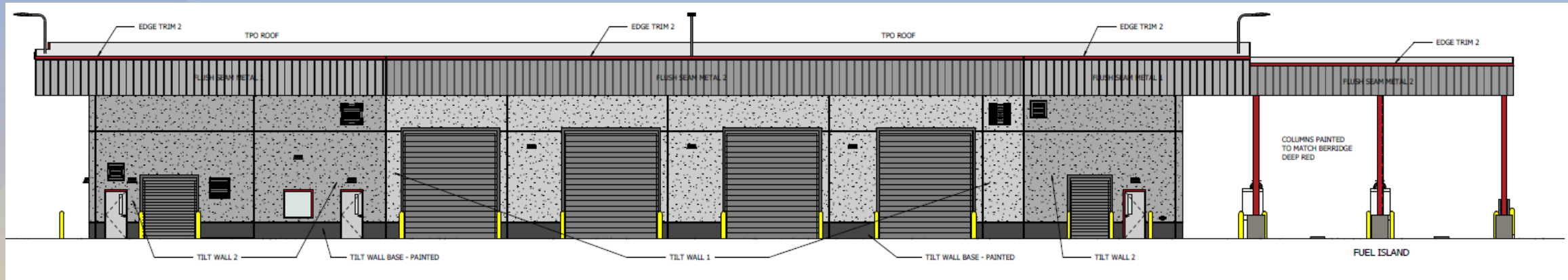
Building Elevations



FACADE FINISH CALCULATIONS		5,117 Sq.Ft.
CONCRETE TILT WALL 1	964 Sq. Ft. =	19 %
CONCRETE TILT WALL 2	1,059 Sq. Ft. =	21 %
CONCRETE TILT WALL BASE	190 Sq. Ft. =	4 %
LOUVER / VENT	60 Sq. Ft. =	1 %
FLUSH SEAM METAL PANEL 1	460 Sq. Ft. =	9 %
FLUSH SEAM METAL PANEL 2	680 Sq. Ft. =	13 %
OVERHEAD STEEL DOORS - DOCK	1,120 Sq. Ft. =	22 %
STOREFRONT	15 Sq. Ft. =	<1 %
INSULATED STEEL (MAN) DOORS	63 Sq. Ft. =	1 %
COPING & DRIP EDGE TRIM	132 Sq. Ft. =	2 %
TPO ROOF	394 Sq. Ft. =	8 %
CONCRETE (PAINTED)	44 %	TOTAL 100%
METAL PANELS AND COPING	24 %	
STOREFRONT	<1 %	
DOORS	22 %	
LOUVER / VENT	1 %	
TPO ROOF	8 %	



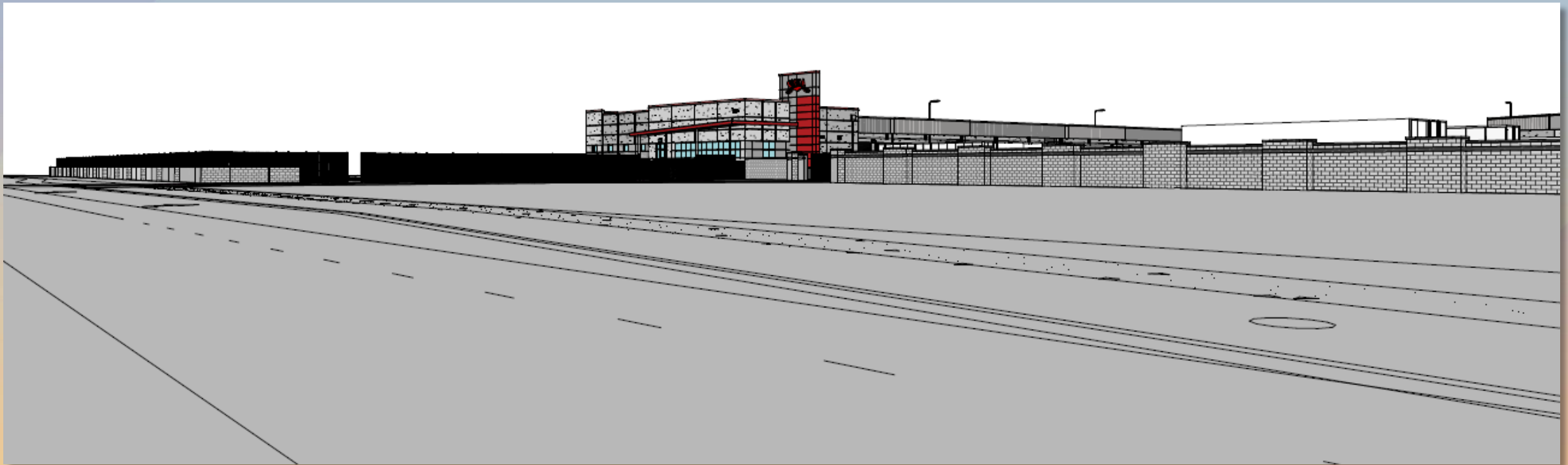
Building Elevations



FACADE FINISH CALCULATIONS		5,117 Sq.Ft.
CONCRETE TILT WALL 1	1,027 Sq.Ft. =	20 %
CONCRETE TILT WALL 2	1,110 Sq.Ft. =	22 %
CONCRETE TILT WALL BASE	190 Sq.Ft. =	4 %
LOUVER / VENT	44 Sq.Ft. =	1 %
FLUSH SEAM METAL PANEL 1	460 Sq.Ft. =	9 %
FLUSH SEAM METAL PANEL 2	680 Sq.Ft. =	13 %
OVERHEAD STEEL DOORS - DOCK	1,022 Sq.Ft. =	20 %
STOREFRONT	15 Sq.Ft. =	(<1 %)
INSULATED STEEL (MAN) DOORS	63 Sq.Ft. =	1 %
COPING & DRIP EDGE TRIM	112 Sq.Ft. =	2 %
TPO ROOF	394 Sq.Ft. =	8 %
CONCRETE (PAINTED)		46 %
METAL PANELS AND COPING		24 %
STOREFRONT		(<1 %)
DOORS		21 %
LOUVER / VENT		1 %
TPO ROOF		8 %
TOTAL		100%



Site Rendering





Site Rendering



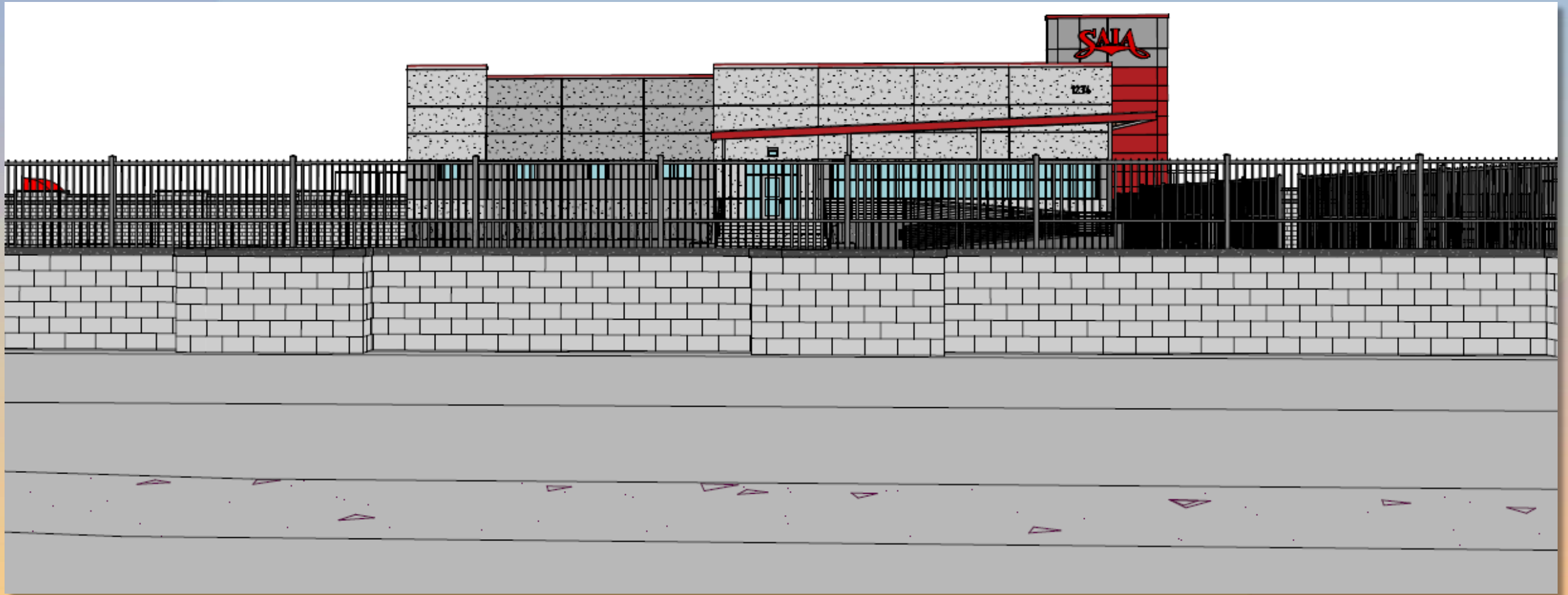


Site Rendering





Site Rendering





Colors and Materials



ALPOLIC TOR RED



ALPOLIC TXG GREY



ALPOLIC RRM RIVER ROCK GREY



ALPOLIC BSM SLATE BLACK



SW 7017 DORIAN GRAY



SW 7019 GAUNTLET GRAY



SW 7069 IRON ORE



SW 4084 SAFETY YELLOW



SW 7063 NEBULOUS WHITE



BERRIDGE CITYSCAPE



BERRIDGE ZINC GREY



BERRIDGE DEEP RED



OVERHEAD DOOR SILHOUETTE GRAY



PPG ATLANTICA GLASS



CLEAR ANODIZED ALUMINUM



HOT DIPPED GALVANIZED STEEL



Alternative Compliance

- ✓ Materials. Facades shall incorporate at least 3 different materials
- ✓ Materials. No more than 50% of the façade may be covered with one single material



Findings

Staff is seeking your review and recommendation on the following:

- ✓ Proposed building elevations and landscape design
- ✓ Proposed alternative compliance

Staff welcomes any feedback



Design Review Board