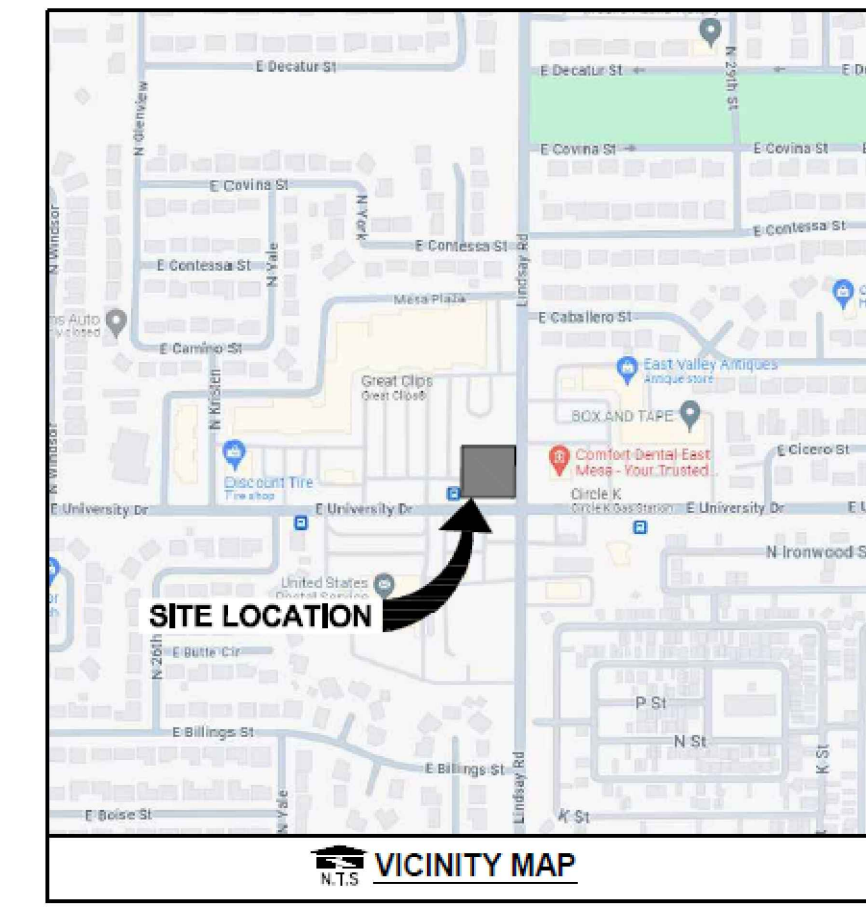


# DUTCH BROS. COFFEE - MESA, AZ - AZ1601



## PLANT SCHEDULE

SYMBOL	BOTANICAL / COMMON NAME	SIZE	CAL	HEIGHT	QTY
<b>TREES</b>					
	ACACIA ANEURA MULGA	24" BOX	2" CAL	8'-10'	13
	ACACIA ANEURA MULGA	36" BOX	2.5" CAL	10'-12'	4
	ACACIA SALICINA WILLOW ACACIA	15 GAL	1.5" CAL	8' MIN.	6
	ACACIA SALICINA WILLOW ACACIA	24" BOX	2" CAL	8'-10'	6
	FRAXINUS VELUTINA 'FAN-TEK' FAN-TEK VELVET ASH	24" BOX	2" CAL	8'-10'	8
	PISTACIA X 'RED PUSH' RED PUSH PISTACHE	24" BOX	2" CAL	8'-10'	5
	PISTACIA X 'RED PUSH' RED PUSH PISTACHE	36" BOX	2.5" CAL	10'-12'	1
<b>SHRUBS</b>					
	BACCHARIS X 'CENTENNIAL' CENTENNIAL COYOTE BRUSH	5 GAL		60" o.c.	142
	BIGNONIA CAPREOLATA CROSS VINE	5 GAL		48" o.c.	8
	HESPERALOE PARVIFLORA RED YUCCA	5 GAL		30" o.c.	6
	LEUCOPHYLLUM LANGMANIAE 'LYNN'S LEGACY' LYNN'S LEGACY LANGMAN'S SAGE	5 GAL		60" o.c.	11
	MUHLENBERGIA CAPILLARIS PINK MUHLY GRASS	5 GAL		48" o.c.	54
	MUHLENBERGIA RIGENS DEER GRASS	5 GAL		60" o.c.	81
	MYRICA CERIFERA WAX MYRTLE	5 GAL		84" o.c.	13
	PENNISETUM SETACEUM 'DWARF RUBRUM' DWARF PURPLE FOUNTAIN GRASS	5 GAL		30" o.c.	51

## GENERAL GRADING AND PLANTING NOTES

- BY SUBMITTING A PROPOSAL FOR THE LANDSCAPE PLANTING SCOPE OF WORK, THE CONTRACTOR CONFIRMS THAT HE HAS READ, AND WILL COMPLY WITH, THE ASSOCIATED NOTES, SPECIFICATIONS, AND DETAILS WITH THIS PROJECT.
- THE GENERAL CONTRACTOR IS RESPONSIBLE FOR REMOVING ALL EXISTING VEGETATION (EXCEPT WHERE NOTED TO REMAIN).
- IN THE CONTEXT OF THESE PLANS, NOTES, AND SPECIFICATIONS, "FINISH GRADE" REFERS TO THE FINAL ELEVATION OF THE SOIL SURFACE (NOT TOP OF MULCH) AS INDICATED ON THE GRADING PLANS.
  - BEFORE STARTING WORK, THE LANDSCAPE CONTRACTOR SHALL VERIFY THAT THE ROUGH GRADES OF ALL LANDSCAPE AREAS ARE WITHIN +/-0.1' OF FINISH GRADE. SEE SPECIFICATIONS FOR MORE DETAILED INSTRUCTIONS ON TURF AREA AND PLANTING BED PREPARATION.
  - CONSTRUCT AND MAINTAIN FINISH GRADES AS SHOWN ON GRADING PLANS, AND CONSTRUCT AND MAINTAIN SLOPES AS RECOMMENDED BY THE GEOTECHNICAL REPORT. ALL LANDSCAPE AREAS SHALL HAVE POSITIVE DRAINAGE AWAY FROM STRUCTURES AT THE MINIMUM SLOPE SPECIFIED IN THE REPORT AND ON THE GRADING PLANS, AND AREAS OF POTENTIAL PONDING SHALL BE REGRADED TO BLEND IN WITH THE SURROUNDING GRADES AND ELIMINATE PONDING POTENTIAL.
  - THE LANDSCAPE CONTRACTOR SHALL DETERMINE WHETHER OR NOT THE EXPORT OF ANY SOIL WILL BE NEEDED, TAKING INTO ACCOUNT THE ROUGH GRADE PROVIDED, THE AMOUNT OF SOIL AMENDMENTS TO BE ADDED (BASED ON A SOIL TEST, PER SPECIFICATIONS), AND THE FINISH GRADES TO BE ESTABLISHED.
  - ENSURE THAT THE FINISH GRADE IN SHRUB AREAS IMMEDIATELY ADJACENT TO WALKS AND OTHER WALKING SURFACES, AFTER INSTALLING SOIL AMENDMENTS, IS 3" BELOW THE ADJACENT FINISH SURFACE, IN ORDER TO ALLOW FOR PROPER MULCH DEPTH. TAPER THE SOIL SURFACE TO MEET FINISH GRADE, AS SPECIFIED ON THE GRADING PLANS, AT APPROXIMATELY 18" AWAY FROM THE WALKS.
  - ENSURE THAT THE FINISH GRADE IN TURF AREAS IMMEDIATELY ADJACENT TO WALKS AND OTHER WALKING SURFACES, AFTER INSTALLING SOIL AMENDMENTS, IS 1" BELOW THE FINISH SURFACE OF THE WALKS. TAPER THE SOIL SURFACE TO MEET FINISH GRADE, AS SPECIFIED ON THE GRADING PLANS, AT APPROXIMATELY 18" AWAY FROM THE WALKS.
  - SHOULD ANY CONFLICTS AND/OR DISCREPANCIES ARISE BETWEEN THE GRADING PLANS, GEOTECHNICAL REPORT, THESE NOTES AND PLANS, AND ACTUAL CONDITIONS, THE CONTRACTOR SHALL IMMEDIATELY BRING SUCH ITEMS TO THE ATTENTION OF THE LANDSCAPE ARCHITECT, GENERAL CONTRACTOR, AND OWNER.
- ALL PLANT LOCATIONS ARE DIAGRAMMATIC. ACTUAL LOCATIONS SHALL BE VERIFIED WITH THE LANDSCAPE ARCHITECT OR DESIGNER PRIOR TO PLANTING. THE LANDSCAPE CONTRACTOR SHALL ENSURE THAT ALL REQUIREMENTS OF THE PERMITTING AUTHORITY ARE MET (I.E. MINIMUM PLANT QUANTITIES, PLANTING METHODS, TREE PROTECTION METHODS, ETC.).
  - THE LANDSCAPE CONTRACTOR IS RESPONSIBLE FOR DETERMINING PLANT QUANTITIES; PLANT QUANTITIES SHOWN ON LEGENDS AND CALLOUTS ARE FOR GENERAL INFORMATION ONLY. IN THE EVENT OF A DISCREPANCY BETWEEN THE PLAN AND THE PLANT LEGEND, THE PLANT QUANTITY AS SHOWN ON THE PLAN (FOR INDIVIDUAL SYMBOLS) OR CALLOUT (FOR GROUNDCOVER PATTERNS) SHALL TAKE PRECEDENCE.
  - NO SUBSTITUTIONS OF PLANT MATERIALS SHALL BE ALLOWED WITHOUT THE WRITTEN PERMISSION OF THE LANDSCAPE ARCHITECT.** IF SOME OF THE PLANTS ARE NOT AVAILABLE, THE LANDSCAPE CONTRACTOR SHALL NOTIFY THE LANDSCAPE ARCHITECT IN WRITING (VIA PROPER CHANNELS).
  - THE CONTRACTOR SHALL, AT A MINIMUM, PROVIDE REPRESENTATIVE PHOTOS OF ALL PLANTS PROPOSED FOR THE PROJECT. THE CONTRACTOR SHALL ALLOW THE LANDSCAPE ARCHITECT AND THE OWNER/OWNER'S REPRESENTATIVE TO INSPECT, AND APPROVE OR REJECT, ALL PLANTS DELIVERED TO THE JOBSITE. REFER TO SPECIFICATIONS FOR ADDITIONAL REQUIREMENTS FOR SUBMITTALS.
- THE CONTRACTOR SHALL MAINTAIN THE LANDSCAPE IN A HEALTHY CONDITION FOR 90 DAYS AFTER ACCEPTANCE BY THE OWNER. REFER TO SPECIFICATIONS FOR CONDITIONS OF ACCEPTANCE FOR THE START OF THE MAINTENANCE PERIOD, AND FOR FINAL ACCEPTANCE AT THE END OF THE MAINTENANCE PERIOD.
- SEE SPECIFICATIONS AND DETAILS FOR FURTHER REQUIREMENTS.

## IRRIGATION CONCEPT

- AN AUTOMATIC IRRIGATION SYSTEM SHALL BE INSTALLED AND OPERATIONAL BY THE TIME OF FINAL INSPECTION. THE ENTIRE IRRIGATION SYSTEM SHALL BE INSTALLED BY A LICENSED AND QUALIFIED IRRIGATION CONTRACTOR.
- THE IRRIGATION SYSTEM WILL OPERATE ON POTABLE WATER, AND THE SYSTEM WILL HAVE APPROPRIATE BACKFLOW PREVENTION DEVICES INSTALLED TO PREVENT CONTAMINATION OF THE POTABLE SOURCE.
- ALL NON-TURF PLANTED AREAS SHALL BE DRIP IRRIGATED. SODDED AND SEEDED AREAS SHALL BE IRRIGATED WITH SPRAY OR ROTOR HEADS AT 100% HEAD-TO-HEAD COVERAGE.
- ALL PLANTS SHARING SIMILAR HYDROZONE CHARACTERISTICS SHALL BE PLACED ON A VALVE DEDICATED TO PROVIDE THE NECESSARY WATER REQUIREMENTS SPECIFIC TO THAT HYDROZONE.
- THE IRRIGATION SYSTEM SHALL BE DESIGNED AND INSTALLED, TO THE MAXIMUM EXTENT POSSIBLE, TO CONSERVE WATER BY USING THE FOLLOWING DEVICES AND SYSTEMS: MATCHED PRECIPITATION RATE TECHNOLOGY ON ROTOR AND SPRAY HEADS (WHEREVER POSSIBLE), RAIN SENSORS, AND MULTI-PROGRAM COMPUTERIZED IRRIGATION CONTROLLERS FEATURING SENSORY INPUT CAPABILITIES.

## LANDSCAPE CALCULATIONS

GENERAL CALCULATIONS:	INTERIOR PERIMETER LANDSCAPE
LOT AREA:	35,974 SF
LANDSCAPE AREA REQUIRED:	7,158 SF (20% REQUIRED)
LANDSCAPE AREA PROVIDED:	17,843 SF
PEDESTRIAN WALKWAYS SHADED:	50% PROVIDED
LIVE PLANT MATERIAL COVERAGE:	50% PROVIDED
<b>PARKING LOT LANDSCAPE</b>	
PARKING SPACES PROPOSED:	13 SPACES
PARKING LOT AREA:	2,253 SF
PARKING LOT LANDSCAPE PROVIDED:	2,238 SF
<b>PARKING ISLANDS PROVIDED:</b>	
PARKING TREES REQUIRED:	6 TREES (1 PER ISLAND)
PARKING ISLAND TREES PROVIDED:	6 TREES PROVIDED
24" BOX TREES MINIMUM:	1 36" BOX TREE (10%)
36" BOX TREES REQUIRED:	1 36" BOX TREE
36" BOX TREES PROVIDED:	18 SHRUBS (3 PER ISLAND)
PARKING ISLAND SHRUBS REQUIRED:	18 SHRUBS
PARKING ISLAND SHRUBS PROVIDED:	18 SHRUBS
<b>PERIMETER LANDSCAPE</b>	
E UNIVERSITY DRIVE:	200'-1"
TREES REQUIRED:	8.0 TREES (1 PER 25')
TREES PROVIDED:	8 TREES
SHRUBS REQUIRED:	48 SHRUBS (6 PER REQUIRED TREE)
SHRUBS PROVIDED:	61 SHRUBS
LINDSAY ROAD:	180'-6"
TREES REQUIRED:	7.2 TREES (1 PER 25')
TREES PROVIDED:	7 TOTAL (3 EXISTING + 4 TREES)
SHRUBS REQUIRED:	42 SHRUBS (6 PER REQUIRED TREE)
SHRUBS PROVIDED:	48 SHRUBS
<b>TOTAL PERIMETER TREES:</b>	
15 GALLON MINIMUM:	ALL TREES GREATER THAN 15G
24" BOX TREES REQUIRED:	6 24" BOX TREES (50%)
24" BOX TREES PROVIDED:	9 24" BOX TREES
36" BOX TREES REQUIRED:	3 36" BOX TREES (25%)
36" BOX TREES PROVIDED:	3 36" BOX TREES
<b>DRIVE THROUGH SCREENING ADDITIONAL LANDSCAPE</b>	
LINDSAY ROAD:	180'-6"
TREES REQUIRED:	7.2 TREES (1 PER 25')
TREES PROVIDED:	7 TREES
SHRUBS REQUIRED:	14 SHRUBS (2 PER TREE)
SHRUBS PROVIDED:	14 SHRUBS
UNIVERSITY ROAD:	58'-4"
TREES REQUIRED:	2.3 TREES (1 PER 25')
TREES PROVIDED:	2 TREES
SHRUBS REQUIRED:	4 SHRUBS (2 PER TREE)
SHRUBS PROVIDED:	4 SHRUBS
<b>FOUNDATION LANDSCAPE</b>	
TOTAL FOUNDATION LENGTH:	166'-8"
TREES REQUIRED:	3.3 TREES (1 PER 50')
TREES PROVIDED:	3 TREES
24" BOX TREES MINIMUM:	PROVIDED
36" BOX TREES REQUIRED:	1 36" BOX TREE (10%)
36" BOX TREES PROVIDED:	1 36" BOX TREE
LANDSCAPE FOUNDATION REQUIRED:	41' OF LANDSCAPE (25%)
LANDSCAPE FOUNDATION PROVIDED:	160'-8" OF LANDSCAPE

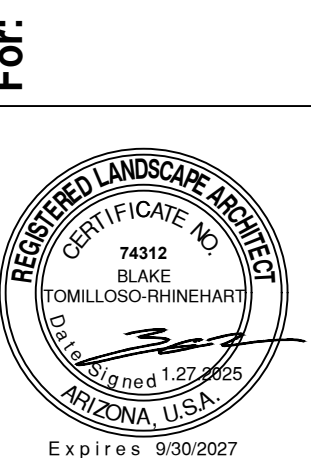
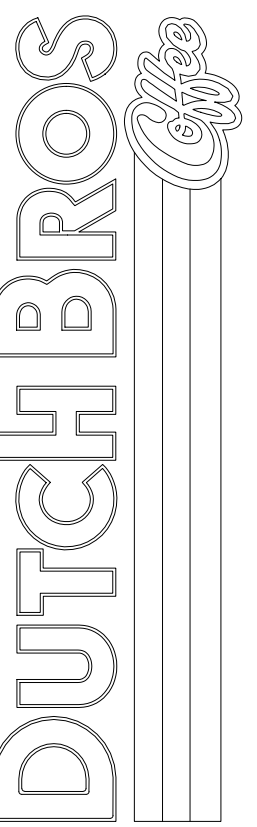
## MULCHES

AFTER ALL PLANTING IS COMPLETE, CONTRACTOR SHALL INSTALL 2" THICK LAYER OF ¾" CRUSHED ROCK TO MATCH ADJACENT DEVELOPMENT, OVER LANDSCAPE FABRIC IN ALL PLANTING AREAS (EXCEPT FOR TURF AND SEEDED AREAS). CONTRACTOR SHALL SUBMIT SAMPLES OF ALL MULCHES TO LANDSCAPE ARCHITECT AND OWNER FOR APPROVAL PRIOR TO CONSTRUCTION. ABSOLUTELY NO EXPOSED GROUND SHALL BE LEFT SHOWING ANYWHERE ON THE PROJECT AFTER MULCH HAS BEEN INSTALLED (SUBJECT TO THE CONDITIONS AND REQUIREMENTS OF THE "GENERAL GRADING AND PLANTING NOTES" AND SPECIFICATIONS).

## ROOT BARRIERS

THE CONTRACTOR SHALL INSTALL ROOT BARRIERS NEAR ALL NEWLY-PLANTED TREES THAT ARE LOCATED WITHIN FIVE (5) FEET OF PAVING OR CURBS. ROOT BARRIERS SHALL BE "CENTURY" OR "DEEP-ROOT" 24" DEEP PANELS (OR EQUAL). BARRIERS SHALL BE LOCATED IMMEDIATELY ADJACENT TO HARDSCAPE. INSTALL PANELS PER MANUFACTURER'S RECOMMENDATIONS. UNDER NO CIRCUMSTANCES SHALL THE CONTRACTOR USE ROOT BARRIERS OF A TYPE THAT COMPLETELY ENCIRCLE THE ROOTBALL.

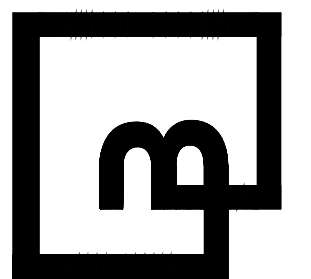
Title: LANDSCAPE PLANTING COVER SHEET  
NWC OF E UNIVERSITY DR AND LINDSAY RD  
MESA, AZ



Scale: Horizontal Vertical

Designed: \_\_\_\_\_  
Drawn: \_\_\_\_\_  
Checked: \_\_\_\_\_  
Approved: \_\_\_\_\_  
Date: 07/30/24

**Barghausen Consulting Engineers, Inc.**  
18215 72nd Avenue South  
Kent, WA 98032  
425.251.6222 [barghausen.com](http://barghausen.com)



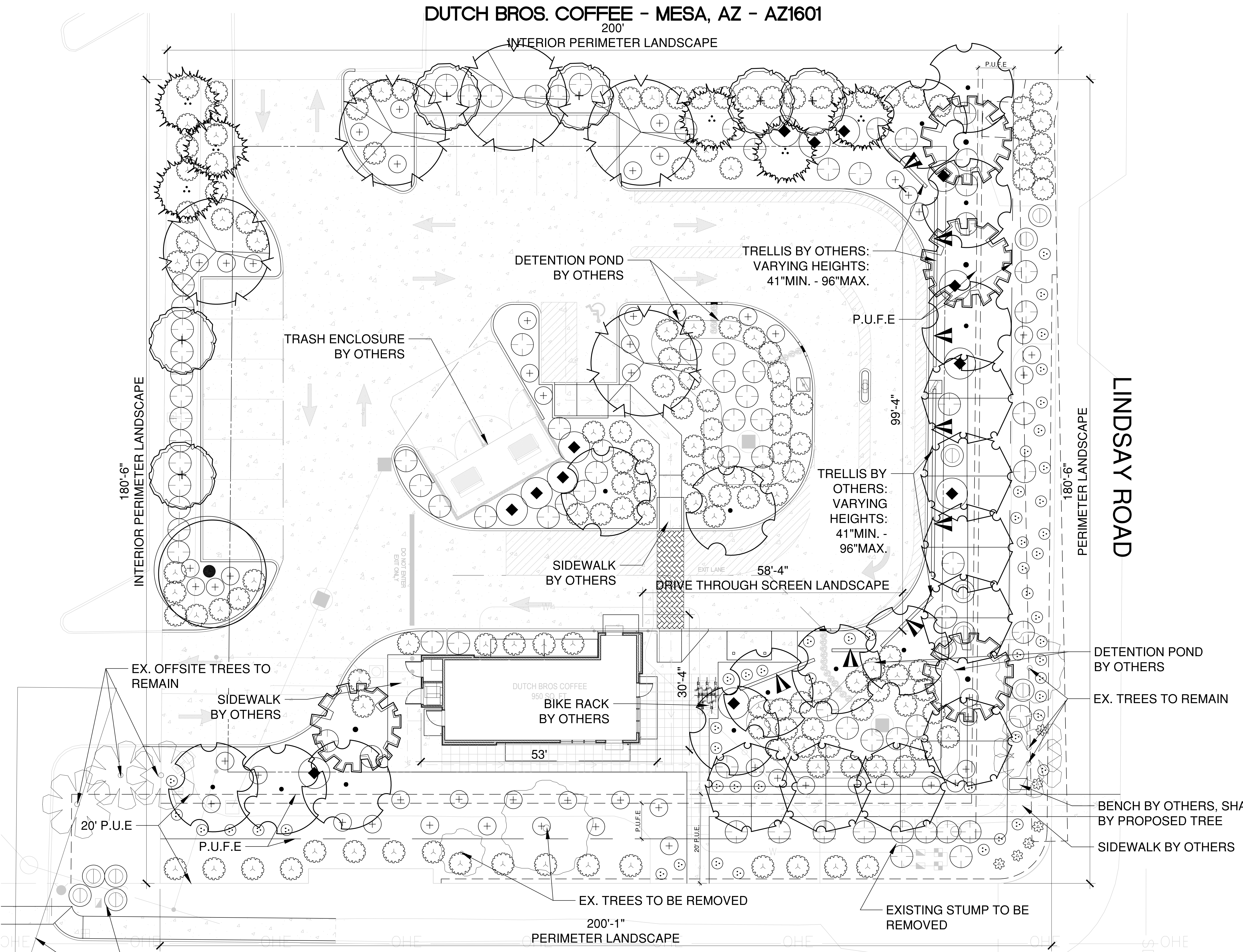
Job Number: 23429  
Sheet: LP-0  
2019 DB, LLC



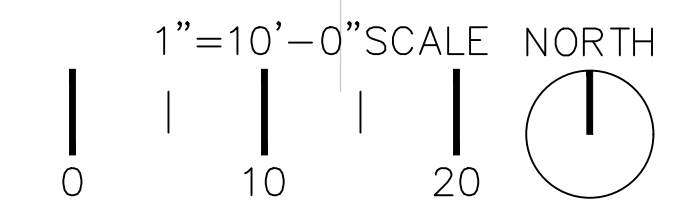
PRELIMINARY NOT FOR CONSTRUCTION

"The name DUTCH BROS. and all associated logos, distinctive designs, content, information, and other materials featured, displayed, contained herein, and made available by Dutch Bros., including but not limited to, the "look and feel" of the establishments and products, all text, images, colors, configurations, graphics, designs, illustrations, photographs, and pictures (collectively, the "materials") are owned by and/or licensed by DB Franchising USA, LLC and are protected by copyright, trademark, trade dress, patent, and/or other intellectual property rights under the United States and foreign laws."

\*The name DUTCH BROS. and all associated logos, distinctive designs, content, information, and other materials featured, displayed, and made available by Dutch Bros., including but not limited to, the "look and feel" of the establishments and products, all text, images, colors, configurations, graphics, designs, illustrations, photographs, and pictures (collectively, the "materials") are owned by and/or licensed by DB Franchising USA, LLC and are protected by copyright, trademark, trade dress, patent, and/or other intellectual property rights and unfair competition laws under the United States and foreign laws.\*



**DUTCH BROS. COFFEE - MESA, AZ - AZ1601**  
 200'  
 INTERIOR PERIMETER LANDSCAPE  
 INTERIOR PERIMETER LANDSCAPE  
 DETENTION POND BY OTHERS  
 TRASH ENCLOSURE BY OTHERS  
 TRELIS BY OTHERS: VARYING HEIGHTS: 41"MIN. - 96"MAX.  
 P.U.F.E.  
 TRELIS BY OTHERS: VARYING HEIGHTS: 41"MIN. - 96"MAX.  
 PERIMETER LANDSCAPE  
 LINDSAY ROAD  
 PERIMETER LANDSCAPE  
 EX. OFFSITE TREES TO REMAIN  
 SIDEWALK BY OTHERS  
 BIKE RACK BY OTHERS  
 53'  
 30'-4"  
 DRIVE THROUGH SCREEN LANDSCAPE  
 58'-4"  
 SIDEWALK BY OTHERS  
 DETENTION POND BY OTHERS  
 EX. TREES TO REMAIN  
 BENCH BY OTHERS, SHADED BY PROPOSED TREE  
 SIDEWALK BY OTHERS  
 EX. TREES TO BE REMOVED  
 200'-1"  
 PERIMETER LANDSCAPE  
 EXISTING STUMP TO BE REMOVED  
 20' P.U.F.E.  
 P.U.F.E.  
 20' P.U.F.E.  
 PLACE SHRUBS TO SCREEN RELOCATED BACKFLOW  
 SIGHT VISIBILITY TRIANGLE  
**E UNIVERSITY DRIVE**  
**PRELIMINARY NOT FOR CONSTRUCTION**



Job Number <b>23429</b>	Sheet <b>LP-1</b> <small>2019 DB, LLC          Preceding</small>	<b>Barghausen Consulting Engineers, Inc.</b> 18215 72nd Avenue South Kent, WA 98032 425.251.6222 <a href="http://barghausen.com">barghausen.com</a>	Title: <b>LANDSCAPE PLANTING PLAN</b> For: <b>NWC OF E UNIVERSITY DR AND LINDSAY RD          MESA, AZ</b>
Scale: Horizontal Vertical		Designed _____ Drawn _____ Checked _____ Approved _____ Date 07/30/24	
		For:	

