



# Design Review Board



# DRB24-00194

# Red Hawk HUB

Cassidy Welch, Senior Planner

April 9, 2024



# Request

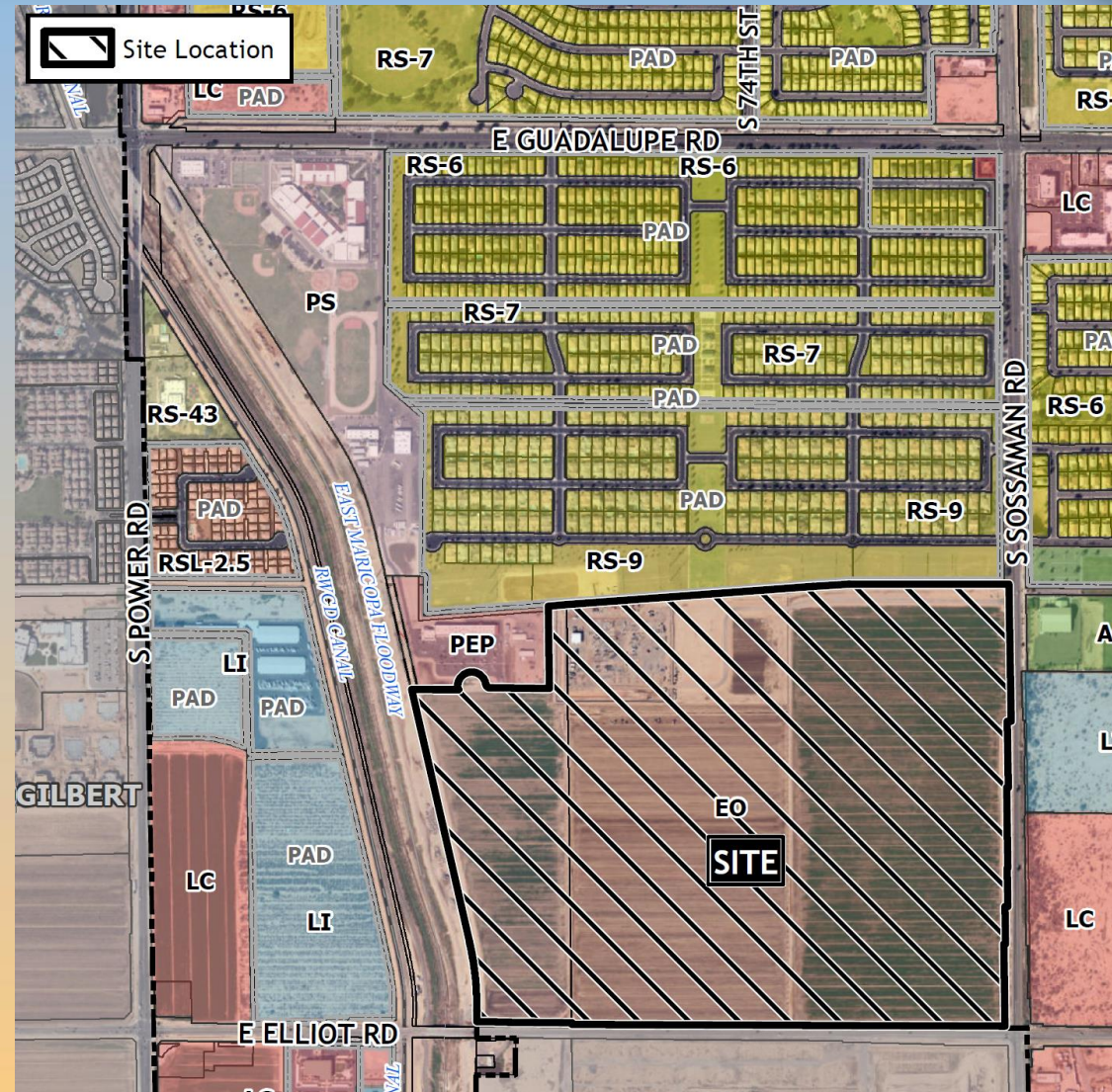
- Design Review
- To allow for an office development





# Location

- North of Elliot Road
- West of Sossaman Road





# Zoning

- Employment Opportunity (EO)
- Includes specific Design Guidelines for Red Hawk
  - Modulation
  - Enhanced entrances
  - Desert tones
  - Enhanced





# Site Photo



Looking north from Elliot Road



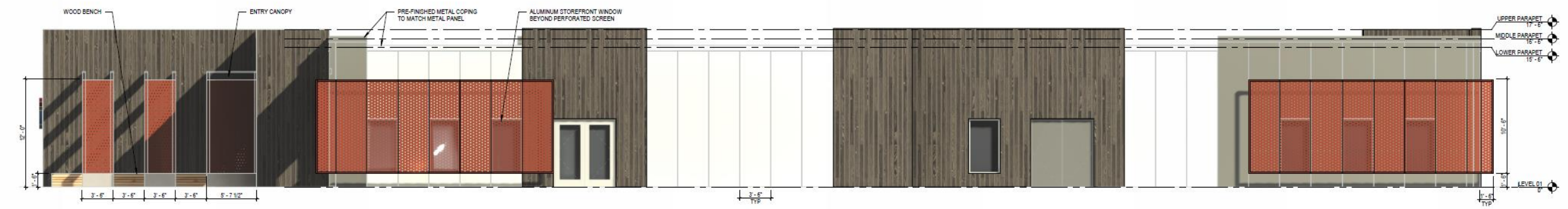




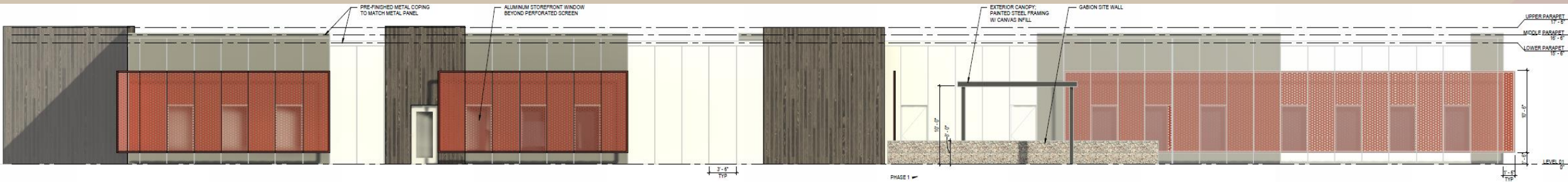




# Elevations



2A EXTERIOR ELEVATION - OVERALL, WEST  
A5.4 SCALE: 3/16" = 1'-0"



3A EXTERIOR ELEVATION - OVERALL, SOUTH  
A5.4 SCALE: 3/16" = 1'-0"



# Elevations



SC AS.4 EXTERIOR ELEVATION - OVERALL, NORTH  
SCALE: 3/16" = 1'-0"



SC AS.4 EXTERIOR ELEVATION - OVERALL, EAST  
SCALE: 3/16" = 1'-0"



# Renderings





# Renderings





# Renderings





# Renderings





# Color and Material Board

BURNT WOOD (SHOU SUGI BAN) OR SIMILAR

ALTERNATE: NICHIBA VINTAGEWOOD ARCHITECTURAL WALL PANEL, BLACKWOOD

PERFORATED, WEATHERED STEEL PANEL; SIMILAR OFFSET PATTERN BUT WITH GREATER OPEN AREA PERCENTAGE (50%+ OPEN AREA)

(SIMILAR LOOK AT FEEL DESIGN INTENT)





# Alternative Compliance

- ✓ Materials. No more than 50% of the façade may be covered with one single material



# Findings

Staff is seeking your review and recommendation on the following:

- ✓ Proposed building elevations & landscape design
- ✓ Alternative compliance requests

*Staff welcomes any feedback*



# Design Review Board