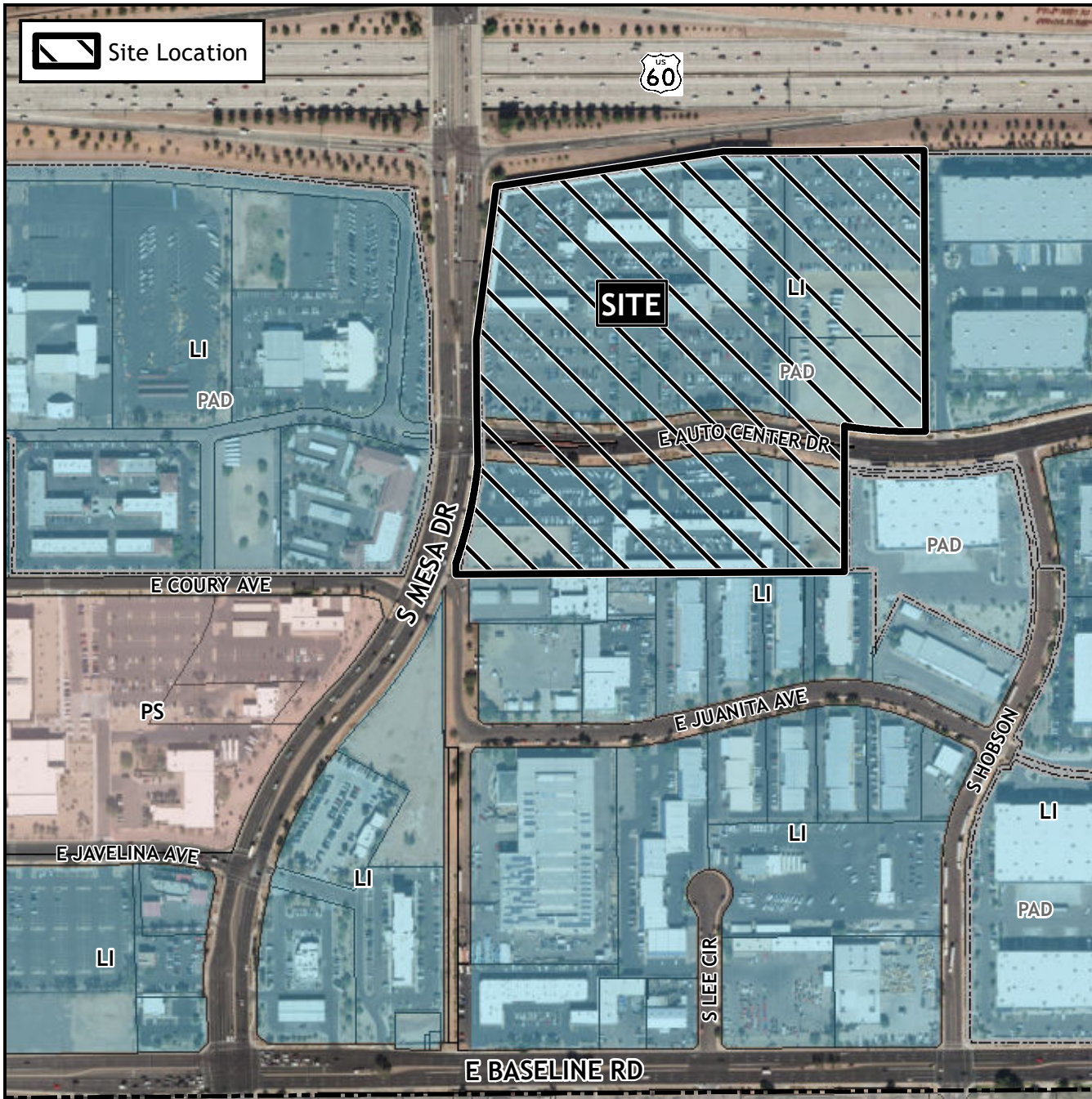


Planning and Zoning Vicinity Map: ZON23-00940



Case Details

CASE:

ZON23-00940

SITE / ADDRESS:

(District 4). Within the 1600 to 1900 blocks of South Mesa Drive (east side) and within the 400 to 600 blocks of East Auto Center Drive (both sides). Located north of Baseline Road on the east side of Mesa Drive (26± acres).

REQUEST:

Rezone from Light Industrial with a Planned Area Development overlay (LI-PAD) to Light Industrial with a new Planned Area Development overlay (LI-PAD) and Major Site Plan Modification. This request will allow for the modification to two automobile dealerships.

