



# Design Review Board



# DRB22-01217

## Salad & Go



# Request

- Design Review
- Development of a Restaurant with a Drive-thru

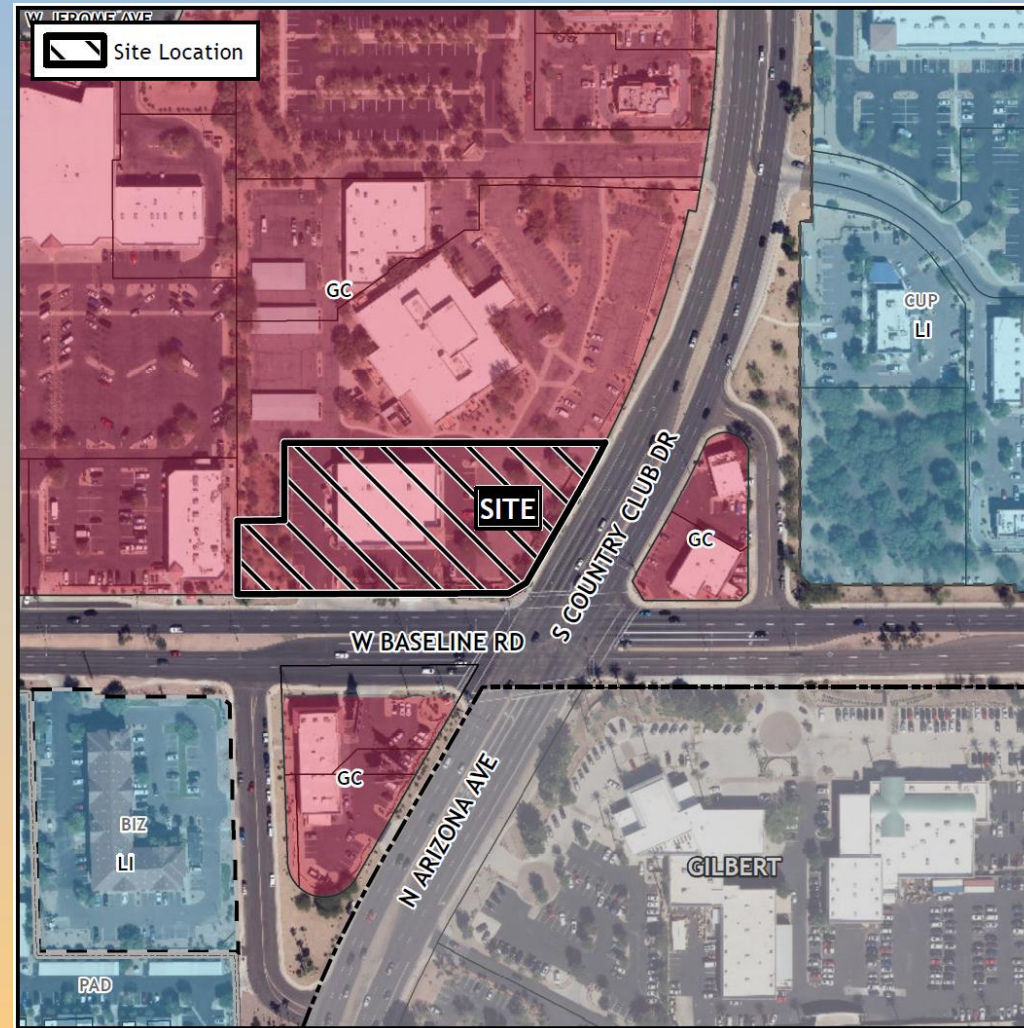






# Location

- North of Baseline Road
- On the west side of Country Club Drive







# Zoning

- General Commercial (GC)
- Restaurant with drive-thru is permitted







# Site Photo



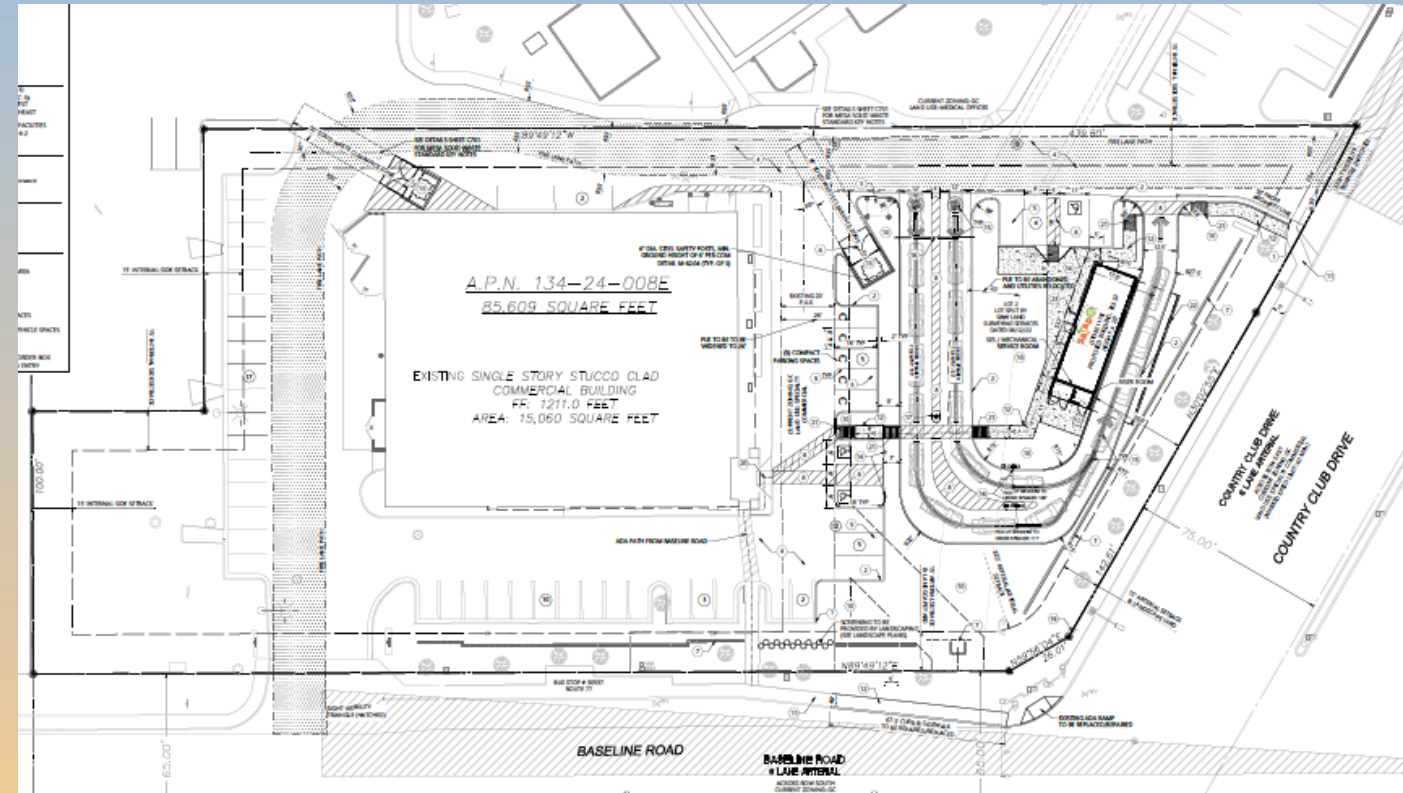
Looking northeast from Baseline Rd





# Site Plan

- 783 sq ft restaurant building with drive-thru
- Canopies extend east
- Pedestrian link with sidewalk
- Vehicular access off Country Club Dr and Baseline Rd
- SCIP request for existing nonconforming conditions



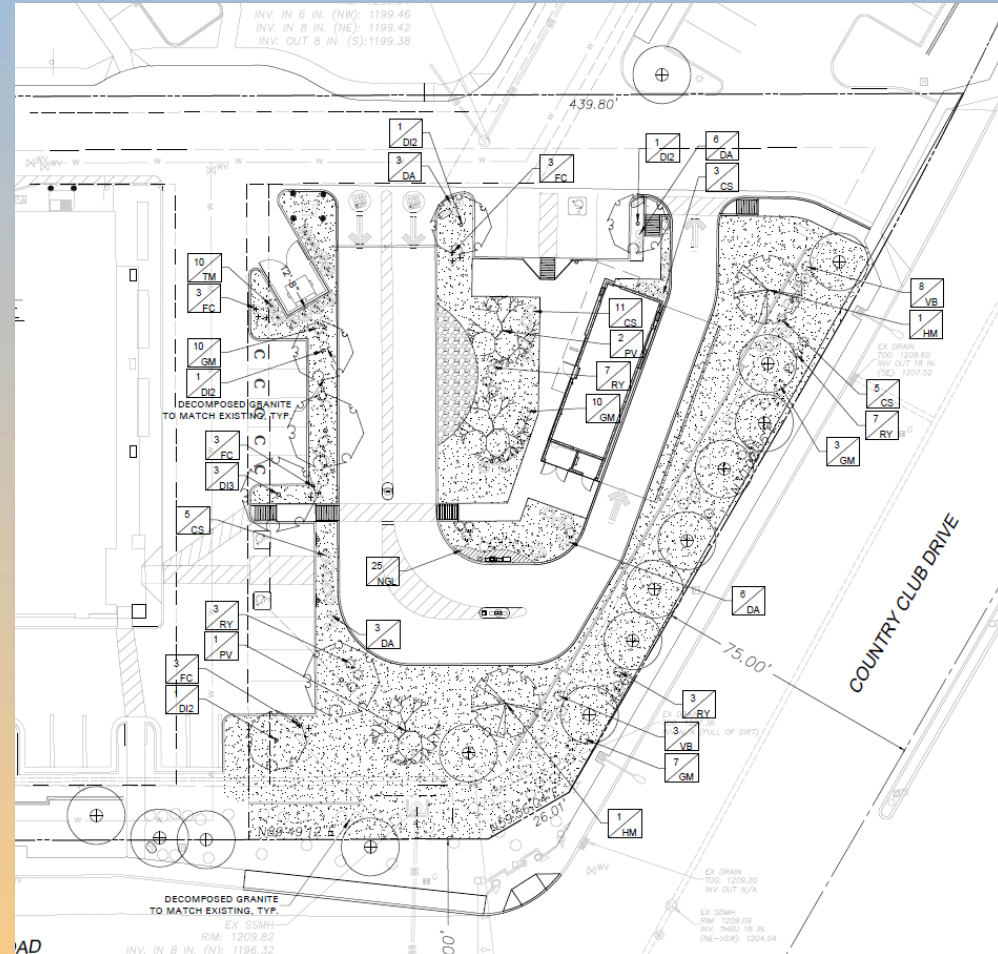


# Landscape Plan

## PLANT SCHEDULE

QTY	LABEL	COMMON NAME	SCIENTIFIC NAME	SIZE	NOTES
<b>SHADE TREES</b>					
4	DI2	Desert Ironwood	<i>Olneya tesota</i>	24" tree box	10' ht., 3' spread, matching
3	DI3	Desert Ironwood	<i>Olneya tesota</i>	36" tree box	12' ht., 4' spread, matching
2	HM	Honey Mesquite	<i>Prosopis glandulosa</i>	36" tree box	12' ht., 4' spread, matching
3	PV	Palo Verde	<i>Parkinsonia florida</i>	24" tree box	10' ht., 3' spread, matching
<b>SHRUBS</b>					
14	CS	Chihuahuan Sage	<i>Leucophyllum laevigatum</i>	5 gal.	full, 24" sprd, 36" o.c.
18	DA	Damianita	<i>Chrysactina mexicana</i>	5 gal.	full, 24" o.c.
15	FC	Firecracker Plant	<i>Russelia equisetiformis</i>	5 gal.	full, 24" o.c.
30	GM	Gulf Muhly "Regal Mist"	<i>Muhlenbergia capillaris</i>	5 gal.	full, 30" o.c.
20	RY	Red Yucca	<i>Hesperaloe parvifolia</i>	5 gal.	full, 24" sprd, 30" o.c.
10	TM	Twisted Myrtle	<i>Myrtus communis</i>	7 gal.	full, 30" sprd, 48" o.c.
11	VB	Valentine Bush	<i>Eremophila maculata</i> 'Valentine'	5 gal.	full, 24" sprd, 36" o.c.
<b>GROUND COVER/VINES/GRASS</b>					
25	NGL	New Gold Lantana	<i>Lantana x hybrida</i> 'New Gold'	5 gal.	full, 24" o.c.
		Decomposed Granite			
		2-4" River Rock			

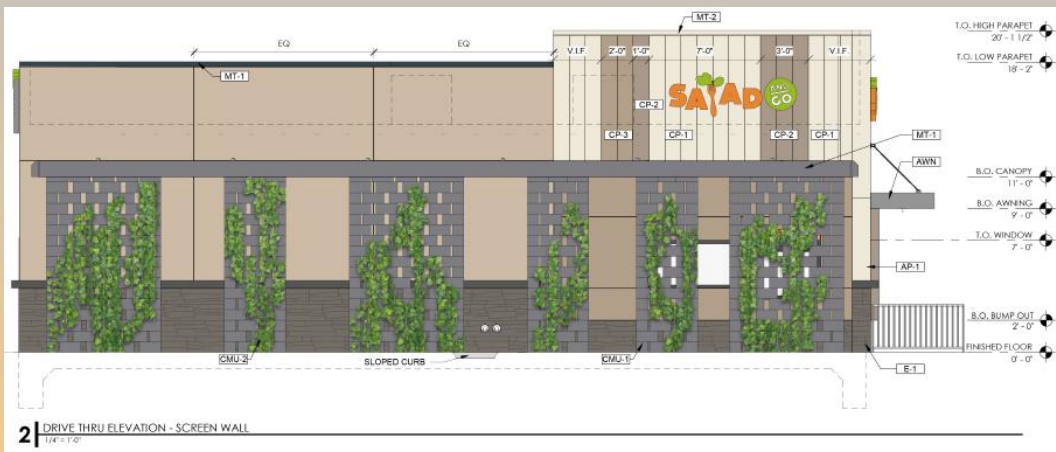
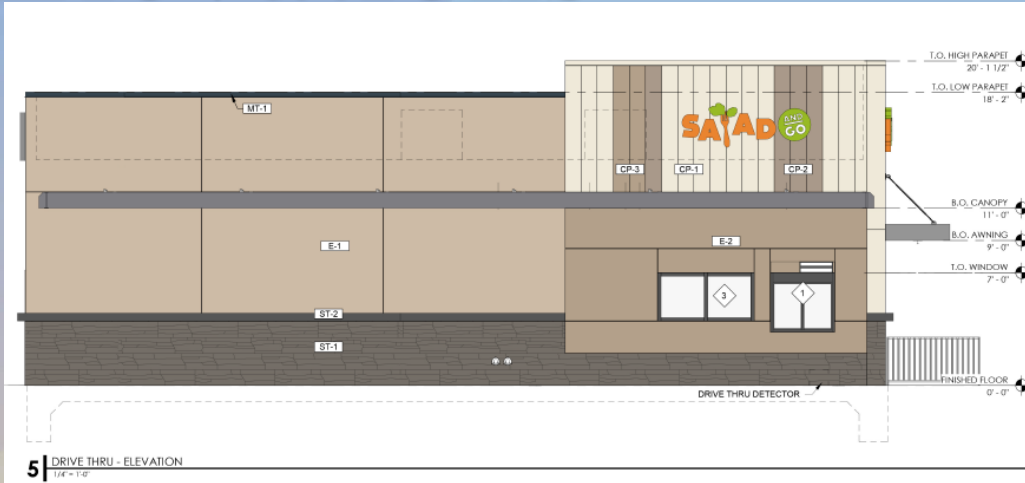
Plant list is an aid to bidders only. Contractor shall verify all quantities on plan. All heights and spreads are minimums. Trees shall have a strong central leader and be of matching specimens. All plant material shall meet or exceed remarks as indicated.



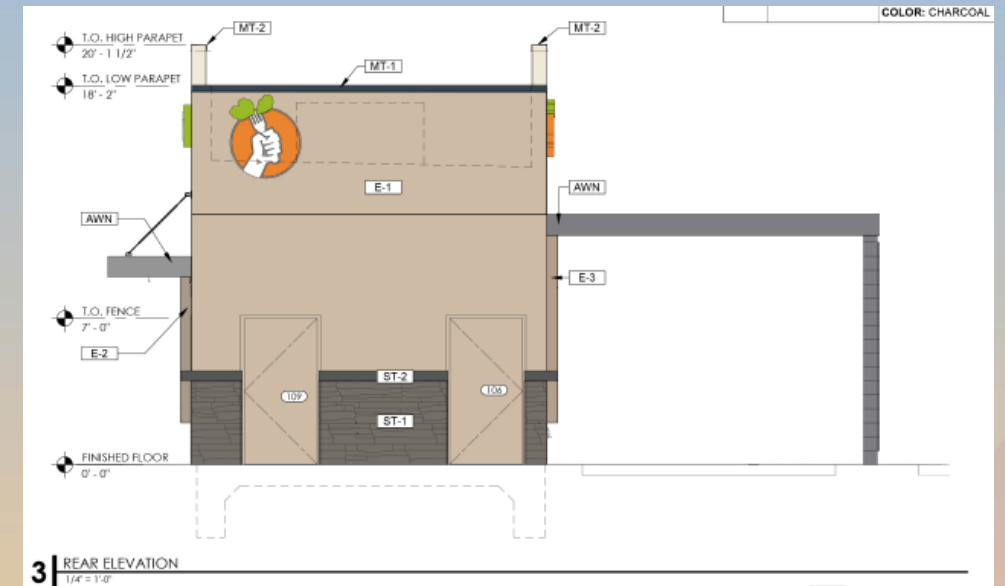




# Elevations



East Elevation



South Elevation



# Elevations



West Elevation






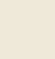

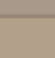


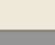
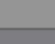


North Elevation





# Colors & Materials

EXTERIOR FINISH SCHEDULE			
MARK	MATERIAL	DESCRIPTION	
E-1	E.I.F.S.	PRODUCT: DRYVIT FINISH: SAND COLOR: MATCH SHERWIN WILLIAMS SW-2822 DOWNING SAND	
E-2	E.I.F.S.	PRODUCT: DRYVIT FINISH: SAND COLOR: MATCH SHERWIN WILLIAMS SW-6087 TRUSTY TAN	
E-3	E.I.F.S.	PRODUCT: DRYVIT FINISH: SAND COLOR: MATCH SHERWIN WILLIAMS SW-7501 TRESHOLD TAUPE	
ST-1	STONE	PRODUCT: CULTURED STONE FINISH: ECHO RIDGE COLOR: PRO FIT ALPINE LEDGESTONE	
ST-2	SILL	PRODUCT: CULTURED STONE FINISH: CAST FIT SILL COLOR: CARBON	
CP-1	METAL PANELS	PRODUCT: BERRIDGE FW-12 PANEL 24 GAUGE, WITHOUT GROOVES. FINISH: FIELD PAINTED COLOR: MATCH SHERWIN WILLIAMS SW-7002 DOWNY	
CP-2	METAL PANELS	PRODUCT: BERRIDGE FW-12 PANEL 24 GAUGE, WITHOUT GROOVES. COLOR: MATCH SHERWIN WILLIAMS SW-7501 TRESHOLD TAUPE	
CP-3	METAL PANEL	PRODUCT: BERRIDGE FW-12 PANEL 24 GAUGE, WITHOUT GROOVES. FINISH: FIELD PAINTED COLOR: MATCH SHERWIN WILLIAMS SW-6087 TRUSTY TAN	
MT-1	METAL COPING	COLOR: SW-3063 CHARCOAL	
MT-2	METAL COPING	COLOR: MATCH SHERWIN WILLIAMS SW-7002 DOWNY	
AWN	AWNING	PRODUCT: TBD FINISH: ALUMINUM COLOR: SW-7068 GRIZZLE GRAY	
CMU-1	CMU	PRODUCT: CMU - CABCO FINISH: SMOOTH FINISH COLOR: CHARCOAL	



# Alternative Compliance

- ✓ Materials. No more than 50% of the façade may be covered with one single material





# Findings

Staff is seeking your review and recommendation on the following:

- ✓ Proposed building elevations
- ✓ Proposed landscape plan
- ✓ Alternative Compliance request

*Staff welcomes any feedback*



# Design Review Board