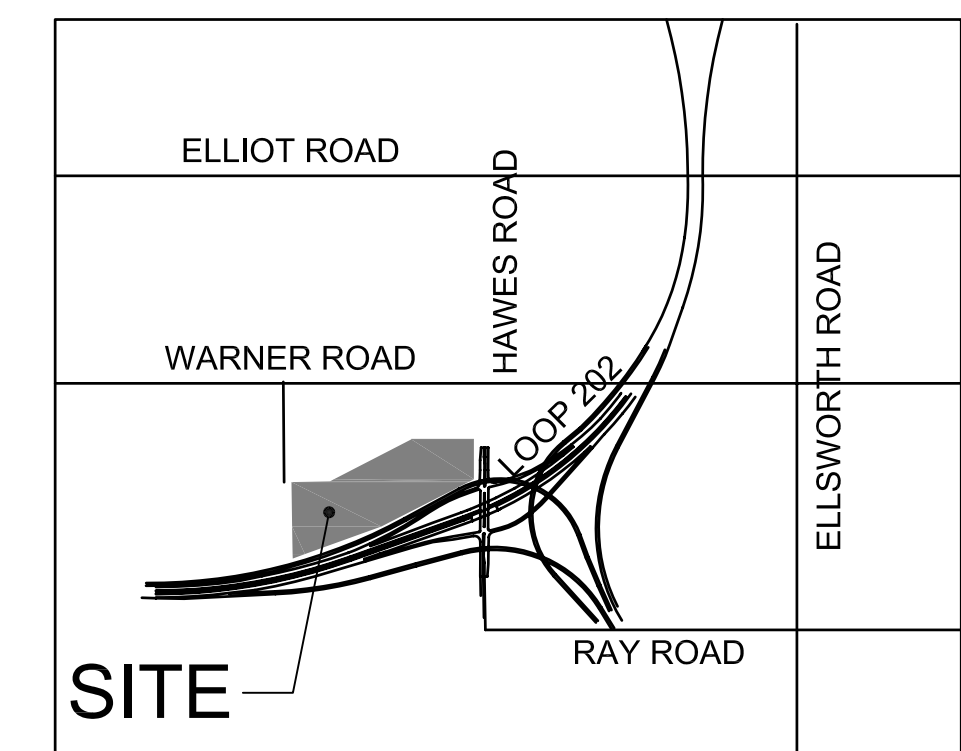


VICINITY MAP



LIGHTING SITE PLAN

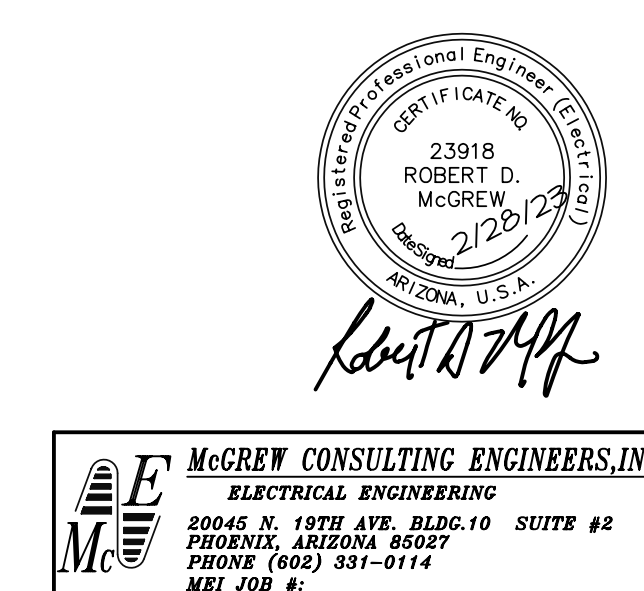


GATEWAY INTERCHANGE

N.W.C. Loop 202 & Hawes Road
Proposed Industrial Development
Mesa, Arizona

EASTGROUP
PROPERTIES

E0.1
LIGHTING SITE PLAN



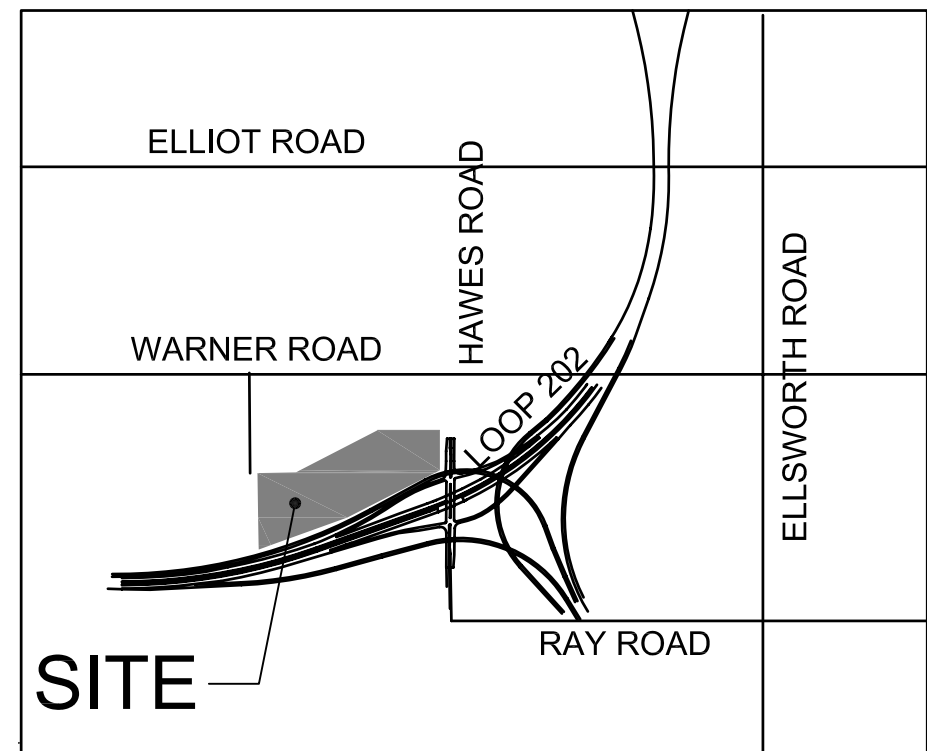
Butler Design Group, Inc.
architects & planners

GATEWAY INTERCHANGE

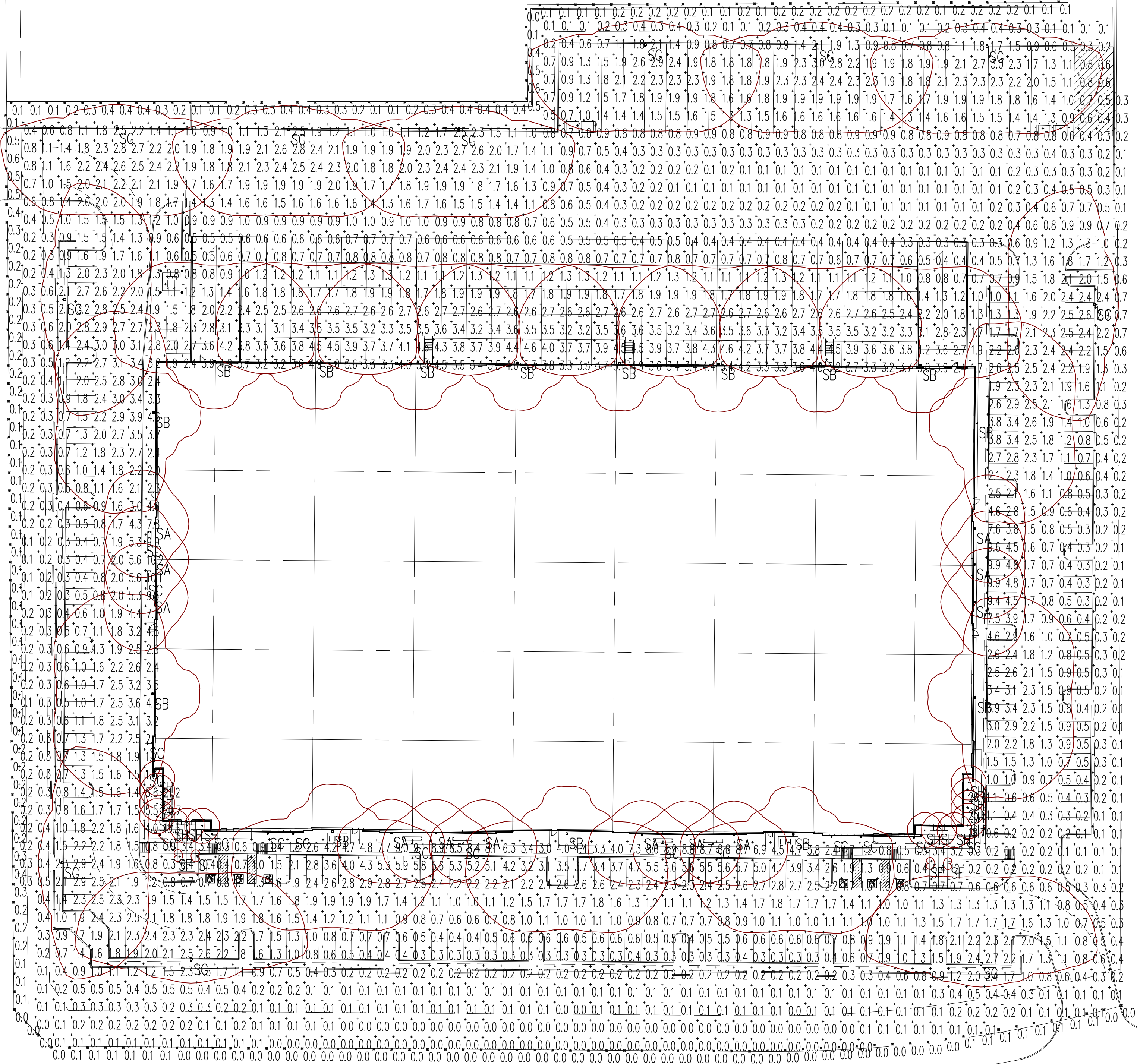
N.W.C. Loop 202 & Hawes Road
Proposed Industrial Development
Mesa, Arizona

E0.2
LIGHTING SITE PLAN

VICINITY MAP



PHOTOMETRIC SITE PLAN



Statistics						
Description	Symbol	Avg	Max	Min	Max/Min	Avg/Min
PROPERTY LINE	✕	0.1%	0.6%	0.0%	N/A	N/A
CHUTE FC	+	0.1%	0.6%	0.0%	N/A	N/A

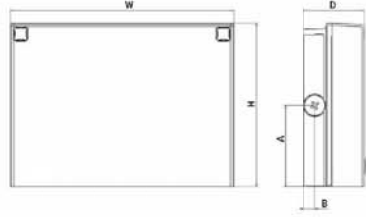
Schedule									
Symbol	Label	QTY	Manufacturer	Catalog	Description	Lamp	Number	Lamp Output	Intensity Multiplier
SA	12	LITHONIA	WPA2 LED 40K MVOLT (FINISH)		WPA2 LED wallpack 6000m 4000K color temperature 120-277 volt, MOUNTED AT 15'	LED 4000K	1	14181	1
SB	15	LITHONIA	DSX1 LED P4 40K T4M MVOLT WBA		DSX1 LED P4 40K T4M MVOLT, MOUNTED AT 20'	LED 4000K	1	1034	1
SC	16	WAC	9511 27 6Z (60 DEGREE MAX)		SPOT AT GRADE	LED 2700K	1	1034	1
SD	0	STRUCTURA	LIN-M1075-UNV-L30-4-CX-XX-XX-STD		Structure Inc. - Pole mount roadway luminaire. Product ID: LIN-M1075-UNV-L30-4-CX-XX-XX-STD Black painted extruded aluminum Housing: 12 LED's in one 6 x 2 array with shield of clear plastic individual lenses. One Philips Advance Xitanium LED driver. Model: X1056227510548581 Operating at 120 VAC and 60 Hz.	LED 3000K	12	340	1
SE	4	SONNEMANN	F342 72 WL		AT 2'	LED	1	184	1
SG	11	LITHONIA	DSX1 LED P4 40K T3M MVOLT SPA HS (FINISH) / SSS 22.2 POLE WITH 2.5' BASE		DSX1 LED P4 40K T3M MVOLT with housings at 20'	LED 4000K	1	11404	1
SH	14	ALW	C30M D W 20 83 4 60		CORE 3 CYLINDER DOWNLIGHT	LED 4000K	1	2161	1



WPX LED Wall Packs



Specifications



Luminaire	Height (H)	Width (W)	Depth (D)	Side Cord Location	Weight
WPX1	8 1/2" (21.6 cm)	11 1/2" (29.3 cm)	3 1/2" (9.1 cm)	4.0" (10.3 cm)	0.6 lbs (2.8 kg)
WPX2	9 1/2" (24.1 cm)	12 3/4" (31.1 cm)	4 1/4" (11.0 cm)	4.5" (11.5 cm)	0.7 lbs (3.2 kg)
WPX3	9 5/8" (24.8 cm)	13 9/16" (33.0 cm)	5 1/8" (13.2 cm)	4.7" (12.0 cm)	0.7 lbs (3.2 kg)

Ordering Information

Series	Color Temperature	Voltage	Options	Finish
WPX1 LED P1	30K 3000K	120V 120V-277V	None	Dark Bronze
WPX1 LED P2	40K 4000K	347 347V-1	Emergency battery backup, CE compliant (40K, 100,000 hrs)	White
WPX2 LED	50K 5000K		Emergency battery backup, CE compliant (50K, 100,000 hrs)	Black
WPX3 LED			Emergency battery backup, CE compliant (50K, 100,000 hrs)	Black

Note: The lumen output and input power shown in the ordering tree are average representations of all configuration options. Specific values are available on request.

FEATURES & SPECIFICATIONS

INTENDED USE
The WPX LED wall packs are designed to provide a cost-effective, energy-efficient solution for the one-for-one replacement of existing HID wall packs. The WPX1, WPX2 and WPX3 are ideal for replacing up to 150W, 250W, and 400W HID luminaires respectively. WPX luminaires deliver a uniform, wide distribution. WPX is rated for -40°C to 40°C.

CONSTRUCTION
WPX features a die-cast aluminum main body with optional thermal management that both enhances LED efficacy and extends component life. The luminaires are IP66-rated, and sealed against moisture or environmental contaminants.

ELECTRICAL
Light engine(s) configurations consist of high-efficiency LEDs and LED lumen maintenance of 100,000 hours. Color temperature (CCT) options of 3000K, 4000K and 5000K with maximum CRI of 90. Electronic drivers ensure system power factor >90% and THD <5%. All luminaires have 60V surge protection. WPX1 LED P1 comes with a standard surge protection rating of 25kV. It can be ordered with an optional 60V surge protection.

WARRANTY
3-year limited warranty. Complete warranty terms located at www.lithonia.com/Products/Products/Products.aspx.

INSTALLATION
WPX can be mounted directly over a standard electrical junction box. Three 1/2 inch conduit ports on three sides allow for surface conduit wiring. A port on the back surface allows pole through conduit wiring on surface that don't have an electrical junction box. Wiring can be made in the integral wiring compartment in all cases. WPX is only recommended for installations with LEDs factory elements.

LISTINGS
CSA Certified to meet U.S. and Canadian standards. Suitable for wet locations. IP66 Rated. Designated for use in wet locations. (UL) qualified products. Not all versions of this product may be UL qualified. Please check the UL Qualified Products List at www.ul.com/Products/Products.aspx to confirm which versions are qualified. International Dark Sky Association (IDA) Future Seal of Approval (FSO) is available for all products on this page utilizing 3000K color temperature only.

Notes:
The standard WPX LED wall pack luminaires come with field-adjustable drive current features. This feature allows tuning the output current of the LED drivers to adjust the lumen output to the luminaire.

One Lithonia Way • Conyers, Georgia 30627 • Phone: 1-800-735-SERV (7378) • www.lithonia.com

© 2020-2021 Acuity Brands Lighting, Inc. All rights reserved.

WPX LED
Rev. 08/21/21

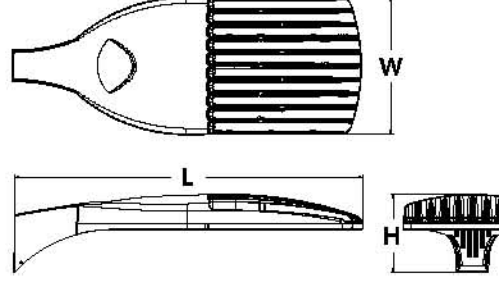
SA

D-Series Size 1 LED Area Luminaire



Specifications

EPA:	1.01 ft ² (0.09 m ²)
Length:	33" (83.8 cm)
Width:	13" (33.0 cm)
Height:	7-1/2" (19.0 cm)
Weight (max):	27 lbs (12.3 kg)



Capable Luminaire

This item is an A+ capable luminaire, which has been designed and tested to provide consistent color appearance and system-level interoperability.

- All configurations of this luminaire meet the Acuity Brands' specification for chromatic consistency
- This luminaire is A+ Certified when ordered with DTL[®] controls marked by a **shaded background**.
- DTL DTL equipped luminaires meet the A+ specification for luminaire to photocell interoperability¹
- This luminaire is part of an A+ Certified solution for ROAM[®] or XPoint™ Wireless control networks, providing out-of-the-box control compatibility with simple commissioning, when ordered with drivers and control options marked by a **shaded background**²

- See ordering tree for details.
- A+ Certified Solutions for ROAM Require the order of one ROAM node per luminaire. Sold Separately

Ordering Information

Series	LEDs	Color Temperature	Distribution	Voltage	Mounting
DSX1 LED	Forward optics P1 P4 P7 P2 P5 P8 P3 P6 P9 Rotated optics P10 P11 P12 P13	30K 3000K 40K 4000K 50K 5000K AMBPC Amber phosphor converted ¹	T15 Type II short T25 Type II short T35 Type II medium T45 Type II medium T55 Type II short T65 Type II medium T75 Type II medium T85 Type II medium T95 Type II very short	120V ¹ 208V ¹ 240V ¹ 277V ¹ 347V ¹ 480V ¹	Shipped included SPA Square pole mounting RPA Round pole mounting SQA Square pole universal mounting adapter ¹ RPA Round pole universal mounting adapter ¹ Shipped separately EMAS DDBDD Must use mounting bracket adapter (specify finish) ¹

Control options	Other options	Finish
Shipped installed N/A PER NEMA twist-lock receptacle only (controls ordered separately) ¹ PER Five-wire receptacle only (controls ordered separately) ¹ PER Seven-wire receptacle only (controls ordered separately) ¹ DMG 0-10V dimming control not box of factory for external control (lead-out fixture) DC Dual switching ¹ PR Bi-level, motion/ambient sensor, 8-15' mounting height, ambient sensor enabled at 56' ¹ PR Bi-level, motion/ambient sensor, 15-30' mounting height, ambient sensor enabled at 56' ¹ PR Bi-level, motion/ambient sensor, 30-35' mounting height, ambient sensor enabled at 56' ¹ PR Bi-level, motion/ambient sensor, 35-40' mounting height, ambient sensor enabled at 56' ¹	PRH HCTV Bi-level, motion/ambient sensor, 15-30' mounting height, ambient sensor enabled at 56' ¹ BL30 Bi-level switched dimming, 30W ¹ BL50 Bi-level switched dimming, 50W ¹ PMUT303 Part night, dim 3 hrs ¹ PMUT303 Part night, dim 5 hrs ¹ PMUT303 Part night, dim 7 hrs ¹ FAO Field adjustable output ¹	Dark Bronze White Natural aluminum White Textured dark bronze Textured black Textured natural aluminum Textured white

DSX1 LED
Rev. 07/25/18
Page 1 of 7

SB, SG

ACCENT 12V 5011



PRODUCT DESCRIPTION

Landscape accent luminaire. One fixture replaces all older halogen landscape accent lights

FEATURES

- Adjustable and lockable beam angle
- Integral dimmer
- IP66 rated, Protected against high-pressure water jets
- Includes a detachable shroud
- Solid diecast brass or corrosion resistant aluminum
- Factory sealed water tight fixtures
- Mounting stake, 6' lead wire and direct burial gel filled wire nuts included
- Maintains constant lumen output against voltage drop
- UL 1838 Listed
- Not suitable to use with external dimmers

ORDERING NUMBER

		Color Temp	Finish
5011	Accent 12V	27 2700K	BK Black on Aluminum
		30 3000K	BZ Bronze on Aluminum
			BBR Bronze on Brass

5011 -

Example: 5011-30BBR

wacighting.com Phone (800) 526-2588 Fax (800) 526-2585	Headquarters/Eastern Distribution Center 44 Harbor Park Drive Port Washington, NY 11050	Central Distribution Center 1600 Distribution Ct. Lithia Springs, GA 30122	Western Distribution Center 1750 Archibald Avenue Ontario, CA 91760
--	---	--	---

WAC Lighting retains the right to modify the design of our products at any time as part of the company's continuous improvement program. OCT 11 2018

SC

WAC

LANDSCAPE LIGHTING

Fixture Type:

Catalog Number:

Project:

Location:

SPECIFICATIONS

Input: 9-15VAC (Transformer is required)
Power: 2W to 16W / 2VA - 23VA
Brightness: 150 lm to 1045 lm
Beam Angle: 10° to 60°
CRI: 85
Rated Life: 70,000 hours



PROJECT

Job	Notes
Type	
Part #	

SPECIFICATIONS

Source: Xicato XTM LED module - up to 3000 lumens
CCT: 2700K, 3000K, 3500K or 4000K
Color Consistency: 1/2 SDCM (Macadam) along BBL, CCT +/- 40K to 70K, Duv +/- .001
CRI (Ra): 83 or 98
Driver / Location: Included / Remote mount or deep canopy options
Dimming: 0-10V or phase dimming to 10% standard; DALI, DMX and 1% dimming available
Input Voltage: 100 to 277VAC, phase dimmable versions are 120VAC only
Power: Up to 36 watts max, depending on LED module / driver
Reflector: 20°, 40° or 60° - field replaceable without tools
Material: CNC machined aluminum with stainless steel hardware
Finish: Powder coat - TGIC polyester for exterior and interior use
Weight: 4 lb. [1.8 kg]
Location: Listed for Wet & Damp locations
Approvals: ETL Listed to UL 1598, 2108, 8750 and CSA C22.2 # 9 & #250.0
L80 Life: > 50,000 hours at 80% lumen maintenance based on IESNA LM-80-08
Warranty: Lifetime Limited Warranty - see warranty for details
IES Files: LM 79-08 IES files available
Modifications: Any modification or customization is possible - consult factory



ORDERING LOGIC

Model	Location	Dimming	Mounting Location	Output	CRI *	C.C.T.	Reflector	Shail	Options
CS3M	Recessed	N=None	D=Down	07-700 lm	83-85	27-2700K	20-20°	XX	
	Recessed	P=Phase	W=Wall	18-1800 lm	98-98	30-3000K	40-40°	XX	
	Canopy	V=0-10V	Z=Other	18-1800 lm	98-98	30-3000K	40-40°	ZZ-Custom	

* 98 CRI not available in 3000 lm

Example Part Number: CS3M-ND-2083740-83
COTE 300 SX Surface Mount - Remote Driver, No Dimming, Damp Location - 2000 lm, 83 CRI, 2700K, 40° Reflector - 83 Fixed Shell

Options highlighted in green = QuickShip qualifying option. For the entire luminaire configuration to be QuickShip-eligible, ALL options specified in the configuration must be ones highlighted green. NOTE: Maximum of 100 cylinders of QuickShip-eligible product per order.

A 1035 22nd Avenue, Unit 1 - Oakland, CA 94606 P 510.489.2530 E TalkToUs@alwusa.com W alwusa.com 1
rev 210121

7342 Box 22" LED Bollard

Dimensions:
Height: 22"
Width: 3 1/2"
Depth: 3 1/4"

Description:
Shade: Diecast Aluminum
Base: 1/4" H x 5 1/2" W x 3 1/4" D

Lamping Options:
LED: 10w, 1020 Lumens (645 Net Lumens)
Warm White (3000K), 90 CRI
12VAC Input

Available Finishes:
Textured Bronze
7342.72-WL
Textured Gray
7342.74-WL

12VAC Power supply required, sold separately. Consult Website for requirements and available options.

inside out[®]
For Indoor and Outdoor Locations

SONNEMAN[®]
A WAY OF LIGHT

SF

GATEWAY INTERCHANGE

N.W.C. Loop 202 & Hawes Road
Proposed Industrial Development
Mesa, Arizona

EASTGROUP
PROPERTIES

E0.3
FIXTURE CUT SHEET

McGrew Consulting Engineers, Inc.
ELECTRICAL ENGINEERING
2004S N. 19TH AVE. BLDG. 10 SUITE #2
PHOENIX, ARIZONA 85027
PHONE (602) 981-0114
MRI JOB #: 23011

Butler Design Group, Inc
architects & planners