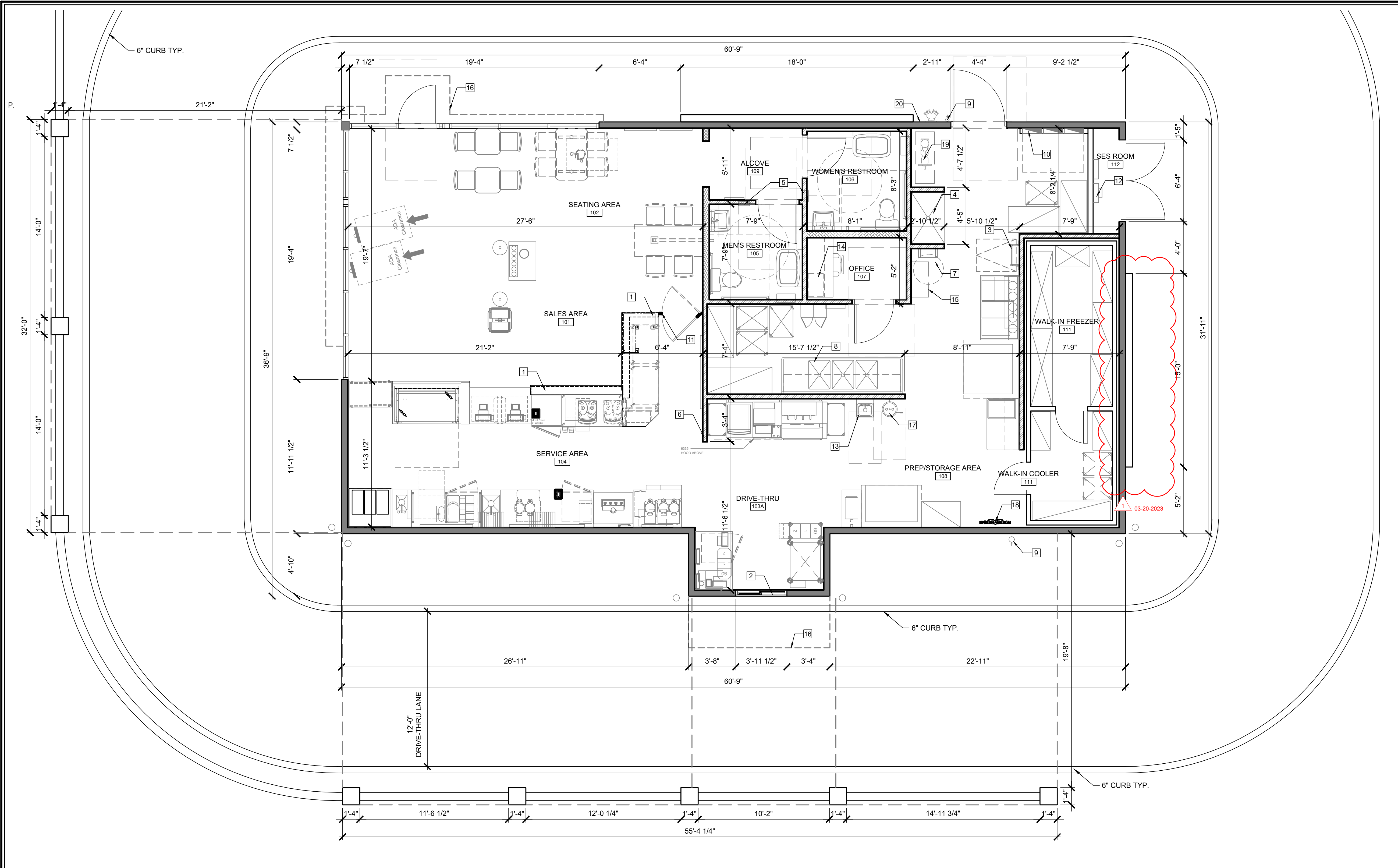
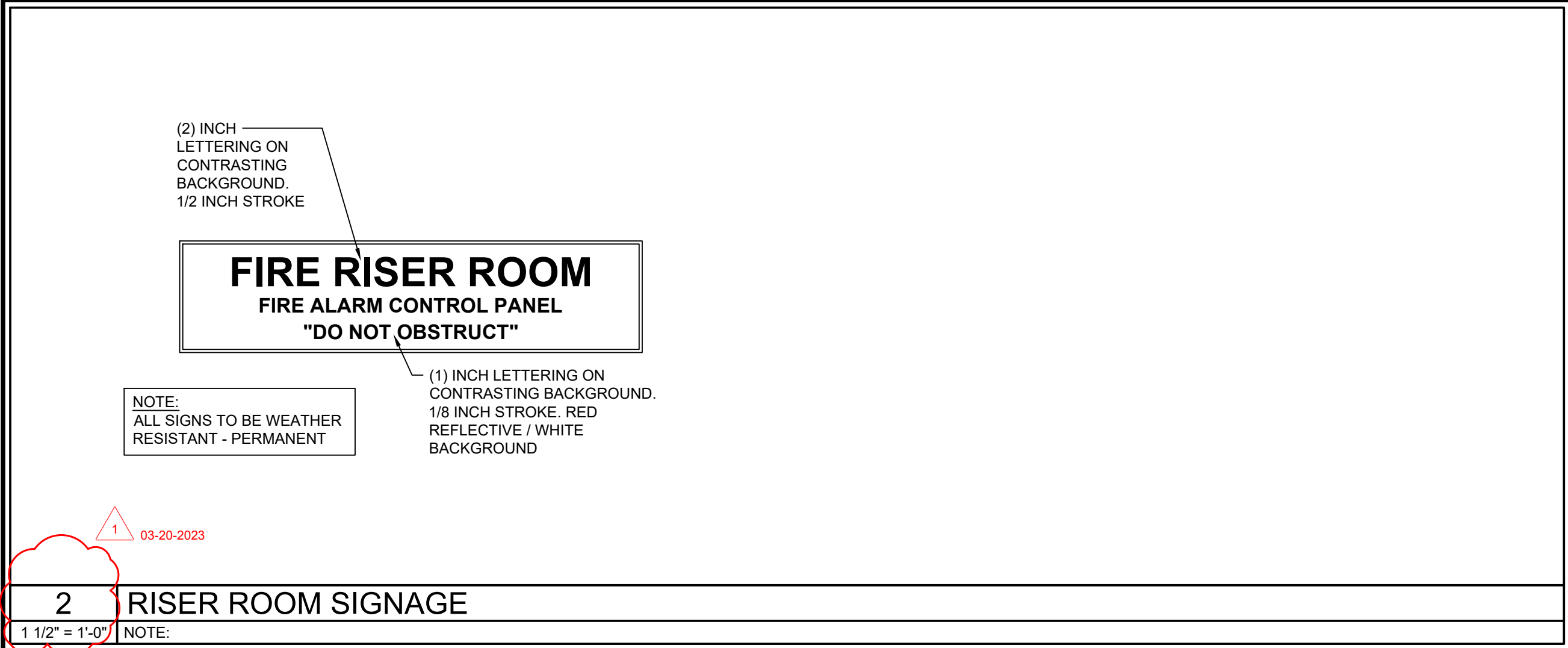


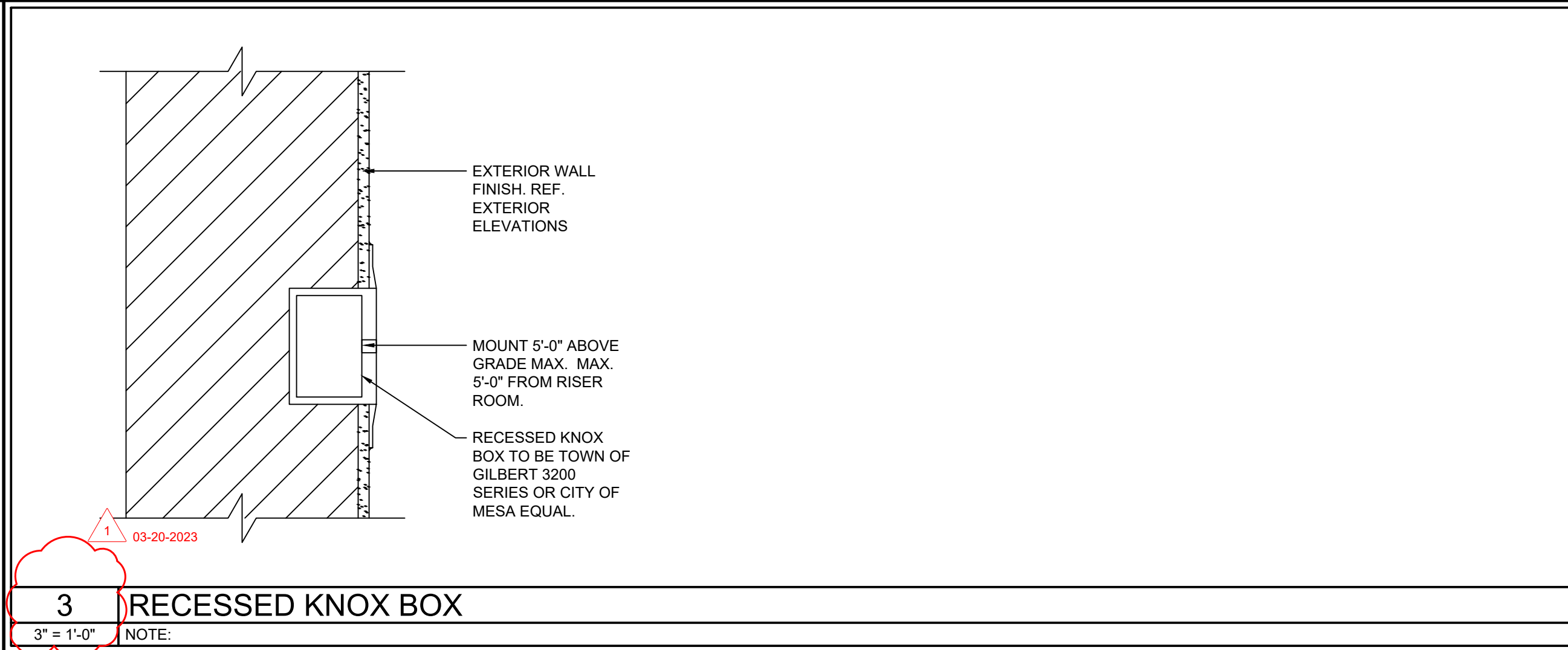
\\largo\project\13220\00110 - Retail\04_Working_Dwg\02_Arch\XXXXXX-XXX_A-101_Floorplan.dwg, Option 1, 3/20/2023 3:58:48 PM, Helebsour, Joshua



1 FLOOR PLAN
1/4" = 1'-0" NOTE:




2 RISER ROOM SIGNAGE
1 1/2" = 1'-0" NOTE:



3 RECESSED KNOX BOX
3" = 1'-0" NOTE:


- ### GENERAL NOTES
- A. TYPICAL SUBSTRATES FOR INTERIOR WALLS SHALL BE AS FOLLOWS:
PREP/ KITCHEN AND STORAGE AREAS:
0'-0" TO 3'-0" - 5/8" DUROCK CEMENT BOARD, 3'-0" AND ABOVE - 5/8" ORIENTED STRAND BOARD (OSB)
SERVICE AREA:
5/8" MIN. ORIENTED STRAND BOARD (OSB), 5/8" DUROCK CEMENT BOARD BEHIND PORCELAIN/ CERAMIC TILES.
SALES AND SEATING AREAS:
5/8" GYPSUM BOARD, 5/8" DUROCK CEMENT BOARD BEHIND PORCELAIN/ CERAMIC TILES, 5/8" ORIENTED STRAND BOARD @ DECORATIVE PLAM "WOOD" WALLS.
RESTROOMS:
5/8" DUROCK CEMENT BOARD
- B. GENERAL CONTRACTOR SHALL PROVIDE ADEQUATE BLOCKING AS REQUIRED THROUGHOUT; IN RESTROOMS FOR GRAB BARS, LAVATORIES, HAND DRIERS, MIRRORS, PAPER TOWEL DISPENSERS, SOAP DISPENSERS, AND OTHER ACCESSORIES UNLESS OTHERWISE NOTED, IN SERVICE AREA FOR: VDU, WALL SHELVES, ETC.
- C. DIMENSIONS SHOWN ARE TO THE FACE OF STUD U.N.O..
- D. REFER TO EQUIPMENT "K" SHEETS FOR INFORMATION REGARDING THE EQUIPMENT AND EQUIPMENT LAYOUT.
- E. SEE SHEET A-10.0 FOR DOOR SCHEDULE AND DOOR & FRAME TYPES.
- F. SEE SITE PLAN PROVIDED BY OWNER FOR NUMBER AND LOCATION OF THE FOLLOWING SITE FURNISHINGS: TABLE WITH SEATING, ADA TABLE WITH SEATING, TRASH CAN NEXT TO DRIVE-THRU AREA, AND GROUNDSKEEPER SMOKING MANAGEMENT RECEPTACLE. SEE NATIONAL ACCOUNT SOURCE INFORMATION FOR MANUFACTURER / SUPPLIER.
- G. PROVIDE FIRE EXTINGUISHERS, TYPE ABC, WALL HUNG, TOP @ 4'-0" A.F.F. (BY G.C.), - NUMBER AND LOCATION AS DETERMINED BY LOCAL CODE
- H. SPRINKLER SYSTEM DESIGN WILL BE PROVIDED DURING LATER PHASES OF THE WORK.

- ### GENERAL NOTES
1. CASEWORK BY OTHERS. MILLWORK VENDOR TO PROVIDE CLEARANCE FOR CLEANING & UTILITIES @ FRONT LINE COUNTER.
2. SLIDING DRIVE-THRU WINDOW. - SEE DUNKIN' CONSTRUCTION SPECIFICATIONS ON GN SHEETS AND NATIONAL ACCOUNTS ON THE EXTRANET.
3. ROOF LADDER
4. JANITOR'S SINK - PROVIDE DEDICATED WATER SUPPLY FOR P&G DISPENSER (SEE NATIONAL ACCOUNTS). P&G EQUIPMENT INSTALLED BY VENDOR- SEE DETAIL #10/ SHEET P-3.0
5. RECESSED HAND DRYER W/ BRANDING AND SUSTAINABILITY MESSAGE; REFER TO RESTROOM EQUIP. SCHEDULE ON SHT. A-8.1
6. P.O.S. OUTLET BOX (48" A.F.F.) WITH 1/2" CONDUIT W/ PULLSTRING TO CEILING
7. PROVIDE SHELF AND STRAPPING FOR TANK WATER HEATER (WHEN USED) MOUNTED OVER MOP SINK- PER LOCAL CODE
8. 3 COMPARTMENT SINK W/ 2 INTEGRATED DRAIN BOARDS- PROVIDE DEDICATED WATER SUPPLY FOR P&G DISPENSER (SEE NATIONAL ACCOUNTS). P&G EQUIPMENT INSTALLED BY VENDOR- SEE DETAIL #9/ SHEET P-3.0
9. FROST PROOF HOSE BIB
10. RECESSED ELECTRICAL PANELS; SEE ELECTRICAL SHEETS
11. SWING GATE @ HAND OFF AREA BY MILLWORK VENDOR.
12. ELECTRICAL METER - PROVIDE APPROPRIATE CONNECTION TO ELECTRICAL PANELS AS PER FEDERAL, STATE AND LOCAL CODES
13. PROVIDE DIRECT LINE W/ TEMPERATURE REGULATOR VALVE FROM HWH TO ALL HAND WASHING SINKS
14. G.C. TO PROVIDE ANCHOR BOLTS FOR SLAB MOUNTED SAFE IN OFFICE- REFER TO SPECIFICATIONS TO BE PROVIDED BY FRANCHISEE.
15. WATER FILTRATION SYSTEM (BRANCH OFF MAIN LINE) FOR COFFEE BREWING EQUIPMENT, BEVERAGE MACHINES, ETC.; LOCATE ABOVE WATER METER
16. CANOPY OVERHEAD
17. EYE WASH STATION; REFER TO GN-1.7 FOR SPECIFICATIONS
18. BACKFLOW REVENTER. REFERENCE PLUMBING DRAWINGS
19. SPRINKLER EQUIPMENT. REFERENCE SPRINKLER DRAWINGS. AUTOMATIC FIR SPRINKLER SYSTEM PROVIDED UNDER SEPARATE SUBMITTAL.
20. FIRE RISER SIGNAGE AT CLOSEST DOOR TO SPRINKLER EQUIPMENT. PROVIDE KNOX BOX AS REQUIRED BY THE CITY OF MESA. REFERENCE DETAILS 2 AND 3 THIS SHEET.




Larson Design Group
1000 COMMERCE PARK DRIVE
SUITE 201
WILLIAMSPORT, PA 17701
(877) 323-6603

It is a violation of the law for any person, unless acting under the direction of a licensed Architect, Engineer, or Land Surveyor, to alter an item in any way. Plans, maps, specifications, studies, and reports not containing a black ink seal imprint on the cover sheet accompanied by an original signature by the licensed professional may have been fraudulently altered and shall not be considered an original copy. Copyright Protected 2023, Larson Design Group, Inc.



Exp: 12/31/2025

SEAL



Quality Brand Group
2001 West Main St.
Stamford, CT 06902

REVISIONS	DATE	BY	DESCRIPTION
1	03-20-2023	C	SECOND ROUND PLANNING / DRB COMMENT REVISIONS
2	02-27-2023	B	FIRST ROUND PLANNING / DRB COMMENT REVISIONS
3	01-23-2023	A	PLANNING / DRB SUBMISSION

DUNKIN' DONUTS
263 East McKellips Road, Mesa, AZ

ARCHITECTURAL FLOOR PLAN

PC No.: XXXXX
Date: 02-27-2023
Project No.: 13220-001
Sheet No.: A-1.0

© Larson Design Group 2023