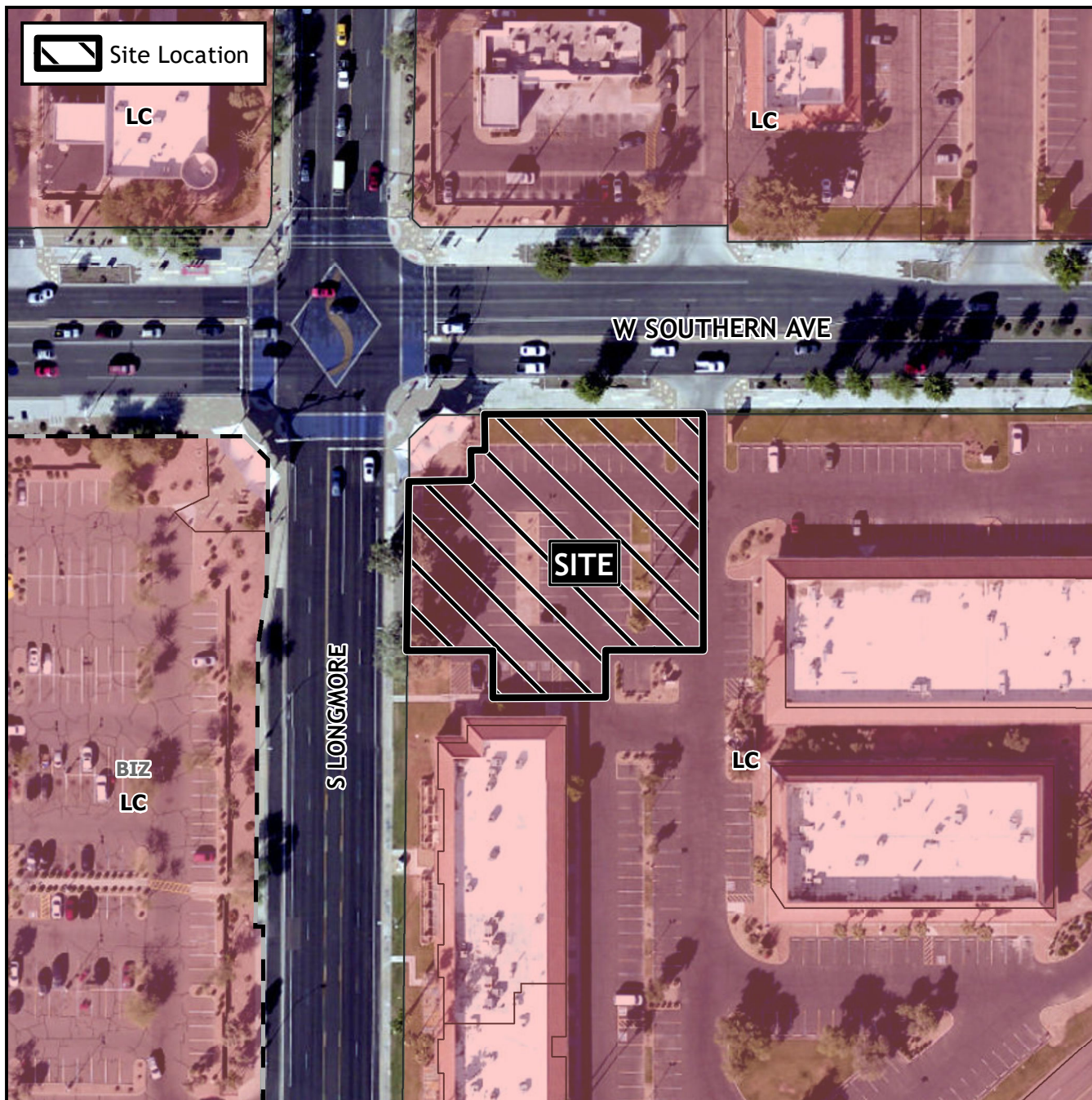


Design Review Vicinity Map: DRB23-00220



Case Details

Case:

DRB23-00220

Site / Address:

(District 3). Within the 1200 block of South Longmore (east side) and within the 1400 block of West Southern Avenue (south side). Located west of Alma School Road on the south side of Southern Avenue. (1± acres).

Request:

Design Review for a medical office development.

