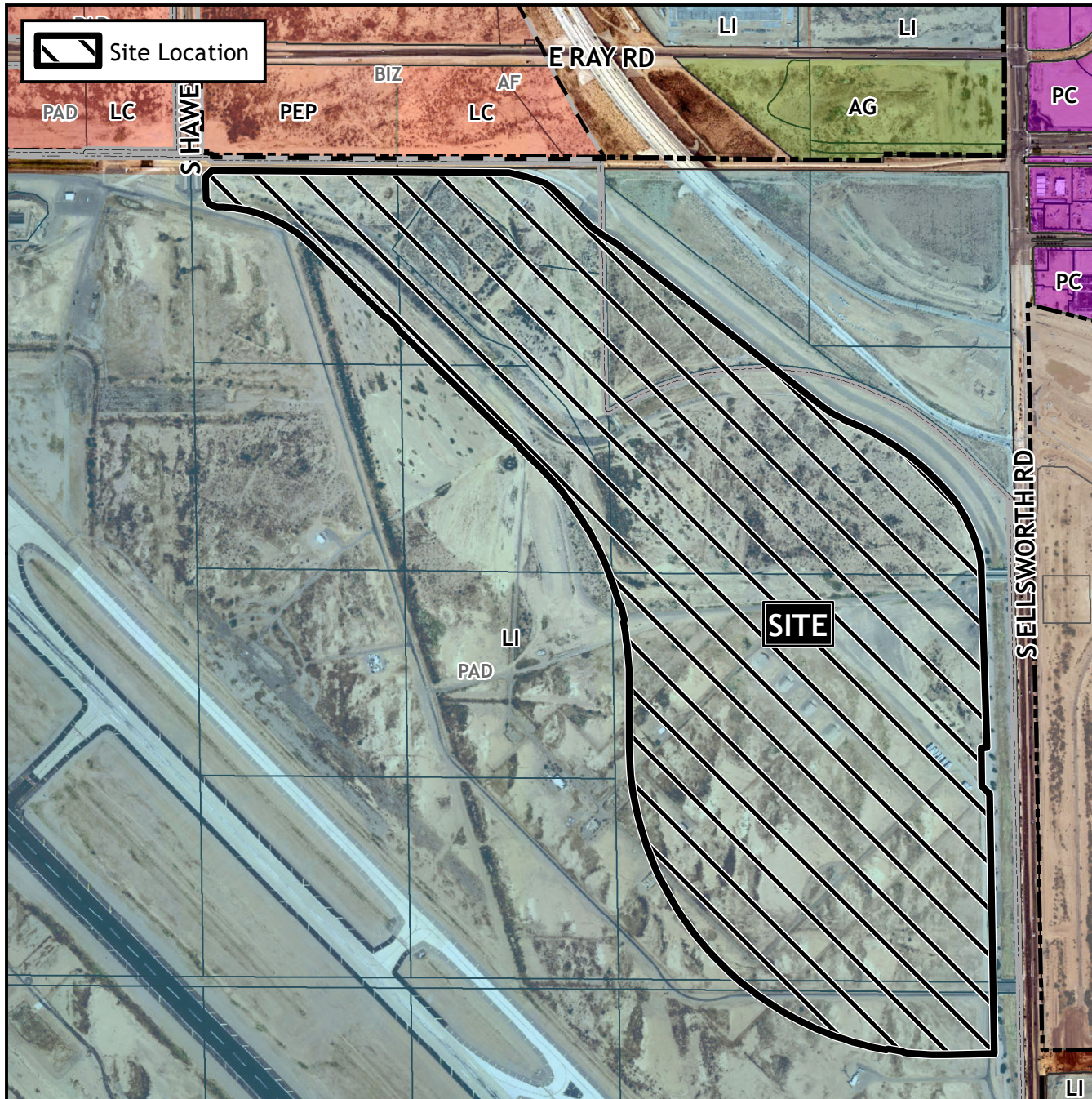


Planning and Zoning Vicinity Map: ZON22-01008



Case Details

CASE:

ZON22-01008

PRE-PLAT : ☐

SITE / ADDRESS:

(District 6). Within the 5300 to 6200 blocks of South Ellsworth Road (west side). Located south of Ray Road and west of Ellsworth Road. (273± acres).

REQUEST:

Rezoning from Light Industrial with a Planned Area Development Overlay (LI-PAD) to Light Industrial with a new Planned Area Development Overlay (LI-PAD) and Council Use Permit to allow for a commercial and industrial development. This request will replace the existing Williams Gateway Industrial Development Master Plan with a new Planned Area Development which will establish unique development standards, allow the proposed project to be phased, and allow for private streets.

