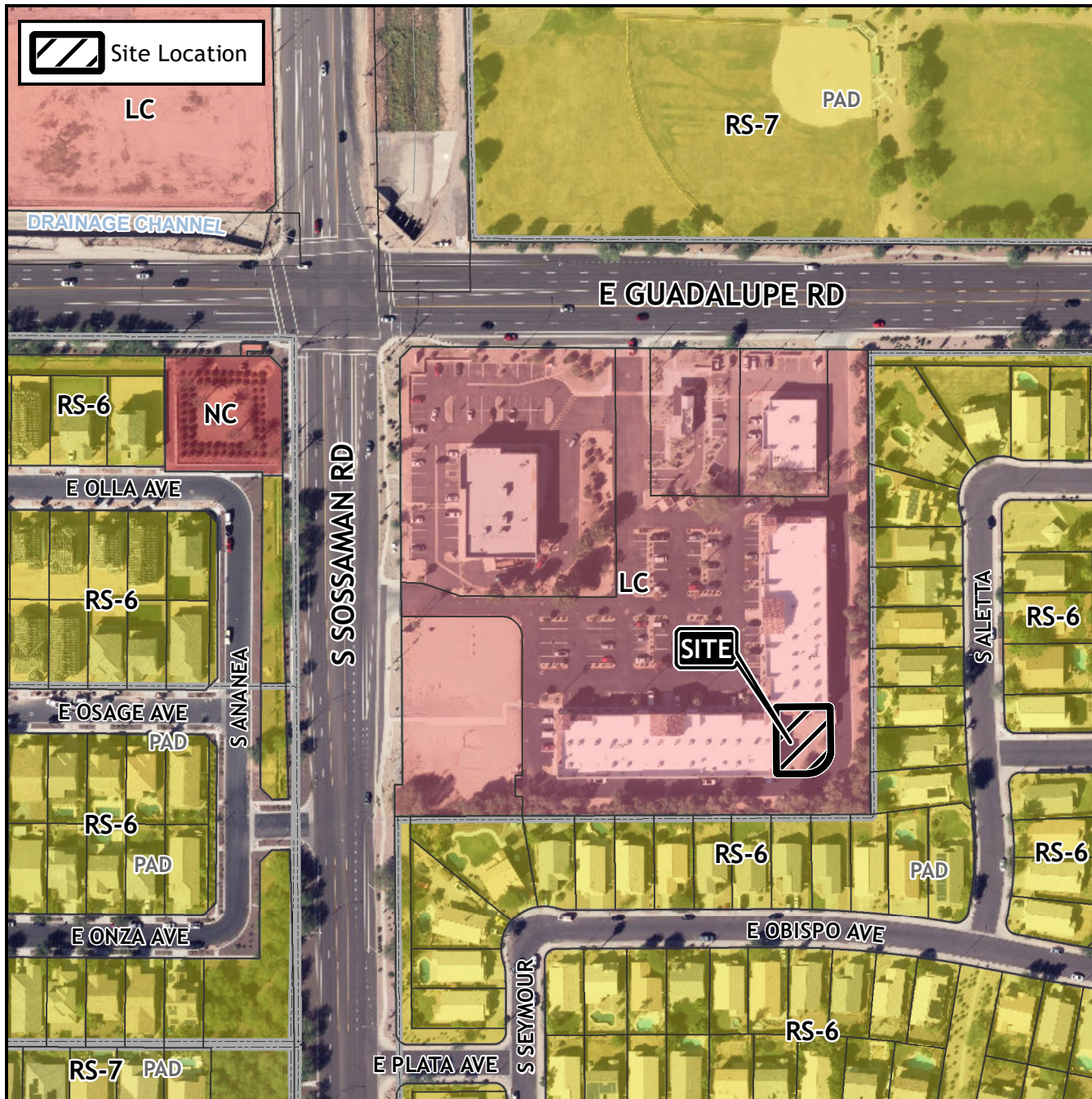


Board of Adjustment Vicinity Map: BOA23-00195



Case Details

Case:

BOA23-00195

Site / Address:

(District 6). Within the 7600 block of East Guadalupe Road and the 2800 block of South Sossaman Road. Located south of East Guadalupe Road and east of South Sossaman Road.

Request:

Requesting a Special Use Permit (SUP) to allow the development of a new freestanding communication facility in the Limited Commercial (LC) zoning district.

