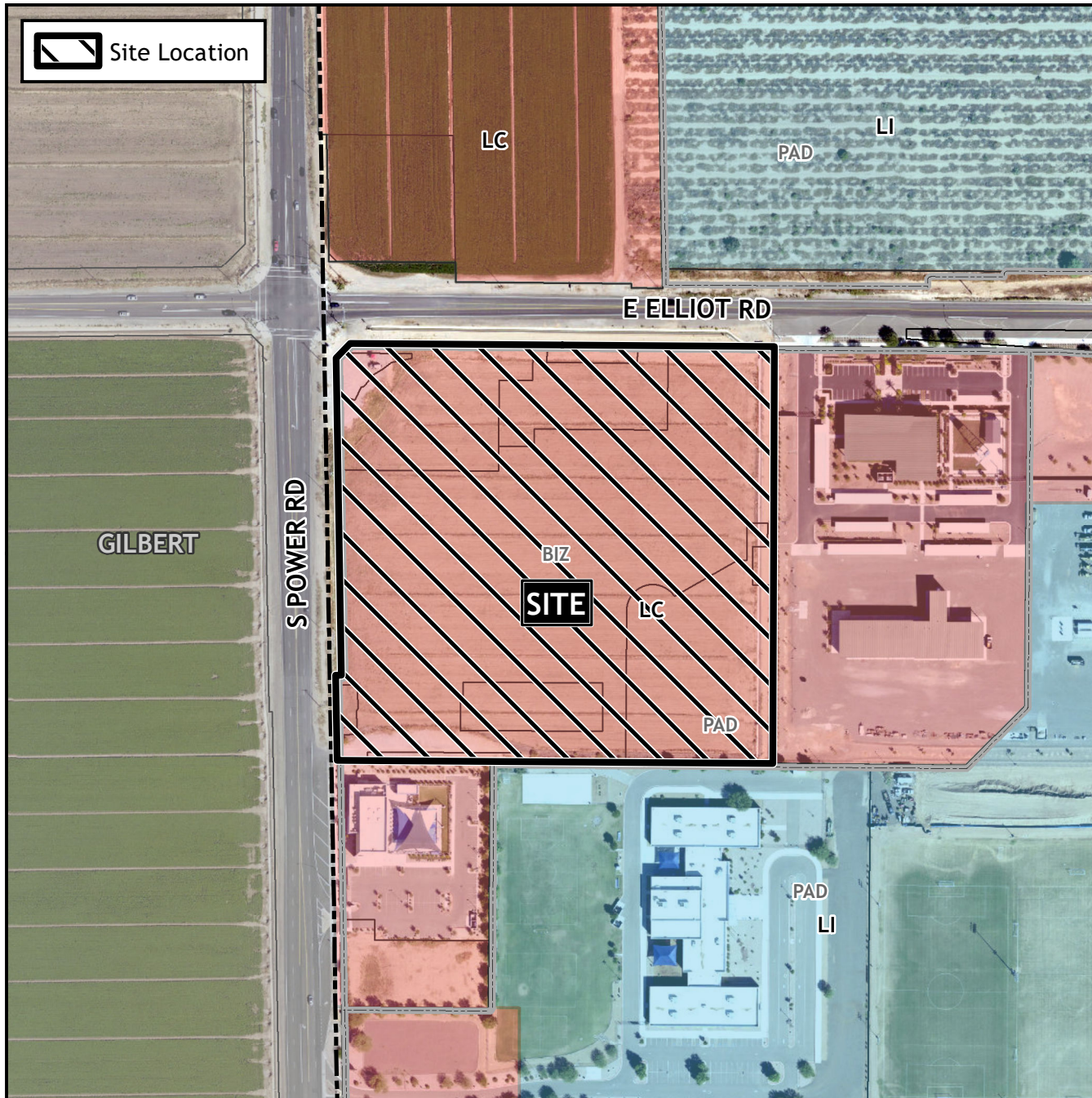


# Planning and Zoning Vicinity Map: ZON22-01271



## Case Details

**CASE:**

ZON22-01271

**PRE-PLAT :** ☐

### SITE / ADDRESS:

(District 6). Within the 6800 to 6900 blocks of East Elliot Road (south side) and within the 3600 to 3700 blocks of South Power Road (east side). Located south of Elliot Road and east of Power Road. (12± acres).

### REQUEST:

Rezone from Limited Commercial with a Planned Area Development overlay and Bonus Intensity Zone overlay (LC-PAD-BIZ) to Limited Commercial (LC) and Site Plan Review.

