



Design Review Board



DRB22-01345

La Mesita Phase 4



Request

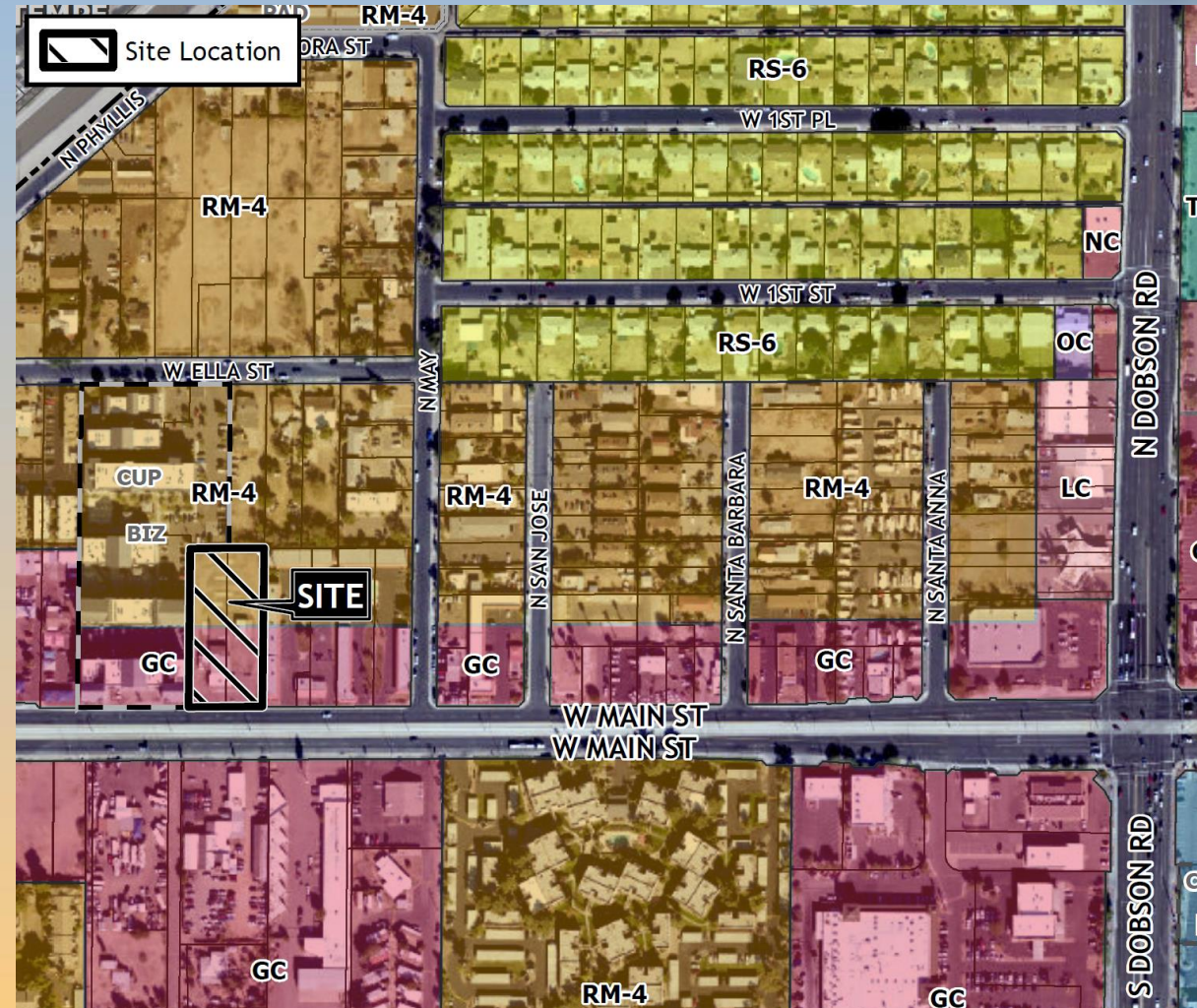
- Design Review
- To allow a Multiple Residence Development





Location

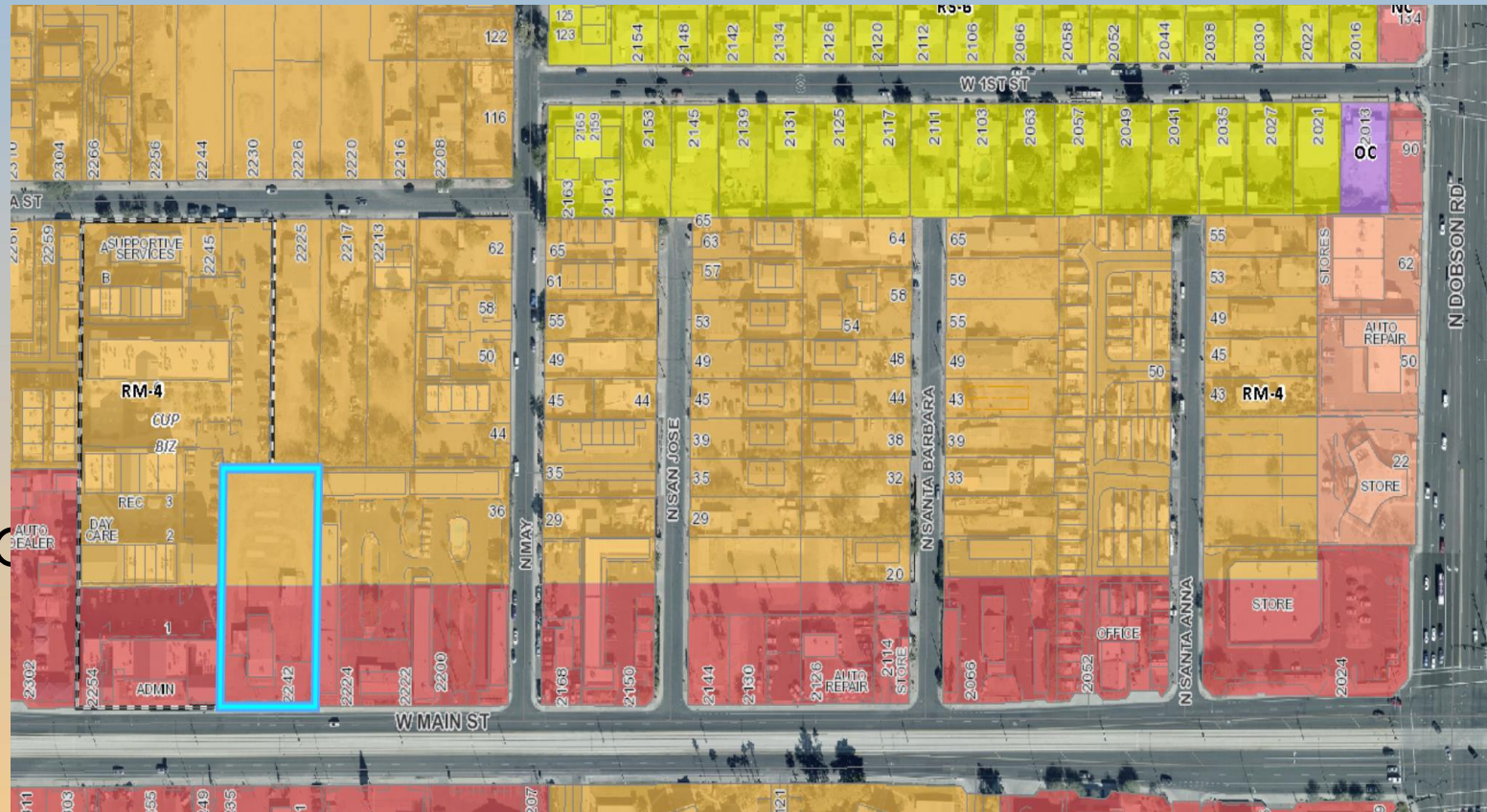
- North side of Main Street
- West of Dobson Road
- Existing La Mesita Phases 1-3 adjacent to the east





Zoning

- Existing General Commercial (GC) and RM-4 Split
- Proposed concurrent rezone to GC with a Council Use permit and Bonus Intensity Zone





Site Photos

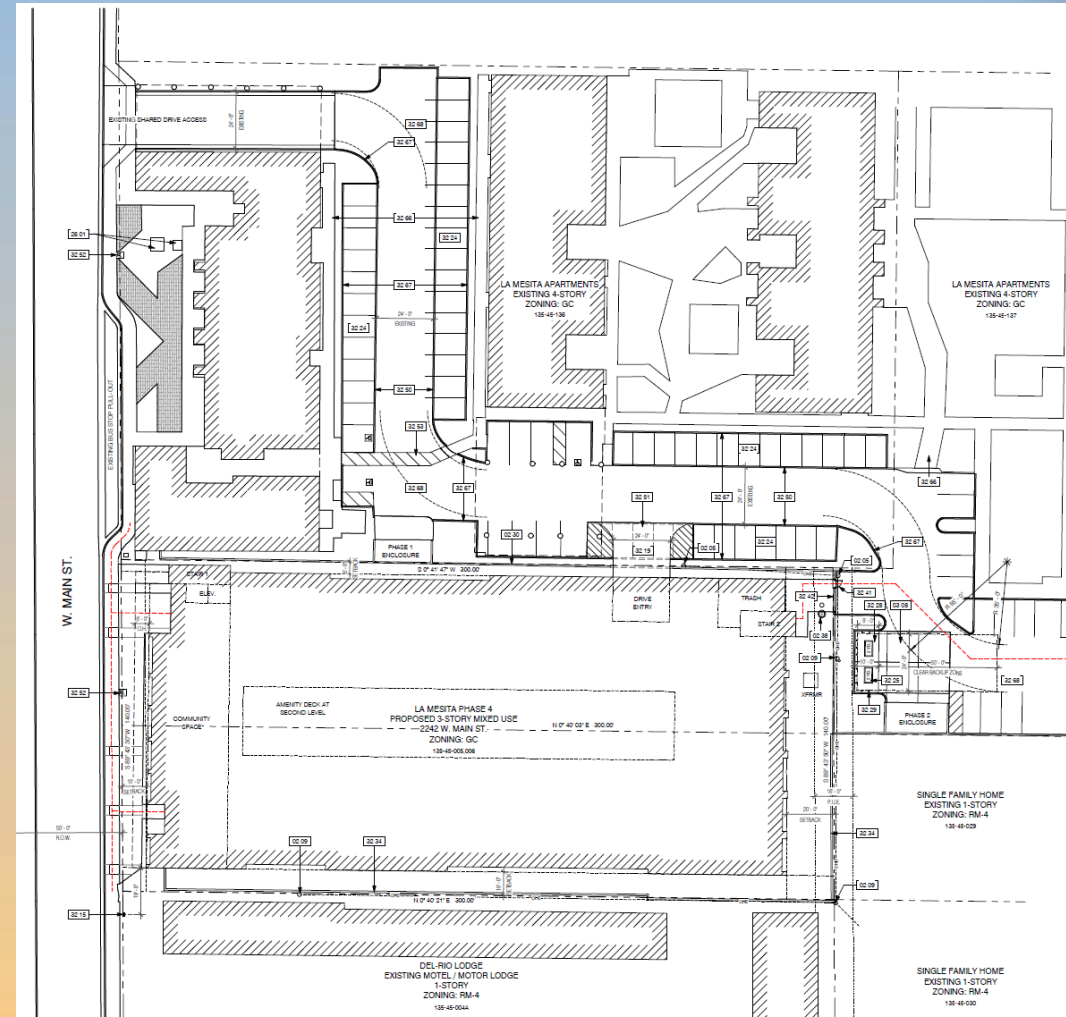


Looking northwest from Main Street



Site Plan

- 1 new proposed structure
- Stacked flat style building, 1st floor parking structure with offices located along Main, with Apartments on the 2nd and 3rd floors

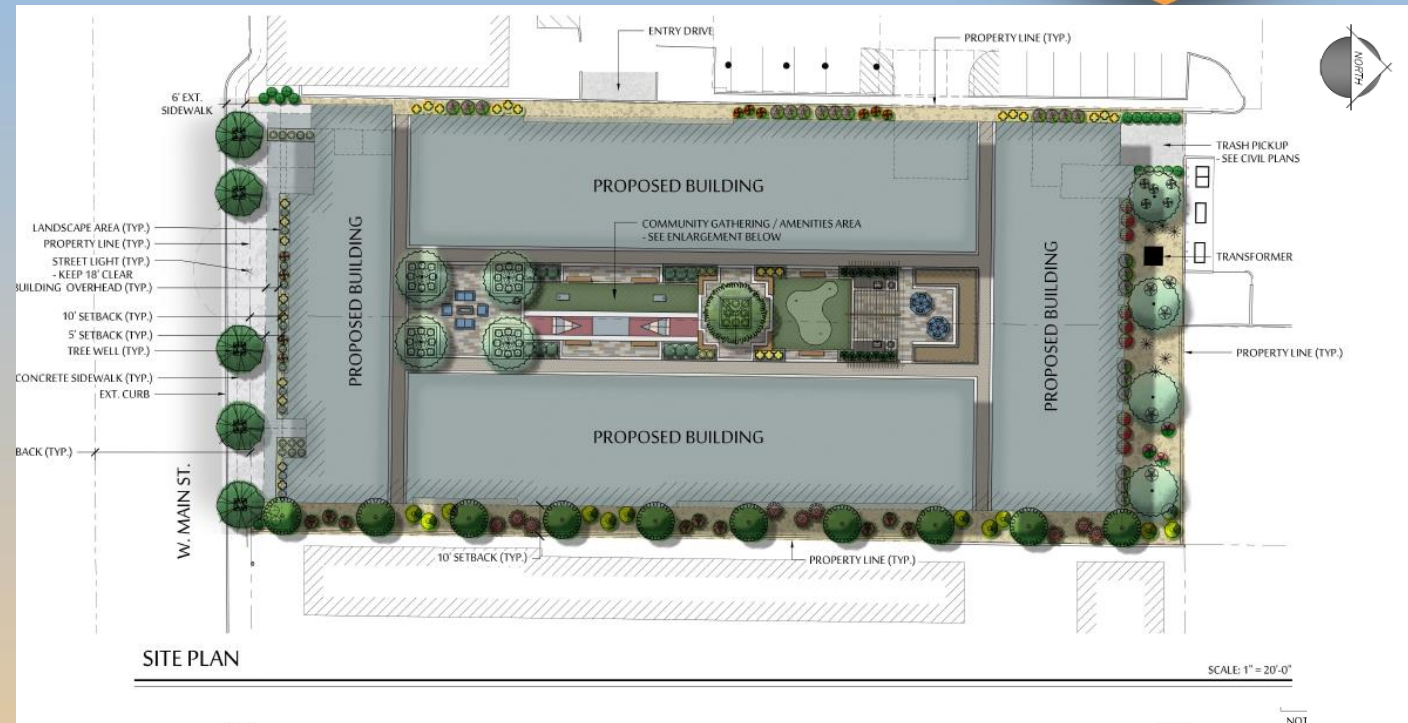




Landscape Plan

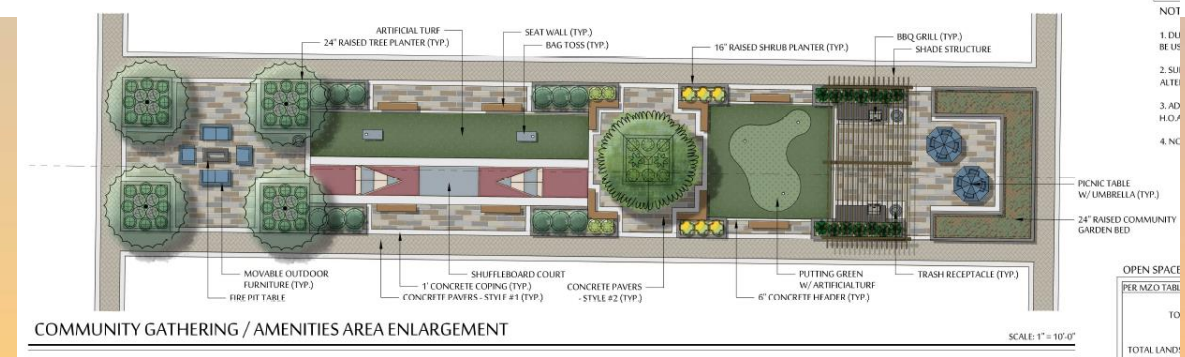
PLANT LEGEND

SYMBOL	BOTANICAL NAME - COMMON NAME	QTY.	SIZE
TREES			
	ACACIA, ANUERA - MULGA	8	24" BOX
	PISTACIA LENTICUS - MASTIC	10	24" BOX
	QUERCUS VIRGINIANA - LIVE OAK	5	24" BOX
	ULMUS PARVIFOLIA - EVERGREEN ELM	1	24" BOX
SHRUBS			
	CALLIANDRA CALIFORNICA - RED FAIRY DUSTER	9	5 GAL.
	LEUCOPHYLLUM FRUTESCENS 'GREEN CLOUD' - TEXAS SAGE	9	5 GAL.
	OLEA EUROPEA 'MONTRA' - 'LITTLE OLLIE' DWARF OLIVE	12	5 GAL.
	RUELLIA PENINSULARIS - DESERT RUELLIA	22	5 GAL.
	RUSSELLIA EQUISETIFORMIS - CORAL FOUNTAIN	9	5 GAL.
	TECOMA STANS - YELLOW BELLS	12	5 GAL.
ACCENTS			
	ALOE VERA - MEDICINAL ALOE	2	5 GAL.
	BOUTELOUA GRACILIS - BLONDE AMBITION	27	5 GAL.
	EUPHORBIA ANTISYPHILITICA - CANDELLIA	17	5 GAL.
	DASYLIRION WHEELERI - DESERT SPOON	6	5 GAL.
	HESPERALOE PARVIFLORA 'PERPA' - BRAKELIGHTS RED YUCCA	15	5 GAL.
	LOPHOCEREUS MARGINATUS - MEXICAN FENCE POST CACTUS	16	5 GAL.
	MUHLENBERGIA CAPILLARIS 'LENCA' - REGAL MIST PINK MUHLY	8	5 GAL.
	PORTULACARIA AFRA - ELEPHANT FOOD	32	5 GAL.
	YUCCA RUPICOLA - TWISTED LEAF YUCCA	14	5 GAL.
GROUND COVERS			
	LANTANA MONTEVIDENSIS - PURPLE TRAILING LANTANA	20	5 GAL.
	RUELLIA BRITTONIANA 'KATIE' - DWARF BRITISH RUELLIA	16	5 GAL.
	WEDELIA TRILOBATA - YELLOW DOT	20	5 GAL.
	3/4" SCREENED DECOMPOSED GRANITE - 2" MIN. DEPTH COLOR: TO BE DETERMINED	7,965 SQ. FT.	



SITE PLAN

SCALE: 1" = 20'-0"



COMMUNITY GATHERING / AMENITIES AREA ENLARGEMENT

SCALE: 1" = 10'-0"



Elevations



MATERIAL LEGEND

- | | | |
|-----|--|--|
| [A] | | PAINT COLOR
MANUF: DUINN EDWARDS
COLOR: DEW381 DROPLETS |
| [B] | | SECONDARY PAINT COLOR
MANUF: DUINN EDWARDS
COLOR: DE6227 MUSLIN |
| [C] | | ACCENT PAINT COLOR
MANUF: DUINN EDWARDS
COLOR: DE6227 MUSLIN |
| [D] | | ACCENT PAINT COLOR
MANUF: DUINN EDWARDS
COLOR: DE6364 CAVERIOUS |
| [E] | | 8" X 8" X 16" CMU, STACKED BOND
MANUF: BOHELMON MASONRY
STYLE: MEGASTONE
COLOR: MALIBU SAND |
| [F] | | BRICK VENEER
MANUF: INTERSTATE BRICK
STYLE: MATTE, 2 1/4" NORMAN
COLOR: CANYON ROSE |
| [G] | | 7/8" CORRUGATED METAL PANEL
MANUF: WESTERN STATES
COLOR: PAINTED RUSTED |
| [H] | | PAINT COLOR
MANUF: DUINN EDWARDS
COLOR: MATCH CORR. METAL |
| [J] | | VINYL WINDOW UNIT
MANUF: AVANTI INDUSTRIES, LLC
COLOR: BLACK |

1 SOUTH COLORED ELEVATION
1/8" = 1'-0"



Elevations



MATERIAL LEGEND

[A]	PAIN T COLOR MANUF: DUNN EDWARDS COLOR: DEW381 DROPLETS
[B]	SECONDARY PAIN T COLOR MANUF: DUNN EDWARDS COLOR: DE627 MUSLIN
[C]	ACCENT PAIN T COLOR MANUF: DUNN EDWARDS COLOR: DE627 MUSLIN
[D]	ACCENT PAIN T COLOR MANUF: DUNN EDWARDS COLOR: DE6364 CAVERNOUS
[E]	8" X 8" X 16" CMU, STACKED BOND MANUF: ECHOLON MASONRY STYLE: MESASTONE COLOR: MALIBU SAND
[F]	BRICK VENEER MANUF: INTERSTATE BRICK STYLE: MATTE, 2 1/4" NORMAN COLOR: CANYON ROSE
[G]	7/8" CORRUGATED METAL PANEL MANUF: WESTERN STATES COLOR: PAINTED RUSTED
[H]	PAIN T COLOR MANUF: DUNN EDWARDS COLOR: MATCH CORR. METAL
[J]	VINYL WINDOW UNIT MANUF: AVANTI INDUSTRIES, LLC COLOR: BLACK

2 NORTH COLORED ELEVATION
1/8" = 1'-0"



Elevations



MATERIAL LEGEND	
[A]	PAINT COLOR MANUF: DUNN EDWARDS COLOR: DEW881 DROPLETS
[B]	SECONDARY PAINT COLOR MANUF: DUNN EDWARDS COLOR: DE6227 MUSLIN
[C]	ACCENT PAINT COLOR MANUF: DUNN EDWARDS COLOR: DE6227 MUSLIN
[D]	ACCENT PAINT COLOR MANUF: DUNN EDWARDS COLOR: DE6364 CAVERNOUS
[E]	8" X 8" X 1/8" CMU, STACKED BOND MANUF: SCHERON MASONRY STYLE: MESASTONE COLOR: MALIBU SAND
[F]	BRICK, VENEER MANUF: INTERSTATE BRICK STYLE: MATTE, 2 1/4" NORMAN COLOR: CANYON ROSE
[G]	7/8" CORRUGATED METAL PANEL MANUF: WESTERN STATES COLOR: PAINTED RUSTED
[H]	PAINT COLOR MANUF: DUNN EDWARDS COLOR: MATCH CORR. METAL
[I]	VINYL WINDOW UNIT MANUF: AVANTI INDUSTRIES, LLC COLOR: BLACK



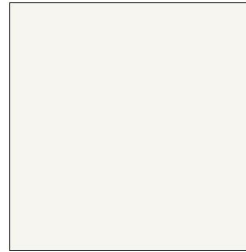
Elevations



MATERIAL LEGEND	
[A]	PAINT COLOR MANUF: DUNN EDWARDS COLOR: DEW881 DROPLETS
[B]	SECONDARY PAINT COLOR MANUF: DUNN EDWARDS COLOR: DE8227 MUSLIN
[C]	ACCENT PAINT COLOR MANUF: DUNN EDWARDS COLOR: DE8227 MUSLIN
[D]	ACCENT PAINT COLOR MANUF: DUNN EDWARDS COLOR: DE8364 CAVERNOUS
[E]	8" X 8" X 1/8" CMU, STACKED BOND MANUF: SCHLICK MASONRY STYLE: MESAGSTONE COLOR: MALIBU SAND
[F]	BRICK, VENEER MANUF: INTERSTATE BRICK STYLE: MATTE, 2 1/4" NORMAN COLOR: CANYON ROSE
[G]	7/8" CORRUGATED METAL PANEL MANUF: WESTERN METAL COLOR: PAINTED RUSTED
[H]	PAINT COLOR MANUF: DUNN EDWARDS COLOR: MATCH CORR. METAL
[I]	VINYL WINDOW UNIT MANUF: AVANT II INDUSTRIES, LLC COLOR: BLACK

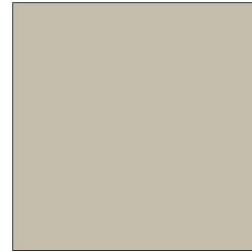


Colors and Materials



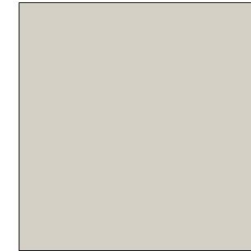
Primary Paint Color

Manufacturer: Dunn Edwards
Color: DEW381 Droplets



Secondary Paint Color

Manufacturer: Dunn Edwards
Color: DE6234 Serene Thought



Accent Paint Color

Manufacturer: Dunn Edwards
Color: DE6227 Muslin



Accent Paint Color

Manufacturer: Dunn Edwards
Color: DE6364 Cavernous



8"x8"x16" Concrete Masonry Units

Manufacturer: Echelon Masonry
Style: Mesastone, Stacked Bond
Color: Malibu Sand



Corrugated Metal Panel

Manufacturer: Western States Metal
Style: 7/8" Corrugated Panel
Color: Painted Rusted



Brick Veneer

Manufacturer: Interstate Brick
Style: Matte Finish, 2 1/4" Norman
Color: Canyon Rose



Findings

Staff is seeking your review and recommendation on the following:

- ✓ Proposed building elevations

Staff welcomes any feedback



Design Review Board