



# Design Review Board



# DRB22-01277

## Brickyards on Ellsworth





# Request

- Design Review
- Industrial park

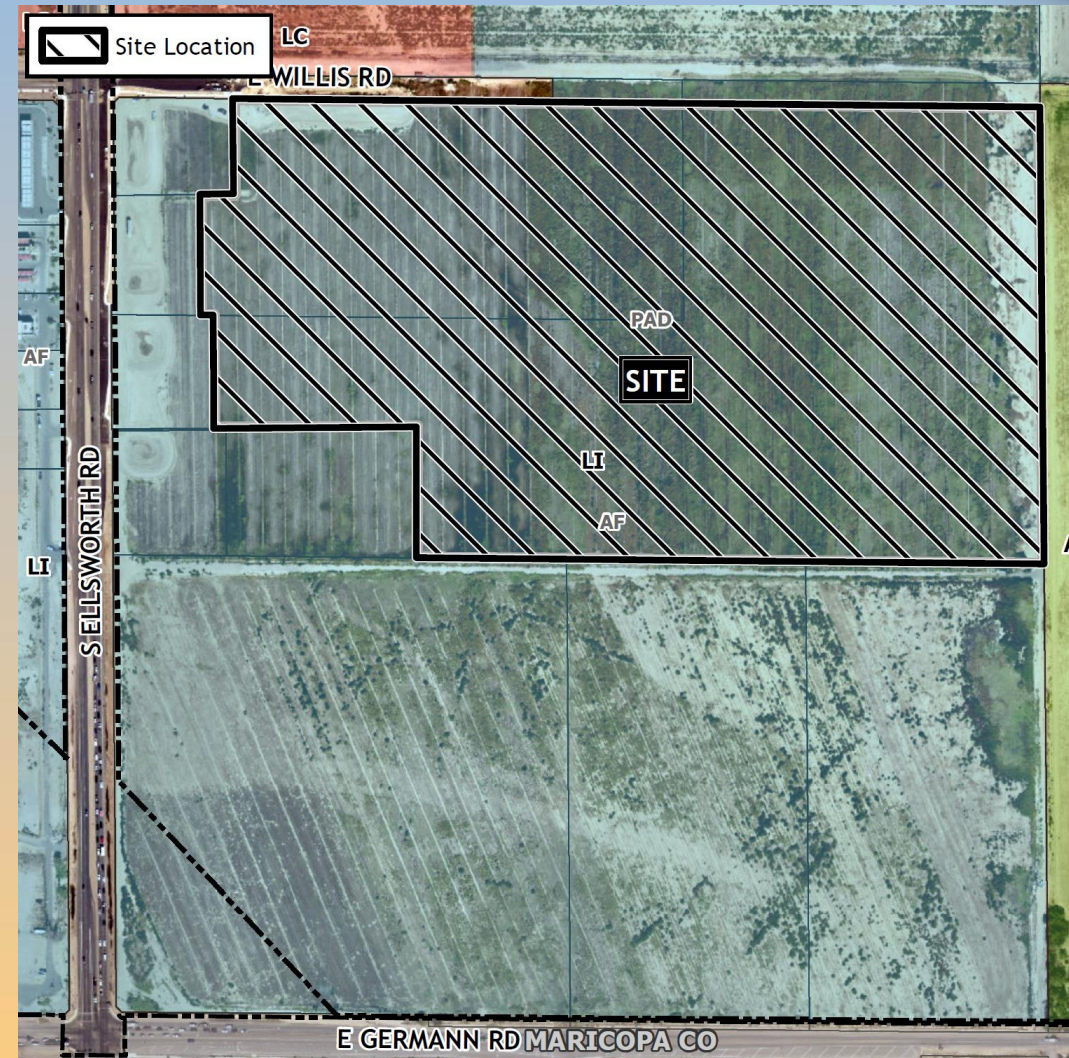






# Location

- South of Willis Road
- East of Ellsworth Road
- North of Germann Road







# Zoning

- Light Industrial with a Planned Area Development Overlay (LI-PAD)







# Site Photos



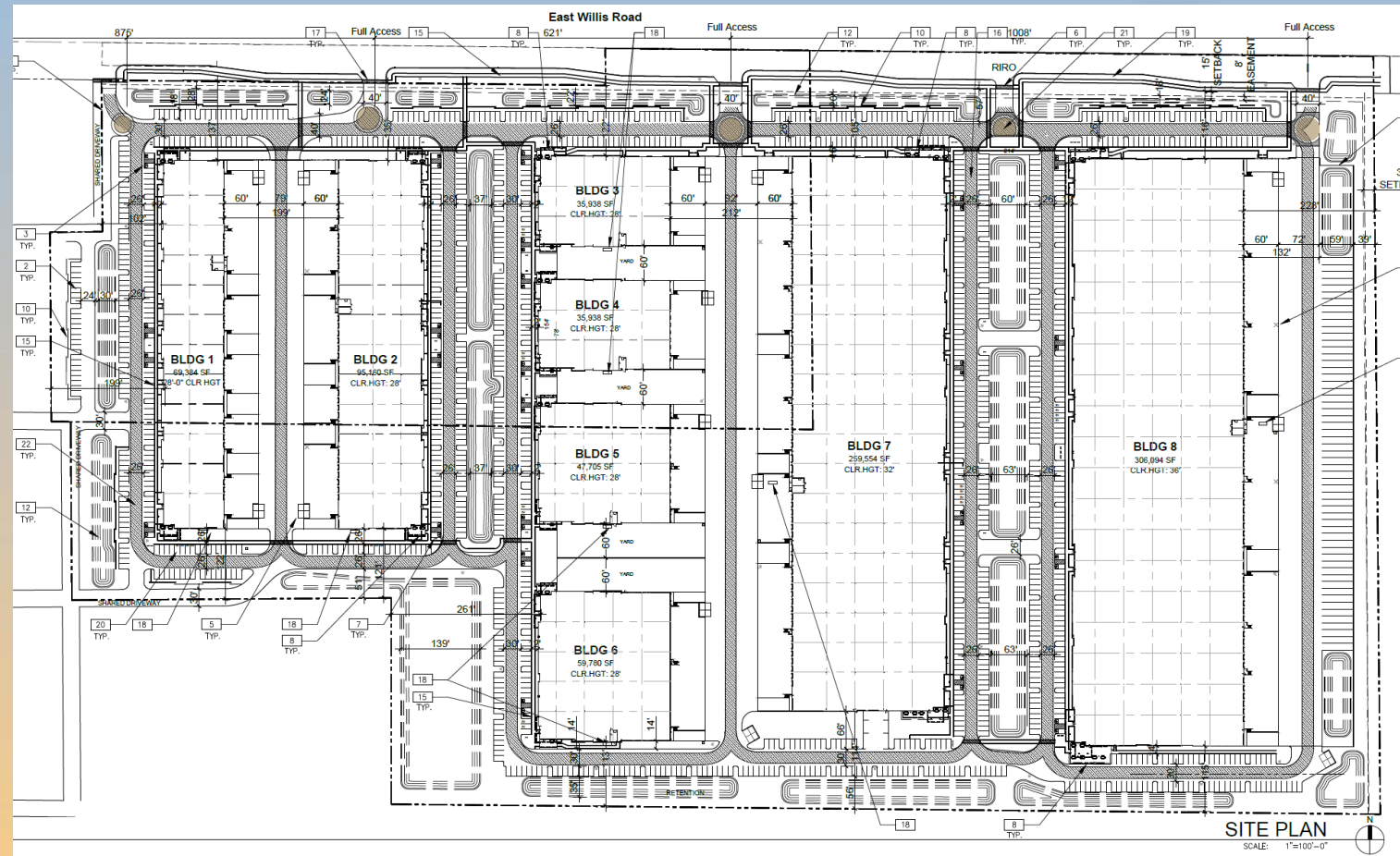
Looking east from Ellsworth Road





# Site Plan










- 8 industrial buildings, 35,938 – 306,094 SF
- Access from Willis Road & shared from Ellsworth
- Truck docks and loading in rear of buildings

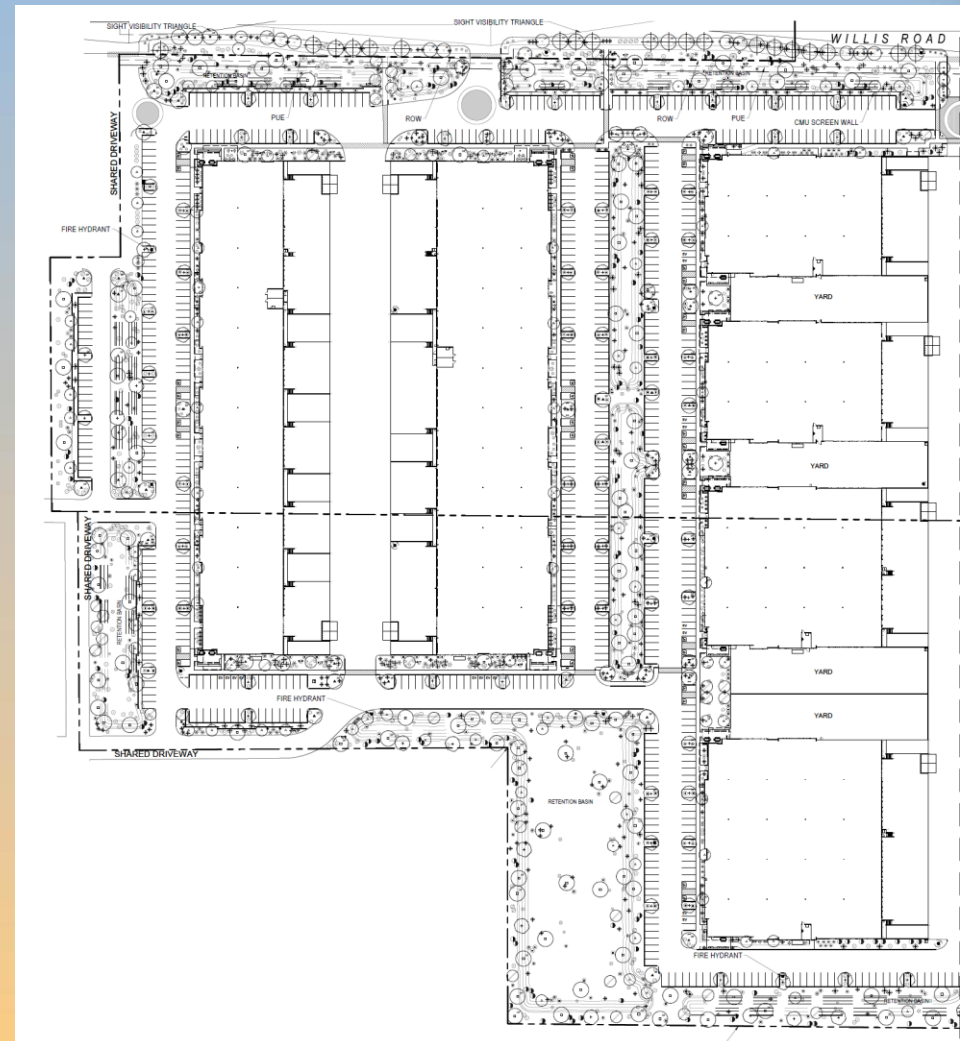




# Landscape Plan

## PLANT MATERIAL SCHEDULE

SYMBOL	BOTANICAL NAME
TREES	COMMON NAME
	<i>Chitalpa tashkentensis</i> Chitalpa
	<i>Pistachia</i> x 'Red Push' Red Push Pistache
	<i>Prosopis chilensis</i> Chilean "Thornless" Mesquite
	<i>Ulmus parvifolia</i> Evergreen Elm
	<i>Quercus Virginiana</i> Live Oak
	<i>Acacia aneura</i> Mulga
ACCENT TREES	
	<i>Caesalpinia mexicana</i> Mexican Bird of Paradise
	<i>Chilopsis linearis</i> 'Bubba' Bubba Desert Willow
	<i>Sophora secundiflora</i> Texas Mountain Laurel



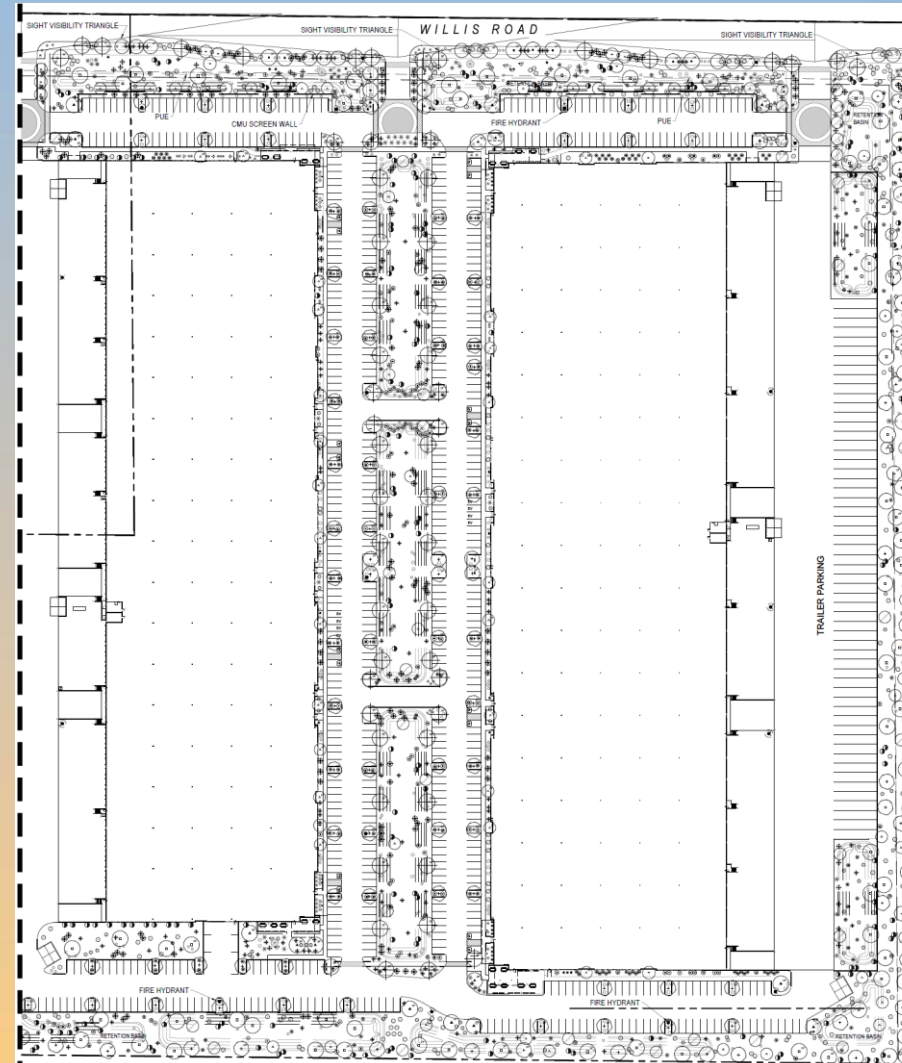




# Landscape Plan

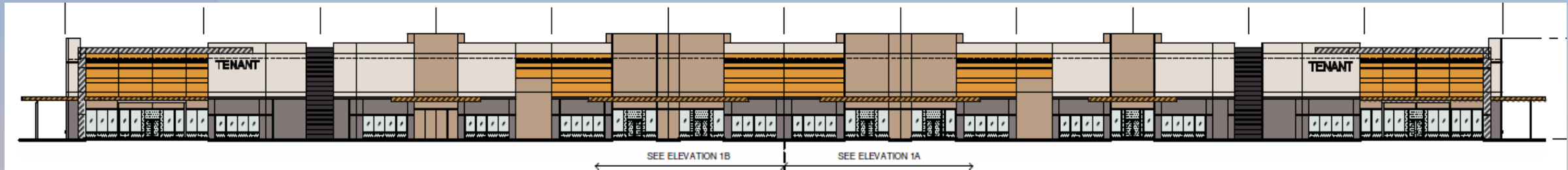
## PLANT MATERIAL SCHEDULE

SYMBOL	BOTANICAL NAME
TREES	COMMON NAME
	<i>Chitalpa tashkentensis</i> Chitalpa
	<i>Pistachia</i> x 'Red Push' Red Push Pistache
	<i>Prosopis chilensis</i> Chilean "Thornless" Mesquite
	<i>Ulmus parvifolia</i> Evergreen Elm
	<i>Quercus Virginiana</i> Live Oak
	<i>Acacia aneura</i> Mulga
ACCENT TREES	
	<i>Caesalpinia mexicana</i> Mexican Bird of Paradise
	<i>Chilopsis linearis</i> 'Bubba' Bubba Desert Willow
	<i>Sophora secundiflora</i> Texas Mountain Laurel

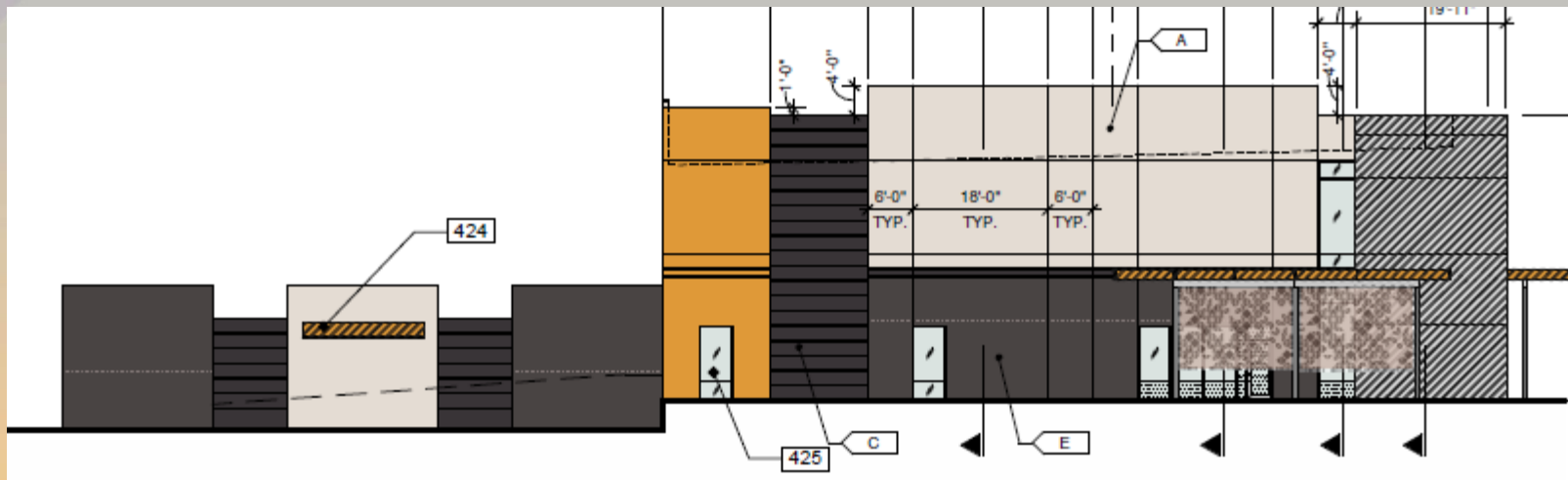




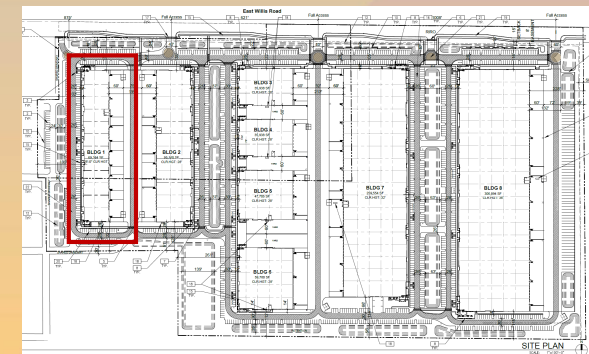
# Elevations – Building 1



West



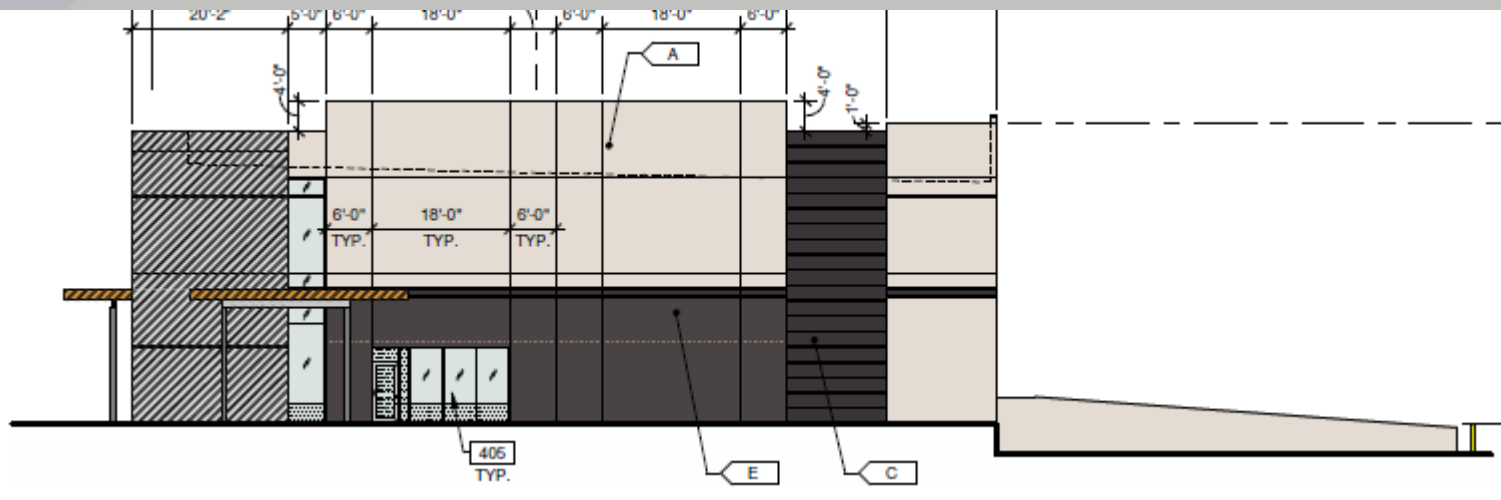
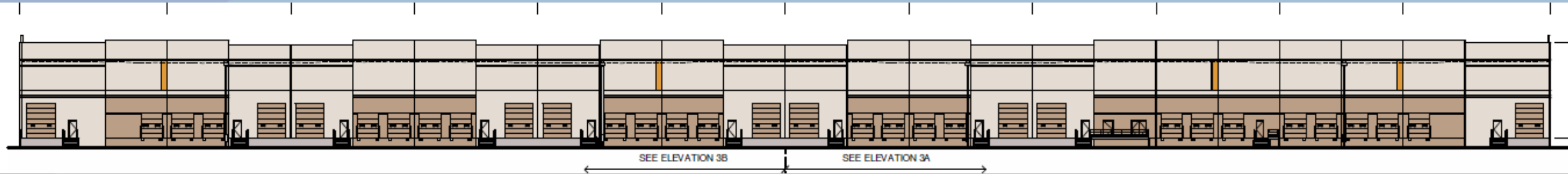
North





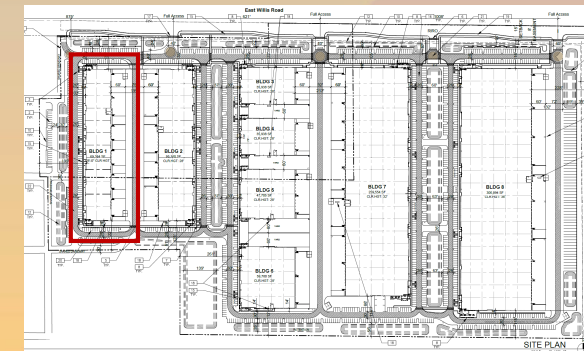


# Elevations – Building 1



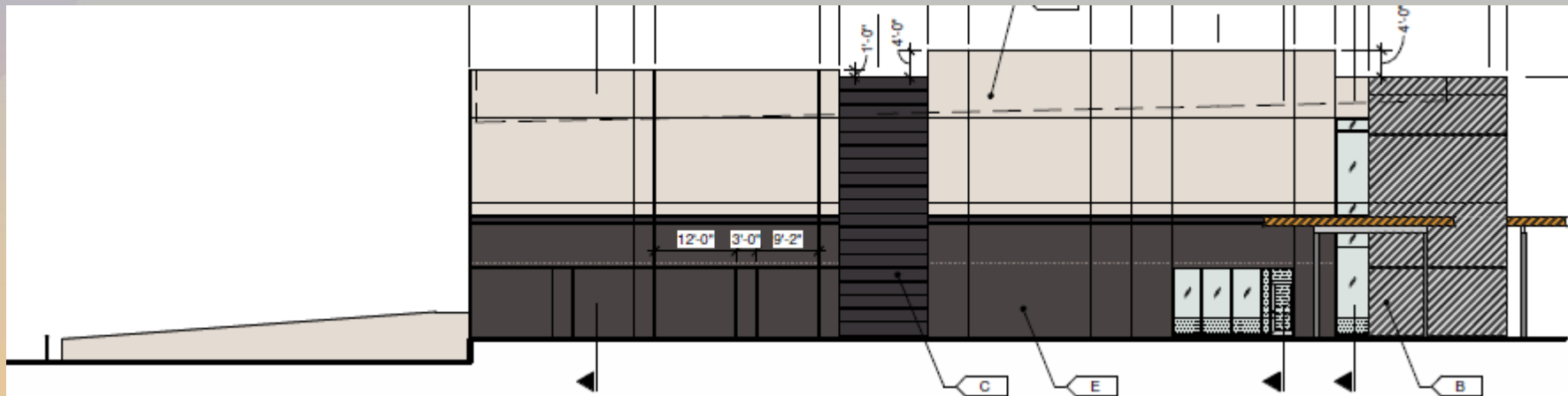
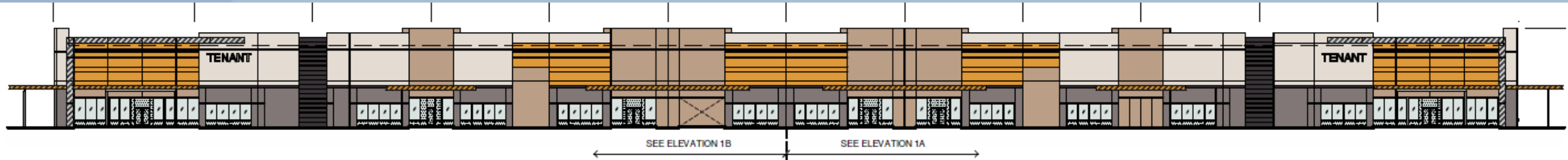
East

South



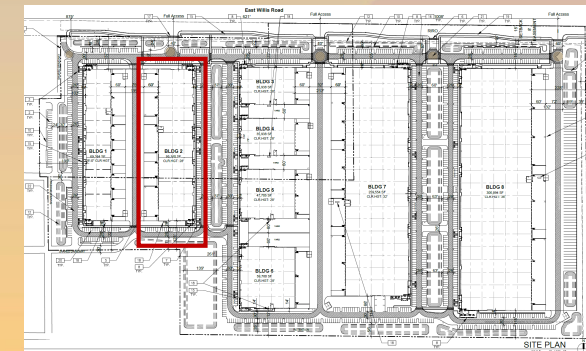


# Elevations – Building 2



East

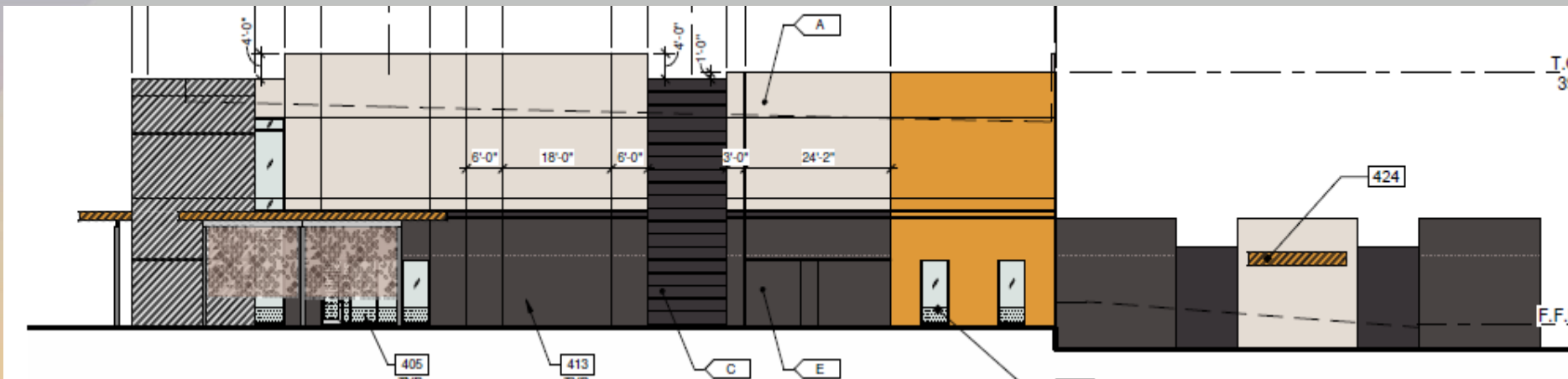
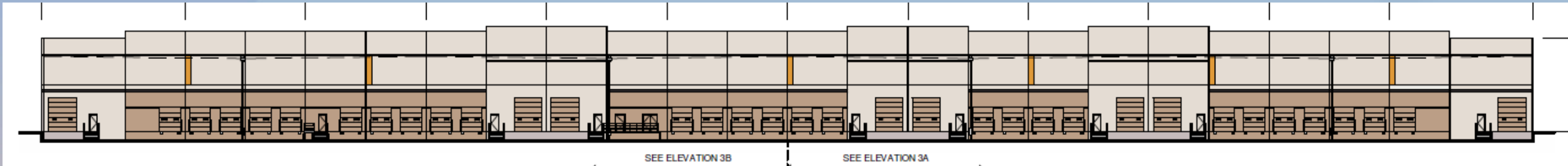
South





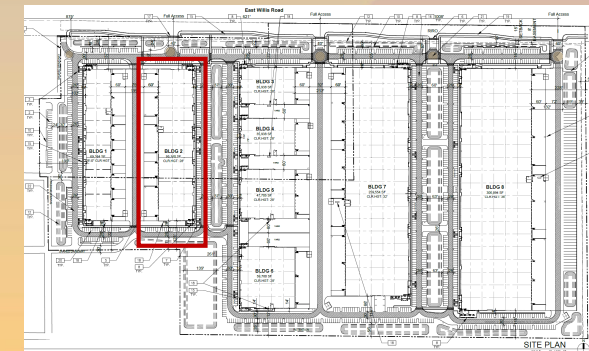


# Elevations – Building 2



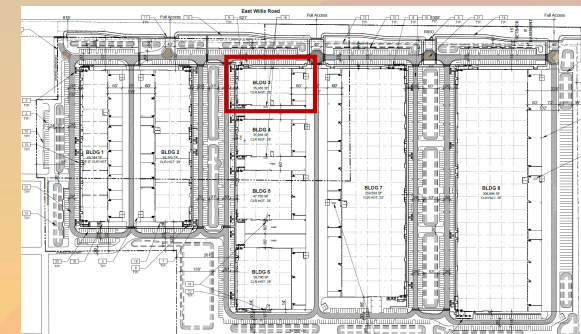
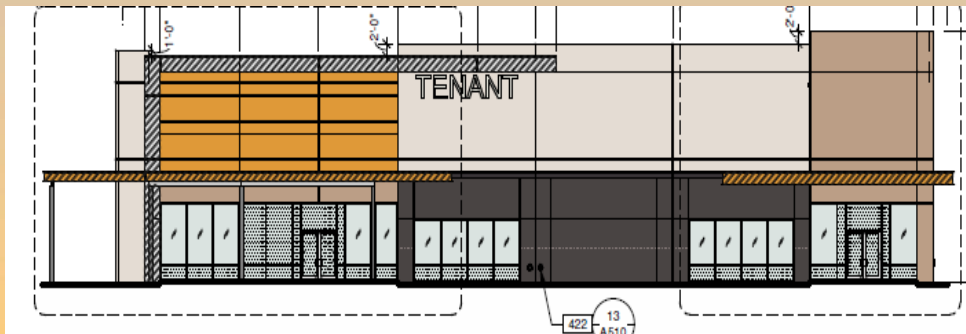
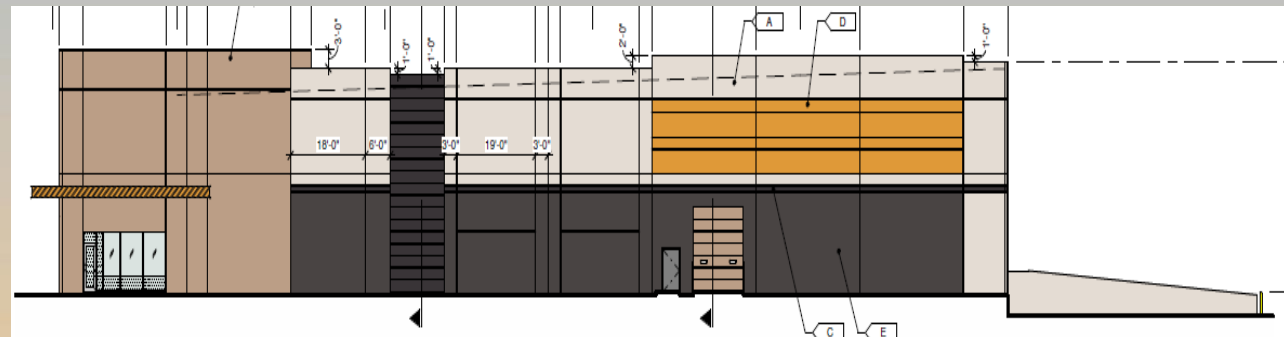
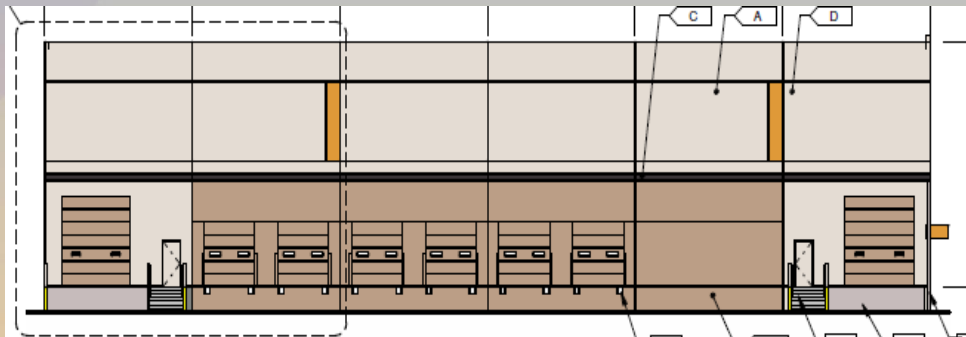
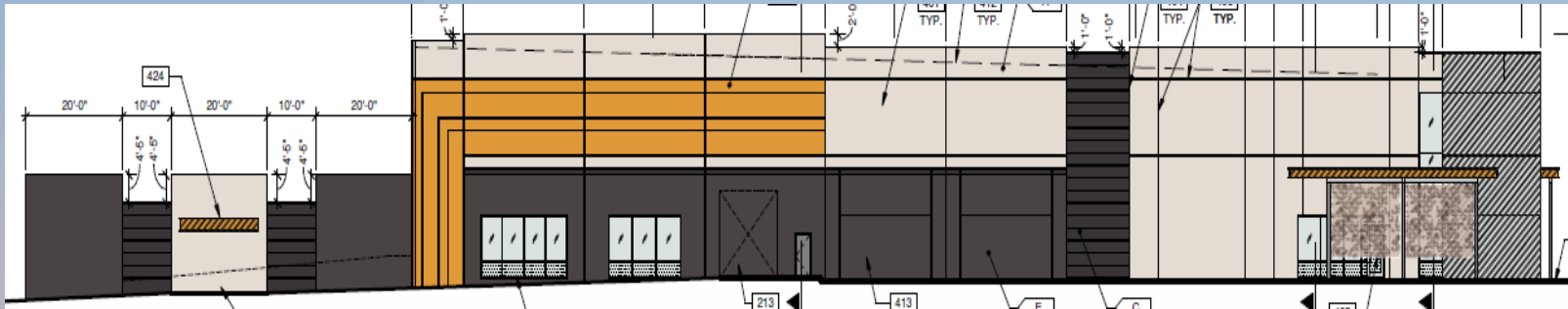
West

North





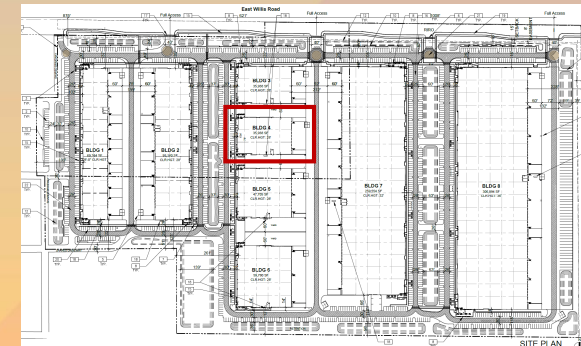
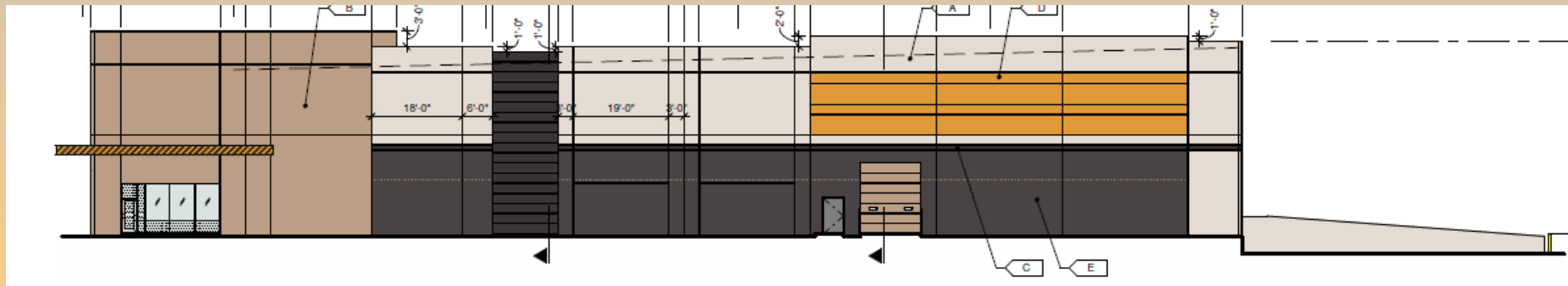
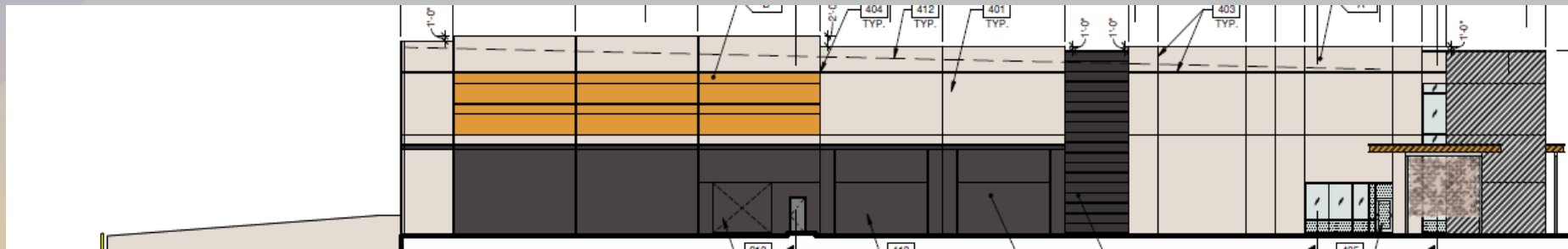
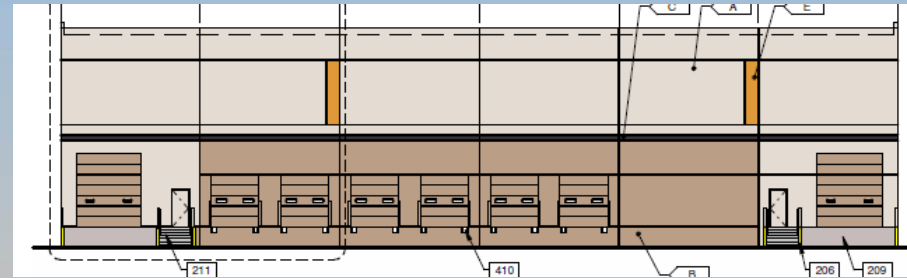
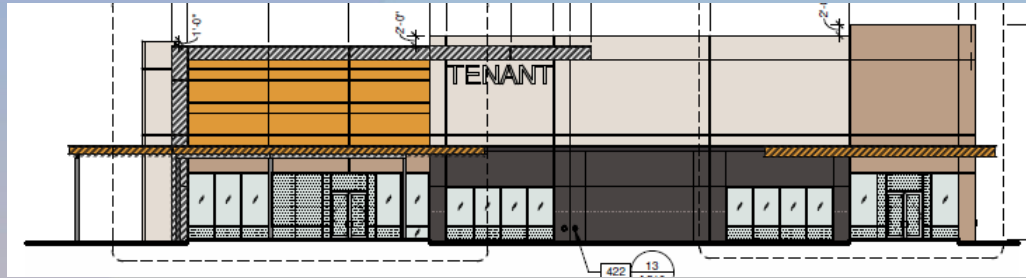
# Elevations – Building 3





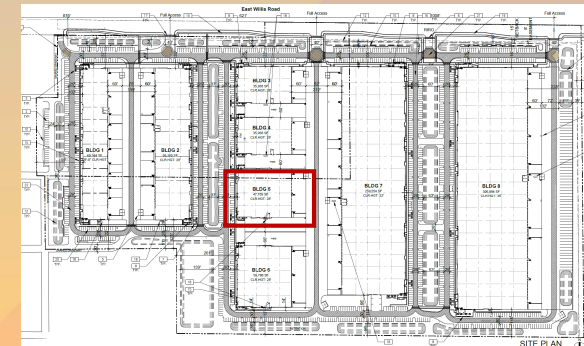
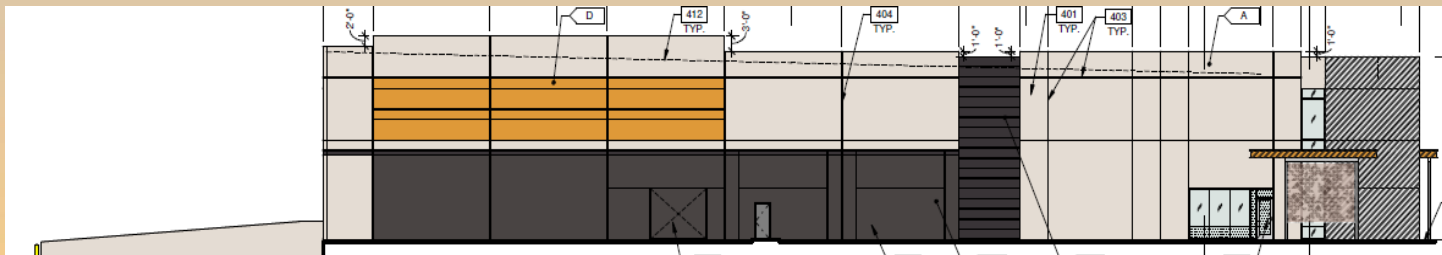
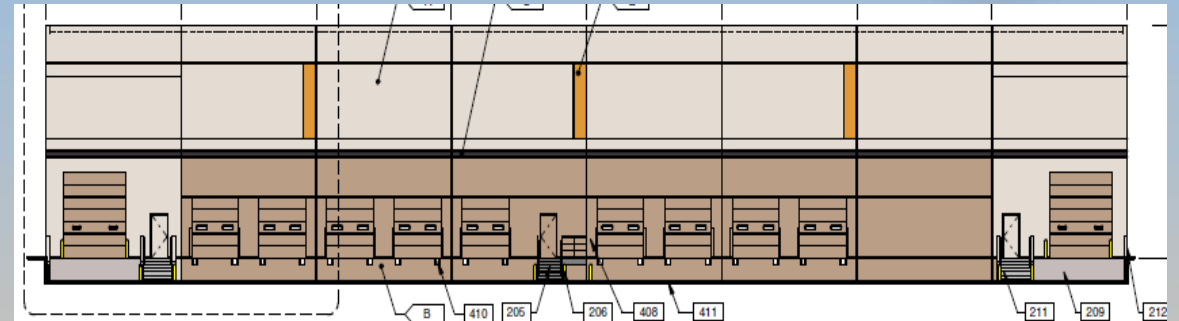


# Elevations – Building 4





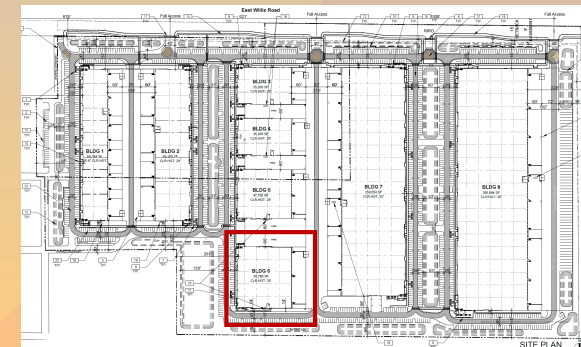
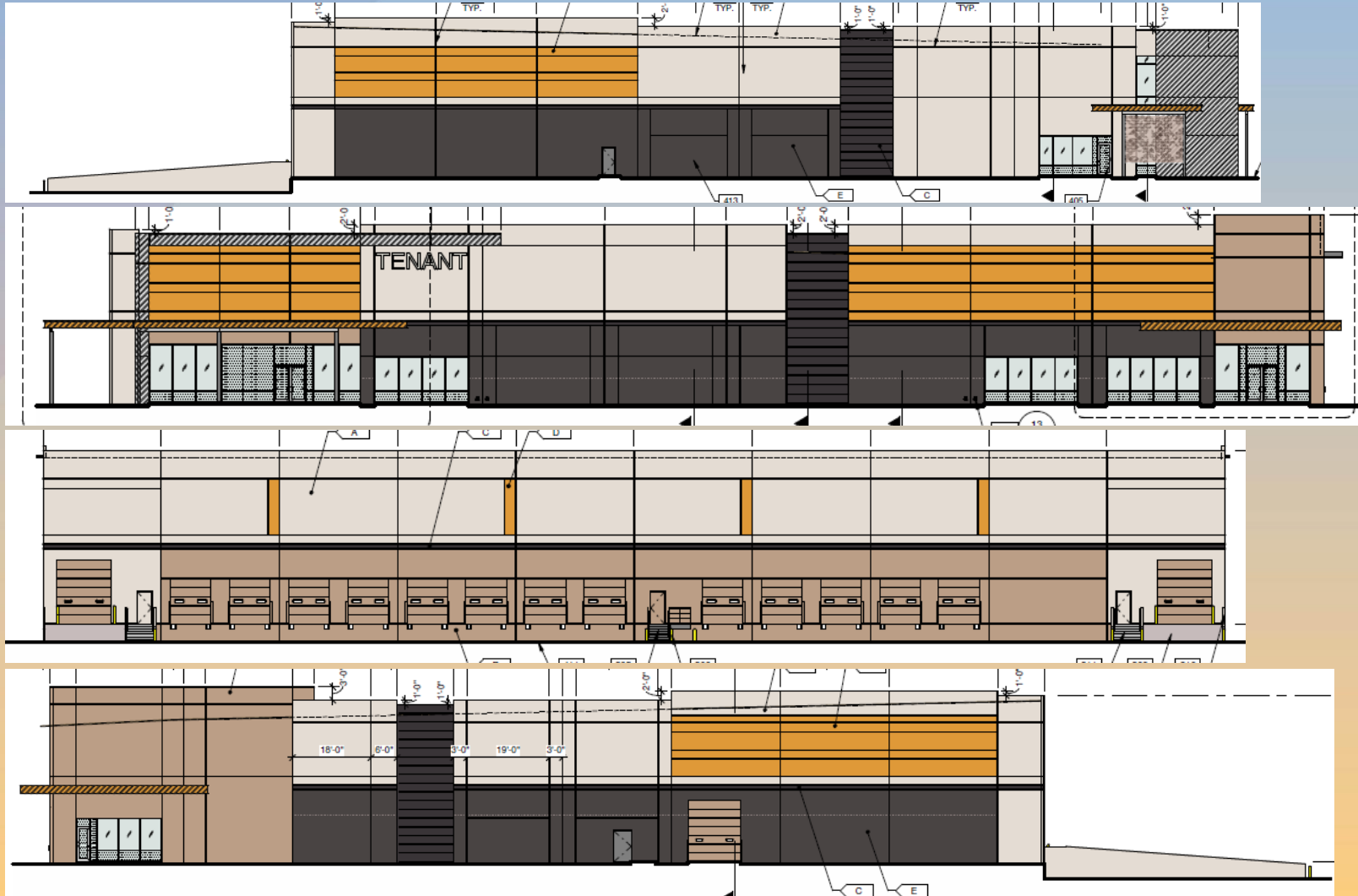
# Elevations – Building 5







# Elevations – Building 6

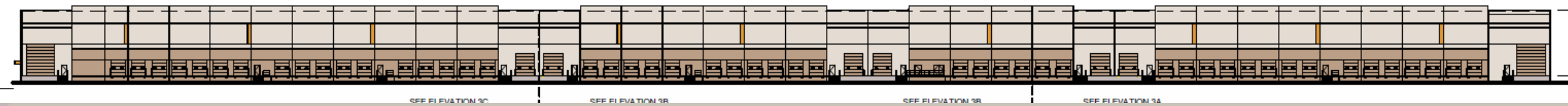




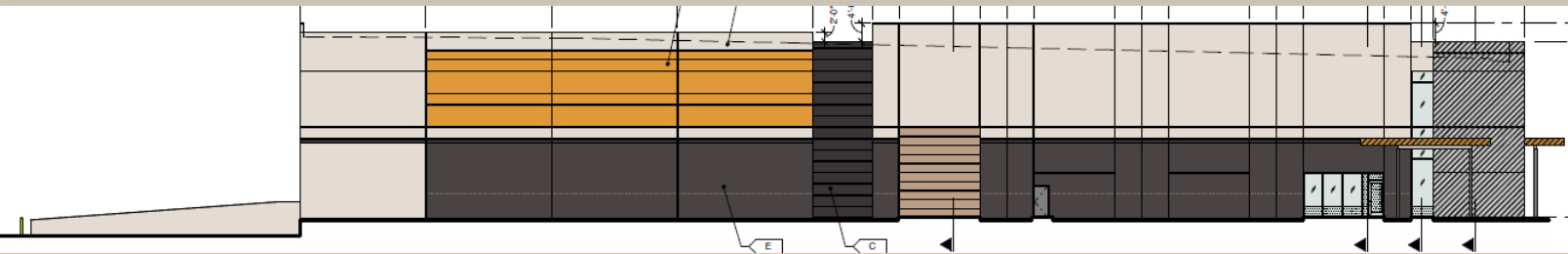
# Elevations – Building 7



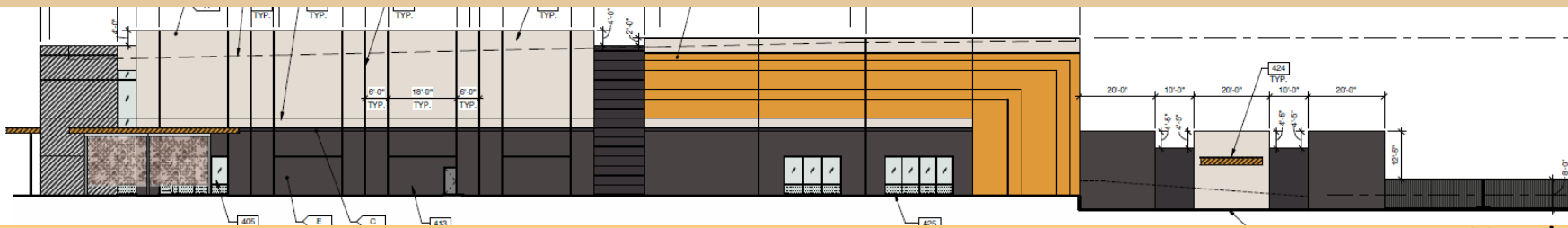
East



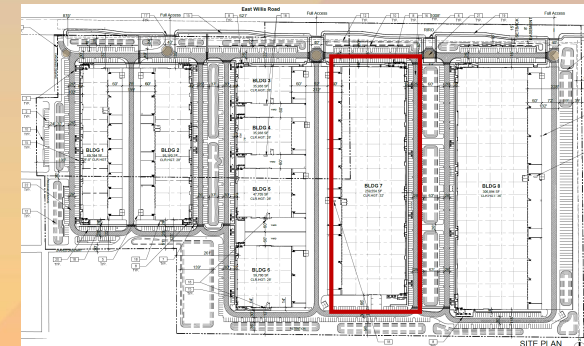
West



South



North



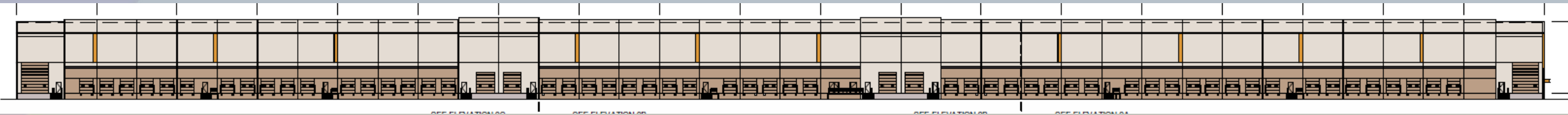




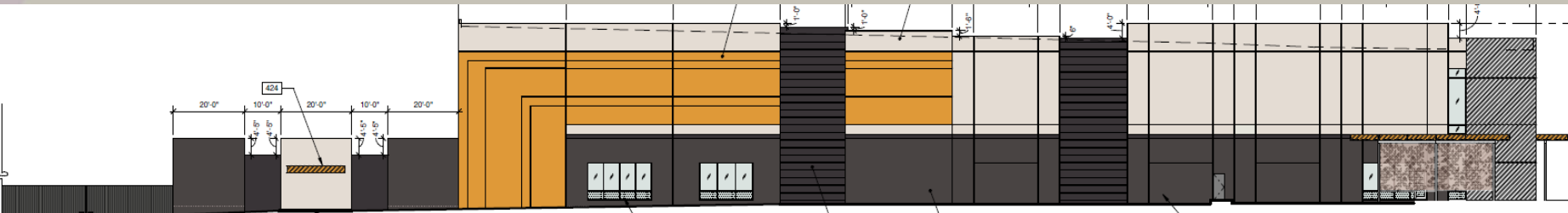
# Elevations – Building 8



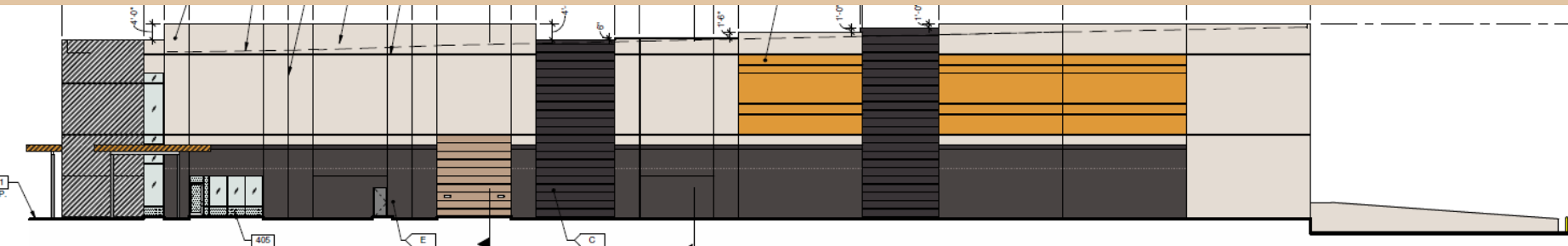
West



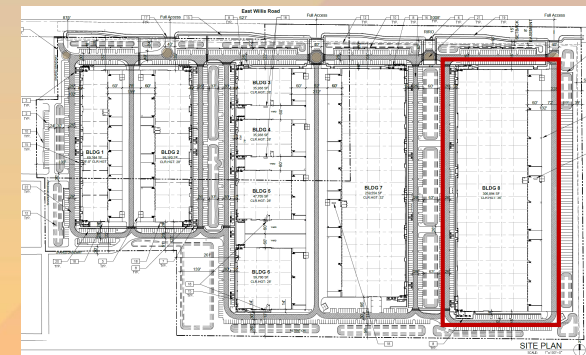
East



North



South







# Rendering







# Rendering







# Rendering







# Rendering

BUILDING 8

BUILDING 7

BUILDING 3

0 TREES SHOWN





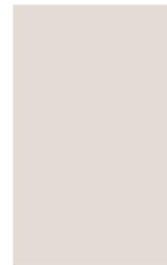
# Colors and Materials



1 VITRO OPTIBLUE GLASS, SOLARBAN Z75



2 ALUMINUM STOREFRONT:  
ARCADIA, BLACK AB-8



3 SHERWIN WILLIAMS:  
EVERYDAY WHITE -  
SW 6077



4 CLOPLAY -  
COMMERCIAL TAN



5 SHERWIN WILLIAMS:  
DEEP FOREST BROWN -  
SW 9175



6 SHERWIN WILLIAMS:  
GOLD CREST - SW 6670



7 METAL PANEL - KOVACH  
BRUSHED SILVER (ACM)



8 BRICK VENEER:  
PACIFIC GREY  
DESERT GRAY COLOR



PERSPECTIVE RENDER





# Alternative Compliance

- No more than 50% of the façade may be covered with one material
- Incorporate 3 different and distinct materials
- Parapet detailing



# Findings

Staff is seeking your review and recommendation on the following:

- ✓ Proposed building elevations & landscape design
- ✓ Alternative compliance requests

*Staff welcomes any feedback*





# Design Review Board