



Design Review Board



DRB22-01156 Higley 202



Request

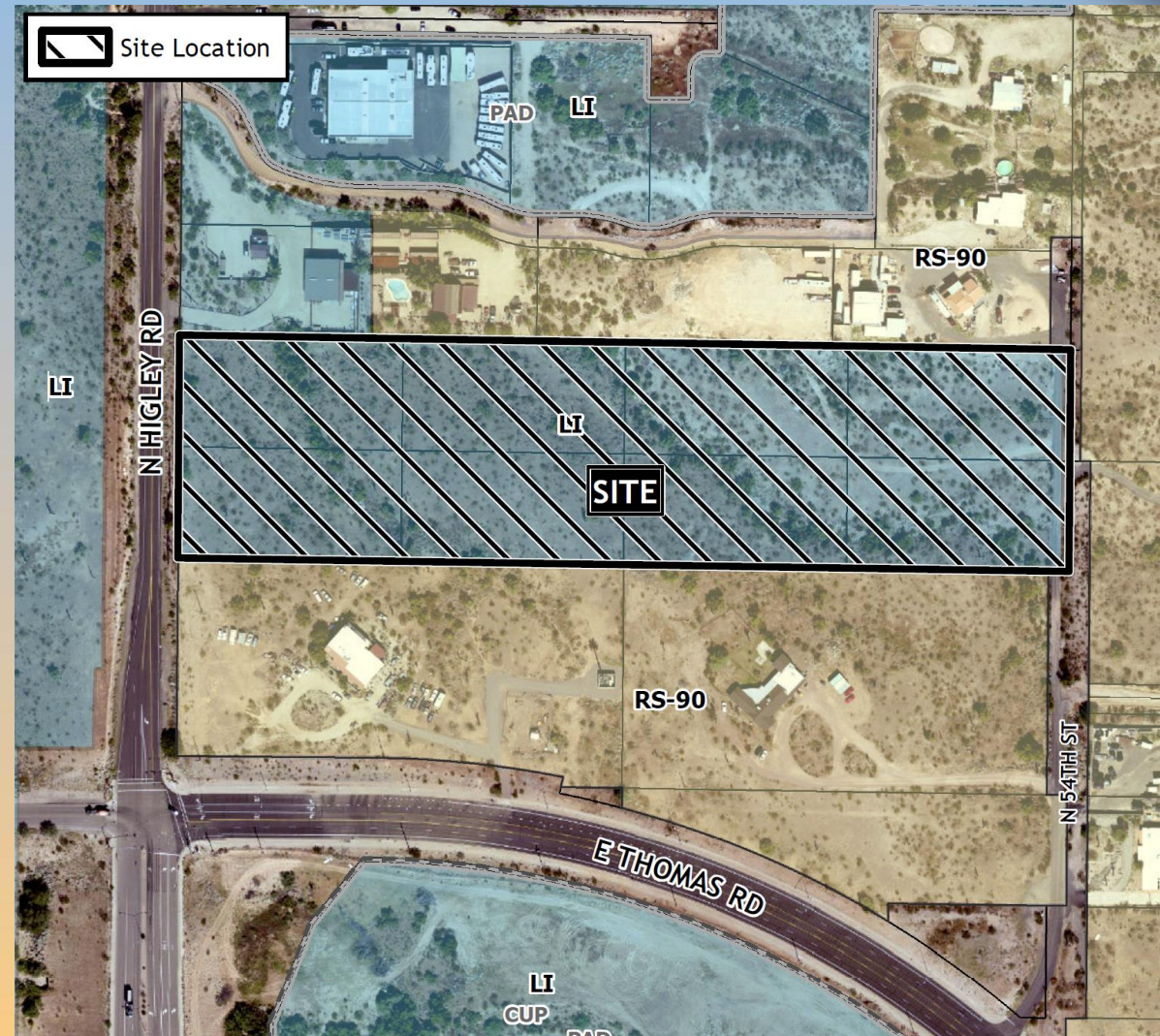
- Design Review
- To allow an Industrial Business Park





Location

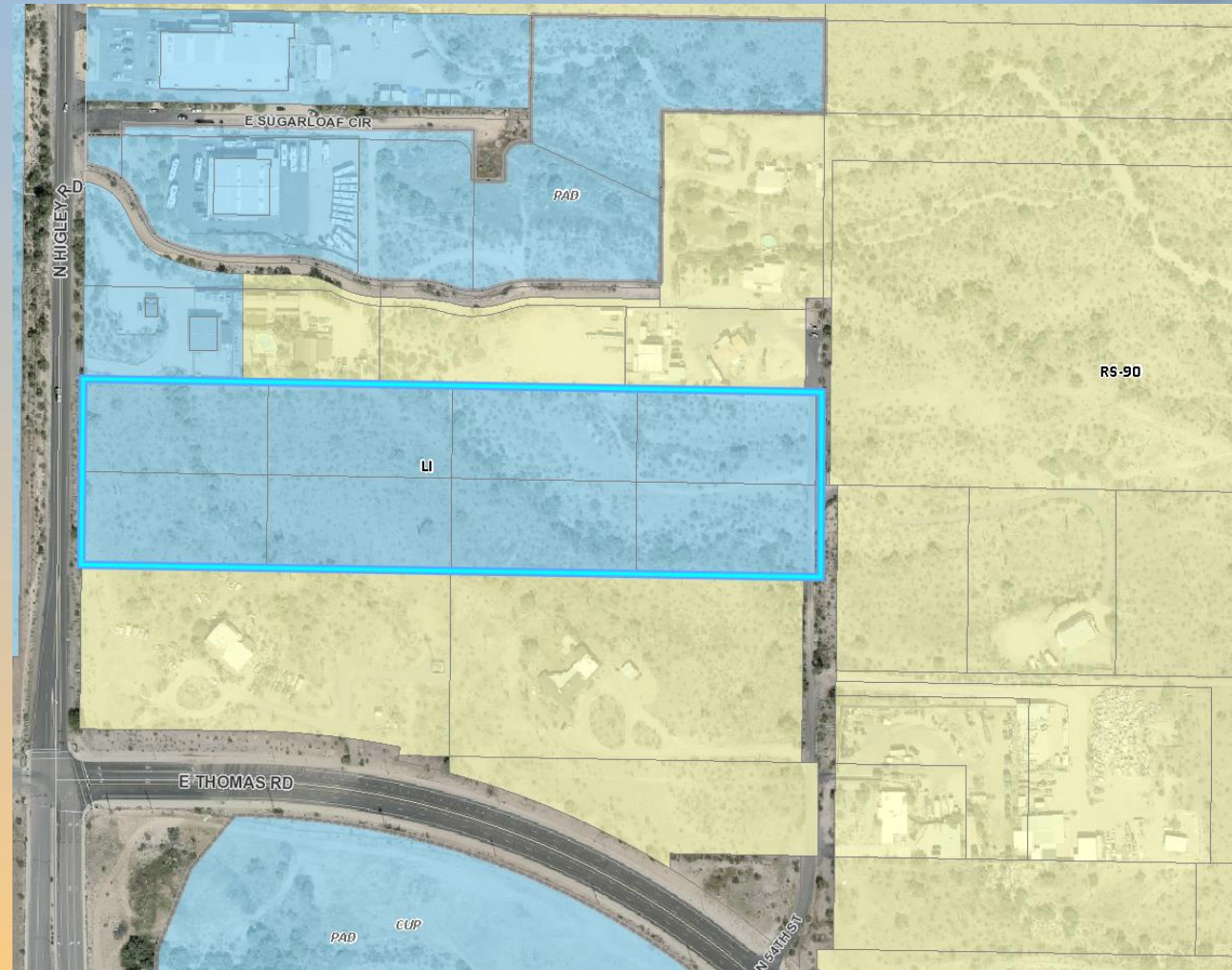
- North of Thomas Road
- East of Higley Road





Zoning

- Light Industrial (LI)
- Proposed Rezone to LI-PAD to allow for lots to front on a private drive





Site Photos

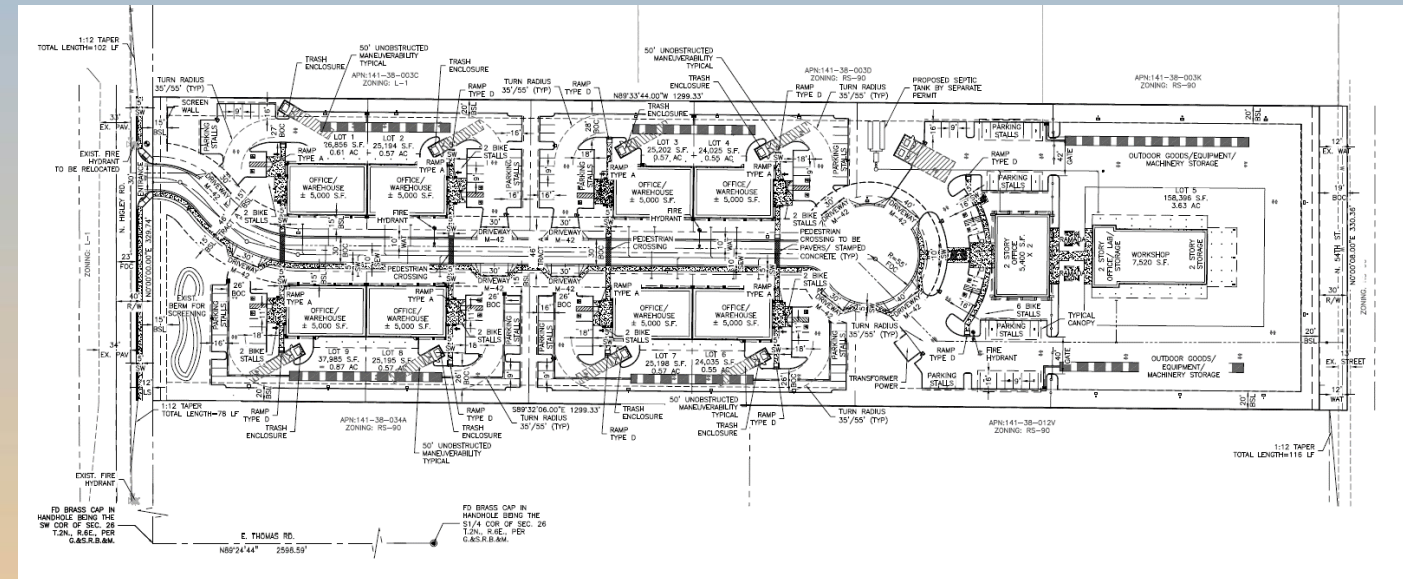


Looking east from Higley Road



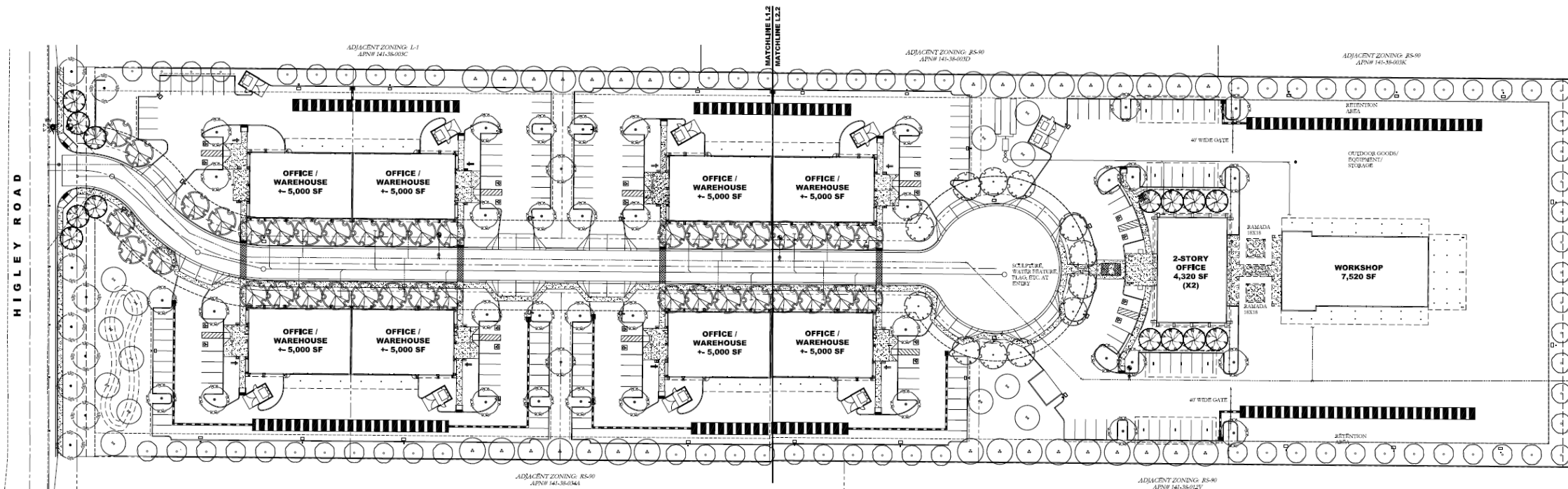
Site Plan

- 9 buildings of various sizes
- Majority of buildings are general industrial spec buildings
- Kinkaid Civil proposed user for 2 story office





Landscape Plan

[illegible]



Elevations



EAST SIDE ELEVATION



WEST SIDE ELEVATION



NORTH SIDE ELEVATIONS



SOUTH SIDE ELEVATIONS

FINISH COLOR



A SERIES
SHERWIN WILLIAMS
SW 1000
IBIS WHITE



B SERIES
SHERWIN WILLIAMS
SW 9143
CADET



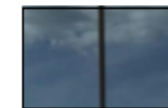
C SERIES
SHERWIN WILLIAMS
SW 6256
GRAYS HARBOR



D
SHEET METAL GLADD'S
FINISH: CHEMETAL CO.
#S14 MAYAN
www.chemetalco.com
OR EQUIVALENT



E
WINDOWS/ DOORS
FRAMES
DARK BRONZE
ANODIZED ALUMINUM



F
GLAZING,
REFLECTIVE
GRAY



G SERIES
HOLLOW METAL
FRAME AND DOORS
OVERHEAD DOORS
STEEL RAIL/CABLE
WALL SCONCE
SW 1048
URBANE BRONZE



Elevations



WEST ELEVATION BLDG: 1 & 3
 EAST ELEVATION BLDG: 6 & 8
 SCALE: 1/8" = 1'-0"



EAST ELEVATION BLDG: 2 & 4
 WEST ELEVATION BLDG: 7 & 9
 SCALE: 1/8" = 1'-0"

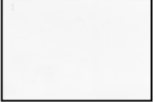
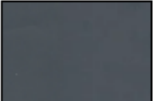
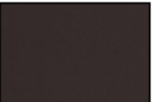



SOUTH ELEVATIONS BLDG: 1+2 & 3+4
 NORTH ELEVATIONS BLDG: 6+7 & 8+9
 SCALE: 1/8" = 1'-0"



NORTH ELEVATIONS BLDG: 1+2 & 3+4
 SOUTH ELEVATIONS BLDG: 6+7 & 8+9
 SCALE: 1/8" = 1'-0"

FINISH COLOR

	A SERIES SHERWIN WILLIAMS SW 1000 IBIS WHITE
	B SERIES SHERWIN WILLIAMS SW 9143 CADET
	C SERIES SHERWIN WILLIAMS SW 6256 GRAYS HARBOR
	D SHEET METAL CLADDING FINISH: CHEMETAL CO. #S14 MAYAN www.chemetalco.com OR EQUIVALENT
	E WINDOWS/ DOORS FRAMES DARK BRONZE ANODIZED ALUMINUM
	F GLAZING, REFLECTIVE GRAY
	G SERIES HOLLOW METAL FRAME AND DOORS OVERHEAD DOORS STEEL RAILING/CABLE WALL SCONCE SW 1048 URBANE BRONZE



Renderings





Renderings





Colors and Materials



E
WINDOWS/ DOORS
FRAMES
DARK BRONZE
ANODIZED ALUMINUM



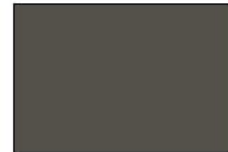
A SERIES
SHERWIN WILLIAMS
SW 7000
IBIS WHITE



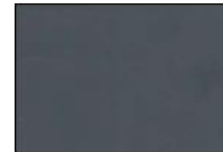
F
GLAZING:
REFLECTIVE
GRAY



B SERIES
SHERMAN WILLIAMS
SW 9143
CADET



G SERIES
HOLLOW METAL
FRAME AND DOORS
OVERHEAD DOORS
STEEL RAIL'G/CABLE
WALL SCONE
SW 7048
URBANE BRONZE



C SERIES
SHERMAN WILLIAMS
SW 6236
GRAYS HARBOR



D
SHEET METAL CLADD'G
FINISH: CHEMETAL CO.
#314 MAYAN
www.chemetalco.com
OR EQUIVALANT



Alternative Compliance

- ✓ Materials. Facades shall incorporate at least 3 different materials
- ✓ Materials. No more than 50% of the façade may be covered with one single material
- ✓ Parapet. All parapets must have detailing
- ✓ Height. Vary building height, providing at least 2 changes



Findings

Staff is seeking your review and recommendation on the following:

- ✓ Proposed building elevations
- ✓ Alternative Compliance for Building Materials

Staff welcomes any feedback



Design Review Board