



Design Review Board



DRB22-01053

Gravity Energy Drinks



Request

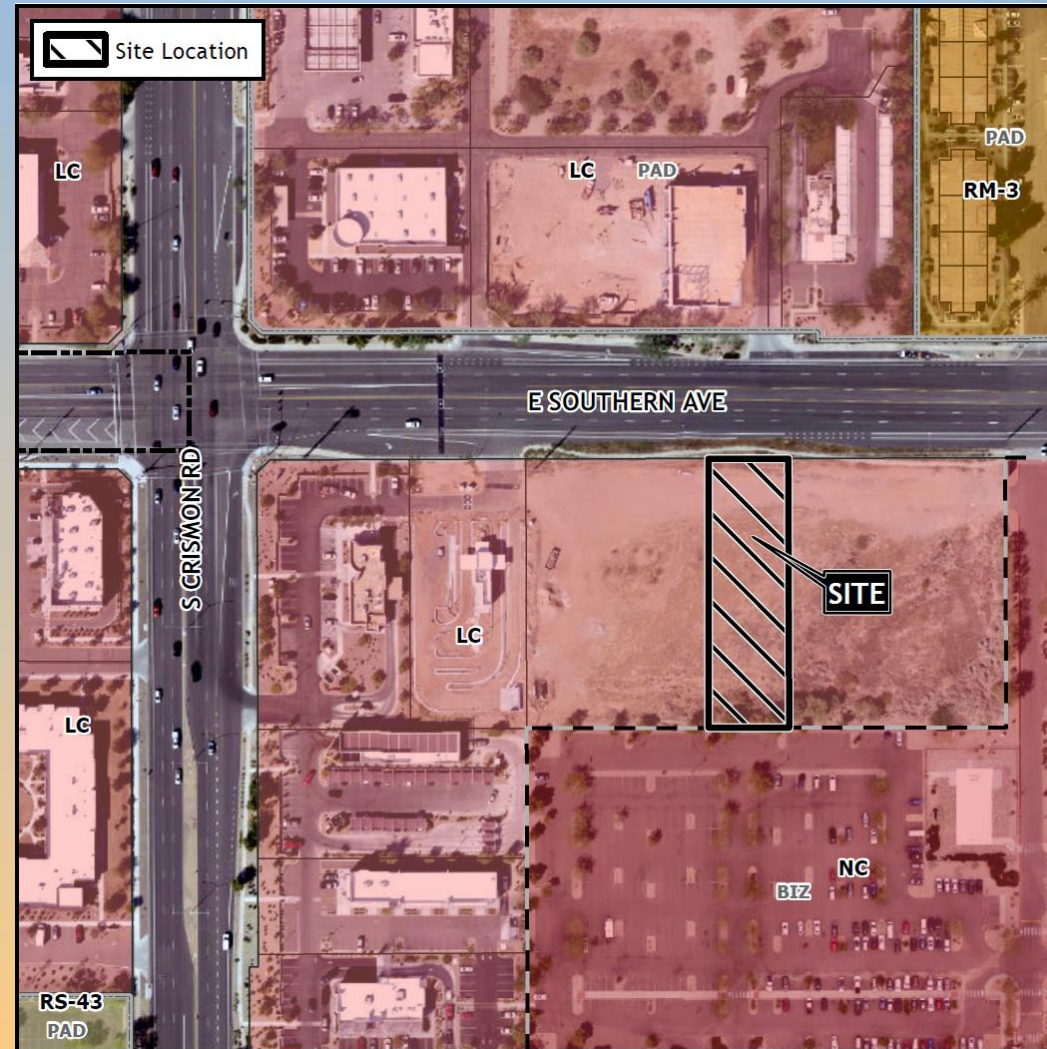
- Design Review
- To allow a restaurant with a drive thru





Location

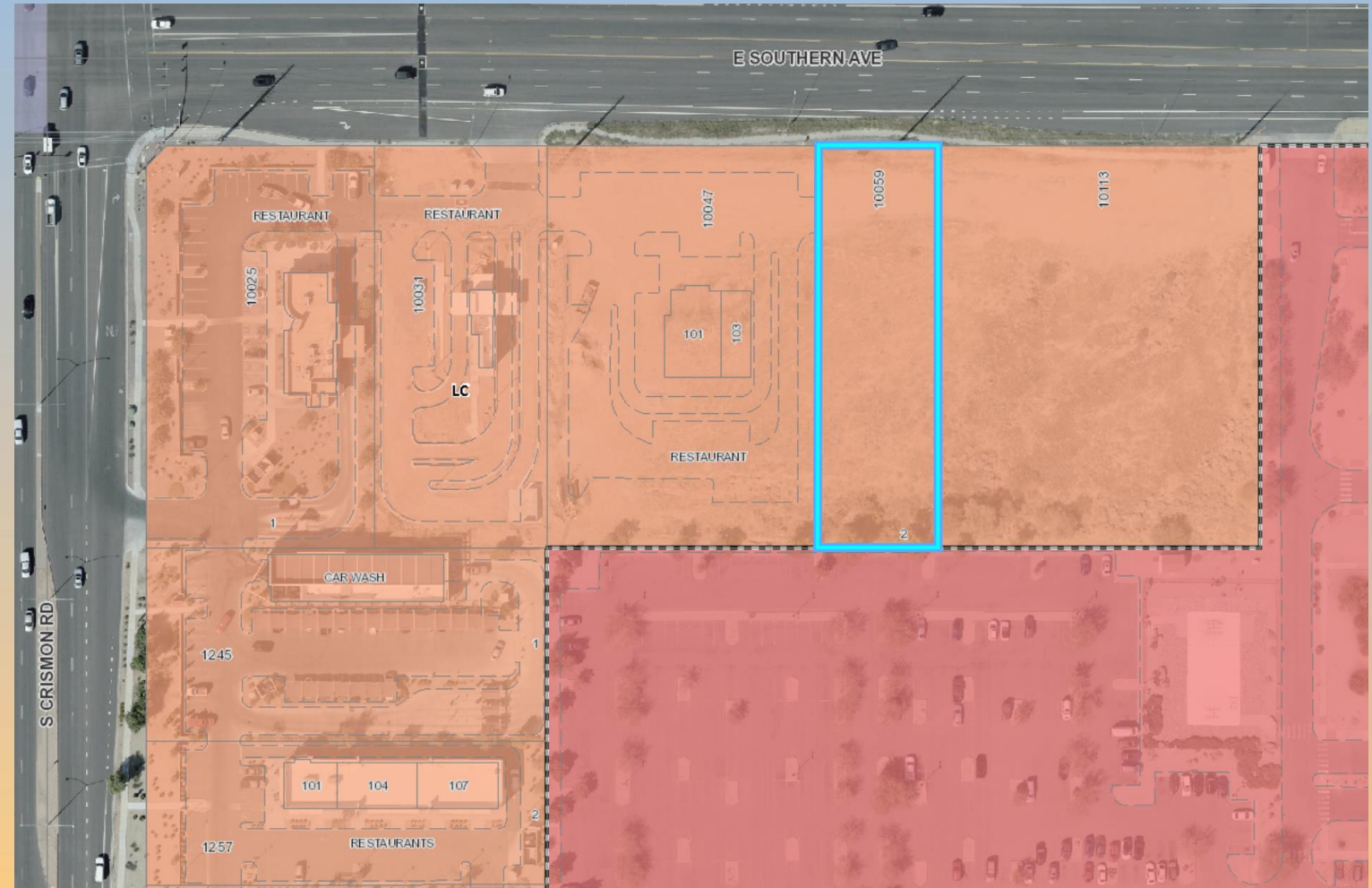
- South of Southern Avenue
- East of Crismon Road





Zoning

- Limited Commercial
 - A drive thru use is allowed





Site Photos

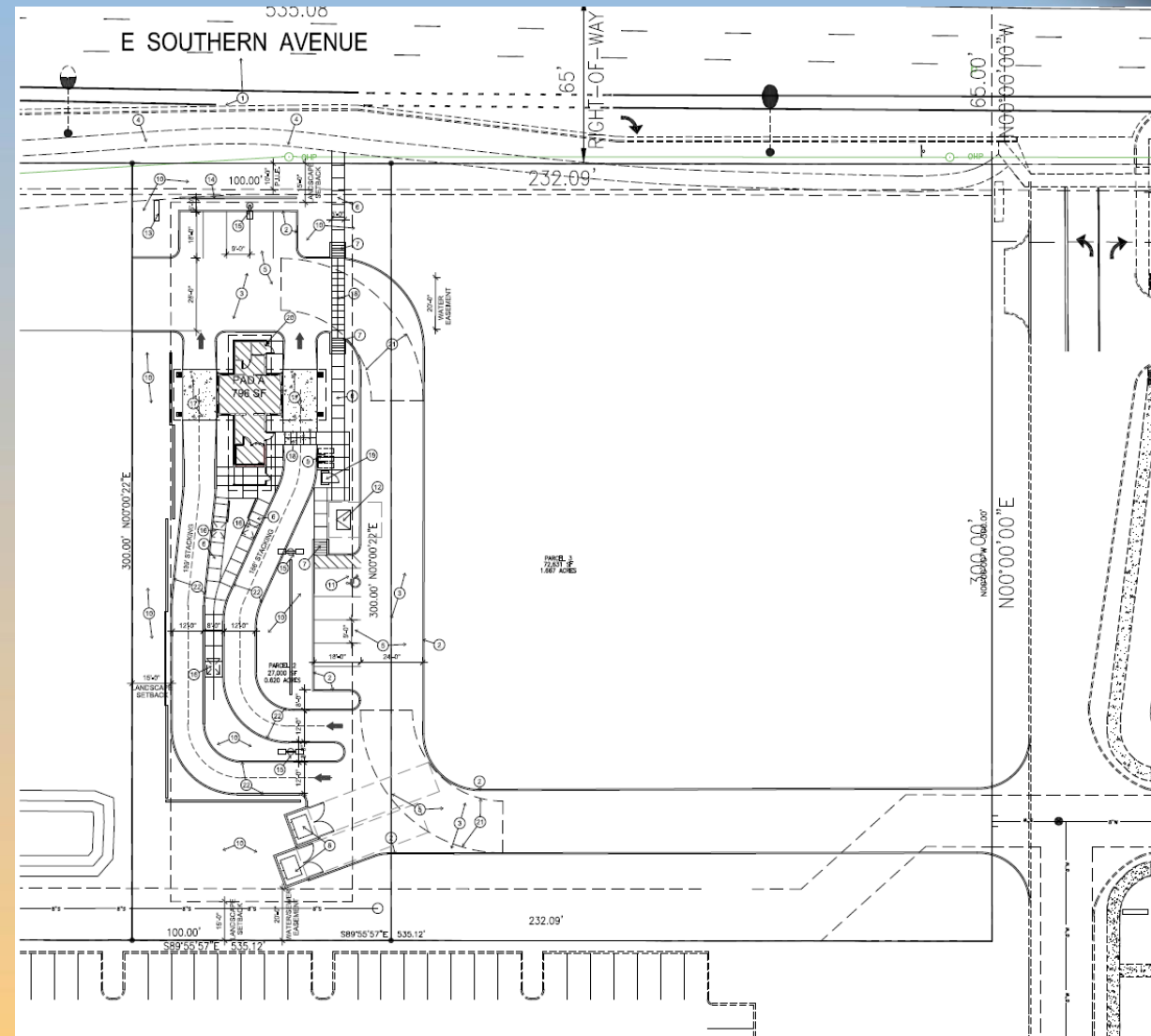


Looking south from Southern Avenue



Site Plan

- 796 sq. ft. building
- Drive thru only facility
- Drive thru lanes on both sides of the building

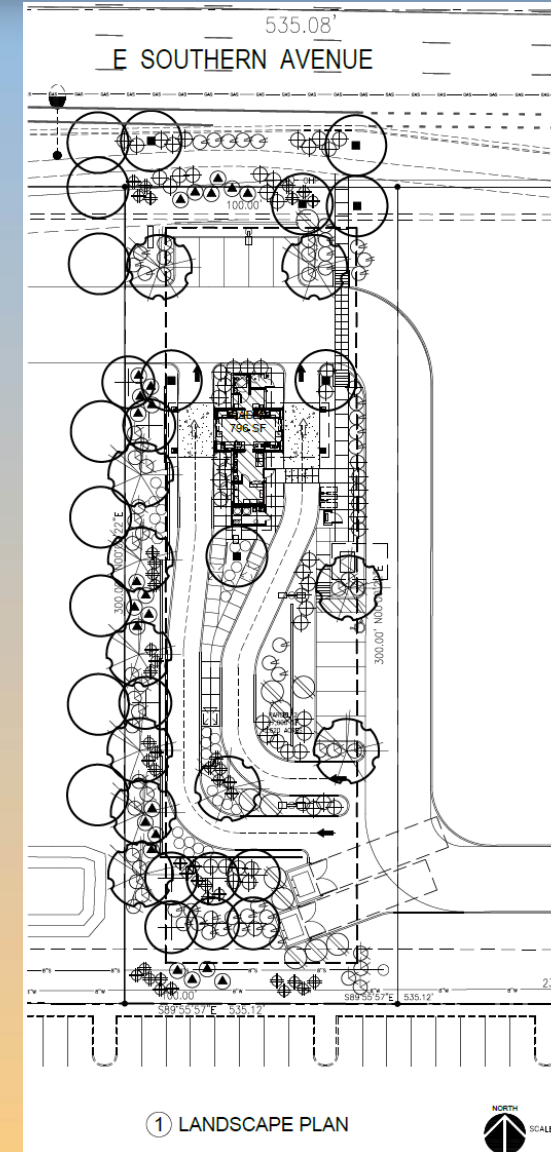




Landscape Plan

Includes

- Chinese Elm
- Mulga
- Mexican Bird of Paradise
- And smaller shrubs



LANDSCAPE LEGEND	
TREES	GROUND COVER
<i>Ulmus parvifolia</i> Chinese elm 24" Box	<i>Lantana montevidensis</i> Gold Mound' 1 Gallon
<i>Acacia Aneura</i> Mulga 36" Box	D.G. 1/2" Screened Express Painted Desert 2" min thickness in all landscape areas
<i>Caesalpinia Mexicana</i> mexican bird of paradise 24" Box	
Existing Tree Protect from Construction	
SHRUBS	
<i>Dasylirion wheeleri</i> Desert spoon 5 Gallon	<i>Tecoma stans</i> Yellow Bells 5 Gallon
<i>Hesperaloe Funifera</i> Giant Hesperaloe 5 Gallon	<i>Hesperaloe perpa</i> Break Light Red Yucca 5 Gallon
<i>Nerium Oleander</i> Petite pink 5 Gallon	
<i>Eremophila Glabra</i> Mingenew Gold 5 Gallon	



Elevations



NORTH ELEVATION

FACADE MATERIALS	SQUARE FOOTAGE	% AREA
WOOD LOOK SIDING	310 SF	43.42%
STONE	90 SF	12.60%
GLASS/WINDOWS:	36 SF	5.05%
STANDING SEAM METAL ROOFING:	278 SF	38.93%
TOTAL FACADE	714 SF	100%

SOUTH ELEVATION

FACADE MATERIALS	SQUARE FOOTAGE	% AREA
WOOD LOOK SIDING	310 SF	43.42%
STONE	90 SF	12.60%
GLASS/WINDOWS:	36 SF	5.05%
STANDING SEAM METAL ROOFING:	278 SF	38.93%
TOTAL FACADE	714 SF	100%

WEST ELEVATION

FACADE MATERIALS	SQUARE FOOTAGE	% AREA
WOOD LOOK SIDING	219 SF	31.03%
STONE	221 SF	31.30%
GLASS/WINDOWS/DOORS:	73 SF	10.34%
STANDING SEAM METAL ROOFING:	193 SF	27.33%
TOTAL FACADE	706 SF	100%

EAST ELEVATION

FACADE MATERIALS	SQUARE FOOTAGE	% AREA
WOOD LOOK SIDING	201 SF	28.45%
STONE	210 SF	29.73%
GLASS/WINDOWS/DOORS:	103 SF	14.57%
STANDING SEAM METAL ROOFING:	193 SF	27.32%
TOTAL FACADE	706 SF	100%



Renderings





Renderings





Renderings





Colors and Materials



MANU: ATAS (OR EQUAL)
TYPE: OPALINE/OPF SMOOTH PANEL
6" COVERAGE
COLOR: WOODLAND SERIES CEDAR

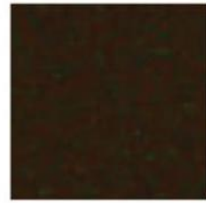


MANU: EL DORADO STONE
TYPE: STACKED STONE
COLOR: SILVER LINING

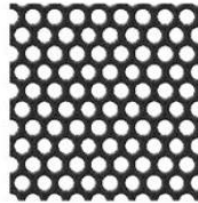


STANDING SEAM METAL ROOFING
PAC-CLAD, SNAP-CLAD,
16" COVERAGE OR EQUAL
BLACK FINISH

PROVIDE 2 COATS MAPEI "ULTRACARE"
ENHANCING SEALANT



ANODIZED ALUMINUM FINISH
DARK BRONZE



MCNICHOLS PERFORATED METAL
ROUND, CARBON STEEL, COLD ROLLED,
16 GAGUE (.0598" THICK),
1/4" ROUND ON 1/2" STAGGERED CENTERS,
23% OPEN AREA



SHERWIN WILLIAMS
SW 6258 TRICORN BLACK



SOLARBAN 70XL
SHGC: 0.27, U-VALUE: 0.24, VLT 64%



MANU: EL DORADO STONE
TYPE: STACKED STONE
CAP: SNAPPED EDGE WAINSCOT CAP
COLOR: PEWTER



Findings

Staff is seeking your review and recommendation on the following:

- ✓ Proposed Building Elevations
- ✓ Landscape Plan

Staff welcomes any feedback



Design Review Board