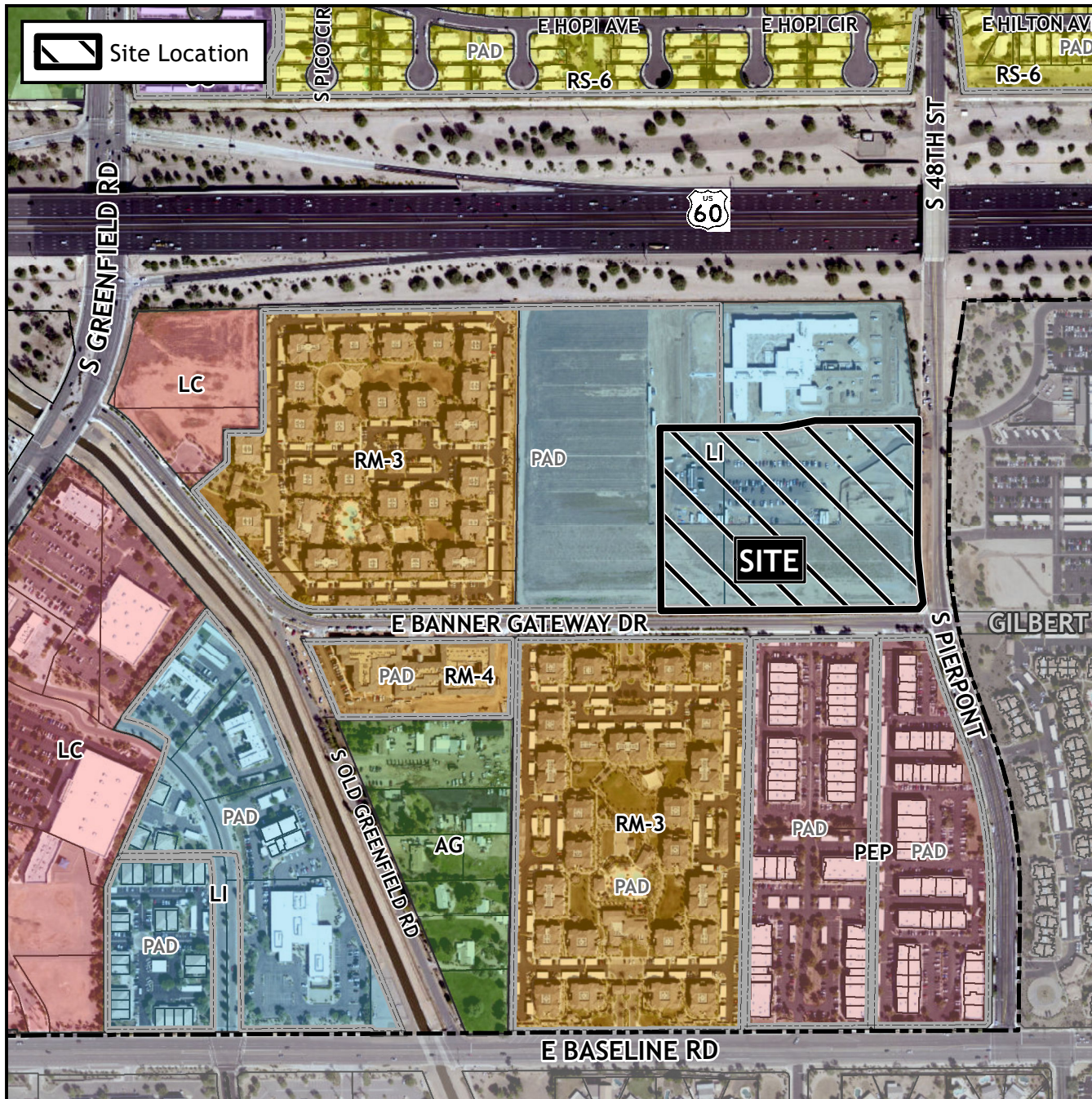


Planning and Zoning Vicinity Map: ZON22-01263



Case Details

CASE:

ZON22-01263

PRE-PLAT : ☐

SITE / ADDRESS:

(District 2). Within the 4600 block of East Banner Gateway Drive (north side) and within the 1700 block of South Pierpont Drive (west side). Located east of Greenfield Road and south of the US 60 Superstition Freeway. (13 ± acres).

REQUEST:

Rezone from Light Industrial (LI) and Light Industrial with a Planned Area Development overlay (LI-PAD) to Light Industrial with a Planned Area Development overlay (LI-PAD) and Site Plan Review. This request is associated with Banner Gateway Medical Center to provide housing accommodations for patients and their families during treatment and while in recovery.

