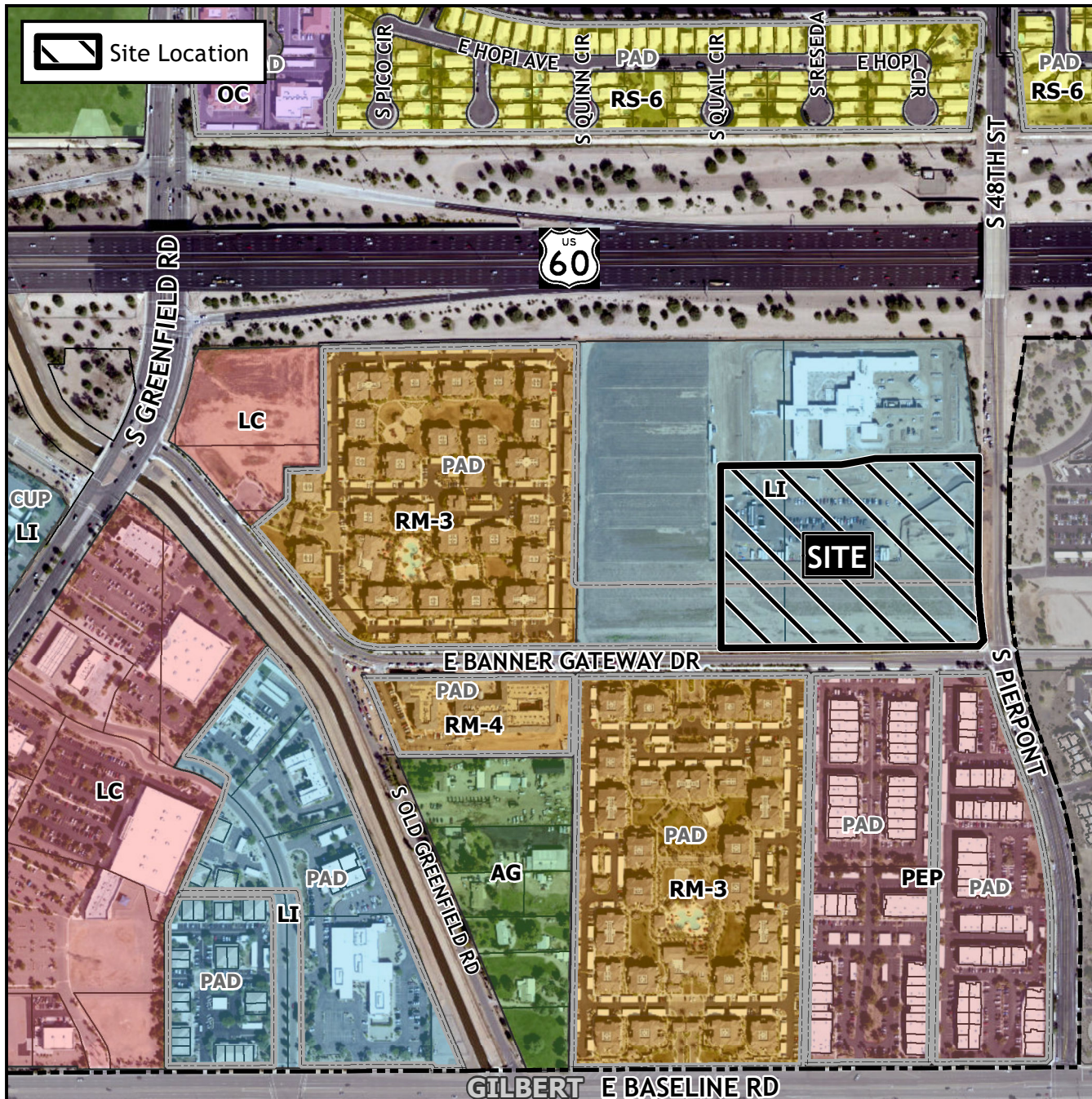


Design Review Vicinity Map: DRB23-00013



Case Details

Case:

DRB23-00013

Site / Address:

(District 2). Within the 4600 block of East Banner Gateway Drive (north side) and within the 1700 block of South Pierpont Drive (west side). Located east of Greenfield Road and south of the US 60 Superstition Freeway. (13 ± acres).

Request:

Design Review for a temporary housing development associated with Banner Gateway Medical Center

