

## ELEVATION NOTES

1. ROOF DRAINAGE IS SHEET FLOW OFF OF ROOF WITH NO GUTTERS OR DOWNSPOUTS
2. MECHANICAL EQUIPMENT IS SCREENED IN MECHANICAL YARD WITH PERFORATED METAL.
3. SIGNAGE IS UNDER SEPARATE REVIEW AND PERMIT.
4. THERE ARE NO WALL MOUNTED LIGHT FIXTURES. ALL LIGHTING WILL BE MOUNTED IN THE SOFFITS.

## MATERIAL SPECIFICATIONS

WOOD LOOK SIDING [WS]	MANUFACTURER TYPE	ATAS (OR EQUAL) OPALINE / OPF SMOOTH PANEL 6" COVERAGE WOODLAND SERIES CEDAR
	COLOR	
STONE VENEER: [SV]	MANUFACTURER TYPE COLOR	EL DORADO STONE STACKED STONE SILVER LINING
	PROVIDE 2 COATS MAPEI "ULTRACARE" ENHANCING SEALANT	
	INSTALL PER ICC-ES EVALUATION REPORT ESR-1215	
STONE WAINSCOT: [SW]	MANUFACTURER TYPE CAP COLOR	EL DORADO STONE STACKED STONE SNAPPED EDGE WAINSCOT CAP PEWTER
	PROVIDE 2 COATS MAPEI "ULTRACARE" ENHANCING SEALANT	
ROOFING: [MT]	STANDING SEAM METAL ROOFING MANUFACTURER: ATAS TYPE: 1 1/2" FIELD-LOK OR EQUAL COLOR: BLACK FINISH	
ALUMINUM STOREFRONT: [AL]	DARK BRONZE ANODIZED ALUMINUM FINISH	
GLAZING:	SOLARBAN 70XL SHGC: 0.27, U-VALUE: 0.24, VLT 64%	



### NORTH ELEVATION

FAÇADE MATERIALS	SQUARE FOOTAGE	% AREA
WOOD LOOK SIDING	310 SF	43.42%
STONE	90 SF	12.60%
GLASS/WINDOWS:	36 SF	5.05%
STANDING SEAM METAL ROOFING:	278 SF	38.93%
TOTAL FAÇADE	714 SF	100%

### SOUTH ELEVATION

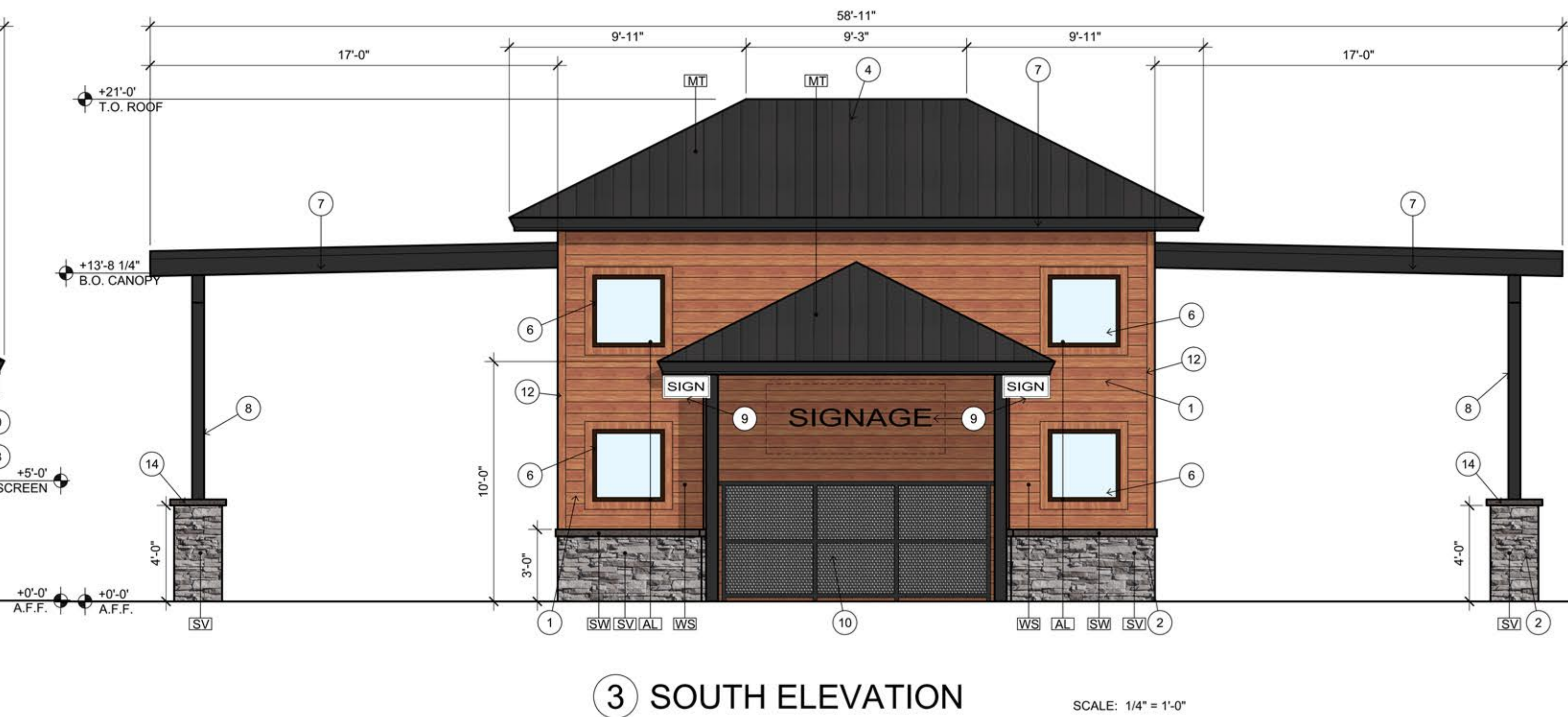
FAÇADE MATERIALS	SQUARE FOOTAGE	% AREA
WOOD LOOK SIDING	310 SF	43.42%
STONE	90 SF	12.60%
GLASS/WINDOWS:	36 SF	5.05%
STANDING SEAM METAL ROOFING:	278 SF	38.93%
TOTAL FAÇADE	714 SF	100%

### WEST ELEVATION

FAÇADE MATERIALS	SQUARE FOOTAGE	% AREA
WOOD LOOK SIDING	219 SF	31.03%
STONE	221 SF	31.30%
GLASS/WINDOWS/DOORS:	73 SF	10.34%
STANDING SEAM METAL ROOFING:	193 SF	27.33%
TOTAL FAÇADE	706 SF	100%

### EAST ELEVATION

FAÇADE MATERIALS	SQUARE FOOTAGE	% AREA
WOOD LOOK SIDING	201 SF	28.45%
STONE	210 SF	29.73%
GLASS/WINDOWS/DOORS:	103 SF	14.57%
STANDING SEAM METAL ROOFING:	193 SF	27.32%
TOTAL FAÇADE	706 SF	100%



## KEYNOTES

- 1 WOOD LOOK METAL SIDING
- 2 STONE VENEER
- 3 STONE WAINSCOT CAP (SNAPPED EDGE) "PEWTER"
- 4 STANDING SEAM BLACK METAL ROOFING
- 5 ALUMINUM SLIDING GLASS WINDOW WITH INSULATED GLAZING
- 6 ALUMINUM STOREFRONT WINDOW WITH INSULATED GLAZING
- 7 FASCIA BOARD COVERED WITH BLACK METAL TO MATCH ROOFING
- 8 STEEL COLUMN. PAINTED SW6258 "TRICORN BLACK"
- 9 SIGNAGE LOCATION(UNDER SEPARATE PERMIT)
- 10 METAL TUBE FENCING WITH 2 LAYERS OF PERFORATED METAL PANEL
- 11 INSERTS OFFSET TO SCREEN MECHANICAL UNITS. PAINTED SW6258 "TRICORN BLACK".
- 12 HOLLOW METAL DOOR AND FRAME. PAINTED SW6258 "TRICORN BLACK"
- 13 ALUMINUM CORNER TRIM. ANODIZED BLACK
- 14 BEAM (SEE STRUCTURAL) WRAPPED WITH BLACK METAL TO MATCH ROOFING
- 15 PRECAST CONCRETE CAP



ARCHICON

Architecture & Interiors, L.C.

5055 E WASHINGTON STREET

SUITE 200

PHOENIX, ARIZONA 85034

(602) 222-4266

FAX (602) 279-4305

www.ARCHICON.COM

GRAVITY ENERGY DRINKS  
10059 E SOUTHERN AVE  
MESA, ARIZONA 85209



PROJECT NUMBER: 2284400-02  
PROJECT MANAGER: JEFF K  
DRAWN BY: JEFF K  
CHECKED BY: JEFF K

NO	REVISION	DATE

SHEET DESCRIPTION  
EXTERIOR ELEVATIONS



SHEET NO.

DR300

ISSUE DATE: 26 JAN 2023

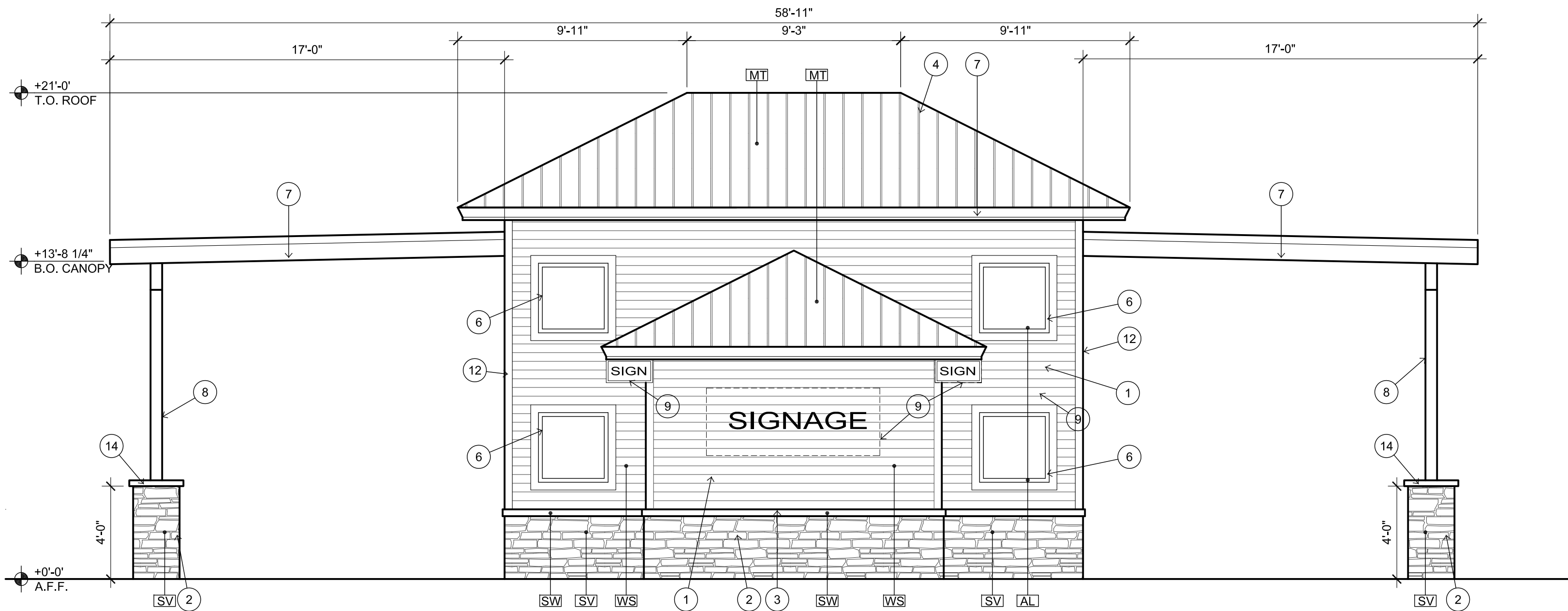


### ELEVATION NOTES

- ROOF DRAINAGE IS SHEET FLOW OFF OF ROOF WITH NO GUTTERS OR DOWNSPOUTS
- MECHANICAL EQUIPMENT IS SCREENED IN MECHANICAL YARD WITH PERFORATED METAL.
- SIGNAGE IS UNDER SEPARATE REVIEW AND PERMIT.
- THERE ARE NO WALL MOUNTED LIGHT FIXTURES. ALL LIGHTING WILL BE MOUNTED IN THE SOFFITS.

### MATERIAL SPECIFICATIONS

WOOD LOOK SIDING WS	MANUFACTURER TYPE	ATAS (OR EQUAL) OPALINE / OPF SMOOTH PANEL 6" COVERAGE WOODLAND SERIES CEDAR
	COLOR	
STONE VENEER: SV	MANUFACTURER TYPE COLOR	EL DORADO STONE STACKED STONE SILVER LINING
	PROVIDE 2 COATS MAPEI "ULTRACARE" ENHANCING SEALANT	
	INSTALL PER ICC-ES EVALUATION REPORT ESR-1215	
STONE WAINSCOT: SW	MANUFACTURER TYPE CAP COLOR	EL DORADO STONE STACKED STONE SNAPPED EDGE WAINSCOT CAP PEWTER
	PROVIDE 2 COATS MAPEI "ULTRACARE" ENHANCING SEALANT	
ROOFING: MT	STANDING SEAM METAL ROOFING MANUFACTURER: ATAS TYPE: 1 1/2" FIELD-LOK OR EQUAL COLOR: BLACK FINISH	
ALUMINUM STOREFRONT: AL	DARK BRONZE ANODIZED ALUMINUM FINISH	
GLAZING:	SOLARBAN 70XL SHGC: 0.27, U-VALUE: 0.24, VLT 64%	



1 NORTH ELEVATION

SCALE: 1/4" = 1'-0"



2 WEST ELEVATION

SCALE: 1/4" = 1'-0"



3 SOUTH ELEVATION

SCALE: 1/4" = 1'-0"

#### NORTH ELEVATION

FAÇADE MATERIALS	SQUARE FOOTAGE	% AREA
WOOD LOOK SIDING	310 SF	43.42%
STONE	90 SF	12.60%
GLASS/WINDOWS:	36 SF	5.05%
STANDING SEAM METAL ROOFING:	278 SF	38.93%
TOTAL FAÇADE	714 SF	100%

#### SOUTH ELEVATION

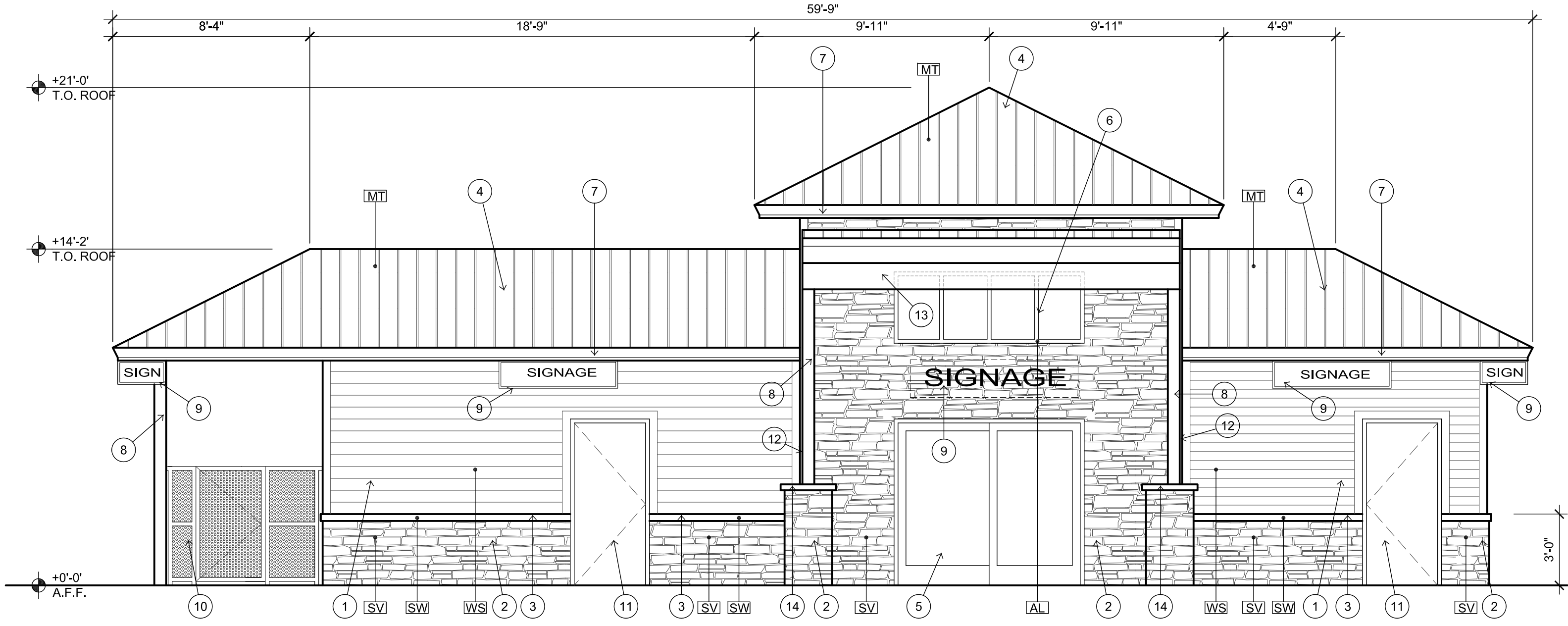
FAÇADE MATERIALS	SQUARE FOOTAGE	% AREA
WOOD LOOK SIDING	310 SF	43.42%
STONE	90 SF	12.60%
GLASS/WINDOWS:	36 SF	5.05%
STANDING SEAM METAL ROOFING:	278 SF	38.93%
TOTAL FAÇADE	714 SF	100%

#### WEST ELEVATION

FAÇADE MATERIALS	SQUARE FOOTAGE	% AREA
WOOD LOOK SIDING	219 SF	31.03%
STONE	221 SF	31.30%
GLASS/WINDOWS/DOORS:	73 SF	10.34%
STANDING SEAM METAL ROOFING:	193 SF	27.33%
TOTAL FAÇADE	706 SF	100%

#### EAST ELEVATION

FAÇADE MATERIALS	SQUARE FOOTAGE	% AREA
WOOD LOOK SIDING	201 SF	28.45%
STONE	210 SF	29.73%
GLASS/WINDOWS/DOORS:	103 SF	14.57%
STANDING SEAM METAL ROOFING:	193 SF	27.32%
TOTAL FAÇADE	706 SF	100%

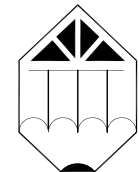


4 EAST ELEVATION

SCALE: 1/4" = 1'-0"

### KEYNOTES

- WOOD LOOK METAL SIDING
- STONE VENEER
- STONE WAINSCOT CAP (SNAPPED EDGE) "PEWTER"
- STANDING SEAM BLACK METAL ROOFING
- ALUMINUM SLIDING GLASS WINDOW WITH INSULATED GLAZING
- ALUMINUM STOREFRONT WINDOW WITH INSULATED GLAZING
- FASCIA BOARD COVERED WITH BLACK METAL TO MATCH ROOFING
- STEEL COLUMN. PAINTED SW6258 "TRICORN BLACK"
- SIGNAGE LOCATION(UNDER SEPARATE PERMIT)
- METAL TUBE FENCING WITH 2 LAYERS OF PERFORATED METAL PANEL  
INSERTS OFFSET TO SCREEN MECHANICAL UNITS. PAINTED SW6258 "TRICORN BLACK".
- HOLLOW METAL DOOR AND FRAME. PAINTED SW6258 "TRICORN BLACK"
- ALUMINUM CORNER TRIM. ANODIZED BLACK
- BEAM (SEE STRUCTURAL) WRAPPED WITH BLACK METAL TO MATCH ROOFING
- PRECAST CONCRETE CAP

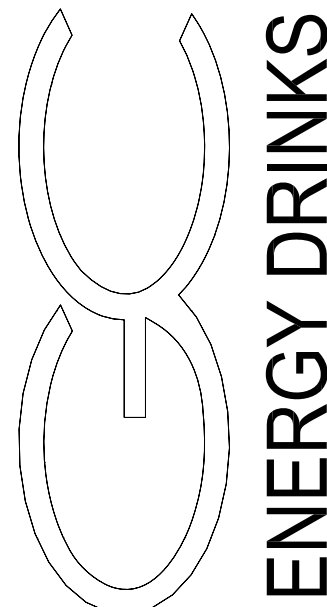


ARCHICON

Architecture & Interiors, L.C.

5055 E WASHINGTON STREET  
SUITE 200  
PHOENIX, ARIZONA 85034  
(602) 222-4266  
FAX (602) 279-4305  
www.ARCHICON.COM

GRAVITY ENERGY DRINKS  
10059 E SOUTHERN AVE  
MESA, ARIZONA 85209



PROJECT NUMBER: 2284400-02  
PROJECT MANAGER: JEFF K  
DRAWN BY: JEFF K  
CHECKED BY: JEFF K

NO	REVISION	DATE

SHEET DESCRIPTION  
EXTERIOR ELEVATIONS



SHEET NO.

DR300

ISSUE DATE: 26 JAN 2023





# GRAVITY ENERGY DRINKS

EXTERIOR RENDERING  
MESA, AZ



5055 E. Washington St., Ste 200  
Phoenix, Arizona 85034  
Phone: (602) 222-4266  
www.archicon.com

**ARCHICON**  
ARCHITECTURE & INTERIORS, L.C.

OWNERSHIP OF DESIGN, INSTRUMENTS OF SERVICE  
All plans, designs notes and reports shown on this drawing  
are the property of Archicon Architecture and Interiors, L.C.  
Any use or reproduction of this design concept or drawing(s)  
without compensation and the expressed written permission  
of Archicon Architecture and Interiors, L.C. is prohibited shall  
retain all common law, statutory and reserved rights.

DATE ISSUED: 01.24.2023





# GRAVITY ENERGY DRINKS

EXTERIOR RENDERING  
MESA, AZ





# GRAVITY ENERGY DRINKS

EXTERIOR RENDERING  
MESA, AZ





# GRAVITY ENERGY DRINKS

EXTERIOR RENDERING  
MESA, AZ



5055 E. Washington St., Ste 200  
Phoenix, Arizona 85034  
Phone: (602) 222-4266  
www.archicon.com

**ARCHICON**  
ARCHITECTURE & INTERIORS, L.C.

OWNERSHIP OF DESIGN, INSTRUMENTS OF SERVICE  
All plans, designs notes and reports shown on this drawing  
are the property of Archicon Architecture and Interiors, L.C.  
Any use or reproduction of this design concept or drawing(s)  
without compensation and the expressed written permission  
of Archicon Architecture and Interiors, L.C. is prohibited shall  
retain all common law, statutory and reserved rights.

DATE ISSUED: 01.24.2023