



CITY OF MESA 2050 TRANSPORTATION MASTER PLAN

March 9, 2023

Erik Guderian - Deputy Transportation Director
Sabine King - Supervising Engineer



What is a Transportation Master Plan (TMP)?



Examines
conditions of
ALL modes



Evaluates needs
and programs to
address concerns
of today and
tomorrow



Guides
transportation
decisions for the
next 25 years

What is a Transportation Master Plan (TMP)?

Builds on What We Know...



... to **GUIDE** Transportation Decisions

Current Transportation Guiding Document



2040 Mesa TMP...

- Adopted Nov 2014
- Developed internally
- Identified needs for roadway, transit, pedestrian, bicycle, aviation, and Intelligent Transportation Systems (ITS)
- Included a Complete Streets element

Why Update Now?



Mesa has Changed.. A LOT!

Since 2012:
16% increase in population



Mesa is Rapidly Growing

By 2050:
22% increase in population;
120K new employees



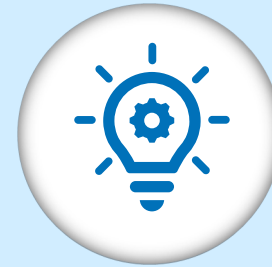
Transportation has Changed

Travel patterns continue to evolve;
Increased demand on system



Mesa Bond Program

\$100M - 2020
Mesa Moves Bond Program approved by voters



Emerging Technologies

Newer and emerging technologies will continue to change the way we drive



New Information

Studies Being Updated:
General Plan,
Transit Plan,
Housing Plan,
etc.

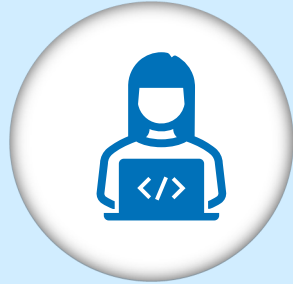
How is the 2050 TMP Different?



Integrates ALL Modes

2040 TMP:

Looked at each mode separately, then together



Data-Driven, Community Informed

2040 TMP:

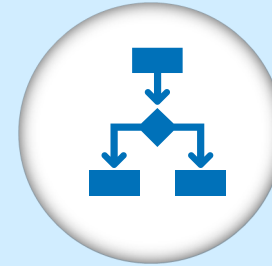
Older data, southeast Mesa unknown, limited outreach



Evaluates How We Use Our Streets

2040 TMP:

Focused on complete streets, not the functional need of a street



New Decision Making Framework

2040 TMP:

Minimal improvement recommendations and strategies to pursue



Creates Cohesive City Vision

2040 TMP:

Standalone effort – did not integrate General Plan, Transit Plan, etc.

Study Network

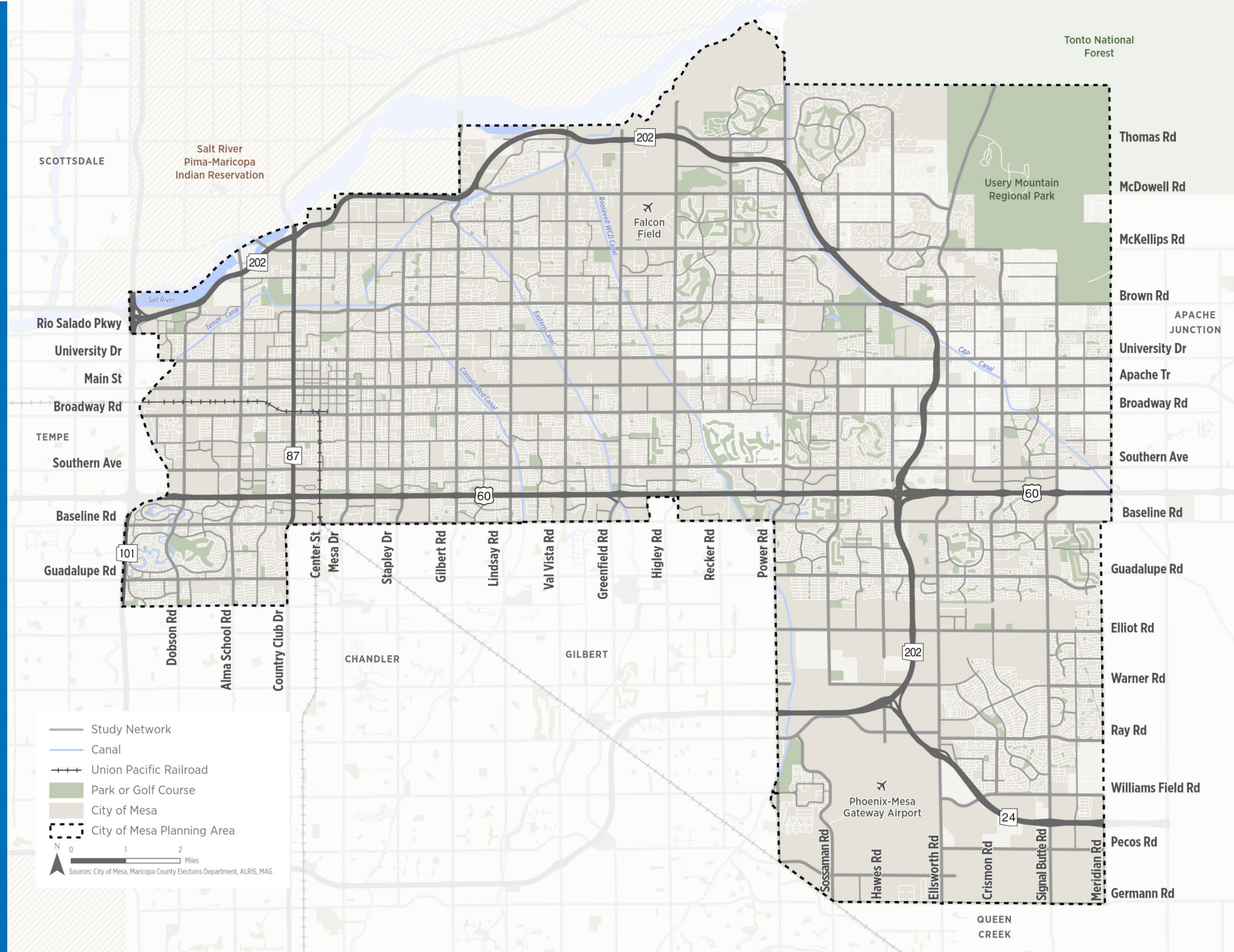
Existing Network



Collectors and arterials



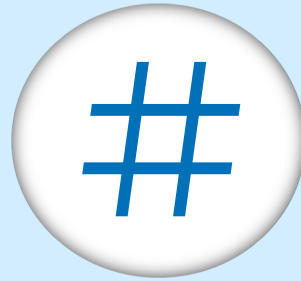
Key local streets added for connectivity



Key Deliverables/Outcomes?



**Evaluation and
Prioritization of
Multimodal
Needs –
Corridors &
Subareas**

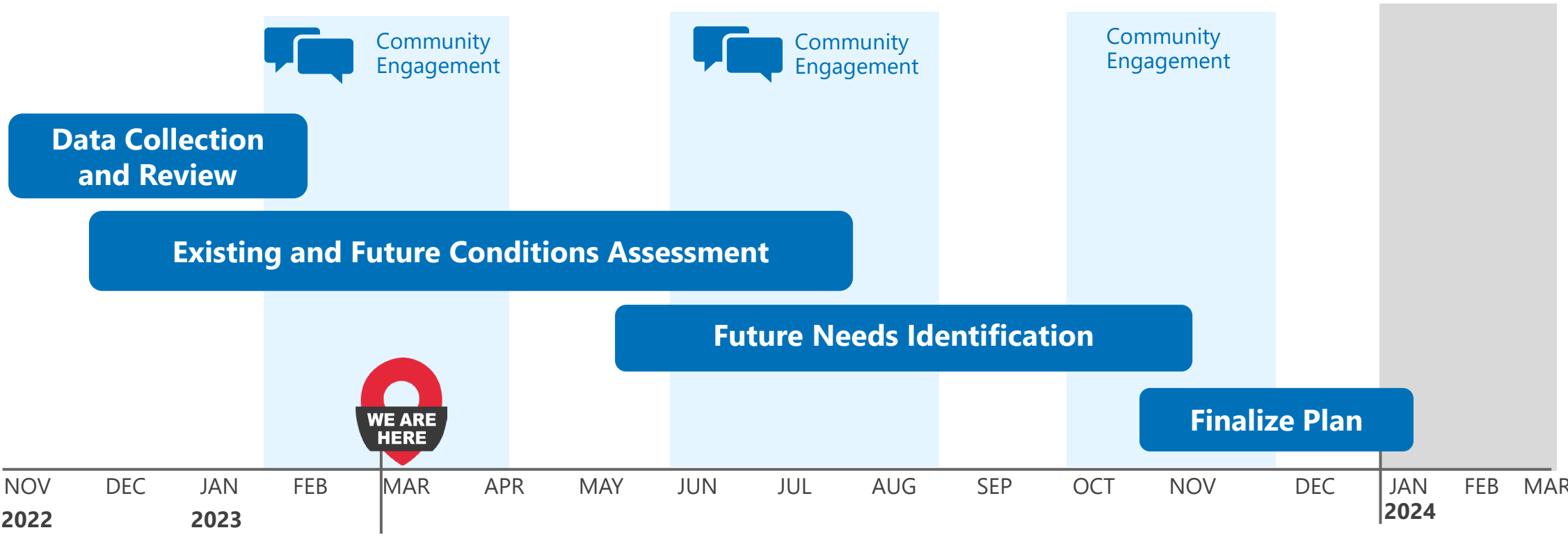


**Connected
Network Design
(Complete Modal
Networks, Street
Typologies, and Place
Types)**



**Comprehensive
and Truly
Multimodal
Transportation
Plan**

Study Schedule



Questions & Discussion





mesa·az