

EDUCATION AND WORKFORCE DEVELOPMENT ROUNDTABLE MINUTES

December 7, 2022

The Education and Workforce Development Roundtable of the City of Mesa met in the Mesa Fire and Medical Coyote Conference Room, 708 W. Baseline Rd., Bldg. 1., on December 7, 2022, at 1:34 p.m.

BOARDMEMBERS PRESENT	BOARDMEMBERS ABSENT	STAFF PRESENT
Councilmember Spilsbury, Chair	Kevin Broeckling	Andrea Alicoate
Councilmember Heredia, Vice Chair	Sally Harrison	Evan Allred
Dr. Perry Berry	Chad Wilson	Lisa Cartwright-Harris
Candace Copple	Vince Yanez	Tarrah Dofelmier
Dr. Dawn Foley		Lucy Hambright
Dr. Andi Fourlis		Melissa Hollenbeck
Dr. Shane McCord		Natalie Lewis
Rich Nickel		Lauren Lowe
Dr. Joe O'Reilly		Emily Mason
Jenny Jackson Robinson		Holly Moseley
Nicole Collins (designee for	COUNCIL PRESENT	Erin Romaine
Dr. Tammy Robinson)	None	Sarah Tolar
Katie Lohec Sondej*		
David Williams		

(*Participated in the meeting through the use of video conference equipment.)

1. Call meeting to order, welcome announcements and reminders from the Chair.

Chairperson Spilsbury called the meeting to order.

Chairperson Spilsbury welcomed Boardmembers, along with Nicole Collins and Administrative Support Assistant Emily Mason.

Chairperson Spilsbury presented the meeting dates for 2023 as follows: (**See Attachment 1**)

- Wednesday, March 1, 2023, at 1:30 p.m.
- Wednesday, June 7, 2023, at 1:30 p.m.
- Wednesday, September 6, 2023, at 1:30 p.m.
- Wednesday, December 6, 2023, at 1:30 p.m.

2. Take action to approve the Roundtable Meeting Minutes from September 14, 2022.

It was moved by Boardmember Jackson Robinson, seconded by Boardmember Copple, that the September 14, 2022, Education and Workforce Development Roundtable meeting minutes be approved.

Upon tabulation of votes, it showed:

AYES–Spilsbury–Heredia–Berry–Collins–Copple–Foley–Fourlis–McCord–Nickel–O’Reilly–
Jackson Robinson–Sondej–Williams
NAYS – None
ABSENT – Broeckling–Harrison–Wilson–Yanez

Chairperson Spilsbury declared the motion carried unanimously by those present.

3. Review of the Education and Workforce Development Roundtable Evolving Strategic Framework and Project recommendations.

- a. Julie Spilsbury, Councilmember and Roundtable Chairperson.

Chairperson Spilsbury introduced Education and Workforce Administrator Sarah Tolar and identified the three project recommendations: Mesa K-Ready, Mesa College Promise, and Workforce Pathway Alignment. She stated that these projects fall under the Roundtables strategic focus areas, including Early Learning Through High School, Post-Secondary, and Workforce Development. (See Pages 3 and 4 of Attachment 1)

4. Hear an update from City Staff on Community Literacy Initiative (Project #1) status.

Ms. Tolar stated that based on direction from the Roundtable, a citywide literacy task force was assembled. She commented that a representative from Read on Arizona attended the first meeting to guide the task force on best practices. She remarked that the mission of the literacy initiative is to promote the importance and love of reading through accessible materials and programs that ensure multi-generational readiness for school, career, and community. She noted the focus areas are community engagement, resource mapping, and alignment. She emphasized the importance of consistent messaging, raising awareness, and connecting and aligning groups already working on the initiative. She indicated plans to create a working group and develop strategies and action steps. (See Pages 5 and 6 of Attachment 1)

In response to a question from Boardmember Foley, Ms. Tolar stated she is working with representatives Terri Clark and Lori Masseur from Read on Arizona.

Boardmember Nickel pointed out that recent national test scores show a decline in all areas and demographics. He noted that Arizona schools are coming back at a faster pace for reading due to the strong strategic infrastructure in place. He highlighted strategies to help children become more resilient in their reading.

Boardmember O’Reilly explained that students who were disconnected from school and did not have resources at home are further behind and need additional focus.

5. Hear a presentation by Mesa Community College and City Staff about Mesa College Promise Program.

Carmen Newland, Senior Associate Vice President of Mesa Community College (MCC)

introduced Celina Salinas, Director of Strategic Enrollment Development at MCC and displayed a PowerPoint presentation on Mesa College Promise. **(See Attachment 2)**

Ms. Salinas explained Mesa College Promise is a public-private partnership with funding from the City of Mesa, local businesses, philanthropists, and community partners. She reported funds raised are administered through the Maricopa County Community College District Foundation (MCCCDF). She remarked that a team of MCC advisors at Mesa Public Schools (MPS) and recruiters are working with East Valley partners to promote and engage the program. (See Page 2 of Attachment 2)

Ms. Salinas remarked that students are recruited through their schools, community events, and direct outreach campaigns in partnership with the City. She noted that postcards are mailed to eligible residents in high school-age households. She added that a marketing and outreach plan is being developed for the next application cycle this spring. She outlined the enrollment process, including enrolling full-time at MCC, filling out the Free Application Federal Student Aid (FAFSA), and completing an online application to Mesa College Promise through MCCCDF. She explained that eligible applicants are notified of their acceptance and invited to the welcome celebration. She noted that for students to qualify for Mesa College Promise, they must be Mesa residents, recent graduates, and demonstrate financial need. She added that students that do not meet the criteria are notified and informed of alternate resources available through MCCCDF and other partners. (See Pages 3 through 5 of Attachment 2)

Ms. Salinas stated applications had increased from 200 to 978. She added that numbers are expected to grow as more connections are made with students, and people become aware of the program. She stated that students with incomplete files and missing high school transcripts would not qualify. (See Pages 6 through 9 of Attachment 2)

In response to a question from Chairperson Spilsbury, Ms. Salinas stated that the GPA requirement for the program is 2.0. She added that the students that were not accepted were ineligible for various reasons, and the program works with students to complete their files and become eligible.

Responding to an inquiry from Boardmember McCord, Ms. Newland remarked that funding for each student varies, and federal aid and scholarship funds are applied first. She explained various funding scenarios, noting that additional fundraising may be necessary based on program demand.

Councilmember Spilsbury clarified that students eligible for FAFSA and Mesa College Promise are likely to qualify for other funding sources, and Mesa College Promise fills the gap in funding.

Ms. Newland stated that some families with an estimated contribution of \$7,500 and \$10,000 received the full tuition of \$1,285 plus a stipend of \$250 per semester.

Responding to a question by Boardmember Nickel, Ms. Salinas reported the required 2.0 GPA was established to increase access and is consistent with all other scholarship funding. She remarked that Mesa College Promise is a last dollar program and once all other scholarship resources and Federal Pell Grants are exhausted, tuition is covered by the program. She explained that if tuition is fully funded by all other programs, then Mesa College Promise would provide a \$250 stipend each semester.

Ms. Salinas presented the Mesa College Promise dashboard and highlighted admission

demographic data including age, area, program of study, and applicant location.

Responding to a question from Vice Chairperson Heredia, Ms. Newland stated there were 195 students in the fall of 2022 and 88 students in the fall of 2021. She noted that 78% of students continued from the fall semester to the spring semester. She added that of the 88 who started, 72% persisted from fall to fall, which is higher than the post-pandemic rates.

Ms. Salinas highlighted the programs most students opt into, the average number of credit hours taken, and the average GPA for the 2021 cohort. She noted it would take three years to see student success data results.

Ms. Newland commented that completing 12-15 credits indicates whether students are on track to graduate with an associate degree. She explained that if students fall below 12 credit hours, an advisor can grant them a waiver to take nine credit hours and still receive funding.

In response to a question from Chairperson Spilsbury, Ms. Newland stated student transfer data can be obtained through the National Clearinghouse.

Ms. Salinas highlighted student support and engagement activities and various ways to connect students to campus and community partners. (See Page 11 of Attachment 2)

Ms. Newland pointed out that each Mesa College Promise student is eligible to receive an Apple iPad, keyboard, and pencil for personal use.

Ms. Salinas requested the Roundtable help build awareness to ensure students apply and renew the FAFSA.

Boardmember Nickel stated that MPS had been one of FAFSA's most creative problem solvers and had won a national competition. He added that Mesa ranked high in FAFSA completion compared to the rest of the state and indicated improvement would come from a targeted focus on the program.

Ms. Salinas highlighted future opportunities including establishing partnerships through mentorship and job shadowing, connecting students to build leadership capacity and workplace readiness. She discussed expansion opportunities and advanced data sharing agreements. She explained the intent is to remove barriers for students.

Ms. Newland noted opportunities to remove barriers include auto-admitting students from high school to MCC and automatic transcript sharing.

Chairperson Spilsbury thanked Ms. Newland and Ms. Salinas for the presentation.

6. Hear a presentation by Chair, City and Mesa Community College Staff on discussion and recommendations for Roundtable action steps regarding Project #2.

Ms. Tolar emphasized removing barriers for students and increasing data-sharing opportunities. She noted the importance of ensuring students complete the FAFSA and submit high school transcripts. She explained that dual enrollment is an excellent opportunity to earn college credit in high school, and the program has many grant and tuition assistance opportunities. (See Pages 8 through 11 of Attachment 1)

Ms. Salinas discussed a partnership with MCC, ElevateEdAZ, the Phoenix Chamber of Commerce, and district partners at MPS and Maricopa Community College districts to expand dual enrollment. She highlighted incentives for teacher engagement, stipends, and a grant partnership. She discussed real-time surveying of students to gather data, determine barriers and develop strategies. She noted that increased classroom assistance, campaigning, and weekly monitoring resulted in a 12% to 18% increase in dual enrollment for the fall semester. She stated MCC continues to work with partners to deliver on outcomes.

Ms. Tolar stated that work is being done to support students at the state level. She noted the importance of moving the needle on educational attainment and incentivizing adult learners to return to school. She compared Mesa job postings educational attainment and Mesa Population educational attainment. She pointed out the oversupply of jobs requiring an associate degree or higher and an undersupply of qualified candidates. She reported the City of Mesa's educational attainment rate is 37%. (See Page 12 of Attachment 1)

Ms. Tolar noted that federal aid and merit-based scholarships require the FAFSA, and students are 63% more likely to enroll in post-secondary education if they complete the FAFSA. She reported that post high school enrollment in Mesa is at 42.63% and 46.25% in the state. She displayed national FAFSA completion statistics and pointed out Pell Grant dollars that were not utilized. (See Pages 13 and 14 of Attachment 1)

Ms. Tolar highlighted statewide best practices and explained that the Arizona FAFSA Challenge is working to raise school awareness and create healthy competitiveness. She added that the Arizona Board of Regents collects real-time student data to target and support specific students. She highlighted program initiatives, including Advise AZ, peer/near-peer mentors, embedded college and career advisors, financial aid events, and FAFSA family nights. She stated marketing campaigns were developed at the state and local levels to raise awareness, engage the community, and create partnerships, resulting in eight states implementing a FAFSA requirement for graduation. She commented that this requirement had resulted in a positive impact on post-secondary enrollment. She noted that the FAFSA application process had been simplified at the national level. (See Pages 15 and 16 of Attachment 1)

Chairperson Spilsbury thanked staff for the presentation.

7. Discuss and provide direction on recommendations for Project #2 action steps.

Ms. Tolar opened the meeting for discussion on the Mesa College Promise Program. (See Page 17 of Attachment 1)

Boardmember Nickel described Ask Benji, an Artificial Intelligence (AI) chatbot designed to help students, parents, and educators receive answers to questions about the FAFSA. He explained the easiest way to gain access to the chatbot is for the school to provide a data-sharing agreement allowing Ask Benji access to students' names, phone numbers, and birthdays. He remarked that from that data, Ask Benji can match students up with the National Student Loan Data System. He pointed out that schools offering this service have higher FAFSA completion rates.

In response to comments by Boardmember Copple, Ms. Tolar discussed marketing opportunities with social service organizations and providing tax assistance to families.

Ms. Salinas stated Mesa College Promise offers outreach opportunities in Mesa public libraries to engage job seekers and community members and help them move forward.

Boardmember O'Reilly indicated that tax companies inform their taxpayers about FAFSA.

Responding to questions from Vice Chairperson Heredia, Boardmember Nickel reported challenges in adopting legislation at the State level. He indicated that the Universal FAFSA completion states have large, targeted, need-based scholarship and grant programs that are well-funded and well-marketed. He added that Tennessee, the leading state in the country, offers free school with FAFSA completion.

In response to additional questions from Vice Chairperson Heredia, Boardmember O'Reilly remarked that school boards set the graduation requirements for each district and could set them above what the state requires.

Boardmember Fourlis stated that FAFSA completion contributes towards a school letter grade through the College Career Readiness index points. She commented that FAFSA completion is part of the formula for a percentage of their letter grade, which the state letter grade foundation provides.

Responding to a question from Chairperson Spilsbury, Boardmember Foley reported that school boards are very instrumental in supporting the work being done at the school level, and the results are positive.

Chairperson Spilsbury emphasized the importance of supporting parents with dual enrollment and FAFSA completion.

Responding to a question from Chairperson Spilsbury, Boardmember Nickel noted privacy concerns are commonly given in FAFSA feedback. He indicated that state legislators influence school boards and board members to discourage families from completing FAFSA. He explained some believe post-secondary education is not valuable or perceive the federal government promotes student debt. He pointed out that the data sharing required for Ask Benji is not threatening.

Boardmember Berry discussed feedback and concerns from the Queen Creek community regarding FAFSA. He remarked that the school district is trying to change the focus from college to career.

Boardmember McCord suggested that high median-income communities may view FAFSA as unnecessary.

Boardmember Nickel indicated schools and providers use FAFSA information as a mechanism to provide scholarships, and many middle-income students miss out on scholarship money due to not completing that paperwork.

Boardmember O'Reilly noted Basis Schools are generally high-income families and have the highest FAFSA completion rate in the state.

Boardmember Fourlis commented that students in the LDS community are encouraged to complete the FAFSA before departing on a mission.

In response to comments from Chairperson Spilsbury, Ms. Salinas stated Gilbert Public Schools has inquired about Mesa College Promise. She noted that targeted zip code marketing is sent out to students and adults with a GED. She emphasized the importance of increasing and leveraging partnerships to connect with adult learners and K-12 partners to support Mesa residents. She added

that the outcomes of the dual grant initiative are phenomenal.

Boardmember Berry suggested it would help to have a tool kit or a one-page resource of sample marketing tools to simplify the FAFSA information needed to execute at the school level.

Boardmember Fourlis advised that Cash for College is a marketing term used to raise awareness and promote the completion of the FAFSA.

Responding to a question from Vice Chairperson Heredia, Ms. Tolar noted the importance of joining together as a community to bring awareness and consistent marketing. She stated she would be contacting representatives for the FAFSA completion task force.

8. Hear an update from City Staff on Workforce Center @ Mesa Grand Opening.

Ms. Tolar announced the grand opening of the Workforce Center on December 8, 2022, which will include an open house and presentation. She commented that the Workforce Center, a partnership between ARIZONA@WORK, A New Leaf, and the City of Mesa, provides free workforce services to residents. (See Pages 18 through 22 of Attachment 1)

9. Call to the public.

There were no public comments.

10. Call for future agenda items.

Boardmember Nickel noted that in early 2023, a major economic report would be produced on the value of education and attainment in Arizona. He added that the report would provide data on the impact of COVID on disrupted learning by sector and region in the state.

11. Adjourn.

Without objection, the Education and Workforce Development Roundtable meeting adjourned at 3:01 p.m.

I hereby certify that the foregoing minutes are a true and correct copy of the minutes of the Education and Workforce Development Roundtable meeting of the City of Mesa, Arizona, held on the 7th day of December 2022. I further certify that the meeting was duly called and held and that a quorum was present.

HOLLY MOSELEY, CITY CLERK



CITY OF MESA EDUCATION AND WORKFORCE DEVELOPMENT ROUNDTABLE

Wednesday, December 7th

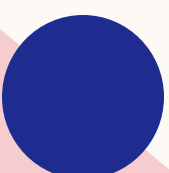
2023 MEETING DATES

March 1, 2023

June 7, 2023

September 6, 2023

December 6, 2023



Operative Objective: We share expertise to coordinate goals, amplify resources, track data and advise the City Council on the highest priorities will strengthen, streamline and align Mesa's education (early learning through post-secondary) and its workforce needs.

Early Learning through High School

- Priorities**
- Equitable access to quality early learning
 - Increase graduation rates
 - Teacher recruitment & retention
 - Clear post-secondary career path for all graduating seniors

#2 Post-Secondary

Strategic Focus Areas

- Priorities**
- Graduate workforce-ready students & adults
 - Increase post-secondary enrollment through marketing of opportunities
 - Help students/families seek technical & financial assistance
 - Support Mesa's adults to compete for immediate placement in the workforce

#3 Workforce Development

- Priorities**
- Affordable & equitable access to upskill, train and educate Mesa's residents
 - Improve link between ed pathways & industry needs
 - Leverage partnerships, engage residents, business & industry to understand need, provide access & training

Highlighted Performance Metrics

- # of students enrolled in preschool & equitable distribution across programs
- Diversity & equity of early learning staff
- % of on-time HS grad rates
- Drop-out rates for HS serving Mesa families
- Annual averages in Mesa teacher pay/compensation

- Post-secondary enrollment statistics
- Completion percentages in post-secondary degree/certification programs
- Mesa College Promise data
- % of Mesa adults with post-secondary credential

- # of Mesa businesses partnering with HS and post-secondary education
- % of post-secondary grad job placement
- Mesa unemployment rates
- Mesa job demand by industry

Project Summary

Strategic Focus Area	#1 - Early Learning through High School	#2 - Post-Secondary	#3 - Workforce Development
Project	Mesa K-Ready	Mesa College Promise	Workforce Pathway Alignment
Priority Area	<ul style="list-style-type: none"> Provide equitable access to quality early learning for Mesa families. 	<ul style="list-style-type: none"> Ensure all graduating seniors have strong, fundamental education and life skills and have a clear post-secondary career path that aligns passion, professional interest and workforce needs. Increase post-secondary enrollment in Mesa by marketing the variety of post-secondary opportunities. Help students/families seek both technical and financial assistance. 	<ul style="list-style-type: none"> Provide affordable and equitable access to upskill, train and educate Mesa’s residents (student and adults) to respond to the workforce needs of Mesa’s industry now and in the future.
Status	Community Literacy Task Force		

MESA LITERACY INITIATIVE UPDATE



- Initial meeting: Oct. 27th
- Follow-up meeting: Nov. 15th
- Process



MESA COMMUNITY LITERACY INITIATIVE

Mission: To promote the importance and love of reading through accessible materials and programs that ensure Mesa's multi-generational readiness for school, career and community.

- **Focus areas:**

- Community Engagement
- Resource mapping & alignment
 - System building

- **Next steps:**

- Working groups
- Strategies

MESA COLLEGE PROMISE PROGRAM



Dr. Andrew Stone – Dean of Enrollment Development

Mrs. Celina Salinas – Director of Strategic Enrollment Development

DISCUSSION OPPORTUNITIES



WHO ARE WE IMPACTING?

- REACH
- TARGET PARTICIPATION



HOW CAN WE INCREASE OUR IMPACT?

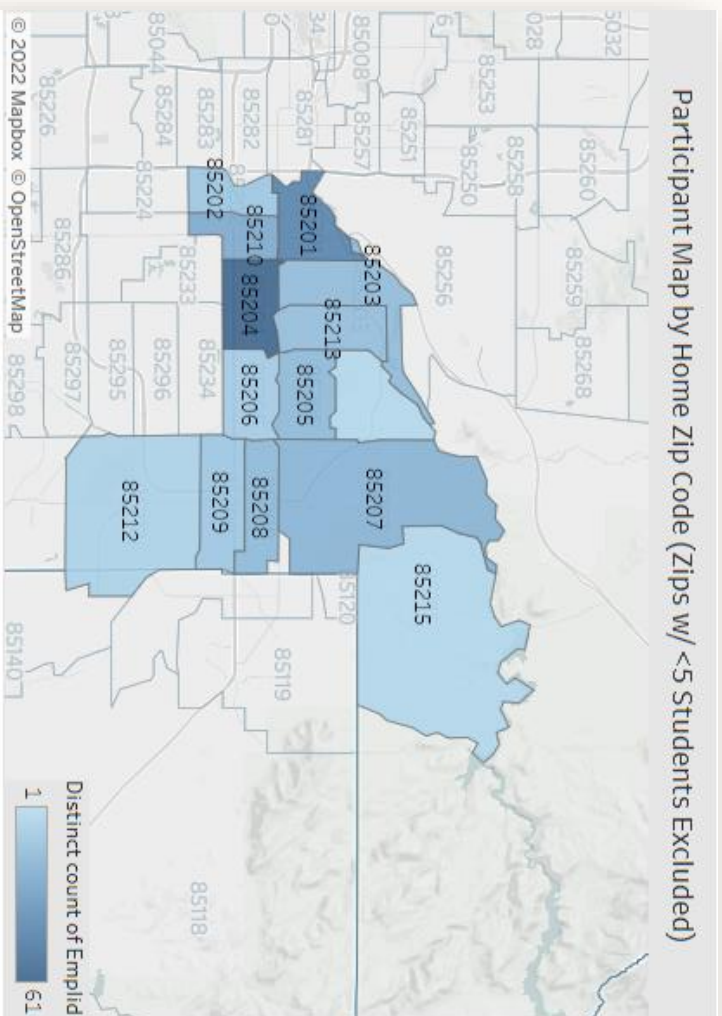
- DATA CONNECTION/SHARING
- FAFSA COMPLETION



WHO ARE WE REACHING?

Bus Area 2 Priority Alignment:
*Graduate workforce-ready students & adults.
 Increase post-secondary enrollment through marketing of opportunities.
 Help students/families seek technical & financial assistance.*

Mesa College Promise Class of 2021 Cohort:



Mesa Promise Students by High School		
	≡ High School Name	≡
High School District		
Mesa Public Schools	Mesa High School	76
	Westwood High School	48
	Mountain View High School	42
	Skyline High School	37
	Red Mountain High School	33
	Dobson High School	19
Other Public/Charter or Private Districts, Ged or Home School	<5 Students at the School	12
Charter High Schools	Avete Preparatory Academy Great Hearts	9
Gilbert Unified District	Desert Ridge High School	6

APPLICATION & ENROLLMENT PROCESS

Fall 2022 Applications <small>* (Fall 2021 approx. 200)</small>	
Applied	978
Ineligible	736
Approved	204

Top identified reasons for ineligibility:

- City of residence
- Incomplete or no FAFSA
- No HS Transcript
- HS Graduation Year

College Promise Internal Team Focus Areas:

- Opportunity to auto-award qualified students
- Simplify application process for students
- Minimize # of students ineligible due to application materials

Exploration:

- Automate/streamline data-sharing between high schools and Community College District
- Identify effective existing data partnership/agreement models (state/national)

TARGET POPULATION DISCUSSION: HS DUAL ENROLLMENT STUDENTS

Dual Enrollment Opportunities:

Mesa Community College:

- All MPS High Schools
- Four Gilbert High Schools (specific programs)
- Higley High School (specific programs)

• Chandler-Gilbert Community College:

- GPS High Schools
- Higley High Schools
- QC High Schools

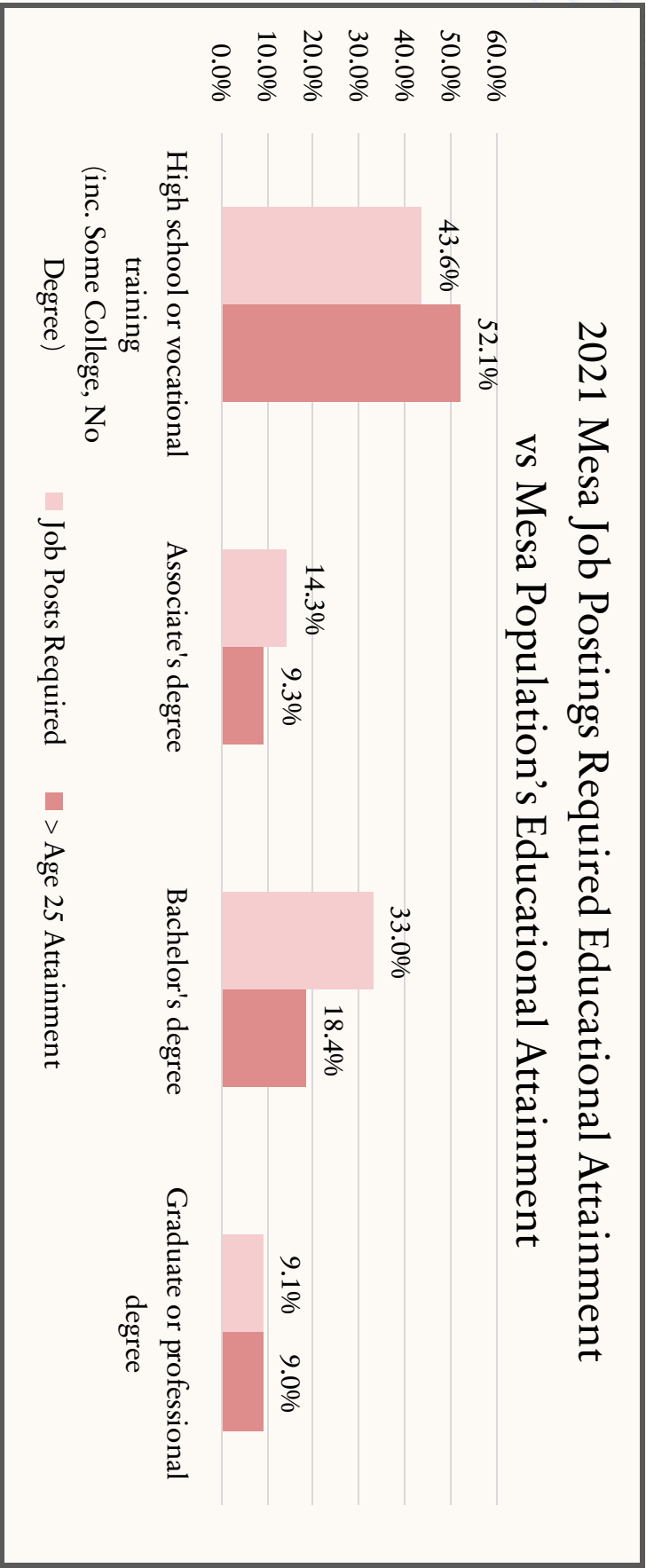
• **DE Maricopa Grant Tuition Assistance:**

- Funds issued on a first-come, first-serve basis
- Demonstration of financial need (indicated if household income falls below 200% of poverty guidelines)
- 12 credit hours per student per year

• **Fall 2022 Dual Enrollment Project:**

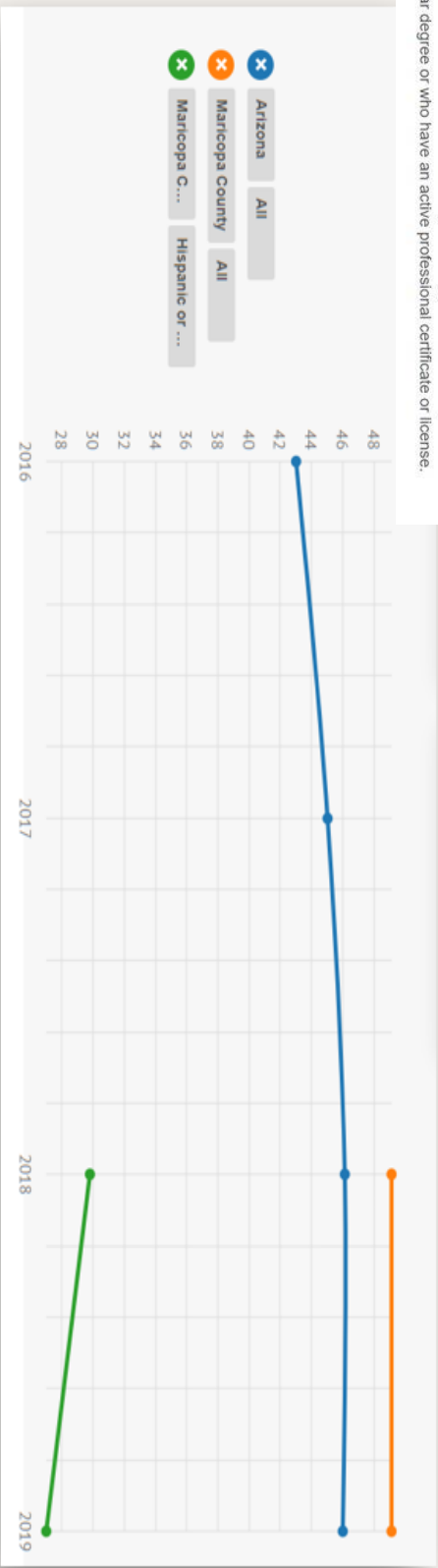
- Grant Partnership – ElevateEdAZ/MPS/PXU
- Resources, strategies and research to grow Dual Enrollment accessibility and impact.

TARGET POPULATION DISCUSSION: SOME COLLEGE, NO DEGREE



ATTAINMENT

Percent of Arizona residents 25-64 years of age who have completed a 2- or 4-year degree or who have an active professional certificate or license.



25 and older, Associate's Degree or Higher	37.5%
City of Mesa	

Source: U.S. Census Bureau, 2016-2020 American Community Survey 5-Year Estimates

FAFSA COMPLETION

us Area 2 Priority Alignment:

*increase post-secondary enrollment through marketing of opportunities.
Help students/families seek technical & financial assistance.*

What is it? Free Application for Federal Student Aid.

- It enables students and families to apply for federal student aid, such as grants, work-study, and loans. Together, these types of federal student aid amount to the largest source of financial aid available to help students pay for college. It gives students access to the largest source of financial aid to pay for college or career school.
- Many colleges and programs use FAFSA information to determine eligibility for state and school aid, and some private financial aid providers may FAFSA information to determine whether students qualify for aid.

Why is it important?

FAFSA #s:
State-wide goal: 60%
Mesa: 49% (2021)



According to the National College Access Network, **high school seniors who complete the Free Application for Federal Student Aid (FAFSA) are 63 percent more likely to enroll in post-secondary education than students who do not complete the FAFSA.**

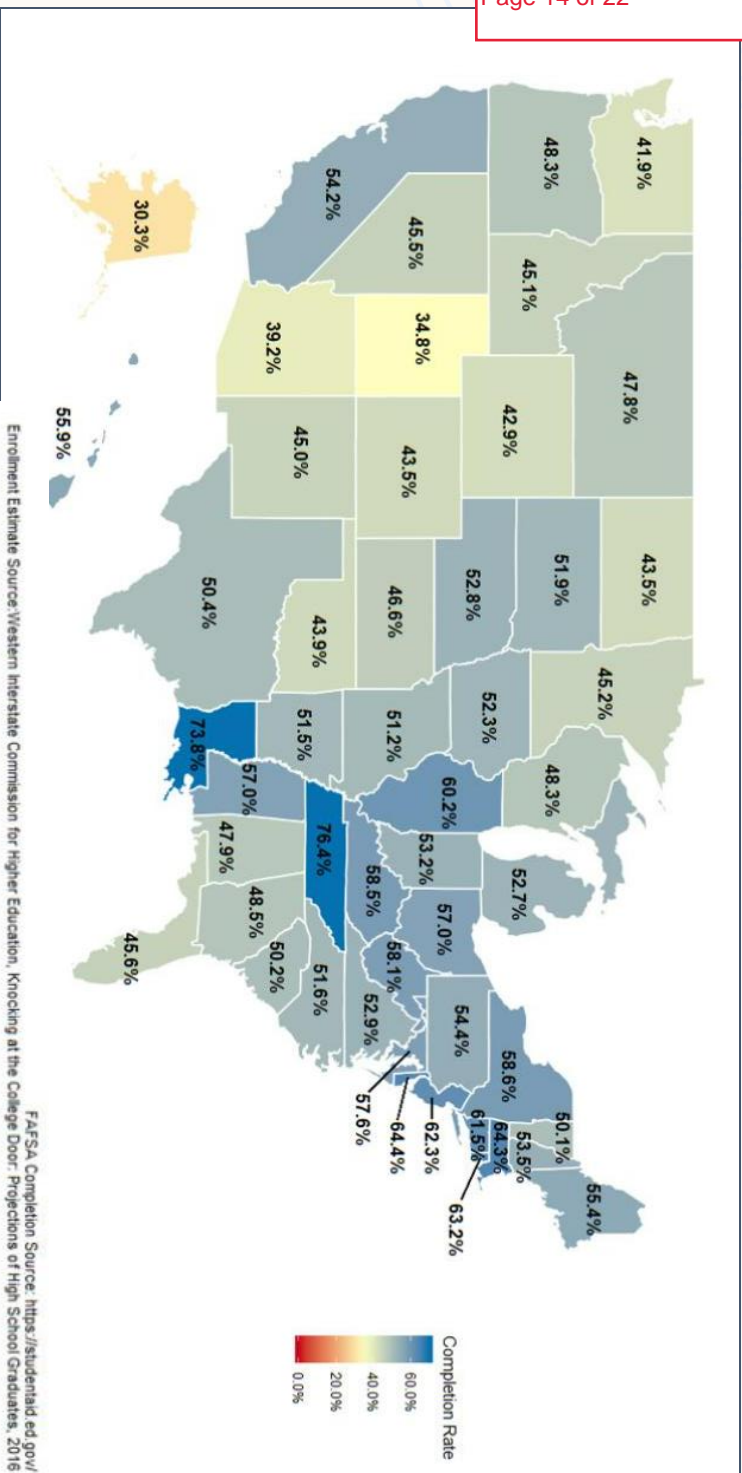


2020 Post-HS Enrollment #s:
Arizona: 46.25%
City of Mesa: 42.63%

Source: AZ FAFSA Dashboard

*Source: Education Forward Progress Meter - 2019, 1-Year Public Use
Microdata Series Person File for Arizona, from U.S. Census Bureau, Current
Population Survey, 2019*

2019 (May) FAFSA Completion %

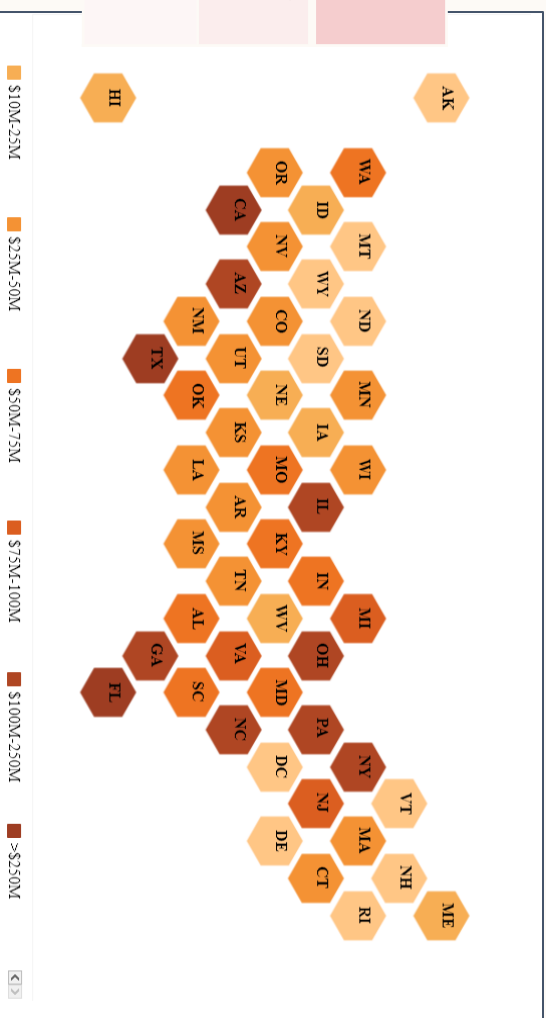


2021 Pell Grant \$ Left on the Table

AZ \$104,475,997

Nat'l Rank #10

Source: NCAN.org



US 2021 FAFSA Completion %

Top 5

TN	71%
LA	68%
DC	67%
IL	66%
RI	63%

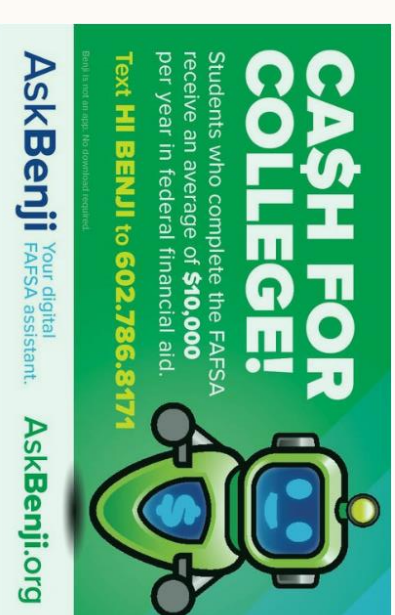
Bottom 5

AZ	45%
NM	45%
OK	41%
AK	37%
UT	37%

Source: NCAN.org

STATEWIDE BEST PRACTICES

- **State-wide:**
 - AZ FAFSA Challenge
 - Real-time completion data updates
 - Student-level data-sharing with school counselors
 - Program initiatives:
 - AdviseAZ
 - Peer/near-peer mentors
 - Ask Benji
 - Embedded college/career advisors
 - Financial aid events
 - FAFSA family nights



NATIONAL BEST PRACTICES

National FAFSA Completion Practices:

- FAFSA Completion Initiative
 - AZ FAFSA Challenge
- Marketing campaigns
 - Consistent outreach and messaging
 - Community-engaged, volunteer training
 - Awareness: early and often
- Community partnerships
- Policy
 - Reform and simplification
 - Universal FAFSA completion
 - Louisiana, Texas, Illinois, Alabama, Colorado, New Hampshire, Maryland, California



	Enrollment	FAFSA	Awareness/Target Population
<p>Strategic Focus Area</p> <p>2: Priority Alignment</p>	<ul style="list-style-type: none"> Increase post-secondary enrollment through marketing of opportunities. Help students/families seek technical & financial assistance. 	<ul style="list-style-type: none"> Increase post-secondary enrollment through marketing of opportunities. Help students/families seek technical & financial assistance. 	<ul style="list-style-type: none"> Graduate workforce-ready students & adults. Increase post-secondary enrollment through marketing of opportunities. Help students/families seek technical & financial assistance.
<p>Discussion points</p>	<ul style="list-style-type: none"> Automatic award process Data sharing models 	<ul style="list-style-type: none"> National/state/local best practices Marketing opportunities Community partnerships 	<ul style="list-style-type: none"> Expanded program access and reach
<p>Opportunity for impact</p>	<ul style="list-style-type: none"> Creating a culture of post-secondary enrollment Removing barriers for students 	<ul style="list-style-type: none"> Increasing post-secondary enrollment 	<ul style="list-style-type: none"> Expanding impact of program



Workforce Center

@ M E S A



Grand opening: Thursday, December 8th

ation & Contact

- **635 E. Broadway Rd. Mesa, AZ 85204**

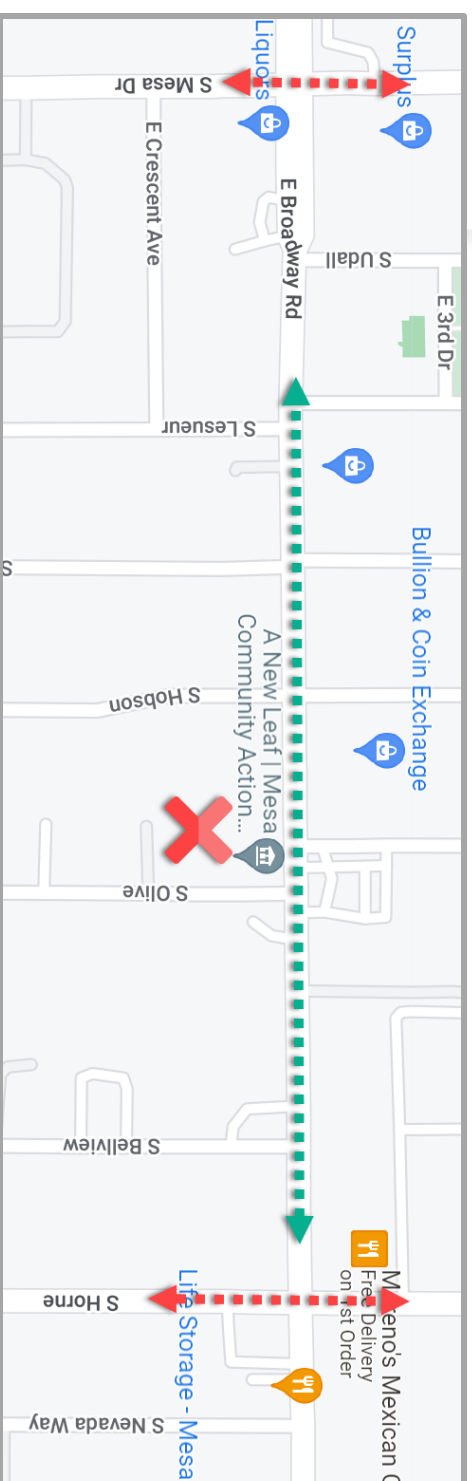
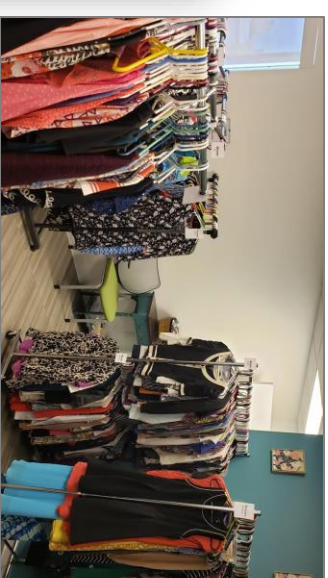
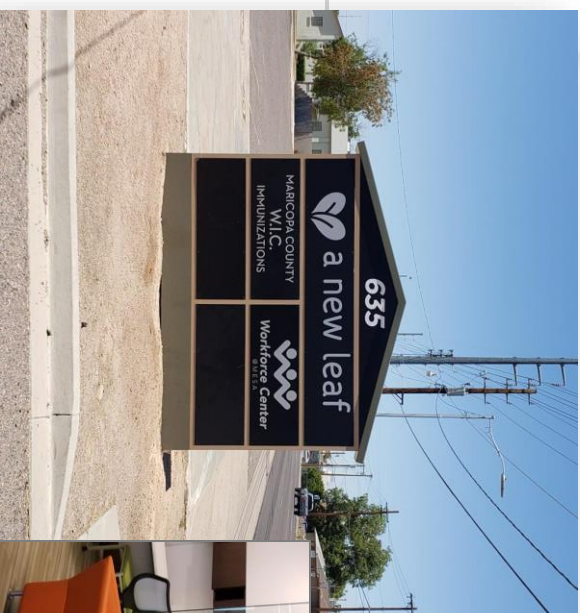
- 2nd Floor of A New Leaf/MesacAN building

- **Hours of operation:**

- Monday-Thursday: 8 am – 5 pm
- Friday: 8 am - 4:30 pm
- Closed on Weekends and Holidays
- Recommend arriving 1 hour before closing without an appointment

- 480-769-7417

- www.mesaaz.gov/workforcecenter



Who we are

- Partnership
- Provide free workforce services to the local community
- Career Assistance, Business Services and tailored wrap-around support services
- English and Spanish services



MARICOPA COUNTY

A proud partner of the American **Job** Center network

ving our Community

Adults 18 or older

- Citizen or Non-

Citizen authorized to work in the U.S.

- Veterans (priority of service)
- Re-entry
- Justice involved
- Individuals experiencing housing insecurity (homeless, domestic violence, shelters)
- Individuals with disabilities
- Local businesses and non-profit organizations

Programs and Services

- Develop, refine, and update resume
- Registration on [AZ Job Connection](#), Arizona's largest workforce database
- Career guidance and assessment
- ONET interest profiler
- Customized employment search
- Job seeker workshops and training opportunities
- Interview workshops
- Employment Academy virtual workshops
- BankWork\$ career training program
- Occupational skills training and apprenticeship programs (WIOA)
- Financial wellness coaching and workshops
- Job Club & Hiring Events



Community
Engagement



Workforce Development



Business Services



Partnerships



Wrap-Around Services

GRAND OPENING CELEBRATION



Workforce Center

@ M E S A



PLEASE JOIN US

The City of Mesa invites you to celebrate the launch of our partnership with A New Leaf Workforce Services and Maricopa County ARIZONA@WORK. The Workforce Center @ Mesa provides workforce services and referrals to wrap around services to our Mesa community. In support of the Council Strategic Priority of a skilled and talented workforce.

Thursday, December 8th

Workforce Center @ Mesa

635 E. Broadway Rd. Mesa, AZ 85204 (2nd Floor)

10:30am | Presentations

11:00am | Open House

1:00pm | Public Open House

RSVP | erin.romaine@mesaaz.gov



Mesa College Promise

Current State & Next Steps
Prepared for Mesa Education & Workforce Roundtable
December 2022



**MESA
COMMUNITY COLLEGE**
A MARICOPA COMMUNITY COLLEGE



Mesa College Promise is a commitment from the City of Mesa to its residents that all eligible graduating Mesa high school students can attend Mesa Community College for two years with Arizona resident tuition and fees fully funded.

The Mesa College Promise is a public-private partnership with funding coming from the City of Mesa and Mesa businesses and philanthropists. Funds raised are administered through the Maricopa County Community College District Foundation(MCCCDF), the 501(c)(3) nonprofit organization designated by the Maricopa County Community College District to receive and manage gifts on behalf of its 10 colleges.

Delivery of the program is a collaborative effort by City of Mesa, Mesa Community College staff including; MCC Embedded Advisors at Mesa Public High Schools, and a dedicated Mesa College Promise Coordinator (MCC).



ent State - Application Process

Recruitment & Marketing:

- Students are recruited at the high school and through community events, direct outreach and recruitment efforts led by MPS staff, and collaborative advertising and public relations communication.

Application Process:

- Complete an application for admission to MCC
- Submit the FAFSA
- Complete an online application to Mesa College Promise through Maricopa Foundation Portal



ent State - Application Review

Acceptance & Next Steps:

- Applications are reviewed for completeness and eligibility. Students are contacted by MCC Advisors or Promise Coordinator for additional information, as needed.
- Upon receipt of all required materials and completion of enrollments tasks; students are contacted directly with acceptance or notice of declination.



ent State - Award Notification

Acceptance & Next Steps:

- Once admitted into the program students receive an invitation to the Mesa College Promise welcome event.
- Declined students will be provided with a disqualifying reason, and extended information about other program opportunities and additional scholarship resources.



ent State - Fall 2021

- 88 Total Students

Race/Ethnicity	
Hispanic	55
White	21
American Indian	5
Black	4
All Other Populations	3



ent State - Fall Numbers



Gender	
Female	51
Male	37
First Generation	
Yes, First Gen.	63
Not, First Gen	18
Unknown	7



Mesa Community College Promise-Application Summary



Application Summary

Applied Fall 21 200	Applied Fall 22 978
Accepted Students Fall 21 88	Accepted Students Fall 22 195

Ineligible Reason(s)

- Live outside Mesa
- No FAFSA
- No HS Transcript
- Not Recent HS Grad



ent State - Total Program Enrollment

Link to newest dashboard for review:

[Mesa College Promise Dashboard 2022](#)



2022 Goals



- Create a series of activities and programs to bring the Promise cohort together and to support both first and second year students.
- Double the total number of new student participants in the Promise program.



State - Student Engagement & Support



- Welcome Celebration
- Fall & Spring Event Programming
- iPad Learning Device & Training
- Engagement Badging System
- Connecting with Campus Partners
 - TRIO
 - Tutoring & Counseling
- Connecting with Community/Industry Partners
 - City of Mesa
 - Meta
 - Apple
 - Education Forward Arizona



re State Outreach & Support

Second-year Students

- Internships/Job Shadowing/Mentoring
- Field of Interest Activities
- University Transfer
- Graduation Celebration



Observations & Future Opportunities

- Focus on FAFSA completion
- Establish direct partnerships with business and industry partners
- Explore expansion opportunities to additional student groups
- Implement data sharing agreements with East Valley school districts (high school transcripts)



Observations & Future Opportunities (2)

- Application Requirement
- FAFSA Completion
- Recent High School Graduate/GED
- City of Mesa Resident
- Lack of Awareness





Questions?

Thank you for your partnership.

