

CERTIFICATION



DISCLAIMER

THESE PLANS ARE COPYRIGHTED AND ARE SUBJECT TO COPYRIGHT PROTECTION AS AN "ARCHITECTURAL WORK" UNDER SEC. 102 OF THE COPYRIGHT ACT, 17 U.S.C. AS AMENDED DECEMBER 1990 AND KNOWN AS ARCHITECTURAL WORKS COPYRIGHT PROTECTION ACT OF 1990. THE PROTECTION INCLUDES BUT IS NOT LIMITED TO THE OVERALL FORM AS WELL AS THE ARRANGEMENT AND COMPOSITION OF SPACES AND ELEMENTS OF THE DESIGN. UNDER SUCH PROTECTION, UNAUTHORIZED USE OF THESE PLANS CAN LEGALLY RESULT IN THE CESSATION OF CONSTRUCTION OR BUILDINGS BEING SEIZED AND/OR MONETARY COMPENSATION TO COTTON ARCHITECTURE + DESIGN LLC.

PROJECT INFORMATION

CTC PROPERTIES LLC
Longbow Business Park Lot 7
5400 E McDOWELL RD
MESA, AZ 85215

PROJECT #: 22036

ISSUE
DRB / P&Z SUBMISSION

ISSUE DATE
11/10/2022

ISSUE REVISIONS

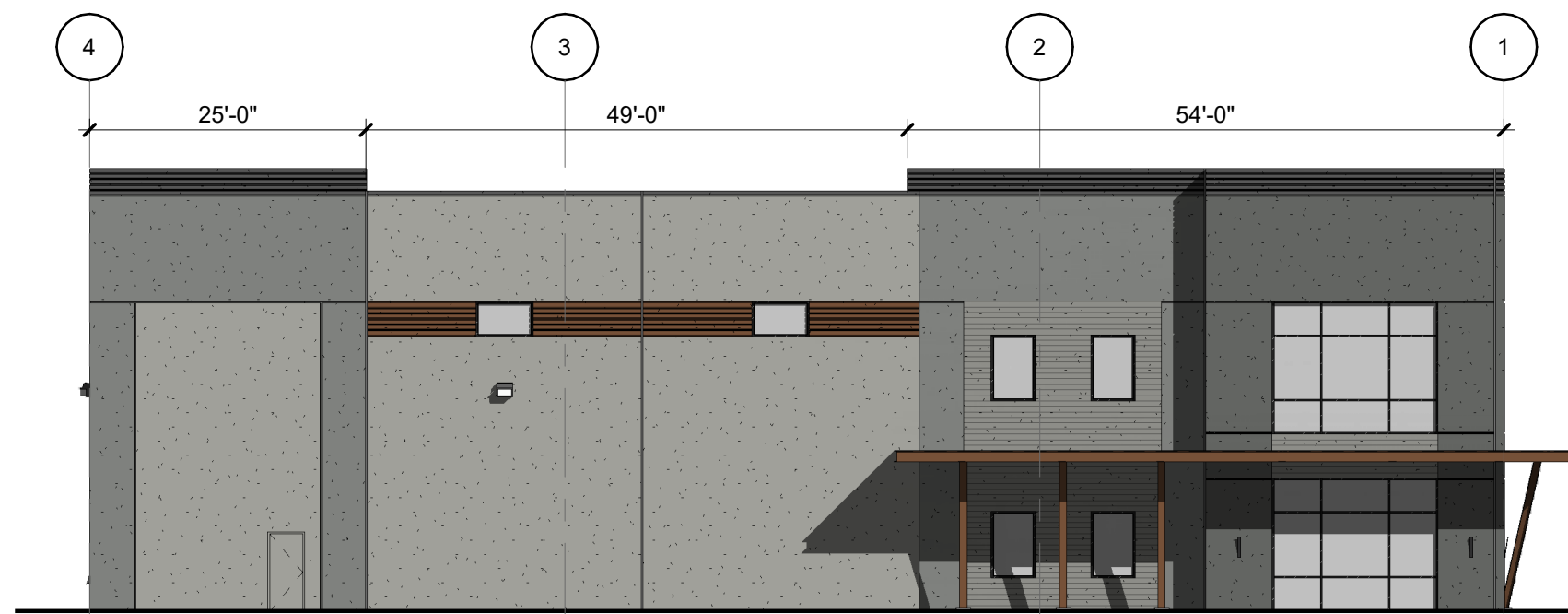
#	Date	Description
1	2/16/23	Updated

SHEET NAME
PRELIMINARY EXTERIOR
ELEVATIONS - OVERALLS

AP005

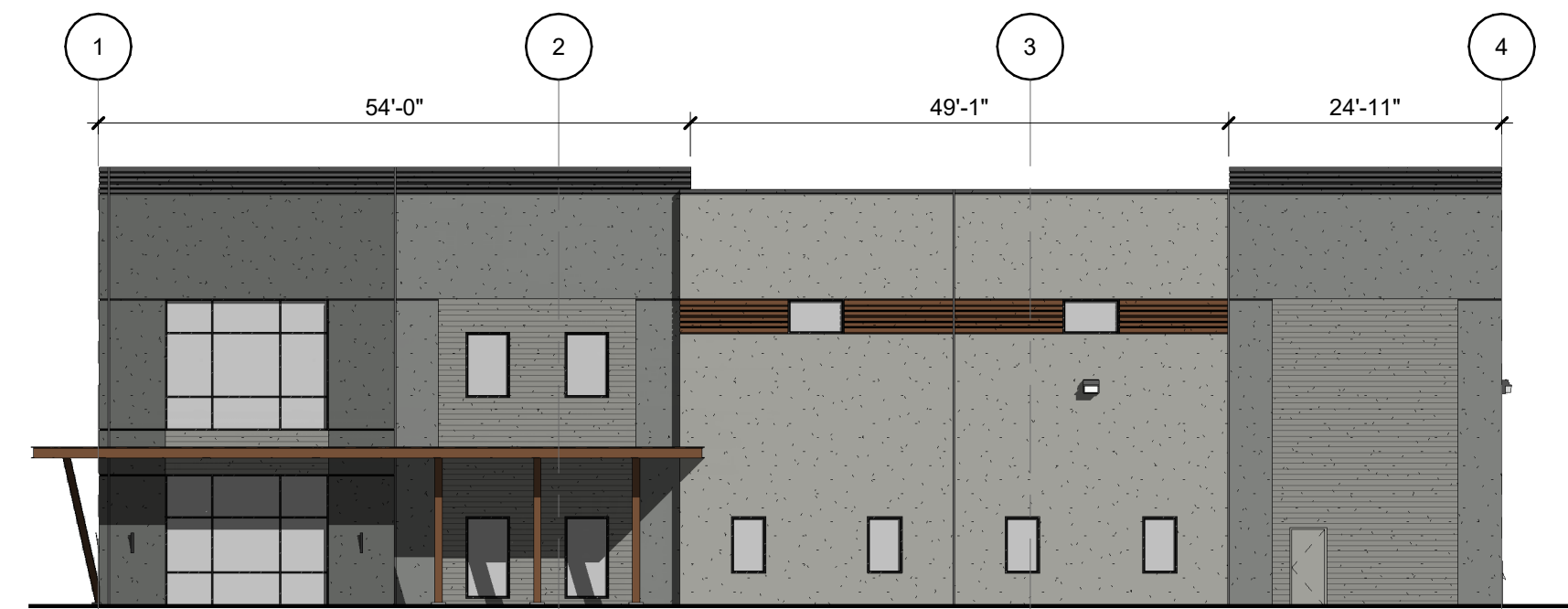


1 EAST ELEVATION - OVERALL
AP005 1/16" = 1'-0"
0'-0" 8'-0" 16'-0" 32'-0"

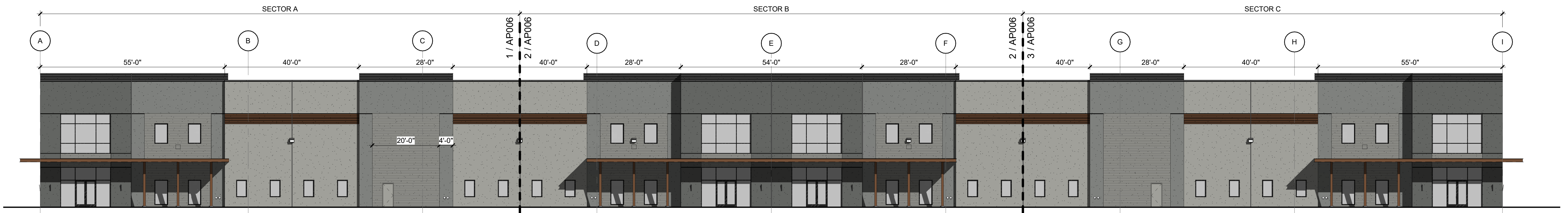


2 NORTH ELEVATION - OVERALL
AP005 1/16" = 1'-0"
0'-0" 8'-0" 16'-0" 32'-0"

MATERIAL QUANTITIES		
MATERIAL	MATERIAL AREA	% OF EACH FACADE
EAST ELEVATION		
DENSE REVEAL PATTERN	1,002.9	6.7%
STOREFRONT	245.4	1.6%
TILT-UP CONCRETE	13,826.2	91.7%
	15,074.5	100.0%
NORTH ELEVATION		
DENSE REVEAL PATTERN	310	6.2%
STOREFRONT	488.8	9.8%
TILT-UP CONCRETE	3,731.3	74.7%
WOOD GRAIN FORM LINER	468	9.4%
	4,998.1	100.0%
SOUTH ELEVATION		
DENSE REVEAL PATTERN	310.2	6.2%
STOREFRONT	566.2	11.3%
TILT-UP CONCRETE	3,213.5	64.3%
WOOD GRAIN FORM LINER	908.1	18.2%
	4,997.9	100.0%
WEST ELEVATION		
DENSE REVEAL PATTERN	1,206.7	7.1%
STOREFRONT	2,132.6	12.5%
TILT-UP CONCRETE	10,620.4	62.2%
WOOD GRAIN FORM LINER	3,120.2	18.3%
	17,079.8	100.0%



3 SOUTH ELEVATION - OVERALL
AP005 1/16" = 1'-0"
0'-0" 8'-0" 16'-0" 32'-0"



4 WEST ELEVATION - OVERALL
AP005 1/16" = 1'-0"
0'-0" 8'-0" 16'-0" 32'-0"

2/16/2023 2:55:16 PM
Autodesk Docs/22036_KC Longbow Mesa 2/22036_KC Longbow Mesa 2.rvt



BUILDING ELEVATION NOTES

- ALL ROOF MOUNTED MECHANICAL EQUIPMENT SHALL BE FULLY SCREENED BY PARAPET WALL TO, OR GREATER THAN, THE HIGHEST POINT ON THE MECHANICAL EQUIPMENT
- SOLID MASONRY WALLS AND GATES EQUAL TO, OR GREATER THAN, THE HIGHEST POINT ON THE MECHANICAL EQUIPMENT SHALL SCREEN ALL GROUND MOUNTED MECHANICAL EQUIPMENT
- SIGNS REQUIRE SEPARATE PERMIT

REFERENCE KEYNOTES

- RUSTED METAL CANOPY
- CONCRETE TILT-UP PANEL JOINTS, TYPICAL AT MAJOR GRIDLINES
- CENTER-GLAZED, SOLAR TINTED INSULATED GLASS IN CLEAR ANODIZED STOREFRONT SYSTEM
- HOLLOW METAL DOOR AND FRAME
- WALL PACK MOUNTED AT 18'-0" ABOVE GRADE
- ROOFTOP MECHANICAL EQUIPMENT BEYOND, FULLY SCREENED BY PARAPET
- DECORATIVE VERTICAL LINEAR WALL SCONCE. MOUNT AT 5'-0"

MATERIAL LEGEND

AL-1	AL-1	AL-1	AL-1
PRODUCT: ALUMINUM STOREFRONT	PRODUCT: ALUMINUM STOREFRONT	PRODUCT: ALUMINUM STOREFRONT	PRODUCT: ALUMINUM STOREFRONT
MANUFACT: ARCADIA	MANUFACT: ARCADIA	MANUFACT: ARCADIA	MANUFACT: ARCADIA
FINISH: ANODIZED ALUMINUM	FINISH: ANODIZED ALUMINUM	FINISH: ANODIZED ALUMINUM	FINISH: ANODIZED ALUMINUM
COLOR: LIGHT BRONZE AB-4	COLOR: LIGHT BRONZE AB-4	COLOR: LIGHT BRONZE AB-4	COLOR: LIGHT BRONZE AB-4
GL01	GL01	GL01	GL01
PRODUCT: STOREFRONT GLAZING	PRODUCT: STOREFRONT GLAZING	PRODUCT: STOREFRONT GLAZING	PRODUCT: STOREFRONT GLAZING
MAN/SERIES: VITRO / SOLARBAN 60	MAN/SERIES: VITRO / SOLARBAN 60	MAN/SERIES: VITRO / SOLARBAN 60	MAN/SERIES: VITRO / SOLARBAN 60
LOCATIONS: ALL EXTERIOR GLAZINGS	LOCATIONS: ALL EXTERIOR GLAZINGS	LOCATIONS: ALL EXTERIOR GLAZINGS	LOCATIONS: ALL EXTERIOR GLAZINGS
COLOR: SOLARGRAY + CLEAR	COLOR: SOLARGRAY + CLEAR	COLOR: SOLARGRAY + CLEAR	COLOR: SOLARGRAY + CLEAR
TILT-1	TILT-1	TILT-1	TILT-1
PRODUCT: PRECAST CONCRETE TILT PANEL	PRODUCT: PRECAST CONCRETE TILT PANEL	PRODUCT: PRECAST CONCRETE TILT PANEL	PRODUCT: PRECAST CONCRETE TILT PANEL
LOCATIONS: GENERAL FIELD COLOR TILT	LOCATIONS: GENERAL FIELD COLOR TILT	LOCATIONS: GENERAL FIELD COLOR TILT	LOCATIONS: GENERAL FIELD COLOR TILT
TEXTURE: SMOOTH, WITH 2" REVEALS	TEXTURE: SMOOTH, WITH 2" REVEALS	TEXTURE: SMOOTH, WITH 2" REVEALS	TEXTURE: SMOOTH, WITH 2" REVEALS
FINISH: PAINT PT-1 (SW 7655 STAMPED CONCRETE - LRV 35)	FINISH: PAINT PT-1 (SW 7655 STAMPED CONCRETE - LRV 35)	FINISH: PAINT PT-1 (SW 7655 STAMPED CONCRETE - LRV 35)	FINISH: PAINT PT-1 (SW 7655 STAMPED CONCRETE - LRV 35)
TILT-2	TILT-2	TILT-2	TILT-2
PRODUCT: PRECAST CONCRETE TILT PANEL	PRODUCT: PRECAST CONCRETE TILT PANEL	PRODUCT: PRECAST CONCRETE TILT PANEL	PRODUCT: PRECAST CONCRETE TILT PANEL
LOCATIONS: PRIMARY ACCENT LOCATIONS	LOCATIONS: PRIMARY ACCENT LOCATIONS	LOCATIONS: PRIMARY ACCENT LOCATIONS	LOCATIONS: PRIMARY ACCENT LOCATIONS
TEXTURE: SMOOTH, WITH 2" REVEALS	TEXTURE: SMOOTH, WITH 2" REVEALS	TEXTURE: SMOOTH, WITH 2" REVEALS	TEXTURE: SMOOTH, WITH 2" REVEALS
FINISH: PAINT PT-2 (SW 7067 CITYSCAPE - LRV 22)	FINISH: PAINT PT-2 (SW 7067 CITYSCAPE - LRV 22)	FINISH: PAINT PT-2 (SW 7067 CITYSCAPE - LRV 22)	FINISH: PAINT PT-2 (SW 7067 CITYSCAPE - LRV 22)
TILT-3	TILT-3	TILT-3	TILT-3
PRODUCT: PRECAST CONCRETE TILT PANEL	PRODUCT: PRECAST CONCRETE TILT PANEL	PRODUCT: PRECAST CONCRETE TILT PANEL	PRODUCT: PRECAST CONCRETE TILT PANEL
LOCATIONS: ENTRY ACCENT LOCATIONS	LOCATIONS: ENTRY ACCENT LOCATIONS	LOCATIONS: ENTRY ACCENT LOCATIONS	LOCATIONS: ENTRY ACCENT LOCATIONS
TEXTURE: SMOOTH, WITH 2" REVEALS	TEXTURE: SMOOTH, WITH 2" REVEALS	TEXTURE: SMOOTH, WITH 2" REVEALS	TEXTURE: SMOOTH, WITH 2" REVEALS
FINISH: PAINT PT-3 (SW 7068 GRIZZLE GRAY - LRV 13)	FINISH: PAINT PT-3 (SW 7068 GRIZZLE GRAY - LRV 13)	FINISH: PAINT PT-3 (SW 7068 GRIZZLE GRAY - LRV 13)	FINISH: PAINT PT-3 (SW 7068 GRIZZLE GRAY - LRV 13)
TILT-4	TILT-4	TILT-4	TILT-4
PRODUCT: PRECAST CONCRETE TILT PANEL	PRODUCT: PRECAST CONCRETE TILT PANEL	PRODUCT: PRECAST CONCRETE TILT PANEL	PRODUCT: PRECAST CONCRETE TILT PANEL
LOCATIONS: PARAPET CAP	LOCATIONS: PARAPET CAP	LOCATIONS: PARAPET CAP	LOCATIONS: PARAPET CAP
TEXTURE: SMOOTH	TEXTURE: SMOOTH	TEXTURE: SMOOTH	TEXTURE: SMOOTH
FINISH: PAINT PT-4 (SW 7674 PEPPERCORN - LRV 10)	FINISH: PAINT PT-4 (SW 7674 PEPPERCORN - LRV 10)	FINISH: PAINT PT-4 (SW 7674 PEPPERCORN - LRV 10)	FINISH: PAINT PT-4 (SW 7674 PEPPERCORN - LRV 10)
TILT-5	TILT-5	TILT-5	TILT-5
PRODUCT: PRECAST CONCRETE TILT PANEL	PRODUCT: PRECAST CONCRETE TILT PANEL	PRODUCT: PRECAST CONCRETE TILT PANEL	PRODUCT: PRECAST CONCRETE TILT PANEL
LOCATIONS: SECONDARY ACCENT LOCATIONS	LOCATIONS: SECONDARY ACCENT LOCATIONS	LOCATIONS: SECONDARY ACCENT LOCATIONS	LOCATIONS: SECONDARY ACCENT LOCATIONS
TEXTURE: WOOD GRAIN FORM LINER	TEXTURE: WOOD GRAIN FORM LINER	TEXTURE: WOOD GRAIN FORM LINER	TEXTURE: WOOD GRAIN FORM LINER
FINISH: PAINT PT-1 (SW 7655 STAMPED CONCRETE - LRV 35)	FINISH: PAINT PT-1 (SW 7655 STAMPED CONCRETE - LRV 35)	FINISH: PAINT PT-1 (SW 7655 STAMPED CONCRETE - LRV 35)	FINISH: PAINT PT-1 (SW 7655 STAMPED CONCRETE - LRV 35)
TILT-6	TILT-6	TILT-6	TILT-6
PRODUCT: PRECAST CONCRETE TILT PANEL	PRODUCT: PRECAST CONCRETE TILT PANEL	PRODUCT: PRECAST CONCRETE TILT PANEL	PRODUCT: PRECAST CONCRETE TILT PANEL
LOCATIONS: SECONDARY ACCENT LOCATIONS	LOCATIONS: SECONDARY ACCENT LOCATIONS	LOCATIONS: SECONDARY ACCENT LOCATIONS	LOCATIONS: SECONDARY ACCENT LOCATIONS
TEXTURE: SMOOTH/DENSE HORIZONTAL REVEAL	TEXTURE: SMOOTH/DENSE HORIZONTAL REVEAL	TEXTURE: SMOOTH/DENSE HORIZONTAL REVEAL	TEXTURE: SMOOTH/DENSE HORIZONTAL REVEAL
FINISH: PAINT PT-5 (SW 9100 UMBER RUST - LRV 10)	FINISH: PAINT PT-5 (SW 9100 UMBER RUST - LRV 10)	FINISH: PAINT PT-5 (SW 9100 UMBER RUST - LRV 10)	FINISH: PAINT PT-5 (SW 9100 UMBER RUST - LRV 10)
PT-1	PT-1	PT-1	PT-1
PRODUCT: EXTERIOR GRADE PAINT	PRODUCT: EXTERIOR GRADE PAINT	PRODUCT: EXTERIOR GRADE PAINT	PRODUCT: EXTERIOR GRADE PAINT
LOCATIONS: EXT. HM DOORS, TYP.	LOCATIONS: EXT. HM DOORS, TYP.	LOCATIONS: EXT. HM DOORS, TYP.	LOCATIONS: EXT. HM DOORS, TYP.
MFG: SHERWIN WILLIAMS	MFG: SHERWIN WILLIAMS	MFG: SHERWIN WILLIAMS	MFG: SHERWIN WILLIAMS
COLOR: SW 7655 STAMPED CONCRETE (LRV 35)	COLOR: SW 7655 STAMPED CONCRETE (LRV 35)	COLOR: SW 7655 STAMPED CONCRETE (LRV 35)	COLOR: SW 7655 STAMPED CONCRETE (LRV 35)
PT-2	PT-2	PT-2	PT-2
PRODUCT: EXTERIOR GRADE PAINT	PRODUCT: EXTERIOR GRADE PAINT	PRODUCT: EXTERIOR GRADE PAINT	PRODUCT: EXTERIOR GRADE PAINT
LOCATIONS: CONCRETE TILT-UP PANELS	LOCATIONS: CONCRETE TILT-UP PANELS	LOCATIONS: CONCRETE TILT-UP PANELS	LOCATIONS: CONCRETE TILT-UP PANELS
MFG: SHERWIN WILLIAMS	MFG: SHERWIN WILLIAMS	MFG: SHERWIN WILLIAMS	MFG: SHERWIN WILLIAMS
COLOR: SW 7067 CITYSCAPE - LRV 22	COLOR: SW 7067 CITYSCAPE - LRV 22	COLOR: SW 7067 CITYSCAPE - LRV 22	COLOR: SW 7067 CITYSCAPE - LRV 22
PT-3	PT-3	PT-3	PT-3
PRODUCT: EXTERIOR GRADE PAINT	PRODUCT: EXTERIOR GRADE PAINT	PRODUCT: EXTERIOR GRADE PAINT	PRODUCT: EXTERIOR GRADE PAINT
LOCATIONS: CONCRETE TILT-UP PANELS	LOCATIONS: CONCRETE TILT-UP PANELS	LOCATIONS: CONCRETE TILT-UP PANELS	LOCATIONS: CONCRETE TILT-UP PANELS
MFG: SHERWIN WILLIAMS	MFG: SHERWIN WILLIAMS	MFG: SHERWIN WILLIAMS	MFG: SHERWIN WILLIAMS
COLOR: SW 7068 GRIZZLE GRAY - LRV 13	COLOR: SW 7068 GRIZZLE GRAY - LRV 13	COLOR: SW 7068 GRIZZLE GRAY - LRV 13	COLOR: SW 7068 GRIZZLE GRAY - LRV 13
PT-4	PT-4	PT-4	PT-4
PRODUCT: EXTERIOR GRADE PAINT	PRODUCT: EXTERIOR GRADE PAINT	PRODUCT: EXTERIOR GRADE PAINT	PRODUCT: EXTERIOR GRADE PAINT
LOCATIONS: CONCRETE TILT-UP PANELS	LOCATIONS: CONCRETE TILT-UP PANELS	LOCATIONS: CONCRETE TILT-UP PANELS	LOCATIONS: CONCRETE TILT-UP PANELS
MFG: SHERWIN WILLIAMS	MFG: SHERWIN WILLIAMS	MFG: SHERWIN WILLIAMS	MFG: SHERWIN WILLIAMS
COLOR: SW 6258 TRICORN BLACK - LRV 3	COLOR: SW 6258 TRICORN BLACK - LRV 3	COLOR: SW 6258 TRICORN BLACK - LRV 3	COLOR: SW 6258 TRICORN BLACK - LRV 3
PT-5	PT-5	PT-5	PT-5
PRODUCT: EXTERIOR GRADE PAINT	PRODUCT: EXTERIOR GRADE PAINT	PRODUCT: EXTERIOR GRADE PAINT	PRODUCT: EXTERIOR GRADE PAINT
LOCATIONS: CONCRETE TILT-UP PANELS	LOCATIONS: CONCRETE TILT-UP PANELS	LOCATIONS: CONCRETE TILT-UP PANELS	LOCATIONS: CONCRETE TILT-UP PANELS
MFG: SHERWIN WILLIAMS	MFG: SHERWIN WILLIAMS	MFG: SHERWIN WILLIAMS	MFG: SHERWIN WILLIAMS
COLOR: SW 9100 UMBER RUST - LRV 10	COLOR: SW 9100 UMBER RUST - LRV 10	COLOR: SW 9100 UMBER RUST - LRV 10	COLOR: SW 9100 UMBER RUST - LRV 10
CNPY-1	CNPY-1	CNPY-1	CNPY-1
PRODUCT: EXTERIOR GRADE PAINT	PRODUCT: EXTERIOR GRADE PAINT	PRODUCT: EXTERIOR GRADE PAINT	PRODUCT: EXTERIOR GRADE PAINT
LOCATIONS: CANOPY STEEL	LOCATIONS: CANOPY STEEL	LOCATIONS: CANOPY STEEL	LOCATIONS: CANOPY STEEL
TEXTURE: SMOOTH	TEXTURE: SMOOTH	TEXTURE: SMOOTH	TEXTURE: SMOOTH
FINISH: PAINT PT-5 (SW 9100 UMBER RUST - LRV 10)	FINISH: PAINT PT-5 (SW 9100 UMBER RUST - LRV 10)	FINISH: PAINT PT-5 (SW 9100 UMBER RUST - LRV 10)	FINISH: PAINT PT-5 (SW 9100 UMBER RUST - LRV 10)

CERTIFICATION



DISCLAIMER

THESE PLANS ARE COPYRIGHTED AND ARE SUBJECT TO COPYRIGHT PROTECTION AS AN "ARCHITECTURAL WORK" UNDER SEC. 102 OF THE COPYRIGHT ACT, 17 U.S.C. AS AMENDED DECEMBER 1990 AND KNOWN AS ARCHITECTURAL WORKS COPYRIGHT PROTECTION ACT OF 1990. THE PROTECTION INCLUDES BUT IS NOT LIMITED TO THE OVERALL FORM AS WELL AS THE ARRANGEMENT AND COMPOSITION OF SPACES AND ELEMENTS OF THE DESIGN. UNDER SUCH PROTECTION, UNAUTHORIZED USE OF THESE PLANS CAN LEGALLY RESULT IN THE CESSION OF CONSTRUCTION OR BUILDINGS BEING SEIZED AND/OR MONETARY COMPENSATION TO COTTON ARCHITECTURE + DESIGN LLC.

PROJECT INFORMATION

CTC PROPERTIES LLC

LONGBOW BUSINESS PARK LOT 7

5400 E MCDOWELL RD
MESA, AZ 85215

PROJECT #: 22036

ISSUE
DRB / P&Z SUBMISSION

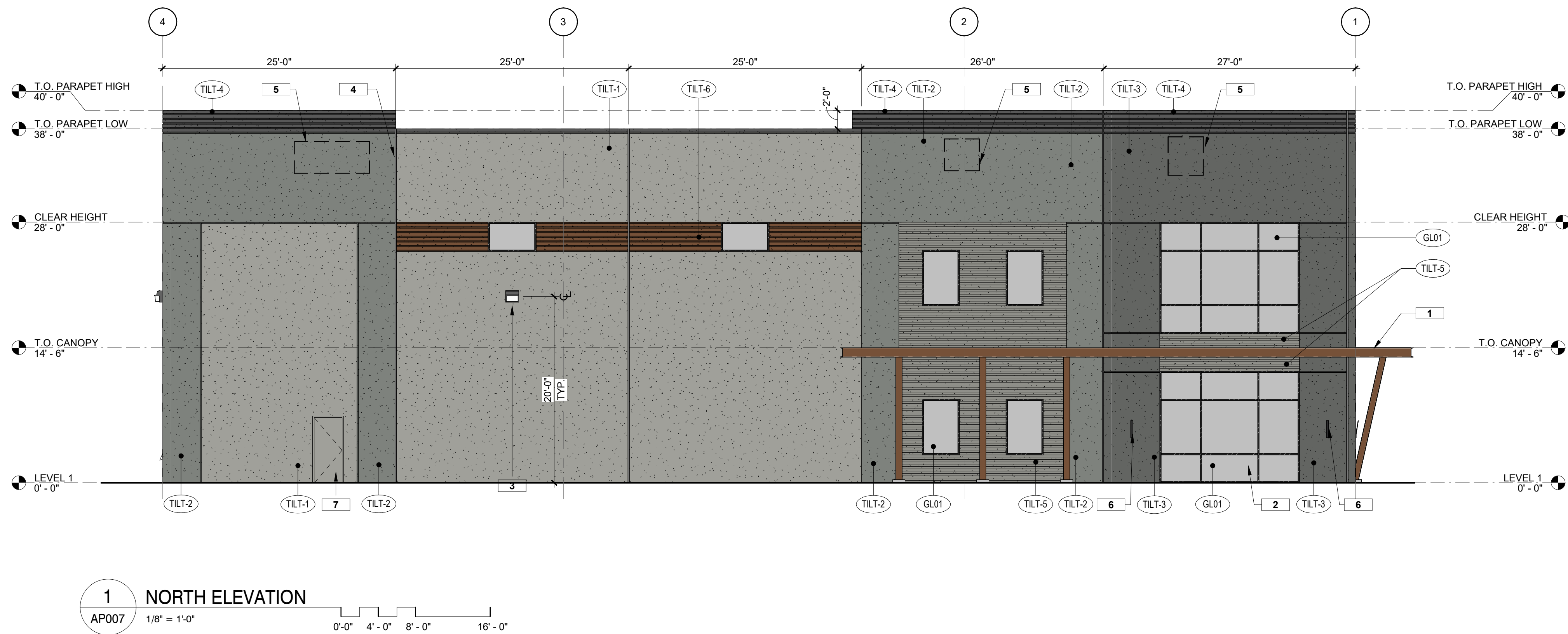
ISSUE DATE
11/10/2022

ISSUE REVISIONS

#	Date	Description
		Updated 2/16/23

SHEET NAME
PRELIMINARY EXTERIOR ELEVATIONS

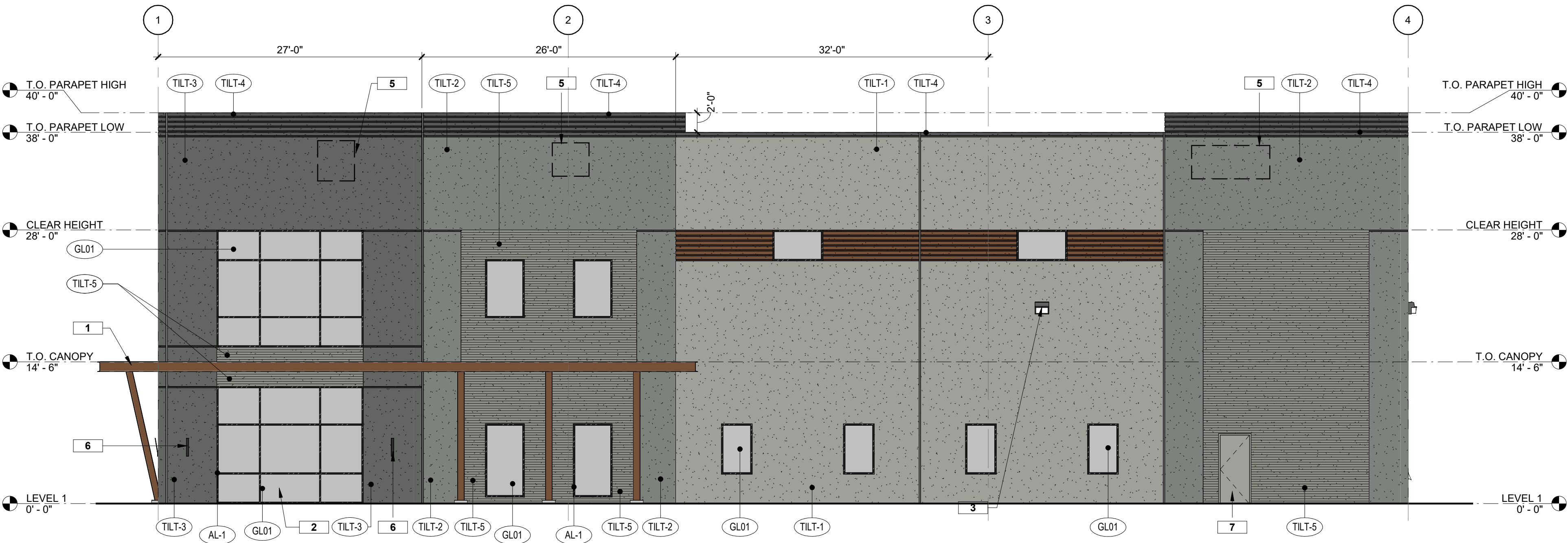
AP006



1 NORTH ELEVATION
AP007
1/8" = 1'-0"

MATERIAL QUANTITIES		
MATERIAL	MATERIAL AREA	% OF EACH FACADE
EAST ELEVATION		
DENSE REVEAL PATTERN	1,002.9	6.7%
STOREFRONT	245.4	1.6%
TILT-UP CONCRETE	13,826.2	91.7%
	15,074.5	100.0%
NORTH ELEVATION		
DENSE REVEAL PATTERN	310	6.2%
STOREFRONT	488.8	9.8%
TILT-UP CONCRETE	3,731.3	74.7%
WOOD GRAIN FORM LINER	468	9.4%
	4,998.1	100.0%

MATERIAL QUANTITIES		
MATERIAL	MATERIAL AREA	% OF EACH FACADE
SOUTH ELEVATION		
DENSE REVEAL PATTERN	310.2	6.2%
STOREFRONT	566.2	11.3%
TILT-UP CONCRETE	3,213.5	64.3%
WOOD GRAIN FORM LINER	908.1	18.2%
	4,997.9	100.0%
WEST ELEVATION		
DENSE REVEAL PATTERN	1,206.7	7.1%
STOREFRONT	2,132.6	12.5%
TILT-UP CONCRETE	10,620.4	62.2%
WOOD GRAIN FORM LINER	3,120.2	18.3%
	17,079.8	100.0%



2 SOUTH ELEVATION
AP007
1/8" = 1'-0"

BUILDING ELEVATION NOTES

- ALL ROOF MOUNTED MECHANICAL EQUIPMENT SHALL BE FULLY SCREENED BY PARAPET WALL TO, OR GREATER THAN, THE HIGHEST POINT ON THE MECHANICAL EQUIPMENT
- SOLID MASONRY WALLS AND GATES EQUAL TO, OR GREATER THAN, THE HIGHEST POINT ON THE MECHANICAL EQUIPMENT SHALL SCREEN ALL GROUND MOUNTED MECHANICAL EQUIPMENT
- SIGNS REQUIRE SEPARATE PERMIT

REFERENCE KEYNOTES

- RUSTED METAL CANOPY
- CENTER-GLAZED, SOLAR TINTED INSULATED GLASS IN CLEAR ANODIZED STOREFRONT SYSTEM
- WALL PACK MOUNTED AT 18'-0" ABOVE GRADE
- CONCRETE TILT-UP PANEL JOINTS, TYPICAL AT MAJOR GRIDLINES
- ROOFTOP MECHANICAL EQUIPMENT BEYOND, FULLY SCREENED BY PARAPET
- DECORATIVE VERTICAL LINEAR WALL SCONCE, MOUNT AT 5'-0"
- HOLLOW METAL DOOR AND FRAME

MATERIAL LEGEND

AL-1	AL-1 PRODUCT: ALUMINUM STOREFRONT MANUFACT: ARCADIA FINISH: ANNOZIZED ALUMINUM COLOR: LIGHT BRONZE AB-4
GL01	GL01 PRODUCT: STOREFRONT GLAZING MAN/SERIES: VITRO / SOLARBAN 60 LOCATIONS: ALL EXTERIOR GLAZING COLOR: SOLARGRAY + CLEAR
TILT-1	TILT-1 PRODUCT: PRECAST CONCRETE TILT PANEL LOCATIONS: GENERAL FIELD COLOR TILT TEXTURE: SMOOTH, WITH 2" REVEALS FINISH: PAINT PT-1 (SW 7655 STAMPED CONCRETE - LRV 35)
TILT-2	TILT-2 PRODUCT: PRECAST CONCRETE TILT PANEL LOCATIONS: PRIMARY ACCENT LOCATIONS TEXTURE: SMOOTH, WITH 2" REVEALS FINISH: PAINT PT-2 (SW 7067 CITYSCAPE - LRV 22)
TILT-3	TILT-3 PRODUCT: PRECAST CONCRETE TILT PANEL LOCATIONS: ENTRY ACCENT LOCATIONS TEXTURE: SMOOTH, WITH 2" REVEALS FINISH: PAINT PT-3 (SW 7068 GRIZZLE GRAY - LRV 13)
TILT-4	TILT-4 PRODUCT: PRECAST CONCRETE TILT PANEL LOCATIONS: PARAPET CAP TEXTURE: SMOOTH FINISH: PAINT PT-4 (SW 7674 PEPPERCORN - LRV 10)
TILT-5	TILT-5 PRODUCT: PRECAST CONCRETE TILT PANEL LOCATIONS: SECONDARY ACCENT LOCATIONS TEXTURE: WOOD GRAIN FORM LINER FINISH: PAINT PT-1 (SW 7655 STAMPED CONCRETE - LRV 35)
TILT-6	TILT-6 PRODUCT: PRECAST CONCRETE TILT PANEL LOCATIONS: SECONDARY ACCENT LOCATIONS TEXTURE: SMOOTH/DENSE HORIZONTAL REVEAL FINISH: PAINT PT-5 (SW 9100 UMBER RUST - LRV 10)
PT-1	PT-1 PRODUCT: EXTERIOR GRADE PAINT LOCATIONS: EXT. HM DOORS, TYP. MFG: SHERWIN WILLIAMS COLOR: SW 7655 STAMPED CONCRETE (LRV 35)
PT-2	PT-2 PRODUCT: EXTERIOR GRADE PAINT LOCATIONS: CONCRETE TILT-UP PANELS MFG: SHERWIN WILLIAMS COLOR: SW 7067 CITYSCAPE - LRV 22
PT-3	PT-3 PRODUCT: EXTERIOR GRADE PAINT LOCATIONS: CONCRETE TILT-UP PANELS MFG: SHERWIN WILLIAMS COLOR: SW 7068 GRIZZLE GRAY - LRV 13
PT-4	PT-4 PRODUCT: EXTERIOR GRADE PAINT LOCATIONS: CONCRETE TILT-UP PANELS MFG: SHERWIN WILLIAMS COLOR: SW 6258 TRICORN BLACK - LRV 3
PT-5	PT-5 PRODUCT: EXTERIOR GRADE PAINT LOCATIONS: CONCRETE TILT-UP PANELS MFG: SHERWIN WILLIAMS COLOR: SW 9100 UMBER RUST - LRV 10
CNPY-1	CNPY-1 PRODUCT: EXTERIOR GRADE PAINT LOCATIONS: CANOPY STEEL TEXTURE: SMOOTH FINISH: PAINT PT-5 (SW 9100 UMBER RUST - LRV 10)

CERTIFICATION



DISCLAIMER

THESE PLANS ARE COPYRIGHTED AND ARE SUBJECT TO COPYRIGHT PROTECTION AS AN "ARCHITECTURAL WORK" UNDER SEC. 102 OF THE COPYRIGHT ACT, 17 U.S.C. AS AMENDED DECEMBER 1990 AND KNOWN AS ARCHITECTURAL WORKS COPYRIGHT PROTECTION ACT OF 1990. THE PROTECTION INCLUDES BUT IS NOT LIMITED TO THE OVERALL FORM AS WELL AS THE ARRANGEMENT AND COMPOSITION OF SPACES AND ELEMENTS OF THE DESIGN. UNDER SUCH PROTECTION, UNAUTHORIZED USE OF THESE PLANS CAN LEGALLY RESULT IN THE CESSATION OF CONSTRUCTION OR BUILDINGS BEING SEIZED AND/OR MONETARY COMPENSATION TO COTTON ARCHITECTURE + DESIGN LLC.

PROJECT INFORMATION

CTC PROPERTIES LLC
5400 E MCDOWELL RD
MESA, AZ 85215
LONGBOW BUSINESS PARK LOT 7

PROJECT #: 22036

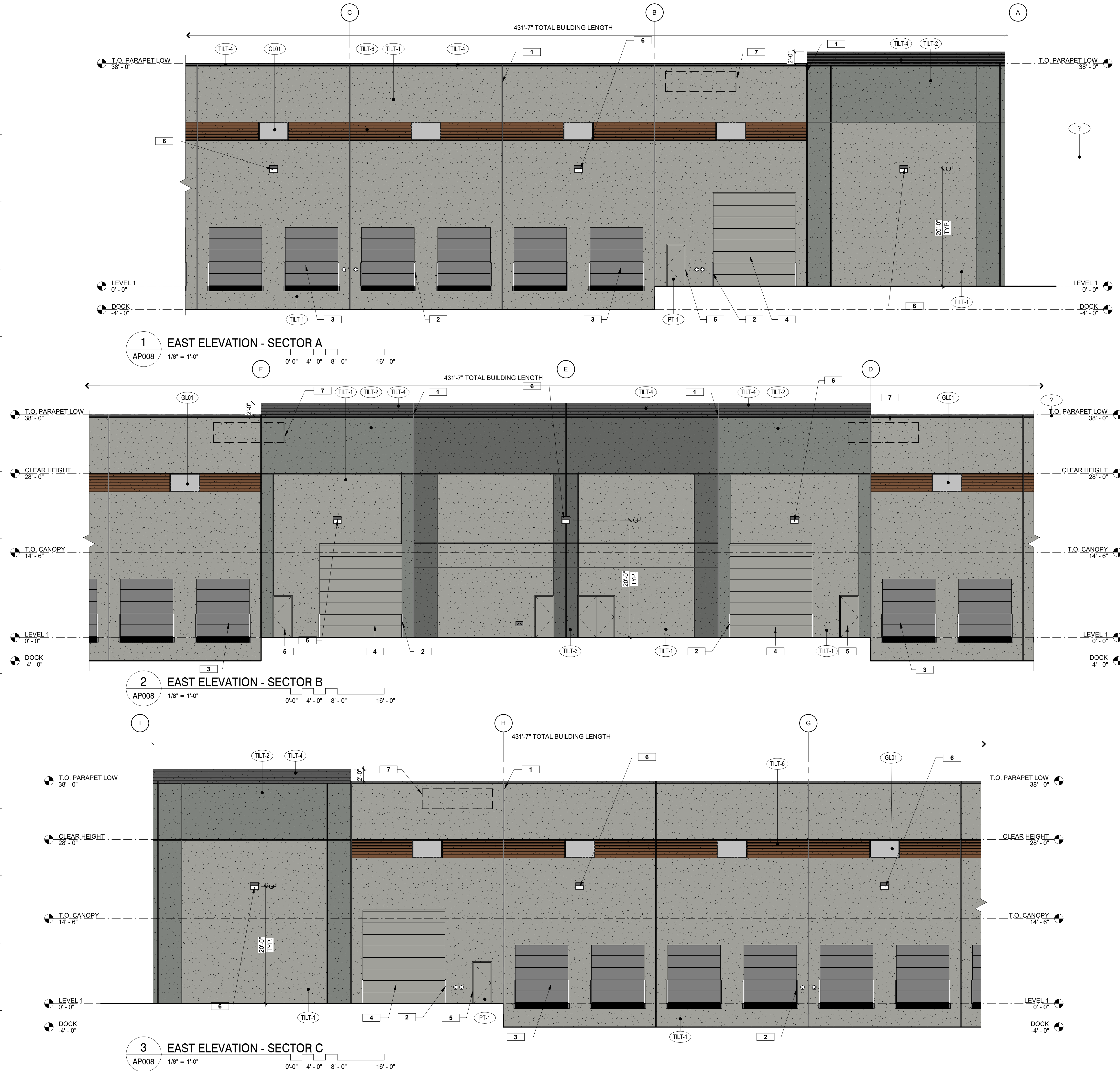
ISSUE
DRB / P&Z SUBMISSION

ISSUE DATE
11/10/2022

ISSUE REVISIONS
Date Description
Updated 2/16/23

SHEET NAME
PRELIMINARY EXTERIOR ELEVATIONS

AP007



BUILDING ELEVATION NOTES

- ALL ROOF MOUNTED MECHANICAL EQUIPMENT SHALL BE FULLY SCREENED BY PARAPET WALL TO, OR GREATER THAN, THE HIGHEST POINT ON THE MECHANICAL EQUIPMENT
- SOLID MASONRY WALLS AND GATES EQUAL TO, OR GREATER THAN, THE HIGHEST POINT ON THE MECHANICAL EQUIPMENT SHALL SCREEN ALL GROUND MOUNTED MECHANICAL EQUIPMENT
- SIGNS REQUIRE SEPARATE PERMIT

REFERENCE KEYNOTES

- CONCRETE TILT-UP PANEL JOINTS, TYPICAL AT MAJOR GRIDLINES
- METAL CORNER GUARDS, L-SHAPED
- 9' X 10' MANUALLY OPERATED INSULATED OVERHEAD DOOR
- 14' X 16' MOTOR OPERATED INSULATED OVERHEAD DOOR
- HOLLOW METAL DOOR AND FRAME
- WALL PACK MOUNTED AT 18'-0" ABOVE GRADE
- ROOFTOP MECHANICAL EQUIPMENT BEYOND, FULLY SCREENED BY PARAPET

MATERIAL LEGEND

AL-1	AL-1 PRODUCT: ALUMINUM STOREFRONT MANUFACT: ARCADIA FINISH: ANODIZED ALUMINUM COLOR: LIGHT BRONZE AB-4
GL01	GL01 PRODUCT: STOREFRONT GLAZING MAN/SERIES: VITRO / SOLARBAN 60 LOCATIONS: ALL EXTERIOR GLAZING COLOR: SOLARGRAY + CLEAR
TILT-1	TILT-1 PRODUCT: PRECAST CONCRETE TILT PANEL LOCATIONS: GENERAL FIELD COLOR TILT TEXTURE: SMOOTH, WITH 2" REVEALS FINISH: PAINT PT-1 (SW 7655 STAMPED CONCRETE - LRV 35)
TILT-2	TILT-2 PRODUCT: PRECAST CONCRETE TILT PANEL LOCATIONS: PRIMARY ACCENT LOCATIONS TEXTURE: SMOOTH, WITH 2" REVEALS FINISH: PAINT PT-2 (SW 7067 CITYSCAPE - LRV 22)
TILT-3	TILT-3 PRODUCT: PRECAST CONCRETE TILT PANEL LOCATIONS: ENTRY ACCENT LOCATIONS TEXTURE: SMOOTH, WITH 2" REVEALS FINISH: PAINT PT-3 (SW 7068 GRIZZLE GRAY - LRV 13)
TILT-4	TILT-4 PRODUCT: PRECAST CONCRETE TILT PANEL LOCATIONS: PARAPET CAP TEXTURE: SMOOTH FINISH: PAINT PT-4 (SW 7674 PEPPERCORN - LRV 10)
TILT-5	TILT-5 PRODUCT: PRECAST CONCRETE TILT PANEL LOCATIONS: SECONDARY ACCENT LOCATIONS TEXTURE: WOOD GRAIN FORM LINER FINISH: PAINT PT-1 (SW 7655 STAMPED CONCRETE - LRV 35)
TILT-6	TILT-6 PRODUCT: PRECAST CONCRETE TILT PANEL LOCATIONS: SECONDARY ACCENT LOCATIONS TEXTURE: SMOOTH/DENSE HORIZONTAL REVEAL FINISH: PAINT PT-5 (SW 9100 UMBER RUST - LRV 10)
PT-1	PT-1 PRODUCT: EXTERIOR GRADE PAINT LOCATIONS: EXT. HM DOORS, TYP. MFG: SHERWIN WILLIAMS COLOR: SW 7655 STAMPED CONCRETE (LRV 35)
PT-2	PT-2 PRODUCT: EXTERIOR GRADE PAINT LOCATIONS: CONCRETE TILT-UP PANELS MFG: SHERWIN WILLIAMS COLOR: SW 7067 CITYSCAPE - LRV 22
PT-3	PT-3 PRODUCT: EXTERIOR GRADE PAINT LOCATIONS: CONCRETE TILT-UP PANELS MFG: SHERWIN WILLIAMS COLOR: SW 7068 GRIZZLE GRAY - LRV 13
PT-4	PT-4 PRODUCT: EXTERIOR GRADE PAINT LOCATIONS: CONCRETE TILT-UP PANELS MFG: SHERWIN WILLIAMS COLOR: SW 6258 TRICORN BLACK - LRV 3
PT-5	PT-5 PRODUCT: EXTERIOR GRADE PAINT LOCATIONS: CONCRETE TILT-UP PANELS MFG: SHERWIN WILLIAMS COLOR: SW 9100 UMBER RUST - LRV 10
CNPY-1	CNPY-1 PRODUCT: EXTERIOR GRADE PAINT LOCATIONS: CANOPY STEEL TEXTURE: SMOOTH FINISH: PAINT PT-5 (SW 9100 UMBER RUST - LRV 10)

CERTIFICATION



DISCLAIMER

THESE PLANS ARE COPYRIGHTED AND ARE SUBJECT TO COPYRIGHT PROTECTION AS AN "ARCHITECTURAL WORK" UNDER SEC. 102 OF THE COPYRIGHT ACT, 17 U.S.C. AS AMENDED DECEMBER 1990 AND KNOWN AS "ARCHITECTURAL WORKS COPYRIGHT PROTECTION ACT OF 1990." THE PROTECTION INCLUDES BUT IS NOT LIMITED TO THE OVERALL FORM AS WELL AS THE ARRANGEMENT AND COMPOSITION OF SPACES AND ELEMENTS OF THE DESIGN. UNDER SUCH PROTECTION, UNAUTHORIZED USE OF THESE PLANS CAN LEGALLY RESULT IN THE CESSION OF CONSTRUCTION OR BUILDINGS BEING SEIZED AND/OR MONETARY COMPENSATION TO COTTON ARCHITECTURE + DESIGN LLC.

PROJECT INFORMATION

CTC PROPERTIES LLC

Longbow Business Park Lot 7

5400 E McDOWELL RD
MESA, AZ 85215

PROJECT #: 22036

ISSUE
DRB / P&Z SUBMISSION

ISSUE DATE
11/10/2022

ISSUE REVISIONS

#	Date	Description
---	------	-------------

Updated 2/16/23

SHEET NAME
PRELIMINARY EXTERIOR ELEVATIONS

AP008



cotton
architecture + design

502 S 2ND STREET, SUITE 3 | PHOENIX, AZ 85004
WWW.COTTONARCHITECTURE.COM
(602) 529-1386

AP000 | RENDERING

Longbow Business Park Lot 7

CTC PROPERTIES LLC
5400 E MCDOWELL RD
MESA, AZ 85215

PROJECT # | 22036 DATE | 09/19/2022

Updated 2/16/23



cotton
architecture + design

502 S 2ND STREET, SUITE 3 | PHOENIX, AZ 85004
WWW.COTTONARCHITECTURE.COM
(602) 529-1386

AP000A | RENDERING

Longbow Business Park Lot 7

CTC PROPERTIES LLC
5400 E MCDOWELL RD
MESA, AZ 85215

PROJECT # | 22036 DATE | 01/30/2023

Updated 2/16/23



cotton
architecture + design

502 S 2ND STREET, SUITE 3 | PHOENIX, AZ 85004
WWW.COTTONARCHITECTURE.COM
(602) 529-1386

AP000B | RENDERING

Longbow Business Park Lot 7

CTC PROPERTIES LLC
5400 E MCDOWELL RD
MESA, AZ 85215

PROJECT # | 22036 DATE | 02/16/2023

Updated 2/16/23