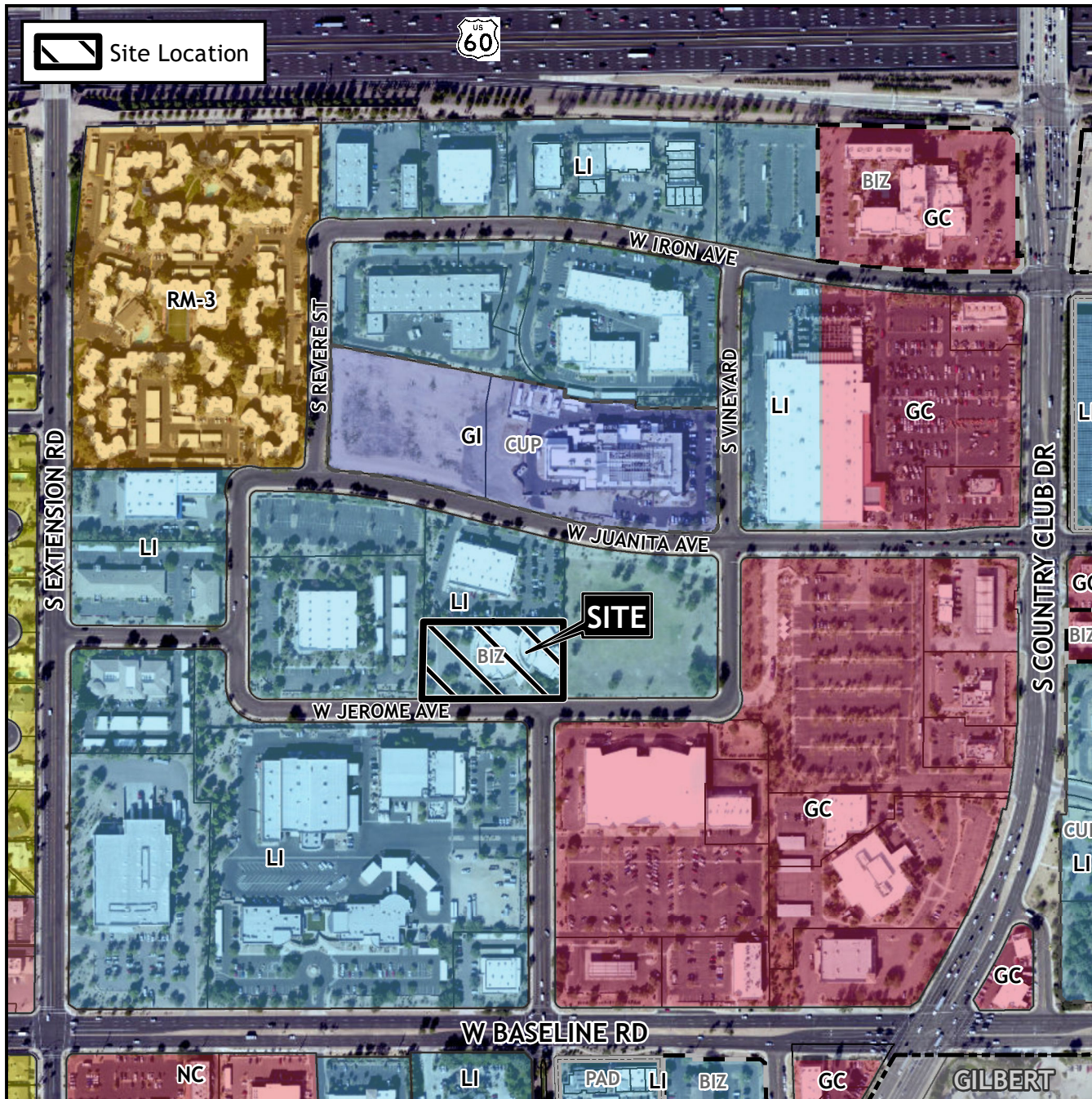


Planning and Zoning Vicinity Map: ZON22-01270



Case Details

CASE:

ZON22-01270

PRE-PLAT : ☐

SITE / ADDRESS:

(District 4) Within the 600 block of West Jerome Avenue (north side). Located west of Country Club Road and north of Baseline Road. (2± acres).

REQUEST:

Rezone from Light Industrial with a Bonus Intensity Zone overlay (LI-BIZ) to General Commercial with a Bonus Intensity Zone overlay and Council Use Permit (GC-BIZ-CUP) and Site Plan Review. This request will allow for a social service facility

