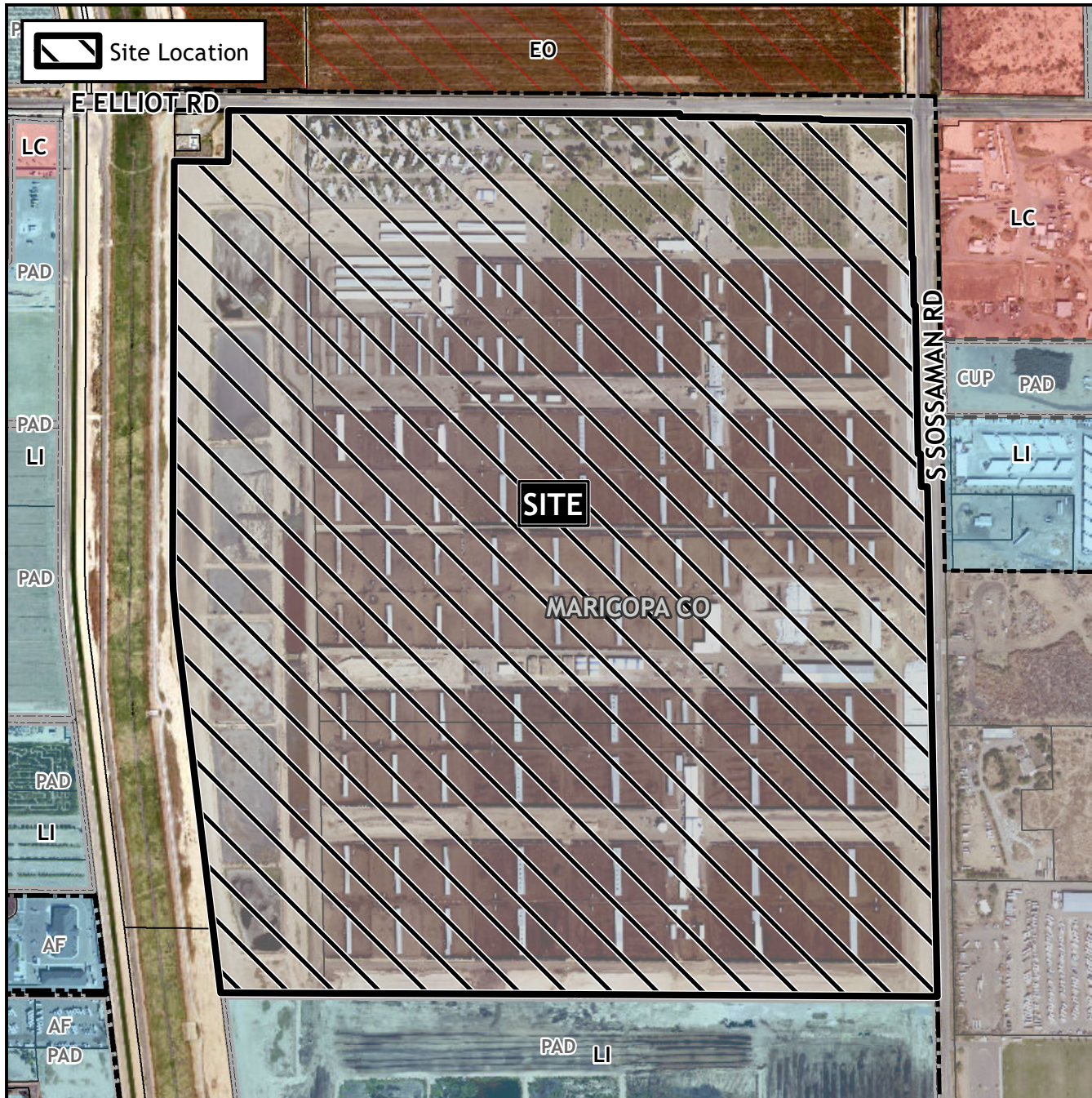


# Planning and Zoning Vicinity Map: ZON22-00921



## Case Details

**CASE:**

ZON22-00921

**PRE-PLAT:** ☒

### SITE / ADDRESS:

District 6. Within the 7100 to 7600 blocks of East Elliot Road (south side) and within the 3600 to 4200 blocks of South Sossaman Road (west side). Located west of Sossaman Road on the south side of Elliot Road. (273± acres).

### REQUEST:

Rezone from Agriculture (AG) to Light Industrial with a Planned Area Development Overlay (LI-PAD) and Site Plan Review. This request will allow for the development of an industrial business park.



0 500 1,000  
Feet

