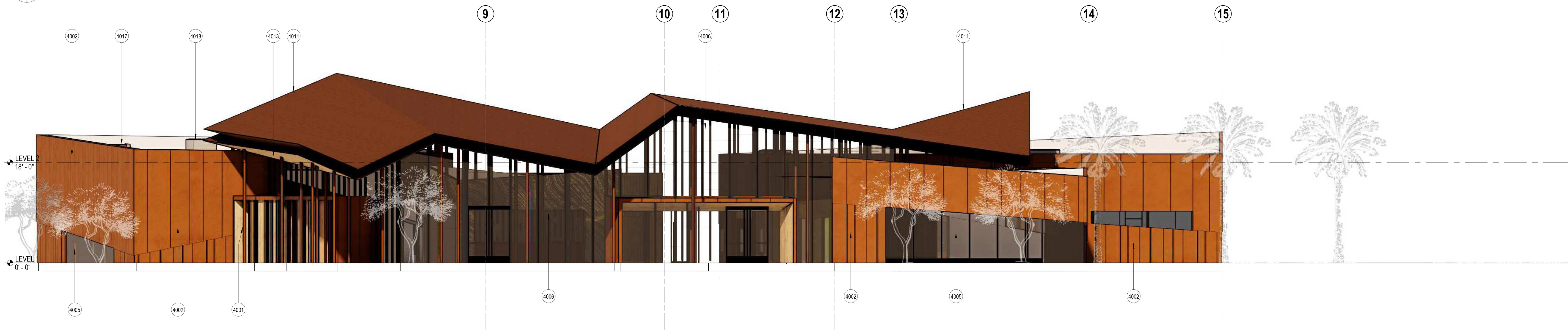
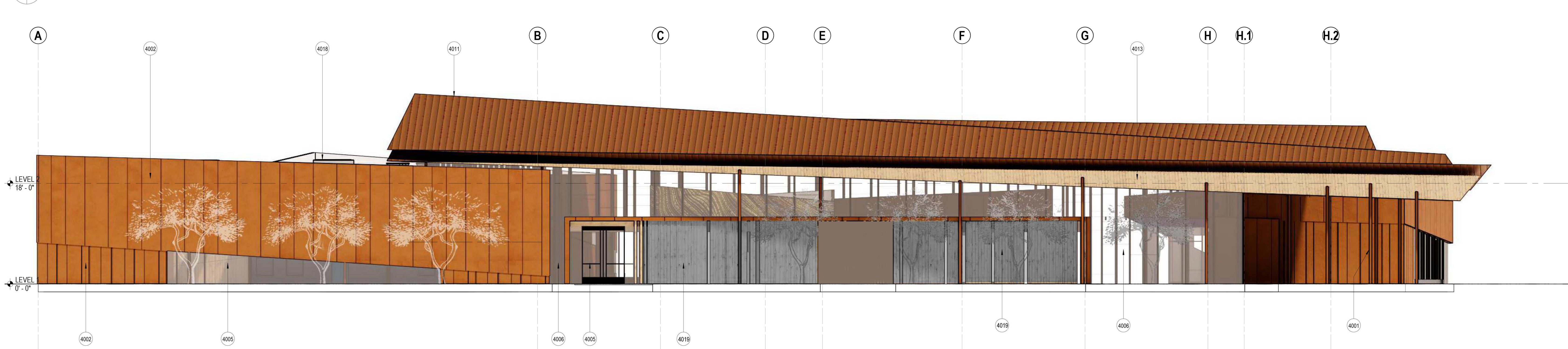




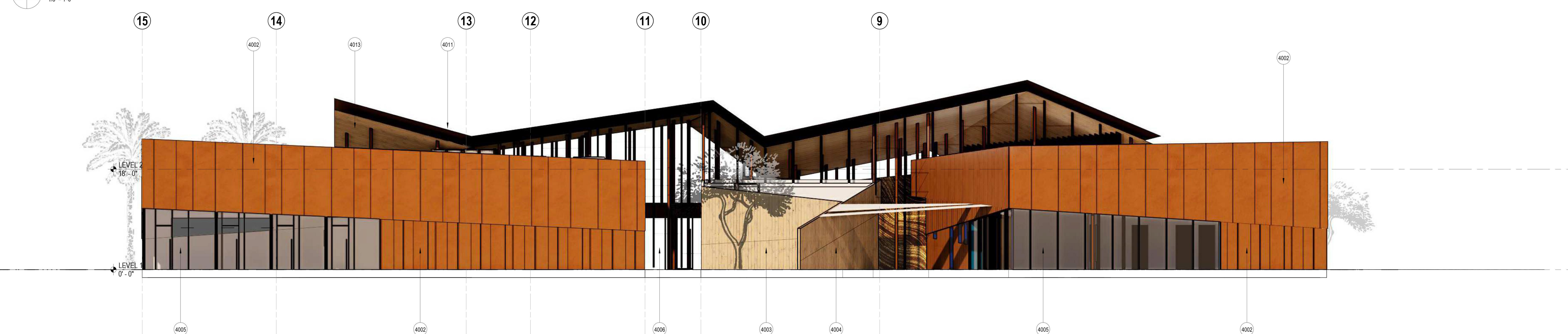
2 EAST - OVERALL
A-131 A-221
1/8" = 1'-0"



1 SOUTH - OVERALL
A-111 A-221
1/8" = 1'-0"



4 WEST - OVERALL
A-111 A-221
1/8" = 1'-0"



3 NORTH - OVERALL
A-111 A-221
1/8" = 1'-0"

general notes

1. REFER TO GENERAL INFORMATION SHEET G001 FOR MATERIAL DESIGNATIONS

descriptive notes

- 4001 STRUCTURAL COLUMN SUPPORTING HIGH ROOF ABOVE - TYP
- 4002 EXTERIOR FORMED METAL WALL - 16 GA MILL FINISH STEEL PANELS
- 4003 VERTICAL WOOD PLANK SIDING WALL - ACETYLATED PINE WOOD IN WITH NATURALLY WEATHERED TEXTURE
- 4004 EXTERIOR VERTICAL WOOD PLANK SIDING WALL (DOUBLE SIDED) - ACETYLATED PINE WOOD IN WITH NATURALLY WEATHERED TEXTURE
- 4005 WINDOW WALL (BASIS OF DESIGN ARCADIA OPG-6000) - SILICONE SEALANT GLAZED VERTICAL MILLIONS AND SILICONE SEALANT GLAZED INCLUDING HEAD AND SILL - 1" INSULATED GLAZING UNITS (SOLARBAN 60) AND DARK BRONZE ANODIZED (#7) METAL FINISH
- 4006 CURTAIN WALL (BASIS OF DESIGN ARCADIA OPG-3000) - CAPTURED VERTICAL MILLIONS AND SILICONE SEALANT GLAZED HORIZONTAL MILLIONS (INCLUDING HEAD AND SILL) - HEAD EXTENDS ABOVE SUSPENDED WOOD PANEL SOFFIT TO UNDERSIDE OF STRUCTURE ABOVE - 1" INSULATED GLAZING UNITS (SOLARBAN 60) AND DARK BRONZE ANODIZED (#7) METAL FINISH
- 4011 CORTEN STANDING SEAM ROOF - SLOPE VARIES (SEE ROOF PLAN FOR ROOF HEIGHTS)
- 4013 WOOD PLANK SOFFIT (WPS-X)
- 4017 ROOF ACCESS HATCH AND GUARDRAIL BEYOND SHOWN IN OPEN POSITION
- 4018 MECHANICAL UNIT BEYOND - SEE MECHANICAL DWGS
- 4019 CORRUGATED FIBER CEMENT

revisions schedule

rev #	description	date

4450 NORTH 12TH STREET
SUITE TWO HUNDRED
PHOENIX AZ 85014 USA
602.264.1955 RKARCH.COM

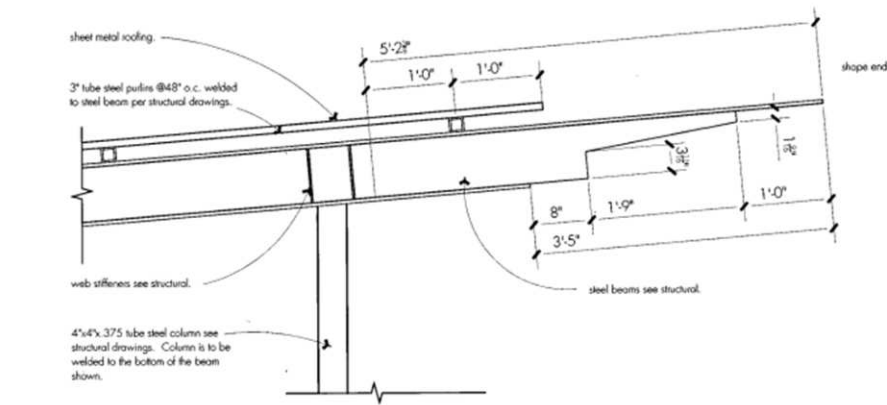
RICHÄRD KENNEDY
ARCHITECTS

SOUTHEAST MESA LIBRARY
MESA PUBLIC LIBRARY
DESIGN DEVELOPMENT | 11/04/2022
CP0428

A-221 EXTERIOR BUILDING ELEVATIONS

scale: 1/8" = 1'-0"
0 2' 4' 8' 16' 32'

- beam details match existing "Great Park" structures to integrate the Library to the greater park context.



*Detail by Tate Studio Architects